

171 N. WHITE HORSE PIKE | HAMMONTON, NJ

PROPERTY DESCRIPTION

Location 171 North White Horse Pike
Hammonton, NJ 08037

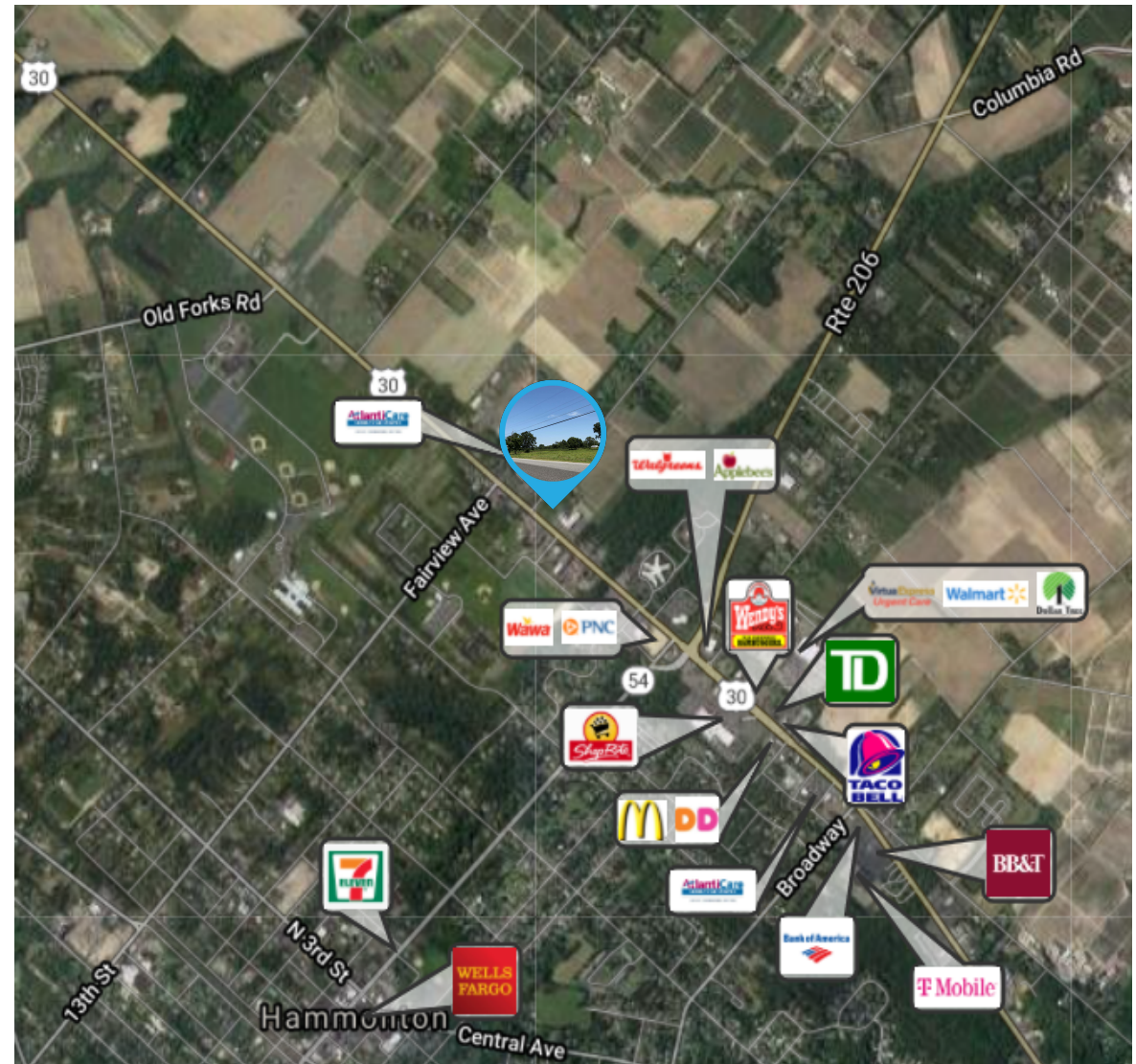
Sale Price \$649,000

Property / Area Description

- 2.3 acres of commercial land
- Zoned B-2 (Highway Commercial)
- Located adjacent to AtlantiCare Hammonton Facility
- Situated directly on highly traveled White Horse Pike
- Approximately 14,000 VPD (Vehicles Per Day)
- Premier location for medical offices, fast food restaurants, professional office, etc.
- Proposed building up to 12,000 SF
- All utilities are available to property line
- Pinelands Certificate of filing in place

Contact Us

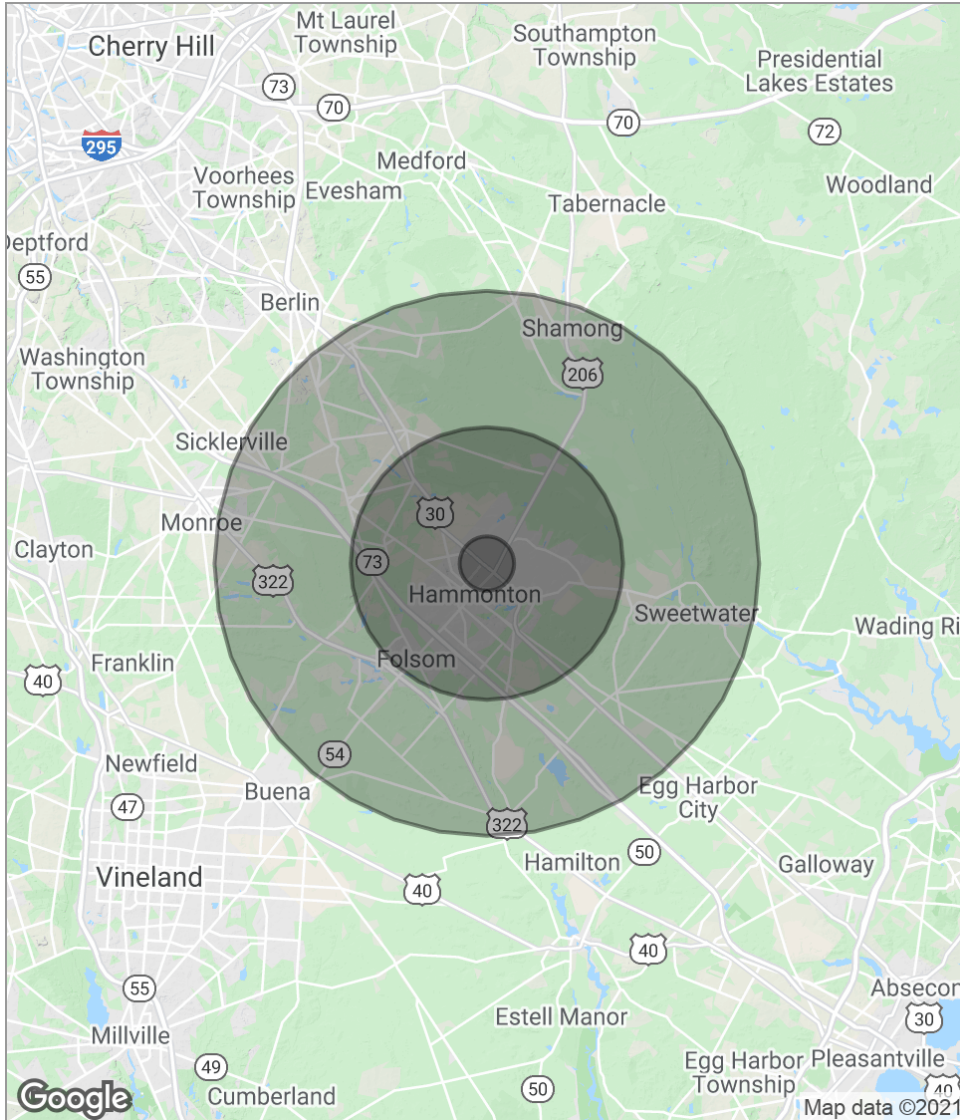
Evan Zweben
Executive Vice President
856.261.5548
evan.zweben@wolfcre.com



follow us:    

The foregoing information was furnished to us by sources which we deem to be reliable, but no warranty or representation is made as to the accuracy thereof. Subject to correction of errors, omissions, change of price, prior sale or withdrawal from market without notice.

DEMOGRAPHICS MAP

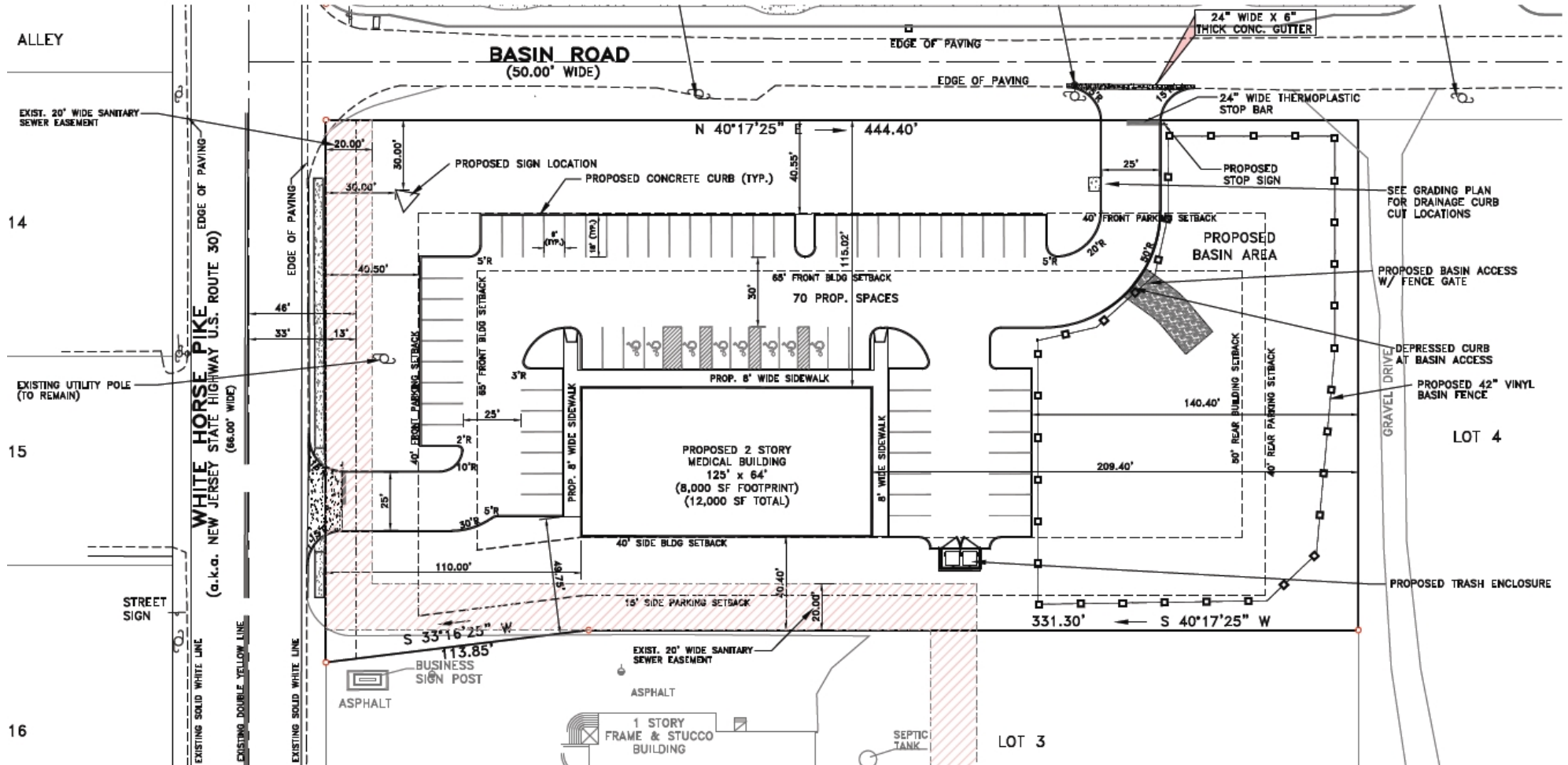


POPULATION	1 MILE	5 MILES	10 MILES
Total population	1,274	22,882	68,188
Median age	43.2	42.2	41.0
Median age (male)	41.1	40.9	39.9
Median age (Female)	47.8	44.2	42.4
HOUSEHOLDS & INCOME	1 MILE	5 MILES	10 MILES
Total households	408	8,105	23,964
# of persons per HH	3.1	2.8	2.8
Average HH income	\$65,989	\$72,476	\$78,918
Average house value	\$264,251	\$276,840	\$265,190

** Demographic data derived from 2010 US Census*

The foregoing information was furnished to us by sources which we deem to be reliable, but no warranty or representation is made as to the accuracy thereof. Subject to correction of errors, omissions, change of price, prior sale or withdrawal from market without notice.

CONCEPTUAL PLANS



The foregoing information was furnished to us by sources which we deem to be reliable, but no warranty or representation is made as to the accuracy thereof. Subject to correction of errors, omissions, change of price, prior sale or withdrawal from market without notice.