



+/- 14,200 SF HIGH QUALITY FLEX SPACE AVAILABLE



553 FOUNDRY ROAD | NORRISTOWN, PA 19403

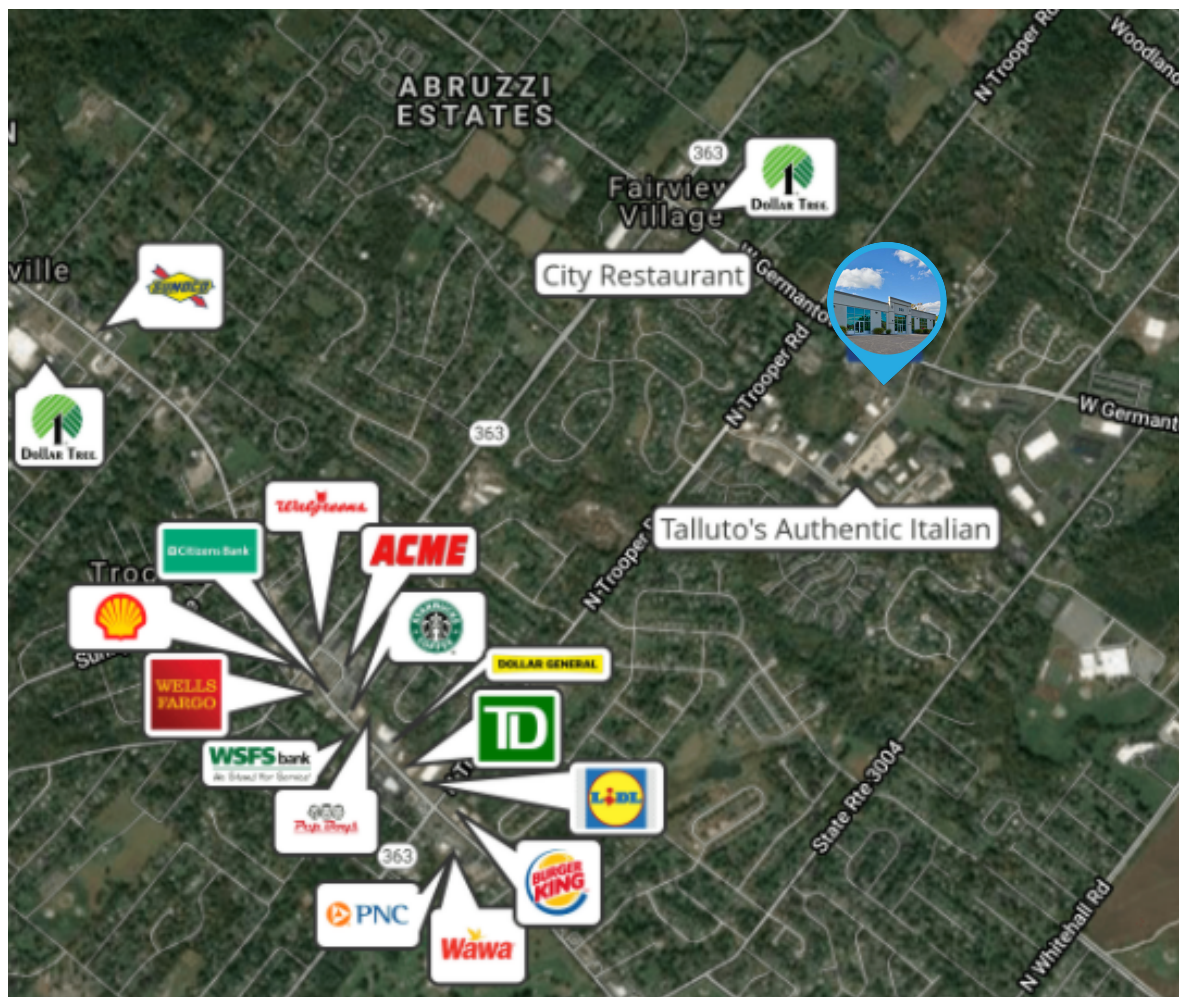


Wolf Commercial Real Estate
www.WolfCRE.com



PROPERTY DESCRIPTION

Location	553 Foundry Road Norristown, PA 19403
Size / SF Available	+/- 14,200 SF
Lease Price	Call for information
Property / Area Description	<ul style="list-style-type: none"> • Situated on +/- 2 acres • Located in a premier West Norriton Industrial Park • 8 Loading Docks • 1 Drive-in • 16' Clear height • Wet sprinkler system • Open floor and ceiling office space • Ample truck and trailer parking • Zoning: Industrial (I) • Located within close proximity of Pennsylvania Turnpike • Within minutes from King of Prussia mall • Located near various national restaurants, banks, gas stations and retailers



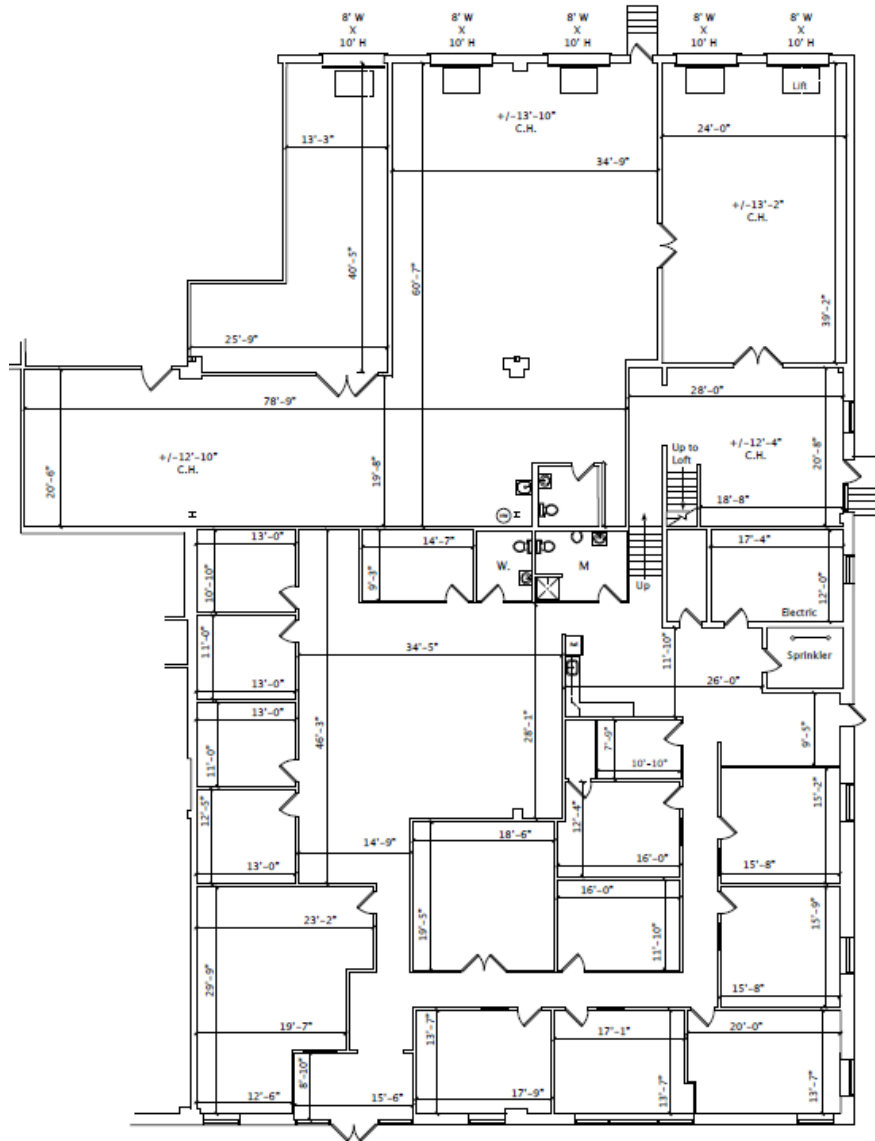
Contact Us

Todd Monahan
Executive VP & Managing Director
610.213.1647
todd.monahan@wolfcre.com

follow us:    

The foregoing information was furnished to us by sources which we deem to be reliable, but no warranty or representation is made as to the accuracy thereof. Subject to correction of errors, omissions, change of price, prior sale or withdrawal from market without notice.

FLOOR PLAN



follow us:    

The foregoing information was furnished to us by sources which we deem to be reliable, but no warranty or representation is made as to the accuracy thereof. Subject to correction of errors, omissions, change of price, prior sale or withdrawal from market without notice.