

+/- 14,200 SF HIGH QUALITY FLEX SPACE AVAILABLE

553 Foundry Road, Norristown, PA



CONTACT US

Todd Monahan

Executive VP & Managing Director
610.213.1647
todd.monahan@wolfcre.com

Jason Wolf

Managing Principal
856.857.6301
jason.wolf@wolfcre.com



The foregoing information was furnished to us by sources which we deem to be reliable, but no warranty or representation is made as to the accuracy thereof.
Subject to correction of errors, omissions, change of price, prior sale or withdrawal from market without notice.



Wolf Commercial Real Estate
www.WolfCRE.com



PROPERTY DESCRIPTION

Location: 553 Foundry Road
Norristown, PA 19403

Size/SF Available: +/- 14,200 SF

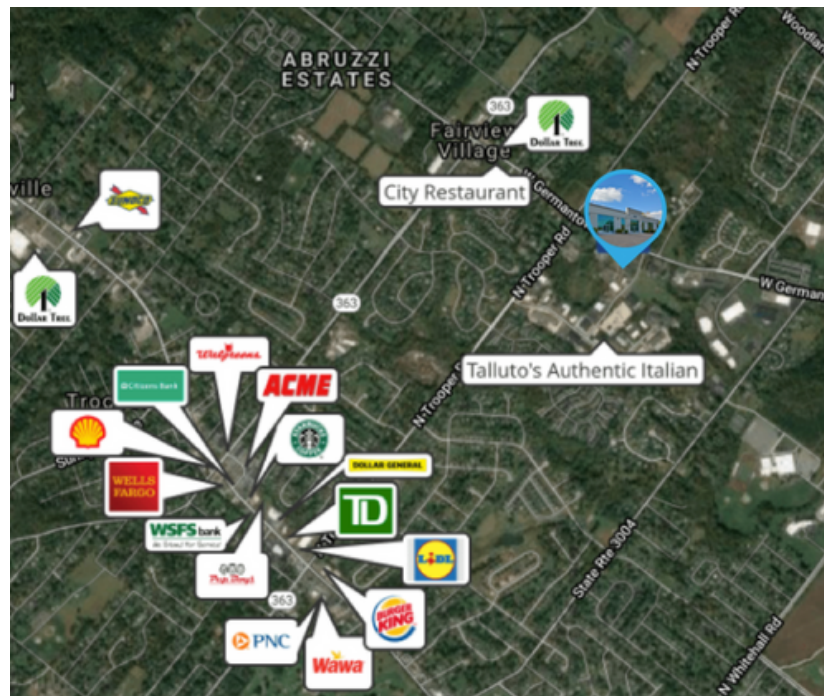
Lease Price: Call for information



PROPERTY AREA/HIGHLIGHTS

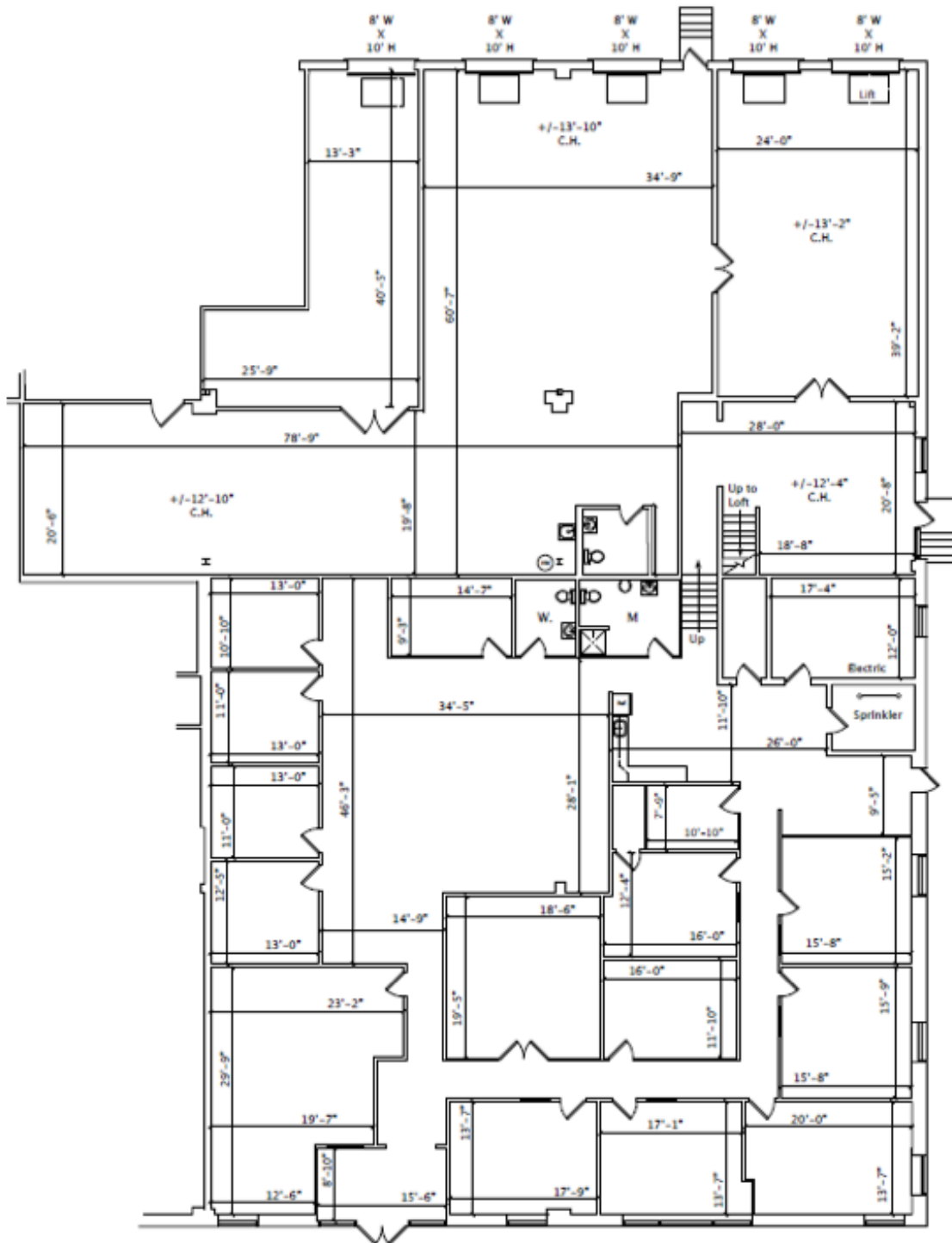
- Situated on +/- 2 acres
- Located in a premier West Norriton Industrial Park
- 8 Loading Docks
- 1 Drive-in
- 16' Clear height
- Wet sprinkler system
- Open floor and ceiling office space
- Ample truck and trailer parking
- Zoning: Industrial (I)
- Located within close proximity of Pennsylvania Turnpike
- Within minutes from King of Prussia mall
- Located near various national restaurants, banks, gas stations and retailers

ARIEL MAP



The foregoing information was furnished to us by sources which we deem to be reliable, but no warranty or representation is made as to the accuracy thereof. Subject to correction of errors, omissions, change of price, prior sale or withdrawal from market without notice.

FLOOR PLAN



The foregoing information was furnished to us by sources which we deem to be reliable, but no warranty or representation is made as to the accuracy thereof. Subject to correction of errors, omissions, change of price, prior sale or withdrawal from market without notice.