

# EVESHAM CORPORATE CENTER



2 Eves Drive, Marlton, NJ

4A Eves Drive, Marlton, NJ



## PREMIER MARLTON OFFICE SPACE AVAILABLE FOR LEASE



4B Eves Drive, Marlton, NJ

5 Eves Drive, Marlton, NJ



**Wolf Commercial Real Estate**

MARLTON • NJ | PHILADELPHIA | KING OF PRUSSIA • PA





## 2 EVES DRIVE AVAILABLE FOR LEASE

- 6,500 SF Available
- \$10.00/SF NNN
- Efficient Layout
- Available for immediate occupancy

## 4A EVES DRIVE AVAILABLE FOR LEASE

- 2,000 - 10,000 SF Available
- \$10.00/SF NNN
- Single story, no loss factor with 24/7 private access to each tenant suite
- Available for immediate occupancy



- Monument tenant directory and suite signage available
- Very efficient layout with open bullpen areas and individual offices
- Immediate access to local amenities, restaurants, retail shopping, hotels, and more
- Conveniently situated just off Route 73, only two miles from the NJ Turnpike, Interstate 295, and Route 70
- Available for immediate occupancy





## 4B EVES DRIVE AVAILABLE FOR LEASE

- 8,000 - 26,000 SF Available
- \$10.00/SF NNN
- 17,000 SF Turn-key fully furnished space
- Available for immediate occupancy

## 5 EVES DRIVE AVAILABLE FOR LEASE

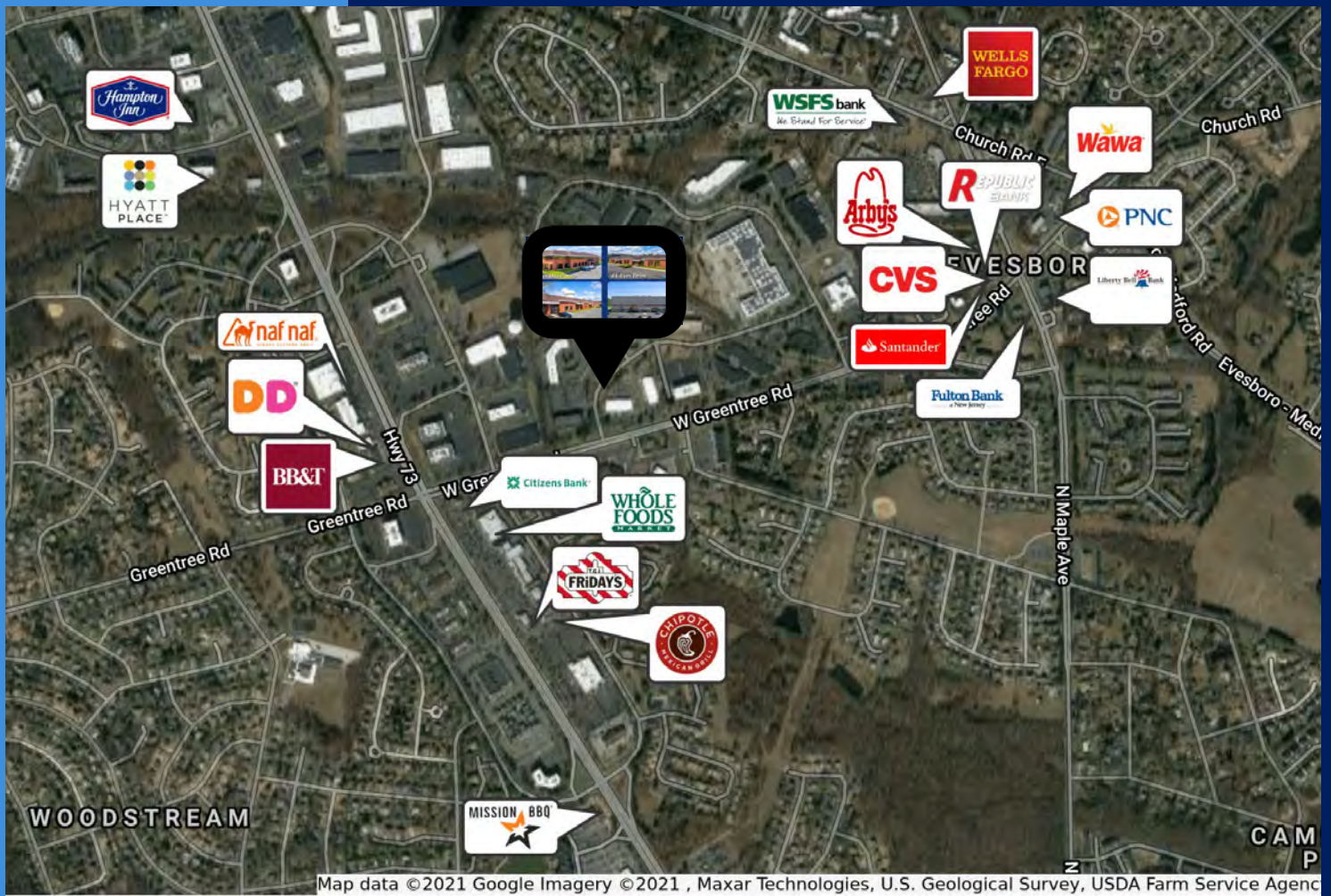
- Full Floor Available - Up to 15,000 SF
- Highly visible building signage available
- Ample Parking 4.70/1,000 SF
- Available for immediate occupancy



**Building  
Signage  
Available**

- Monument tenant directory and suite signage available
- Very efficient layout with open bullpen areas and individual offices
- Immediate access to local amenities, restaurants, retail shopping, hotels, and more
- Conveniently situated just off Route 73, only two miles from the NJ Turnpike, Interstate 295, and Route 70
- Available for immediate occupancy

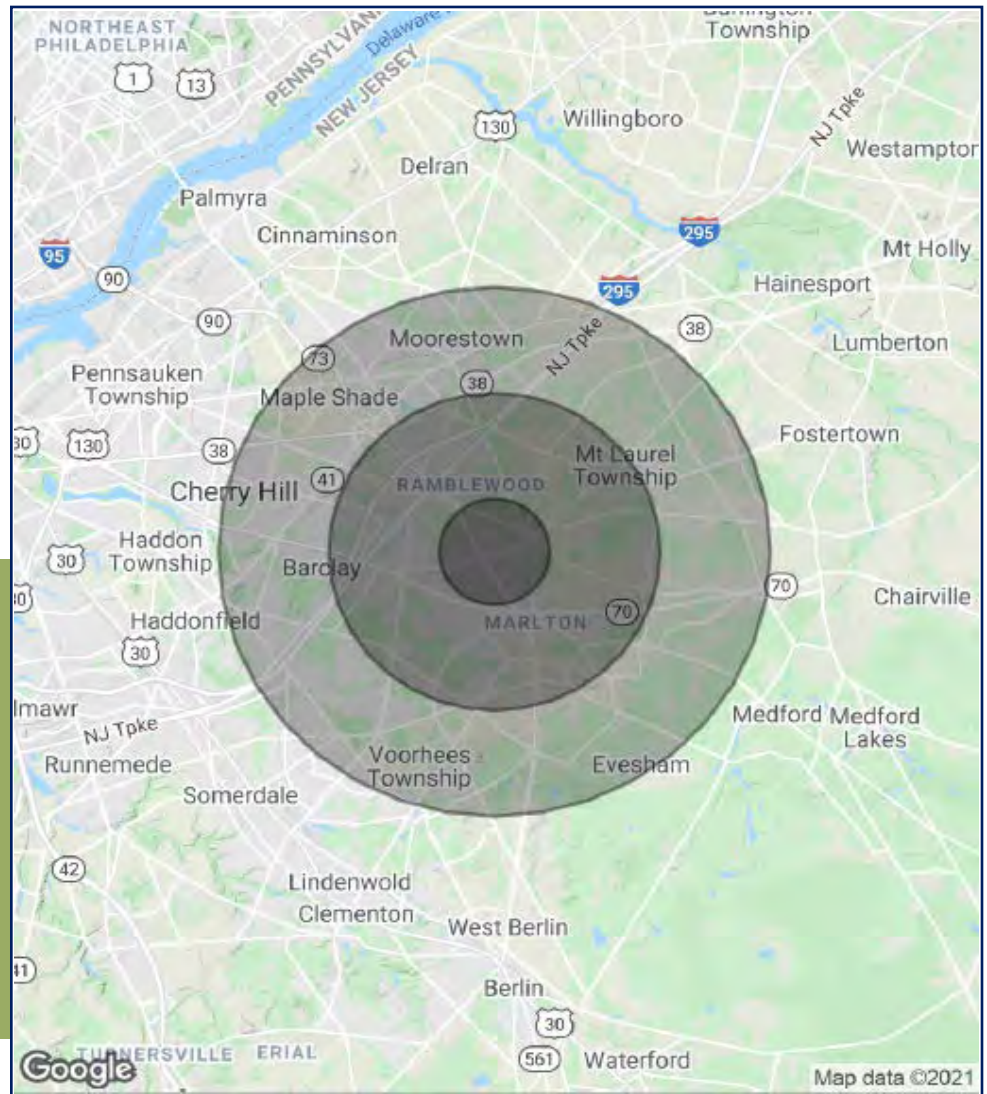
# Aerial Map



- Conveniently situated off of Route 73
- Only two miles from the NJ Turnpike, Interstate 295 & Route 70
- Immediate access to the local amenities, restaurants, retail shopping, hotels, and more



# Demographics



## Contact Us

Bethany Brown  
Vice President  
267.226.6602  
bethany.brown@wolfcre.com

Mike Scanzano  
Senior Advisor  
856.465.6637  
mike.scanzano@wolfcre.com

POPULATION	1 MILE	3 MILES	5 MILES
Total population	8,705	73,031	183,013
Median age	39.7	42.1	42.0
Median age (male)	39.7	40.5	40.4
Median age (Female)	39.9	43.9	43.6
HOUSEHOLDS & INCOME	1 MILE	3 MILES	5 MILES
Total households	3,525	27,128	69,013
# of persons per HH	2.5	2.7	2.7
Average HH income	\$89,309	\$107,708	\$110,392
Average house value	\$288,542	\$320,219	\$357,038

\* Demographic data derived from 2010 US Census

## ADDITIONAL PHOTOS

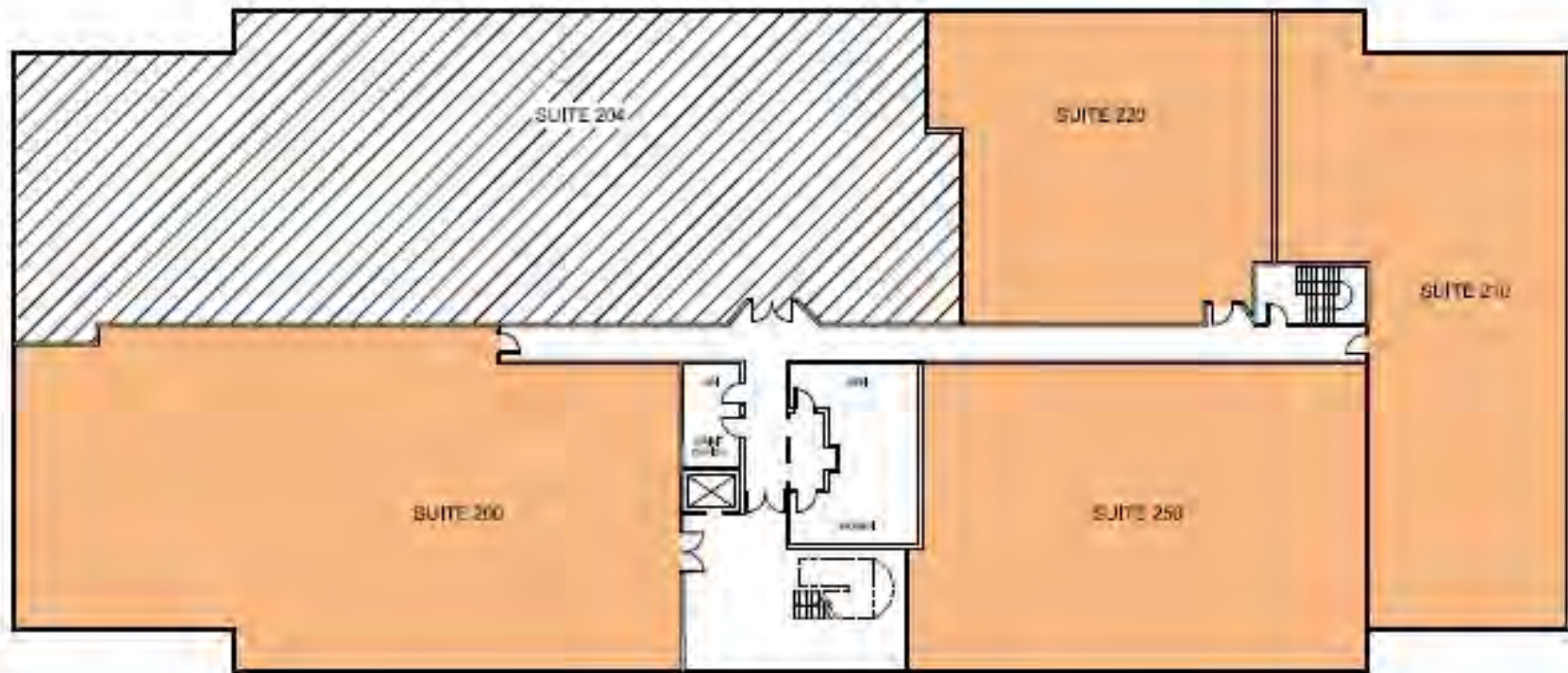


*\*Turn-key fully furnished space in 4B*

The foregoing information was furnished to us by sources which we deem to be reliable, but no warranty or representation is made as to the accuracy thereof. Subject to correction of errors, omissions, change of price, prior sale or withdrawal from market without notice.

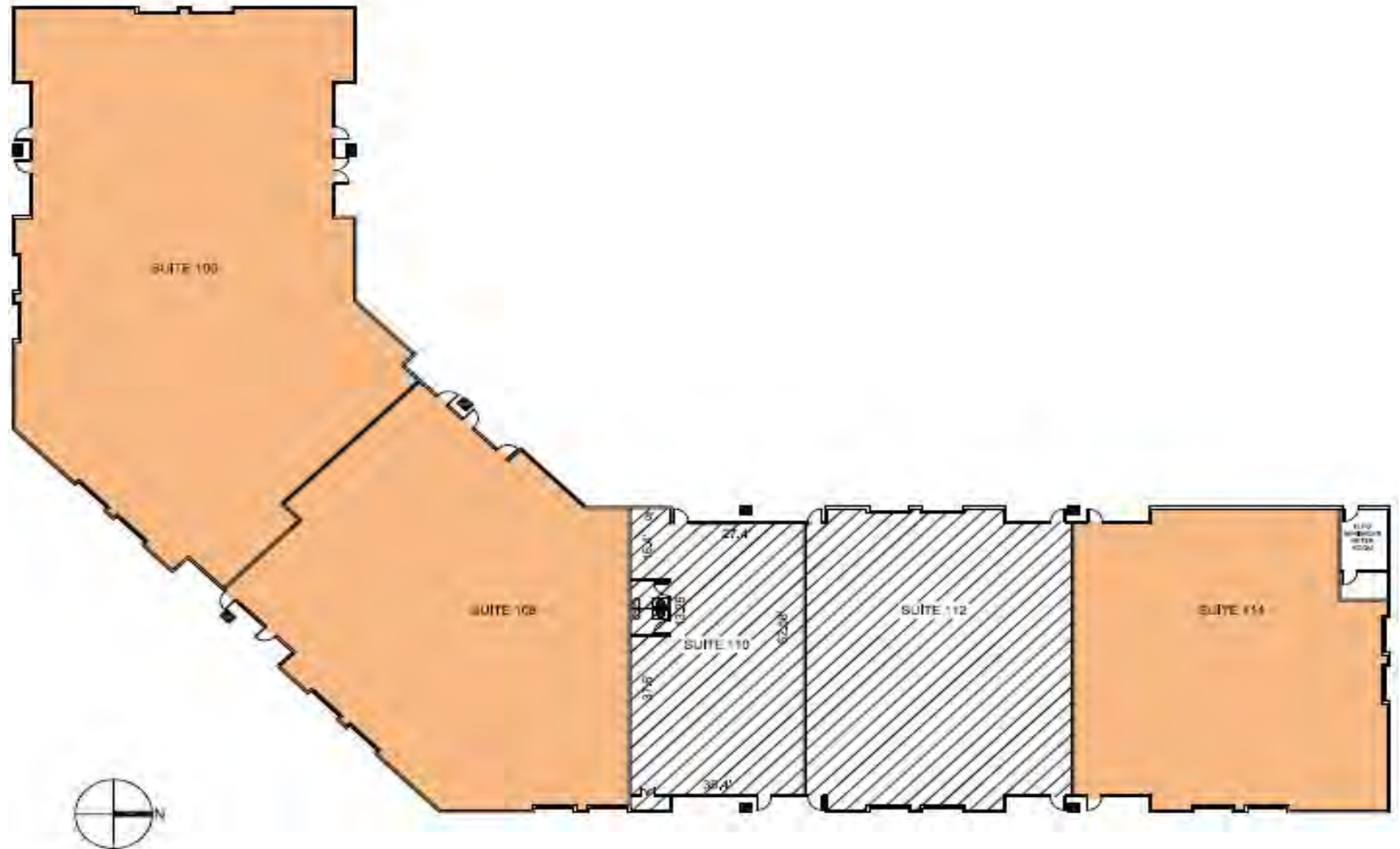


**FLOOR PLANS (SECOND FLOOR)**



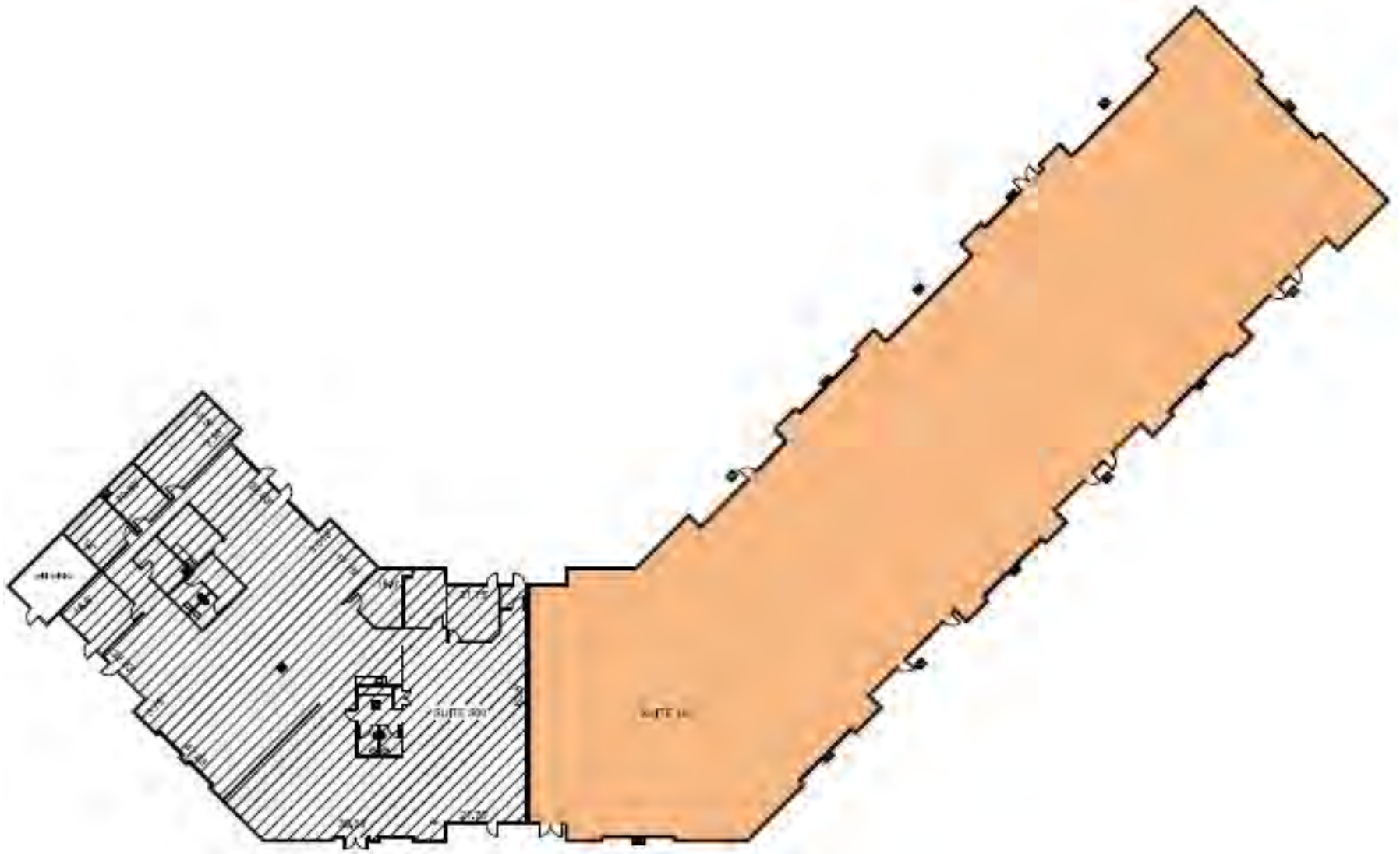
The foregoing information was furnished to us by sources which we deem to be reliable, but no warranty or representation is made as to the accuracy thereof. Subject to correction of errors, omissions, change of price, prior sale or withdrawal from market without notice.

FLOOR PLANS

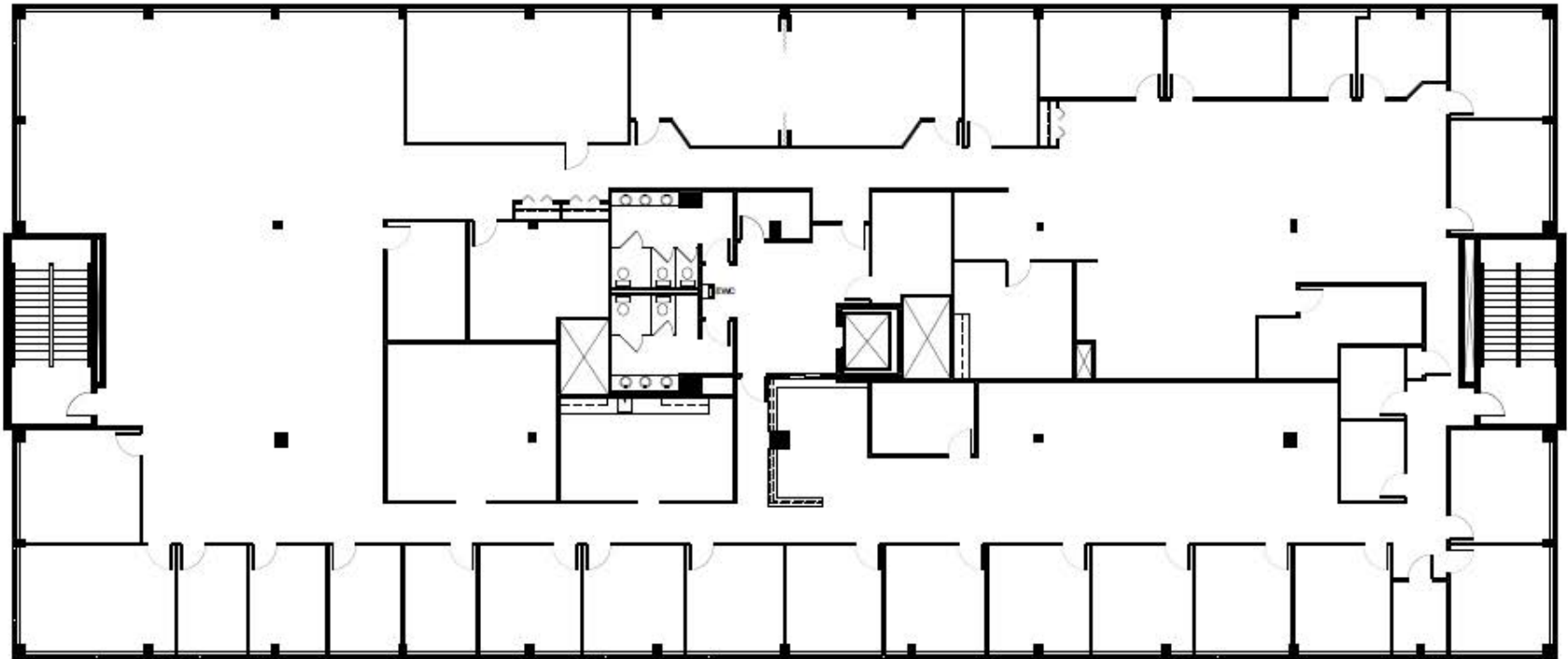


The foregoing information was furnished to us by sources which we deem to be reliable, but no warranty or representation is made as to the accuracy thereof. Subject to correction of errors, omissions, change of price, prior sale or withdrawal from market without notice.





The foregoing information was furnished to us by sources which we deem to be reliable, but no warranty or representation is made as to the accuracy thereof. Subject to correction of errors, omissions, change of price, prior sale or withdrawal from market without notice.



**Record Drawing**

Scale: 1/8" = 1'-0"

The foregoing information was furnished to us by sources which we deem to be reliable, but no warranty or representation is made as to the accuracy thereof. Subject to correction of errors, omissions, change of price, prior sale or withdrawal from market without notice.