



101 RED LION ROAD | SOUTHAMPTON, NJ

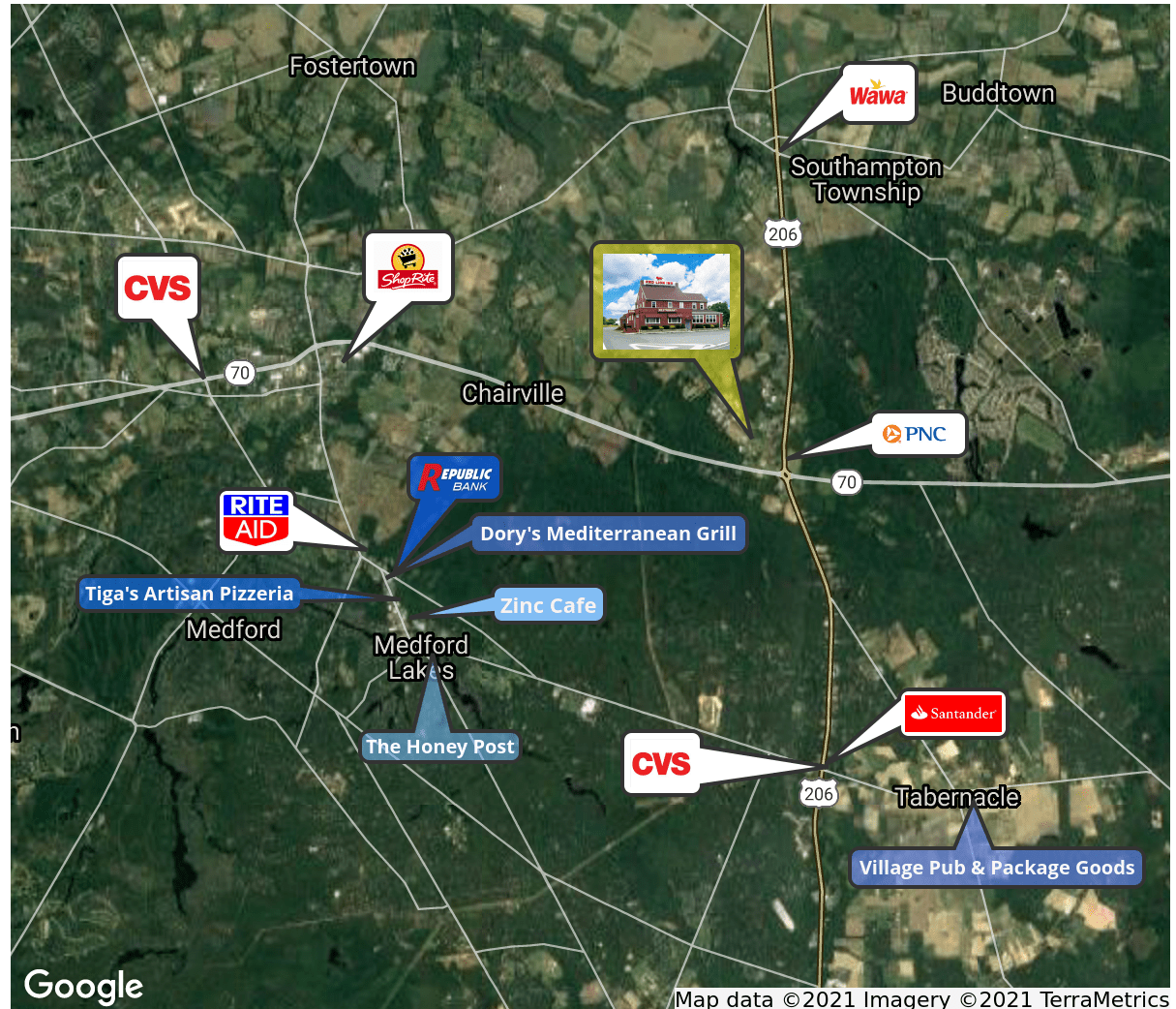


## PROPERTY DESCRIPTION

- Location** 101 Red Lion Road  
Southampton NJ 08088
- Size / SF Available** 5,000 SF
- Sale Price** \$1,400,000
- Property / Area Description**
- Restaurant sits on approximately 1 acre corner lot
  - Includes 8.7 acres currently zoned farm
  - Three-story building
  - Building contains restaurant, bar, kitchen, 4-bed apartment and large open attic
  - All restaurant equipment in kitchen included in sale
  - Huge, well maintained, modern kitchen
  - Beautiful, circular bar with seating for over 40 Liquor license and restaurant business also available separately
  - Sits just off heavily travelled Routes 70 and 206 Large, well-kept parking lot
  - Potential for winery or reception hall for events
  - Basement offers additional storage for supplies

## Contact Us

Ryan Barikian  
Vice President  
856.857.6307  
ryan.barikian@wolfcre.com



follow us:    

The foregoing information was furnished to us by sources which we deem to be reliable, but no warranty or representation is made as to the accuracy thereof. Subject to correction of errors, omissions, change of price, prior sale or withdrawal from market without notice.



RESTAURANT



The foregoing information was furnished to us by sources which we deem to be reliable, but no warranty or representation is made as to the accuracy thereof. Subject to correction of errors, omissions, change of price, prior sale or withdrawal from market without notice.



LIVING AREA



The foregoing information was furnished to us by sources which we deem to be reliable, but no warranty or representation is made as to the accuracy thereof. Subject to correction of errors, omissions, change of price, prior sale or withdrawal from market without notice.



KITCHEN



The foregoing information was furnished to us by sources which we deem to be reliable, but no warranty or representation is made as to the accuracy thereof. Subject to correction of errors, omissions, change of price, prior sale or withdrawal from market without notice.



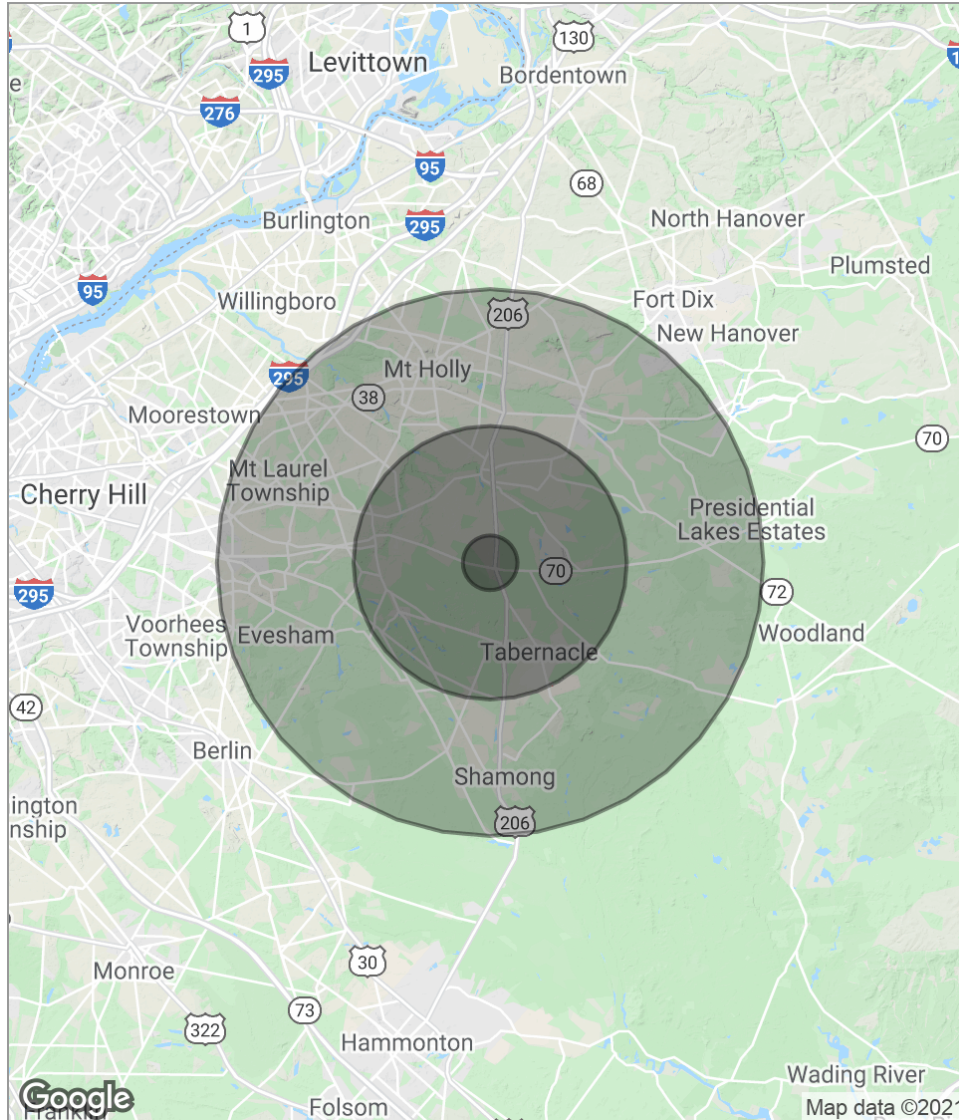
STORAGE



The foregoing information was furnished to us by sources which we deem to be reliable, but no warranty or representation is made as to the accuracy thereof. Subject to correction of errors, omissions, change of price, prior sale or withdrawal from market without notice.



## DEMOGRAPHICS MAP



POPULATION	1 MILE	5 MILES	10 MILES
Total population	538	20,970	142,459
Median age	45.0	42.9	39.5
Median age (male)	46.0	42.3	39.0
Median age (Female)	43.8	43.2	40.3
HOUSEHOLDS & INCOME	1 MILE	5 MILES	10 MILES
Total households	192	7,551	52,141
# of persons per HH	2.8	2.8	2.7
Average HH income	\$109,199	\$117,279	\$103,113
Average house value		\$366,361	\$352,660

*\* Demographic data derived from 2010 US Census*

The foregoing information was furnished to us by sources which we deem to be reliable, but no warranty or representation is made as to the accuracy thereof. Subject to correction of errors, omissions, change of price, prior sale or withdrawal from market without notice.