



53 Haddonfield Road, Cherry Hill, NJ

PREMIER CHERRY HILL OFFICE SPACE AVAILABLE FOR LEASE

57 Haddonfield Road, Cherry Hill, NJ



Wolf Commercial Real Estate



MARLTON • NJ | PHILADELPHIA | KING OF PRUSSIA • PA



53 HADDONFIELD ROAD AVAILABLE FOR LEASE

- 11,000 - 29,475 SF Available
- \$9.00/SF NNN
- Ample Parking 4.23/1,000 sf
- Available for immediate occupancy

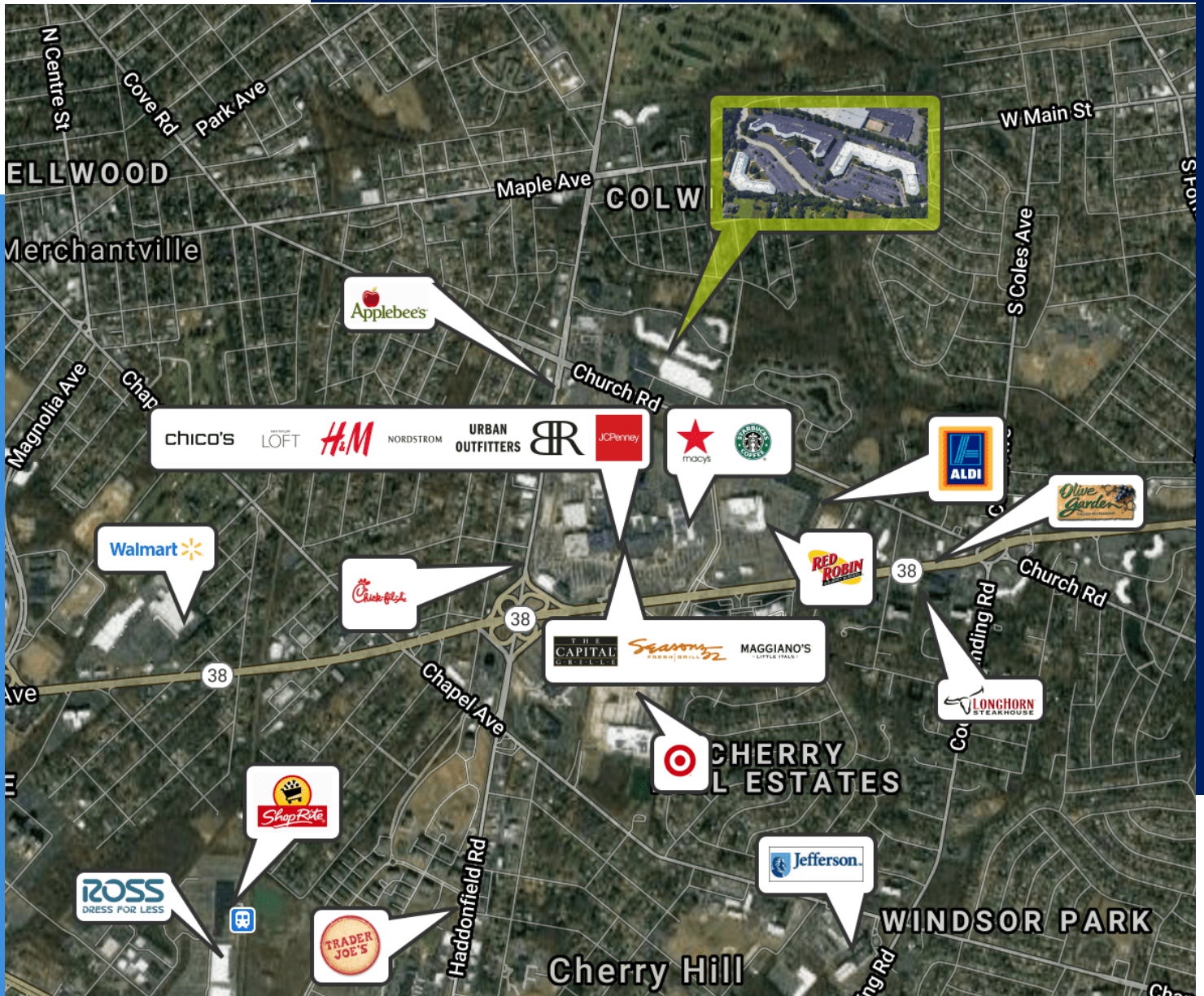
57 HADDONFIELD ROAD AVAILABLE FOR LEASE

- 2,500 - 9,929 SF Available
- \$9.00/SF NNN
- Ample Parking 4.23/1,000 sf
- Available for immediate occupancy



- Monument tenant directory and suite signage available
- Single-story buildings with no loss factor and direct, private 24/7 access to each tenant suite
- Very efficient layout with open bullpen areas and individual offices
- Convenient access to multiple NJ Transit Bus Routes
- Located in the business district of Cherry Hill, NJ at the intersection of Haddonfield and Church Road providing for easy access to Route 38, Route 70, 73, I-295 with convenient access to Philadelphia via the Benjamin Franklin Bridge and Betsy Ross Bridge
- Close proximity to local amenities (Cherry Hill Mall, Garden State Towne Center, banks, restaurants, etc.)

Aerial Map



Located in the business district of Cherry Hill, NJ at the intersection of Haddonfield and Church Road providing for easy access to Route 38, Route 70, 73, I-295 with convenient access to Philadelphia via the Benjamin Franklin Bridge and Betsy Ross Bridge

Close proximity to local amenities (Cherry Hill Mall, Garden State Towne Center, banks, restaurants, etc.)

53 HADDONFIELD ROAD

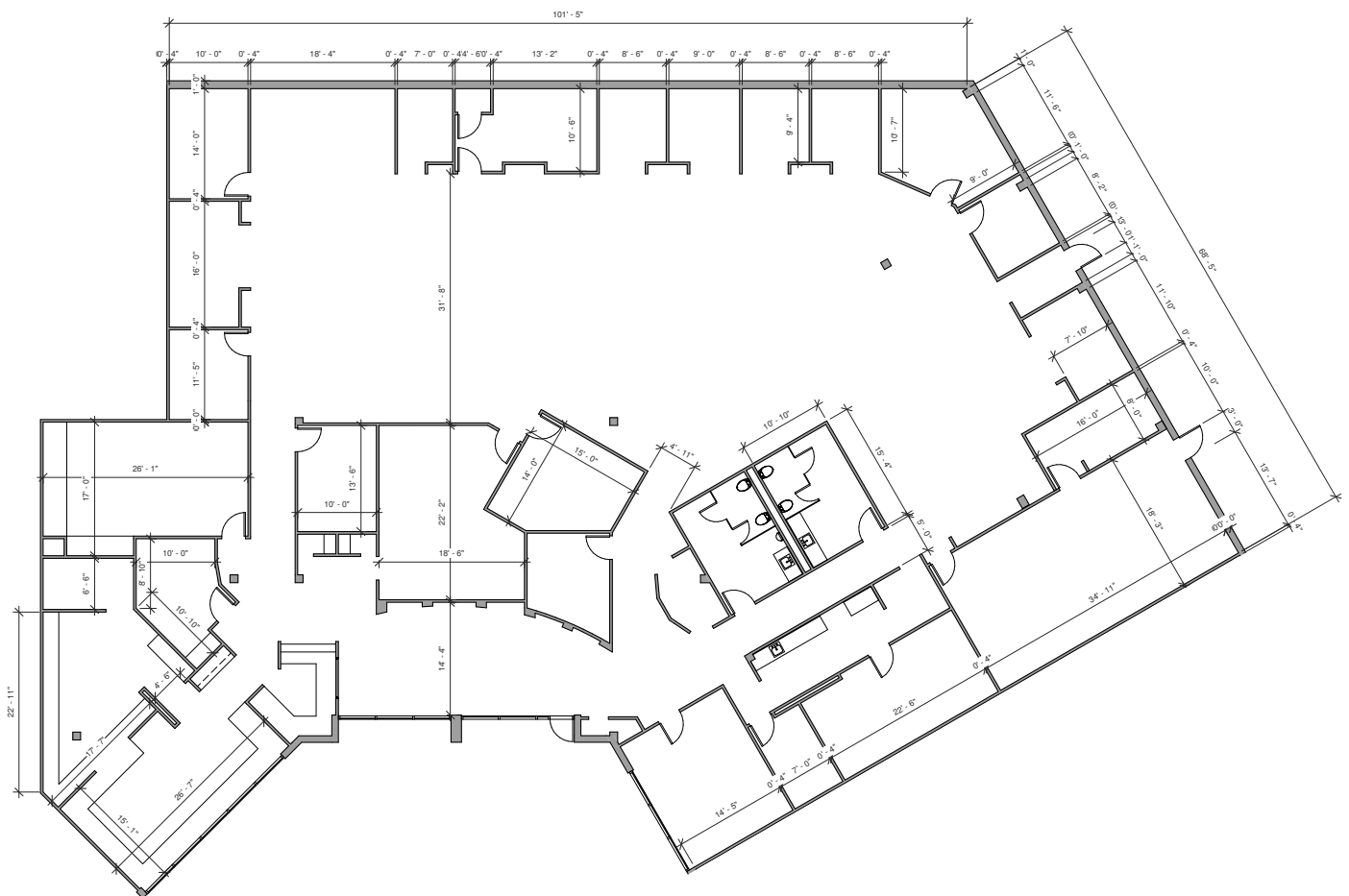
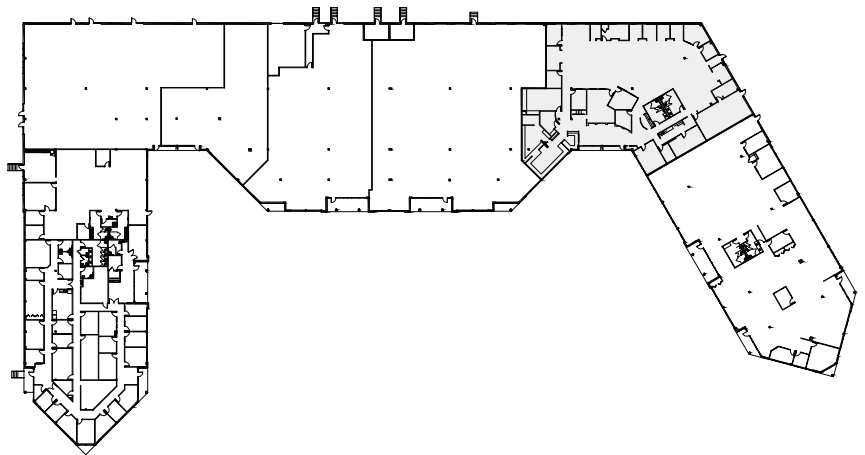


57 HADDONFIELD ROAD



- Monument tenant directory and suite signage available
- Single-story buildings with no loss factor and direct, private 24/7 access to each tenant suite
- Very efficient layout with open bullpen areas and individual offices

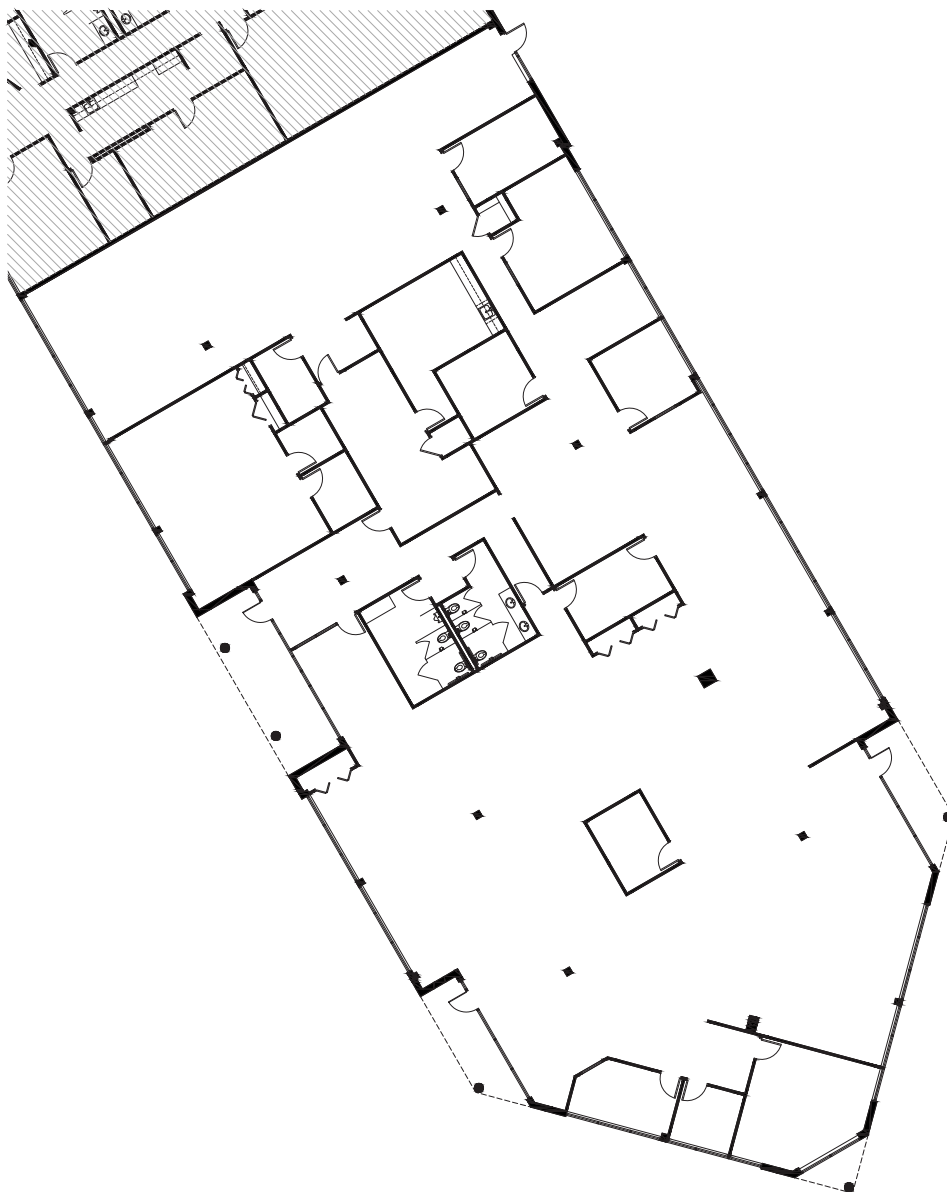
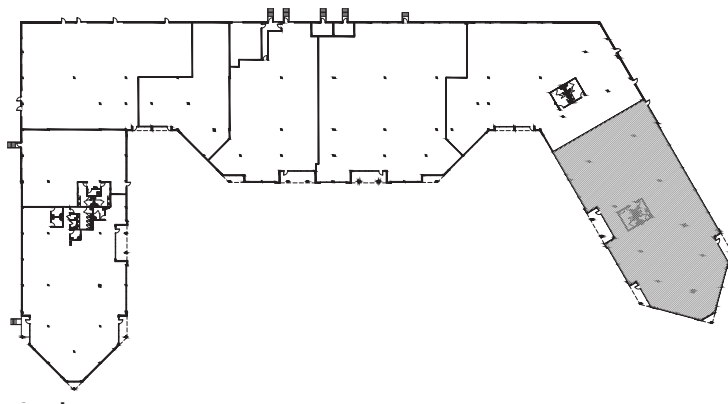
11,498 SF



53 HADDONFIELD ROAD

FLOOR PLAN - 300

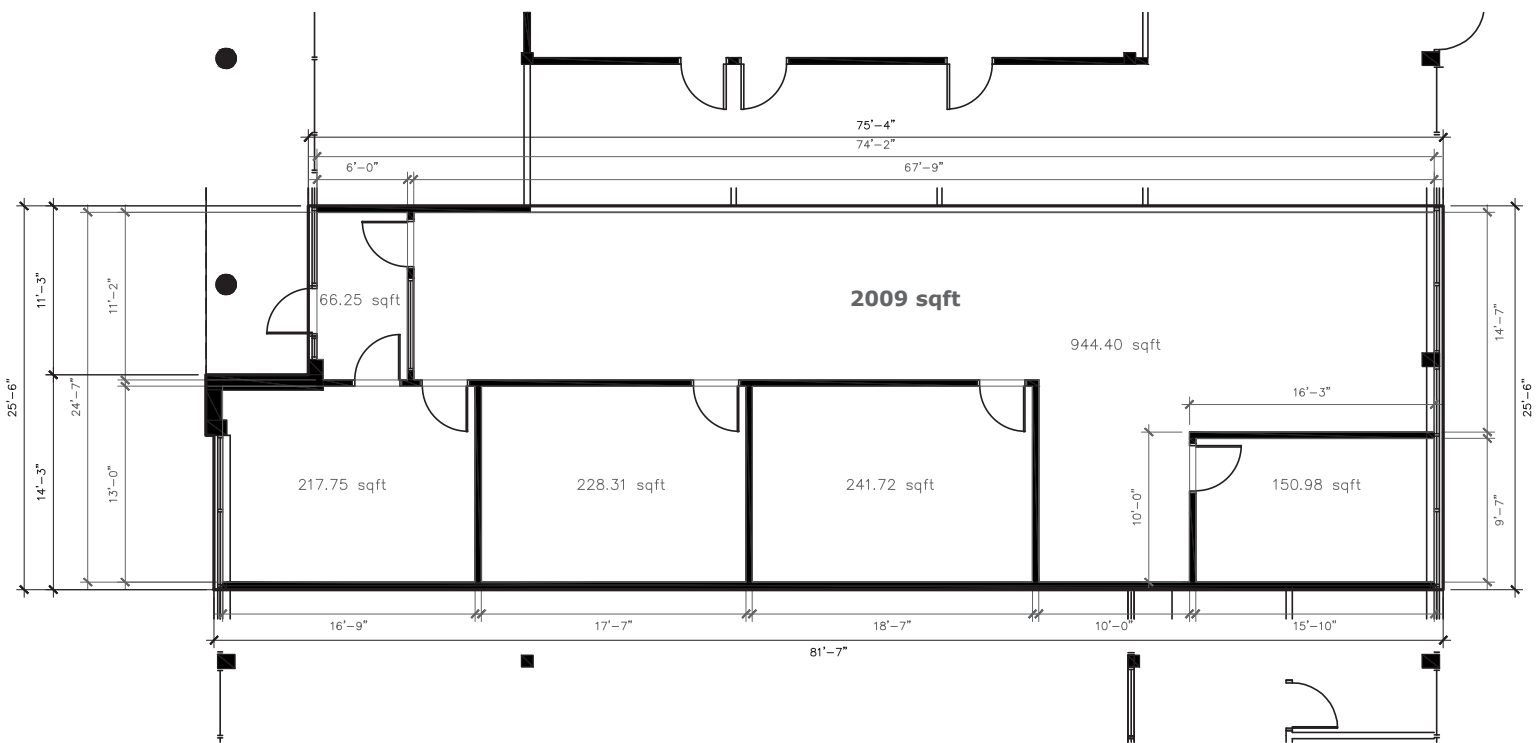
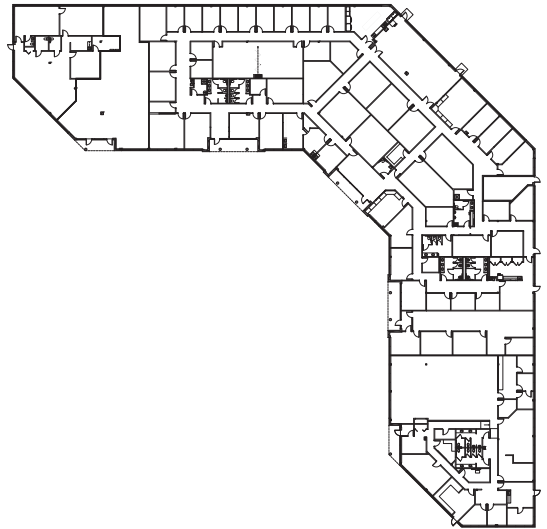
12,578 SF



57 HADDONFIELD ROAD

FLOOR PLAN - SUITE 110

2,852 SF



Demographics



Contact Us

Bethany Brown
Vice President
bethany.brown@wolfcre.com
856.857.6396

John Mozzillo
Executive Vice President
john.mozzillo@wolfcre.com
856.857.6304

POPULATION	1 MILE	3 MILES	5 MILES
Total population	8,646	101,021	276,404
Median age	41.1	39.8	39.2
Median age (male)	39.9	37.7	37.5
Median age (Female)	42.8	41.8	40.9
HOUSEHOLDS & INCOME	1 MILE	3 MILES	5 MILES
Total households	3,299	38,899	105,640
# of persons per HH	2.6	2.6	2.6
Average HH income	\$78,525	\$79,092	\$81,876
Average house value	\$240,223	\$255,884	\$266,106

* Demographic data derived from 2010 US Census