

PREMIER CHERRY HILL OFFICE SPACE AVAILABLE FOR LEASE



COLWICK BUSINESS CENTER 53 HADDONFIELD ROAD CHERRY HILL, NJ



Jason Wolf
Managing Director
856 857 6300
jason.wolf@wolfcre.com

Bethany Brown
Vice President
267.226.6602
bethany.brown@wolfcre.com

John T. Mozzillo
Executive Vice President
856.857.6304
john.mozzillo@wolfcre.com

The foregoing information was furnished to us by sources which we deem to be reliable, but no warranty or representation is made as to the accuracy thereof.
Subject to correction of errors, omissions, change of price, prior sale or withdrawal from market without notice.



Wolf Commercial Real Estate
www.WolfCRE.com



PROPERTY DESCRIPTION

Location:	Colwick Business Center 53 Haddonfield Road Cherry Hill, NJ
Size/SF Available:	11,000 - 24,000 SF
Lease Price:	\$9.00/SF NNN
Signage:	Directory & suite

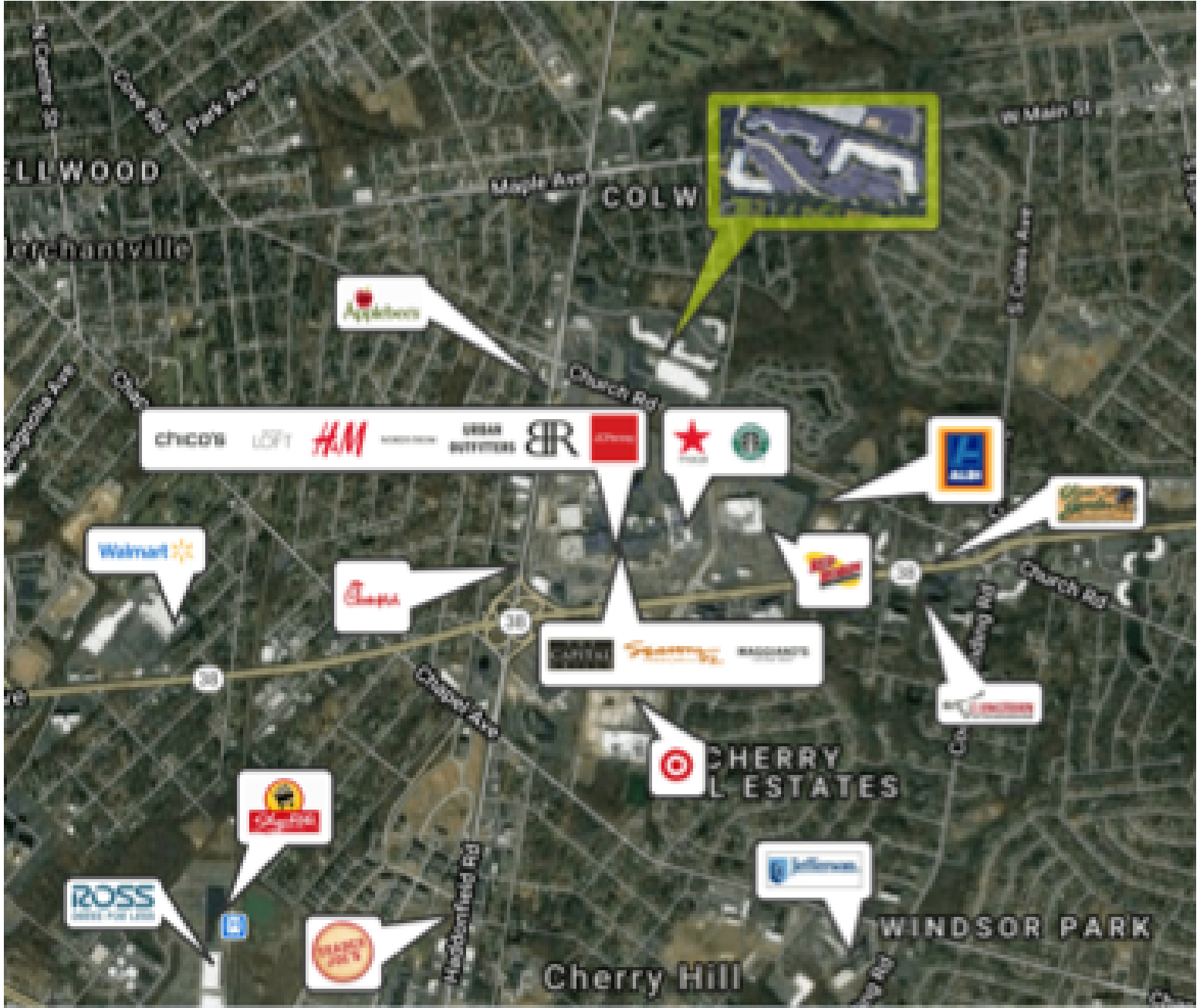


PROPERTY AREA/HIGHLIGHTS

- Available for immediate occupancy
- Ample Parking 4.23/1,000 sf
- Single-story buildings with no loss factor and direct, private 24/7 access to each tenant suite
- Efficient layout with open bullpen areas and individual offices
- Located in the business district of Cherry Hill, NJ at the intersection of Haddonfield and Church Road providing for easy access to Route 38, Route 70, 73, I-295 with convenient access to Philadelphia via the Benjamin Franklin Bridge and Betsy Ross Bridge
- Convenient access to multiple NJ Transit Bus Routes
- Close proximity to local amenities (Cherry Hill Mall, Garden State Towne Center, banks, restaurants, etc.)

The foregoing information was furnished to us by sources which we deem to be reliable, but no warranty or representation is made as to the accuracy thereof. Subject to correction of errors, omissions, change of price, prior sale or withdrawal from market without notice.

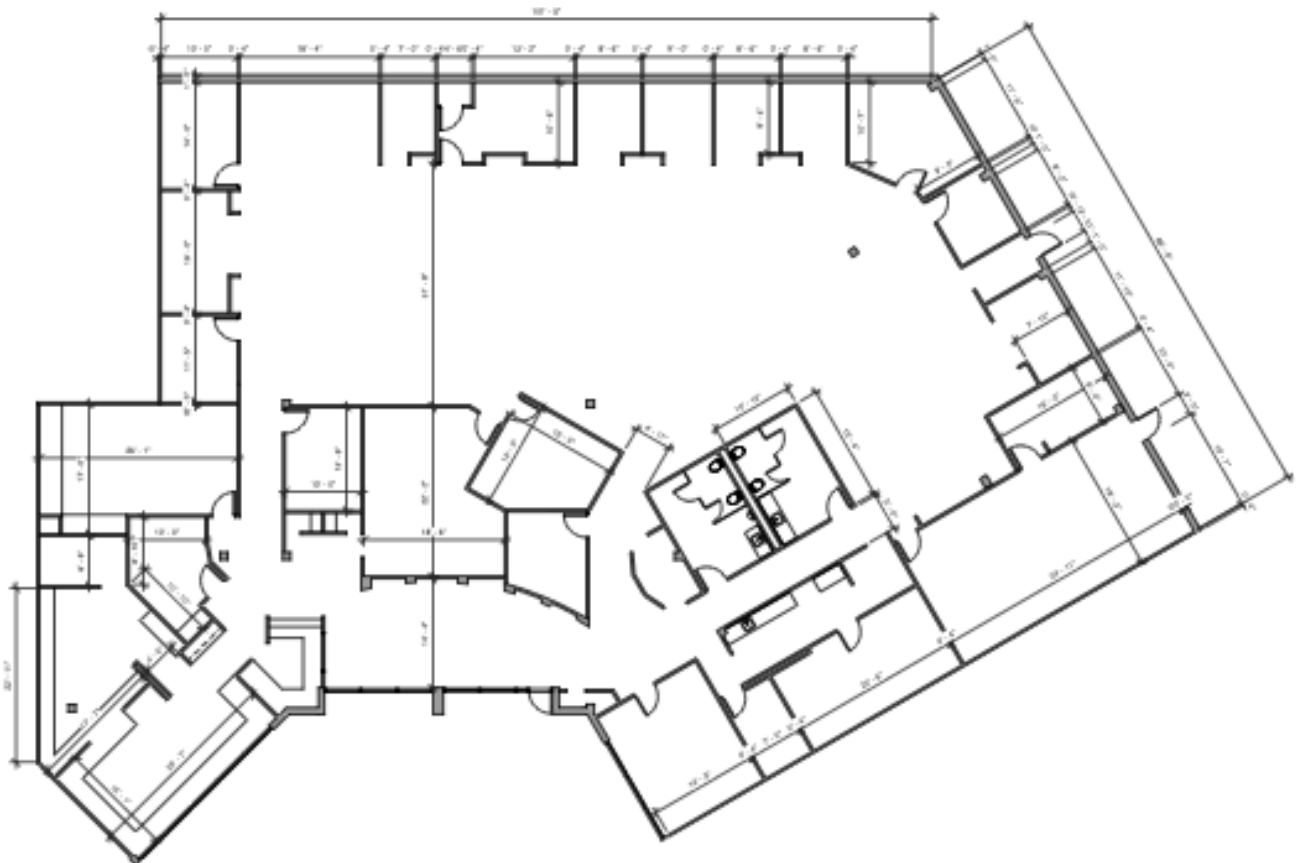
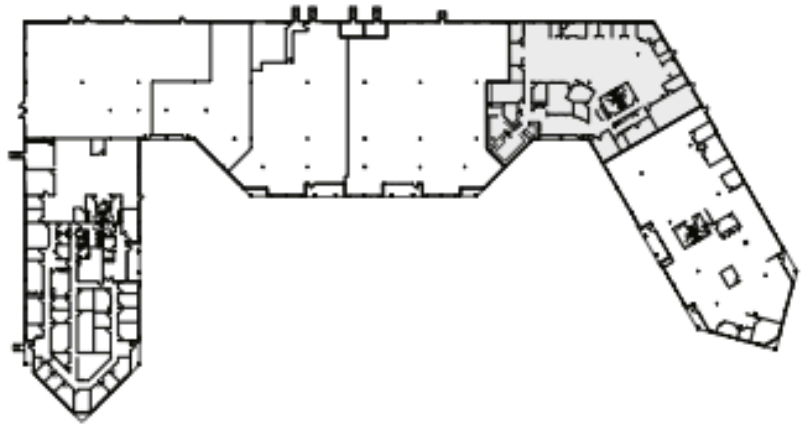
ARIEAL MAP



The foregoing information was furnished to us by sources which we deem to be reliable, but no warranty or representation is made as to the accuracy thereof. Subject to correction of errors, omissions, change of price, prior sale or withdrawal from market without notice.

FLOOR PLAN

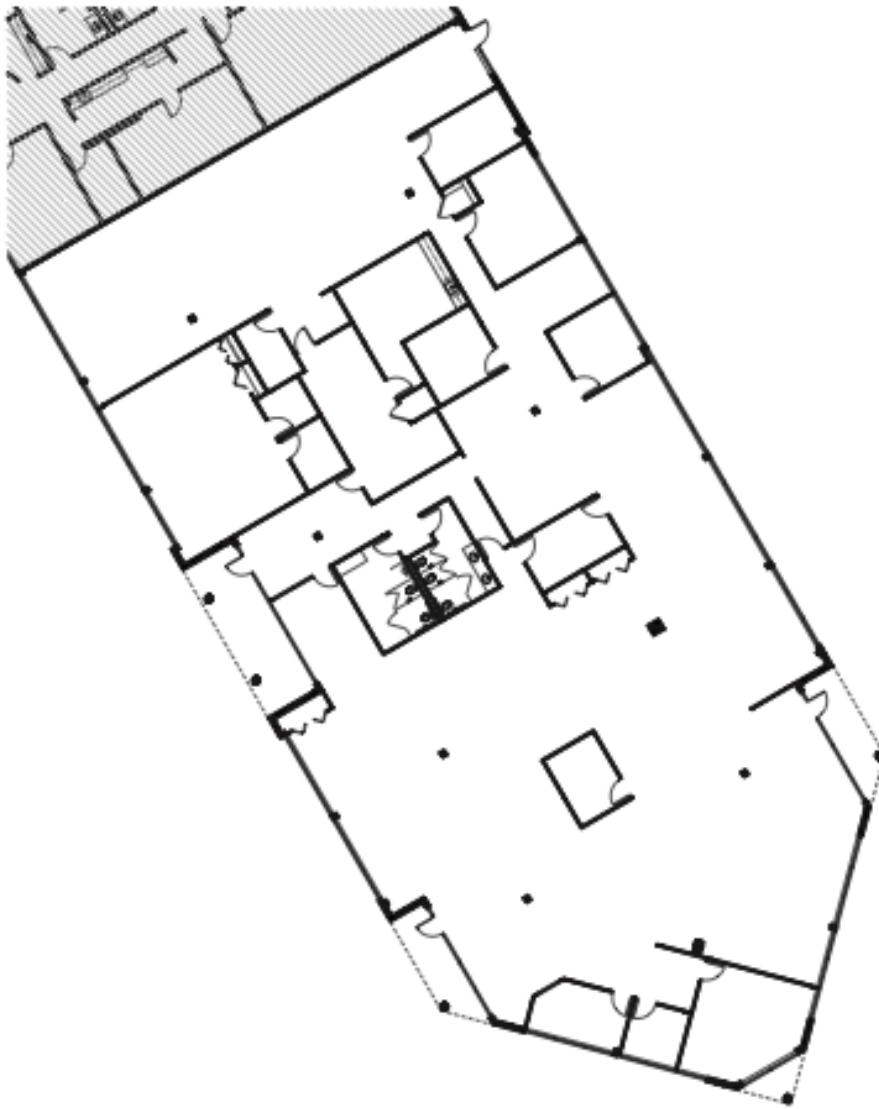
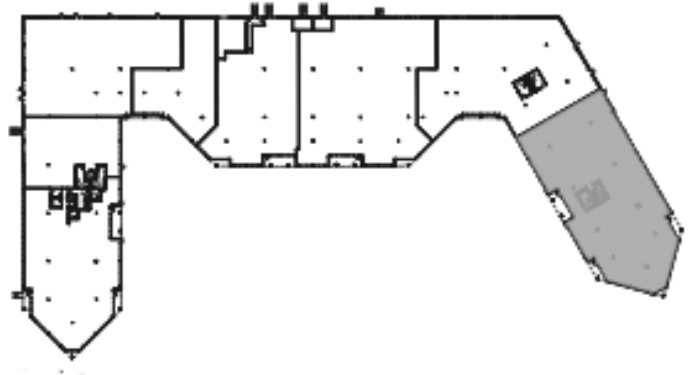
FLOOR PLAN - SUITE 306
11,498 SF



The foregoing information was furnished to us by sources which we deem to be reliable, but no warranty or representation is made as to the accuracy thereof. Subject to correction of errors, omissions, change of price, prior sale or withdrawal from market without notice.

FLOOR PLAN

FLOOR PLAN - 300
12,578 SF



The foregoing information was furnished to us by sources which we deem to be reliable, but no warranty or representation is made as to the accuracy thereof. Subject to correction of errors, omissions, change of price, prior sale or withdrawal from market without notice.