



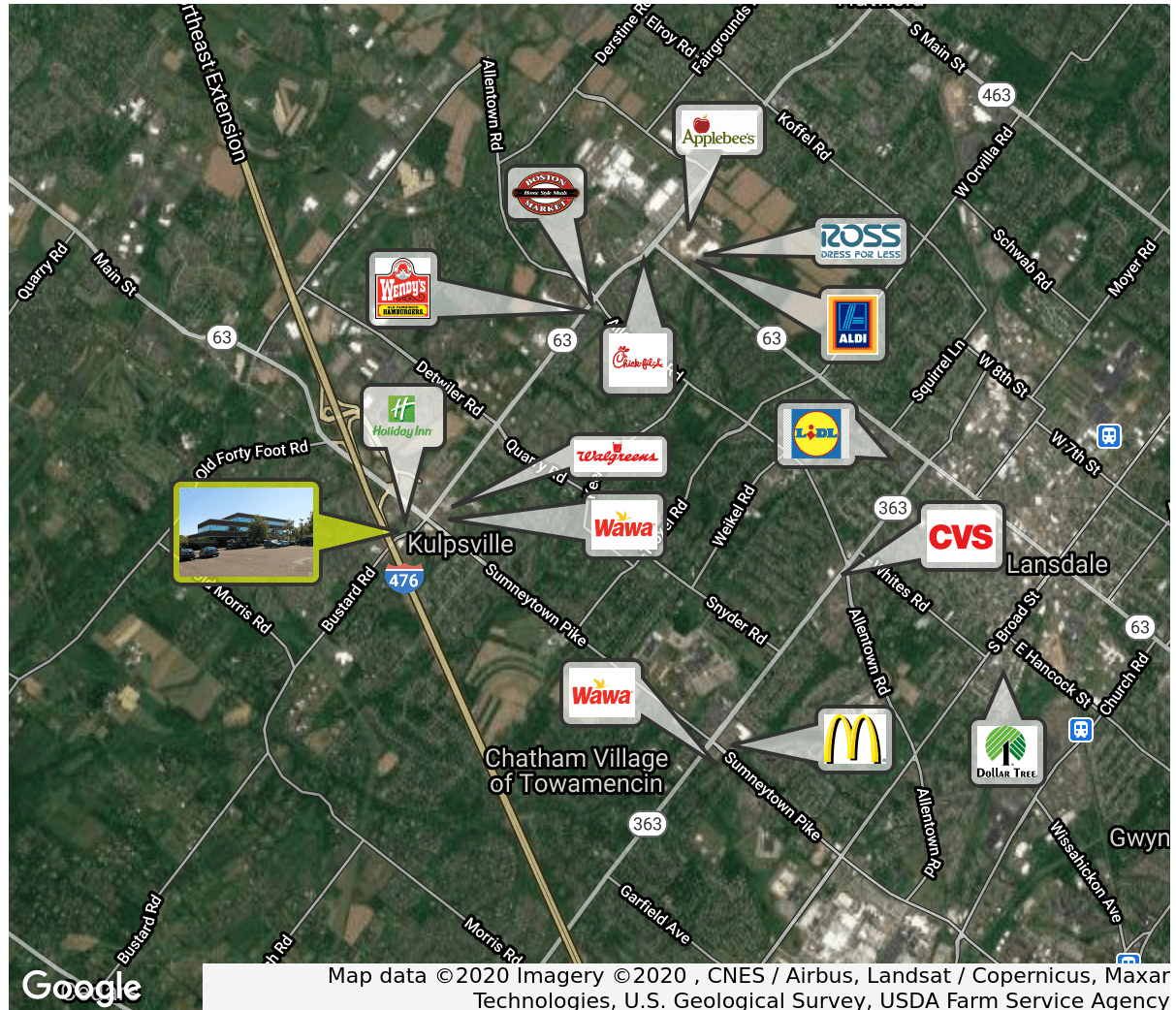
1555 BUSTARD ROAD | LANSDALE, PA

PROPERTY DESCRIPTION

- Location** 1555 Bustard Road
Lansdale, PA 19446
- Size / SF Available** +/- 13,094 SF
- Lease Price** Call for more information
- Property / Area Description**
- +/- 13,094 SF of plug-and-play office space
 - Furniture can be made available
 - Two private decks
 - Upgraded finishes throughout
 - Two (2) years left on term

Contact Us

Mitch Russell
Senior Associate
215.799.6143
Mitch.Russell@wolfcre.com



follow us:    

The foregoing information was furnished to us by sources which we deem to be reliable, but no warranty or representation is made as to the accuracy thereof. Subject to correction of errors, omissions, change of price, prior sale or withdrawal from market without notice.

ADDITIONAL PHOTOS



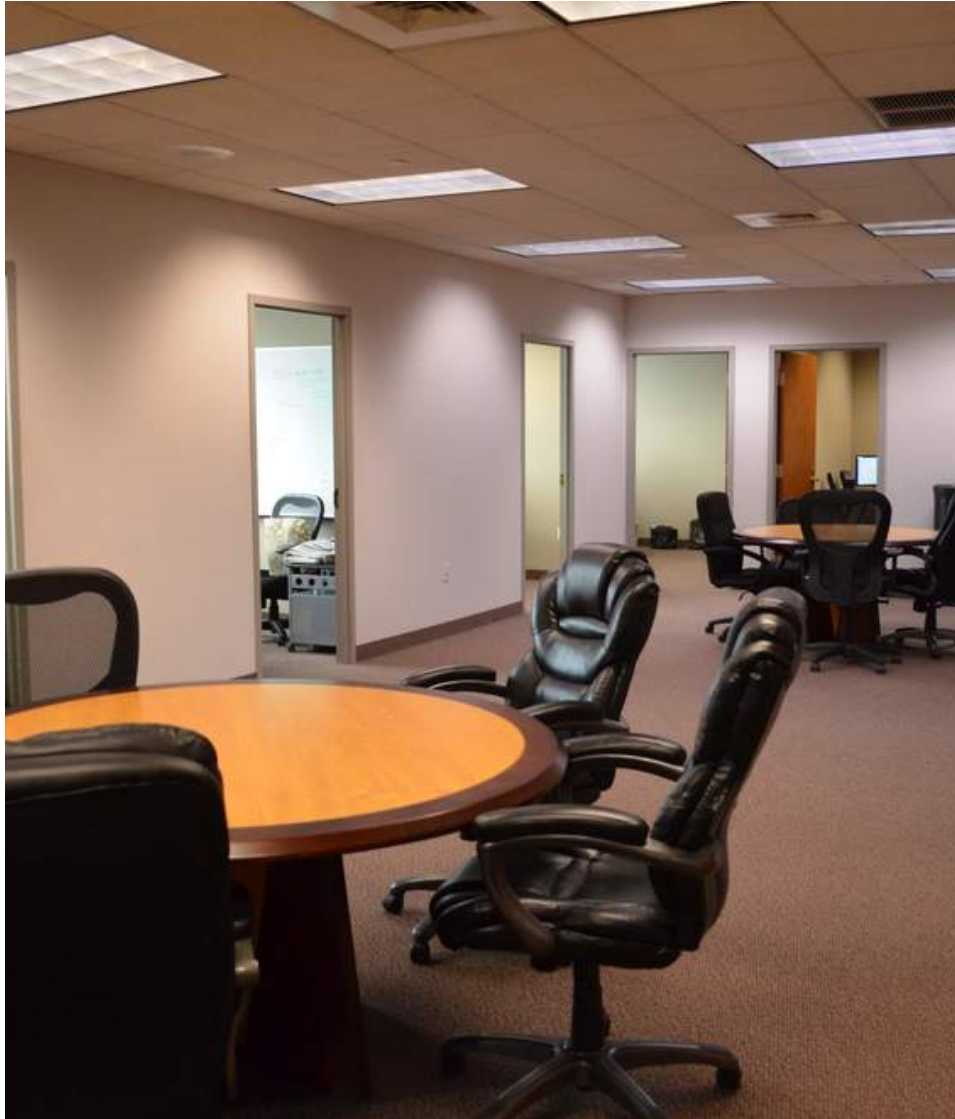
The foregoing information was furnished to us by sources which we deem to be reliable, but no warranty or representation is made as to the accuracy thereof. Subject to correction of errors, omissions, change of price, prior sale or withdrawal from market without notice.

ADDITIONAL PHOTOS



The foregoing information was furnished to us by sources which we deem to be reliable, but no warranty or representation is made as to the accuracy thereof. Subject to correction of errors, omissions, change of price, prior sale or withdrawal from market without notice.

ADDITIONAL PHOTOS



The foregoing information was furnished to us by sources which we deem to be reliable, but no warranty or representation is made as to the accuracy thereof. Subject to correction of errors, omissions, change of price, prior sale or withdrawal from market without notice.

ADDITIONAL PHOTOS

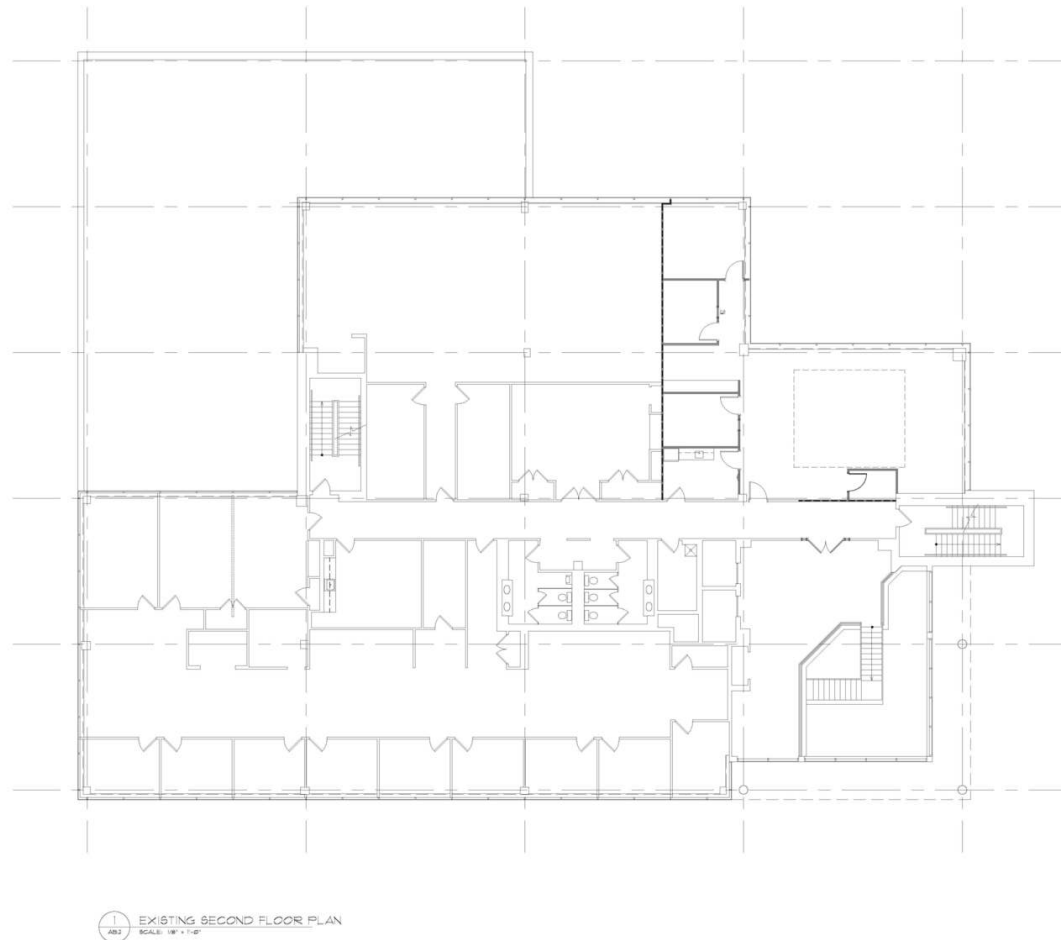


The foregoing information was furnished to us by sources which we deem to be reliable, but no warranty or representation is made as to the accuracy thereof. Subject to correction of errors, omissions, change of price, prior sale or withdrawal from market without notice.



Wolf Commercial Real Estate
www.WolfCRE.com

MARLTON, NJ | PHILADELPHIA | KING OF PRUSSIA, PA



AB.2

The foregoing information was furnished to us by sources which we deem to be reliable, but no warranty or representation is made as to the accuracy thereof. Subject to correction of errors, omissions, change of price, prior sale or withdrawal from market without notice.

3RD FLOOR PLAN



**SPEARMAN
ASSOCIATES, LTD.**

2270 Mt. Carmel Ave.
Olivette, PA
Tel 215.886.0213
Fax 215.886.5161
www.spearmanarchitects.com

OWNER
COMPANY
SPEARMAN ASSOCIATES
TOWNSHIP, PA 150
TEL 800.000.0000

CONSULTING ENGINEER
COMPANY
SPEARMAN ASSOCIATES
TOWNSHIP, PA 150
TEL 800.000.0000

MECHANICAL/ELECTRICAL/PLUMBING
COMPANY
SPEARMAN ASSOCIATES
TOWNSHIP, PA 150
TEL 800.000.0000

**EXISTING
THIRD
FLOOR PLAN**

1555 BUSTARD ROAD
LANSDALE, PA 19438

Scale: 1/8" = 1'-0"

Author: Ashley Spearman, AIA, LEED

Checker: _____

Reviewer: _____

Project Architect: _____

Drawn By: _____

Checked By: _____

Date: 05/05/2011

Scale: 1/8" = 1'-0"

Project Architect: _____

Drawn By: _____

Checked By: _____

Date: 05/05/2011

Scale: 1/8" = 1'-0"

Project Architect: _____

Drawn By: _____

Checked By: _____

Date: 05/05/2011

Scale: 1/8" = 1'-0"

Project Architect: _____

Drawn By: _____

Checked By: _____

Date: 05/05/2011

Scale: 1/8" = 1'-0"

Project Architect: _____

Drawn By: _____

Checked By: _____

Date: 05/05/2011

Scale: 1/8" = 1'-0"

Project Architect: _____

Drawn By: _____

Checked By: _____

Date: 05/05/2011

Scale: 1/8" = 1'-0"

Project Architect: _____

Drawn By: _____

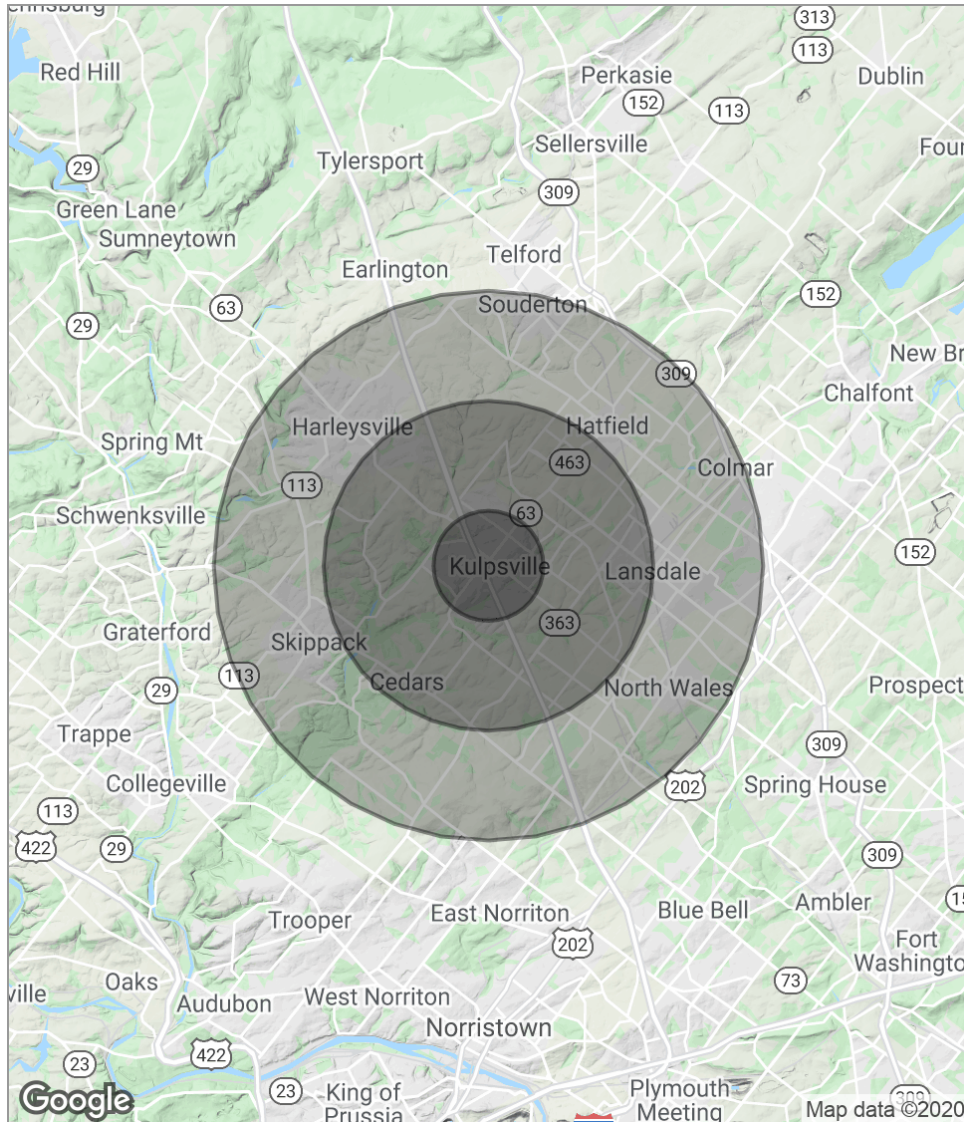
Checked By: _____

Date: 05/05/2011

AB.3

The foregoing information was furnished to us by sources which we deem to be reliable, but no warranty or representation is made as to the accuracy thereof. Subject to correction of errors, omissions, change of price, prior sale or withdrawal from market without notice.

DEMOGRAPHICS MAP



POPULATION	1 MILE	3 MILES	5 MILES
Total population	5,069	41,110	120,184
Median age	44.6	42.5	41.0
Median age (male)	41.8	40.6	39.7
Median age (Female)	46.0	43.8	42.1
HOUSEHOLDS & INCOME	1 MILE	3 MILES	5 MILES
Total households	2,129	16,430	47,880
# of persons per HH	2.4	2.5	2.5
Average HH income	\$95,468	\$98,878	\$92,996
Average house value	\$381,207	\$389,607	\$353,504

** Demographic data derived from 2010 US Census*

The foregoing information was furnished to us by sources which we deem to be reliable, but no warranty or representation is made as to the accuracy thereof. Subject to correction of errors, omissions, change of price, prior sale or withdrawal from market without notice.