



PREMIER MOORESTOWN FLEX PROPERTY AVAILABLE FOR LEASE OR SALE



1249 GLEN AVENUE | MOORESTOWN, NJ



Wolf Commercial Real Estate
www.WolfCRE.com



PROPERTY DESCRIPTION

Location 1249 Glen Avenue
Moorestown, NJ 08057

Size / SF Available +/- 20,120 SF

Lease Price \$10.00/SF NNN

Sale Price Call for more information

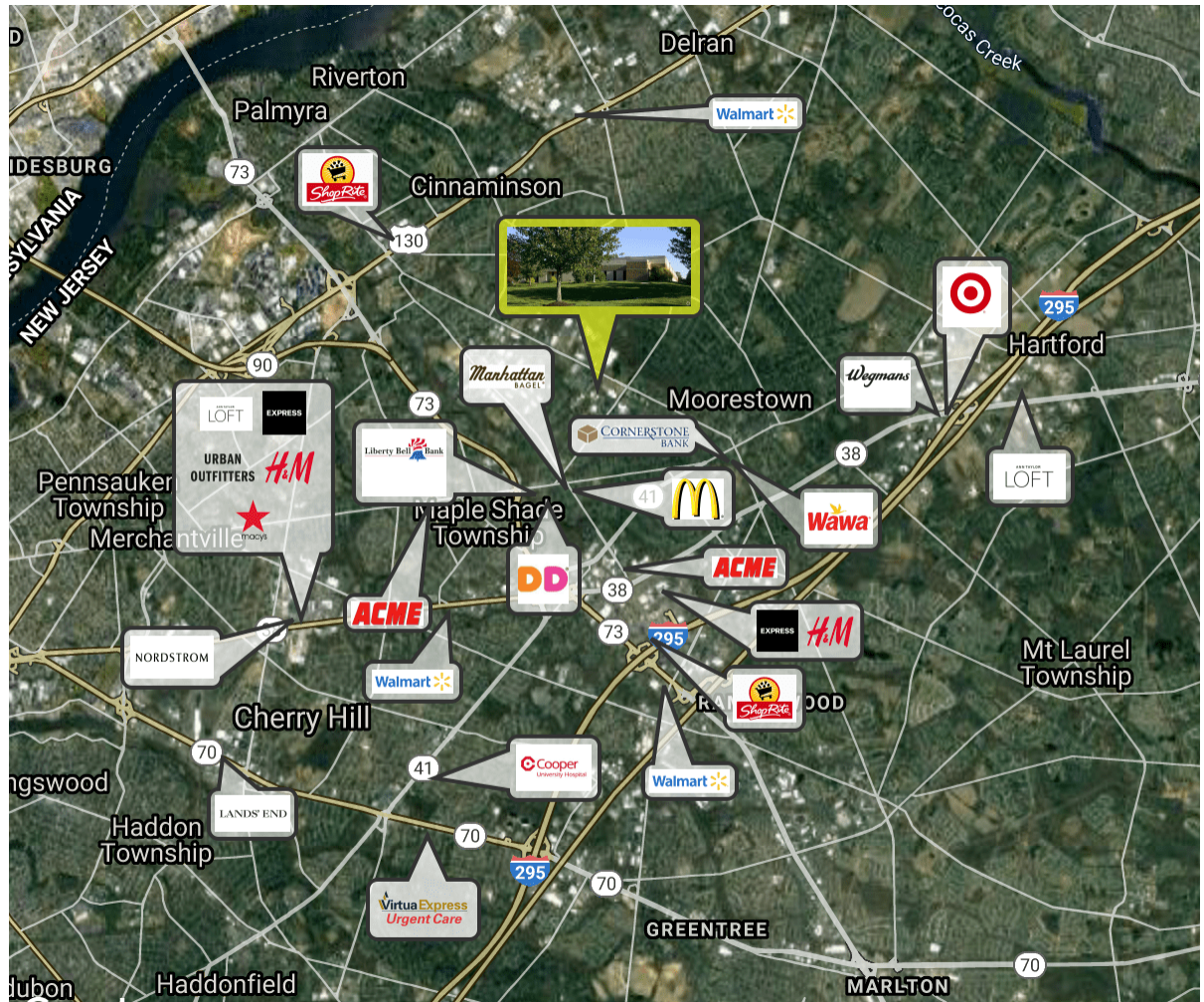
- Property / Area Description**
- Single story flex office/industrial property available for immediate occupancy
 - Situated on +/- 2.91 Acres (Site Shared with Proposed 14,400 SF Rear Building)
 - 5.22/1000 SF Parking Ratio
 - 1 Loading Dock 12' Ceiling Height
 - Close proximity to Route 73, I-295 and the New Jersey Turnpike
 - Within many numerous amenities including the Moorestown Mall, East Gate Square, Retail Shopping stores, and office professionals
 - Neighboring to many residential communities

Contact Us

Ryan Barikian
Vice President
856.857.6307
ryan.barikian@wolfcre.com

Sean Kelly
Associate
215 799 6146
sean.kelly@wolfcre.com

Jason Wolf
Managing Principal
856.857.6301
jason.wolf@wolfcre.com



follow us:    

The foregoing information was furnished to us by sources which we deem to be reliable, but no warranty or representation is made as to the accuracy thereof. Subject to correction of errors, omissions, change of price, prior sale or withdrawal from market without notice.

ADDITIONAL PHOTOS



The foregoing information was furnished to us by sources which we deem to be reliable, but no warranty or representation is made as to the accuracy thereof. Subject to correction of errors, omissions, change of price, prior sale or withdrawal from market without notice.

ADDITIONAL PHOTOS



The foregoing information was furnished to us by sources which we deem to be reliable, but no warranty or representation is made as to the accuracy thereof. Subject to correction of errors, omissions, change of price, prior sale or withdrawal from market without notice.

ADDITIONAL PHOTOS



The foregoing information was furnished to us by sources which we deem to be reliable, but no warranty or representation is made as to the accuracy thereof. Subject to correction of errors, omissions, change of price, prior sale or withdrawal from market without notice.

ADDITIONAL PHOTOS



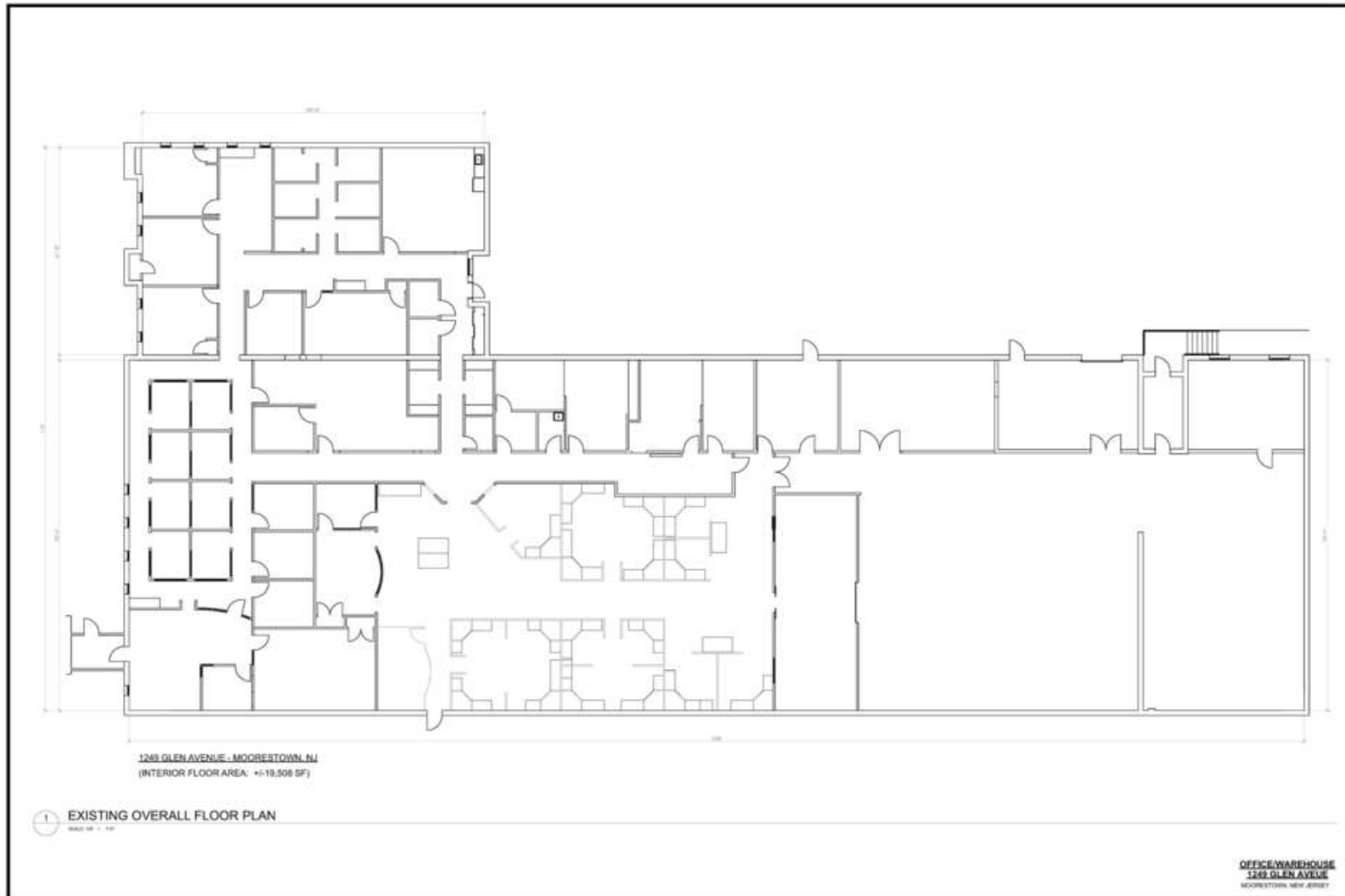
The foregoing information was furnished to us by sources which we deem to be reliable, but no warranty or representation is made as to the accuracy thereof. Subject to correction of errors, omissions, change of price, prior sale or withdrawal from market without notice.

ADDITIONAL PHOTOS



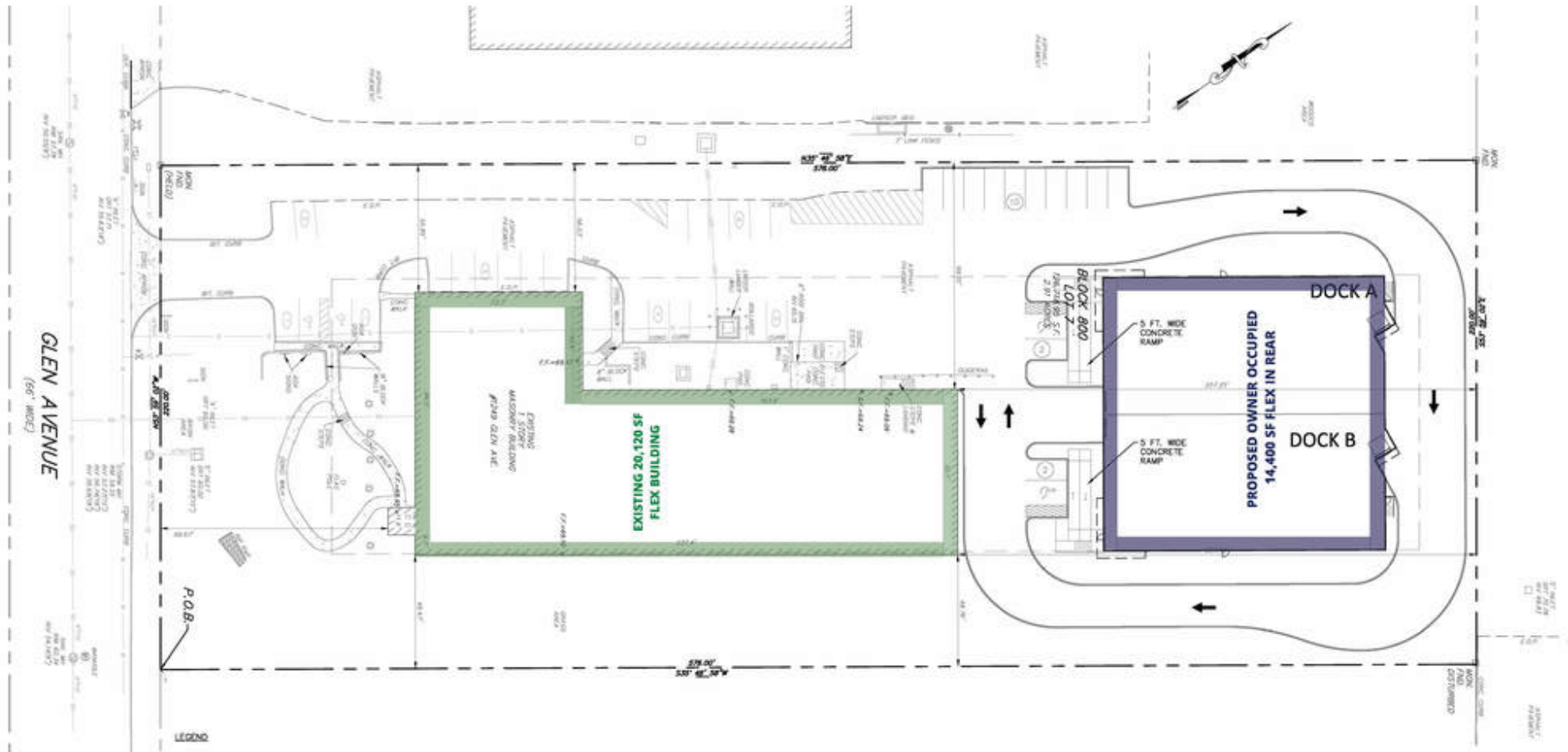
The foregoing information was furnished to us by sources which we deem to be reliable, but no warranty or representation is made as to the accuracy thereof. Subject to correction of errors, omissions, change of price, prior sale or withdrawal from market without notice.

FLOOR PLAN



The foregoing information was furnished to us by sources which we deem to be reliable, but no warranty or representation is made as to the accuracy thereof. Subject to correction of errors, omissions, change of price, prior sale or withdrawal from market without notice.

SITE PLAN



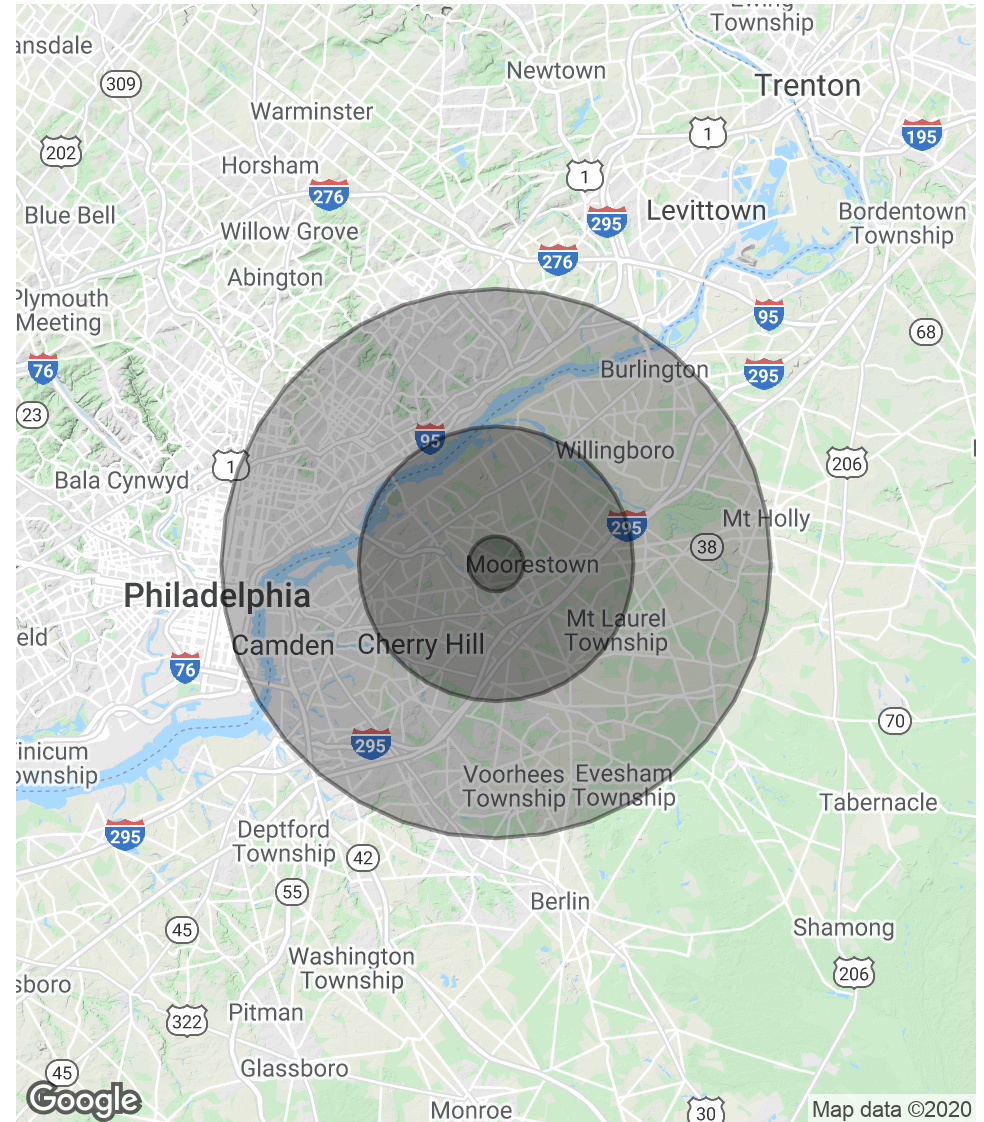
The foregoing information was furnished to us by sources which we deem to be reliable, but no warranty or representation is made as to the accuracy thereof. Subject to correction of errors, omissions, change of price, prior sale or withdrawal from market without notice.

DEMOGRAPHICS MAP & REPORT

POPULATION	1 MILE	5 MILES	10 MILES
Total Population	4,633	193,916	1,254,764
Average age	43.5	41.3	37.5
Average age (Male)	41.7	39.9	35.9
Average age (Female)	44.8	42.4	39.2

HOUSEHOLDS & INCOME	1 MILE	5 MILES	10 MILES
Total households	1,773	72,860	462,982
# of persons per HH	2.6	2.7	2.7
Average HH income	\$119,955	\$95,053	\$71,767
Average house value	\$407,174	\$295,560	\$240,887

* Demographic data derived from 2010 US Census



The foregoing information was furnished to us by sources which we deem to be reliable, but no warranty or representation is made as to the accuracy thereof. Subject to correction of errors, omissions, change of price, prior sale or withdrawal from market without notice.