



422 WEST BROAD STREET | GIBBSTOWN, NJ

PROPERTY DESCRIPTION

Location 422 West Broad Street
Gibbstown, NJ 08027

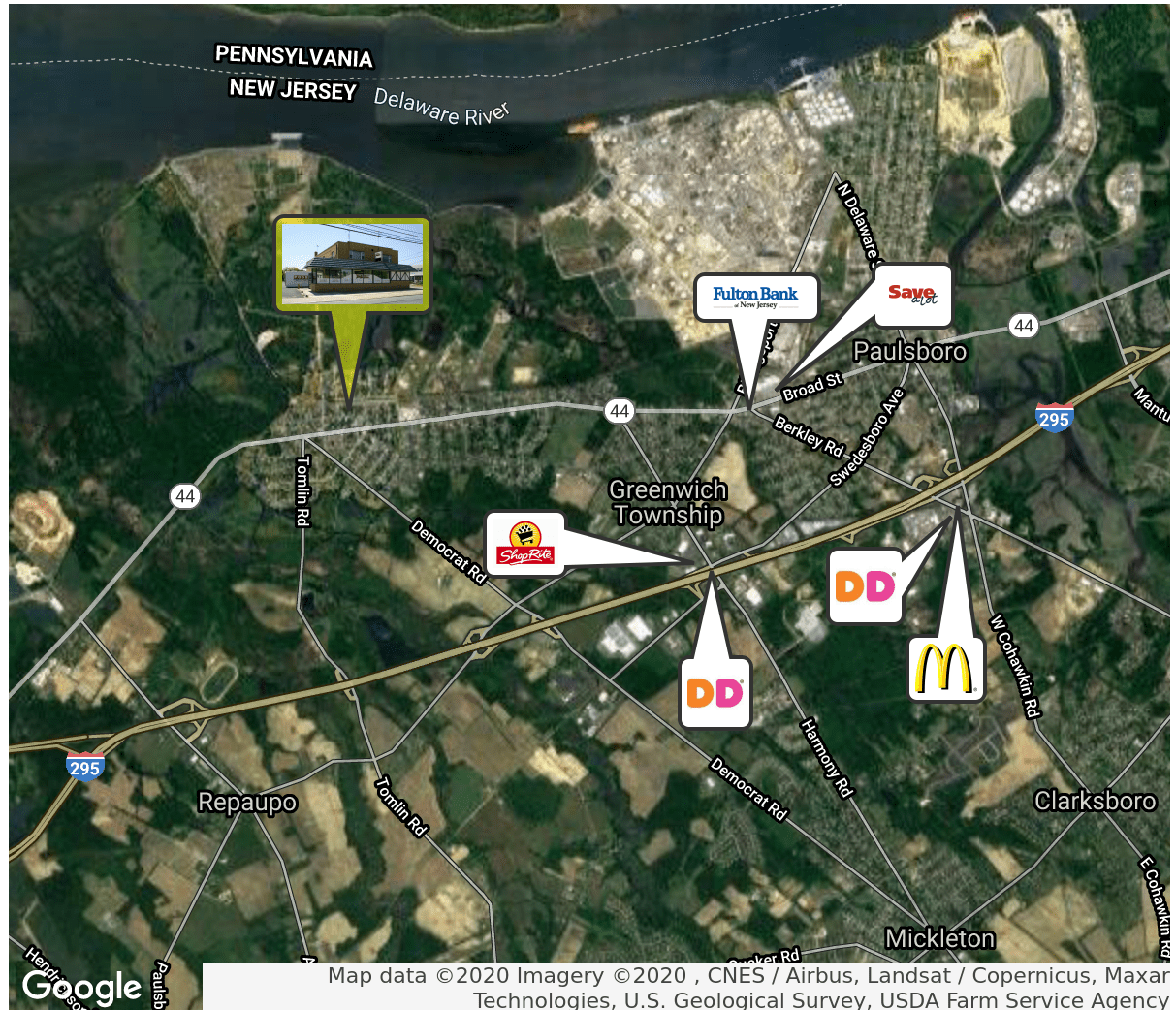
Size / SF Available 18,748 SF

Sale Price \$350,000

- Property / Area Description**
- Unique Building in the heart of Gibbstown, NJ
 - Retail Storefront/Light Industrial Area 1st & 2nd Floor
 - 2 private Apartments Upstairs
 - Elevator serviced to 2nd floor
 - One drive in 10x10' electric door
 - 3 Phase electric, 200 Amps/220 Volts
 - Ceiling height varies from 11-18'
 - Parking for 18 +/- vehicles
 - Second floor contains newer storage area, approximately 4,000 SF with 18' ceilings
 - Basement approximately 2,400 SF with conveyor belt
 - Close proximity to Route I-295

Contact Us

Ryan Barikian	Michael Scanzano
Vice President	Associate
856.857.6307	857.856.6386
ryan.barikian@wolfcre.com	mike.scanzano@wolfcre.com



follow us:    

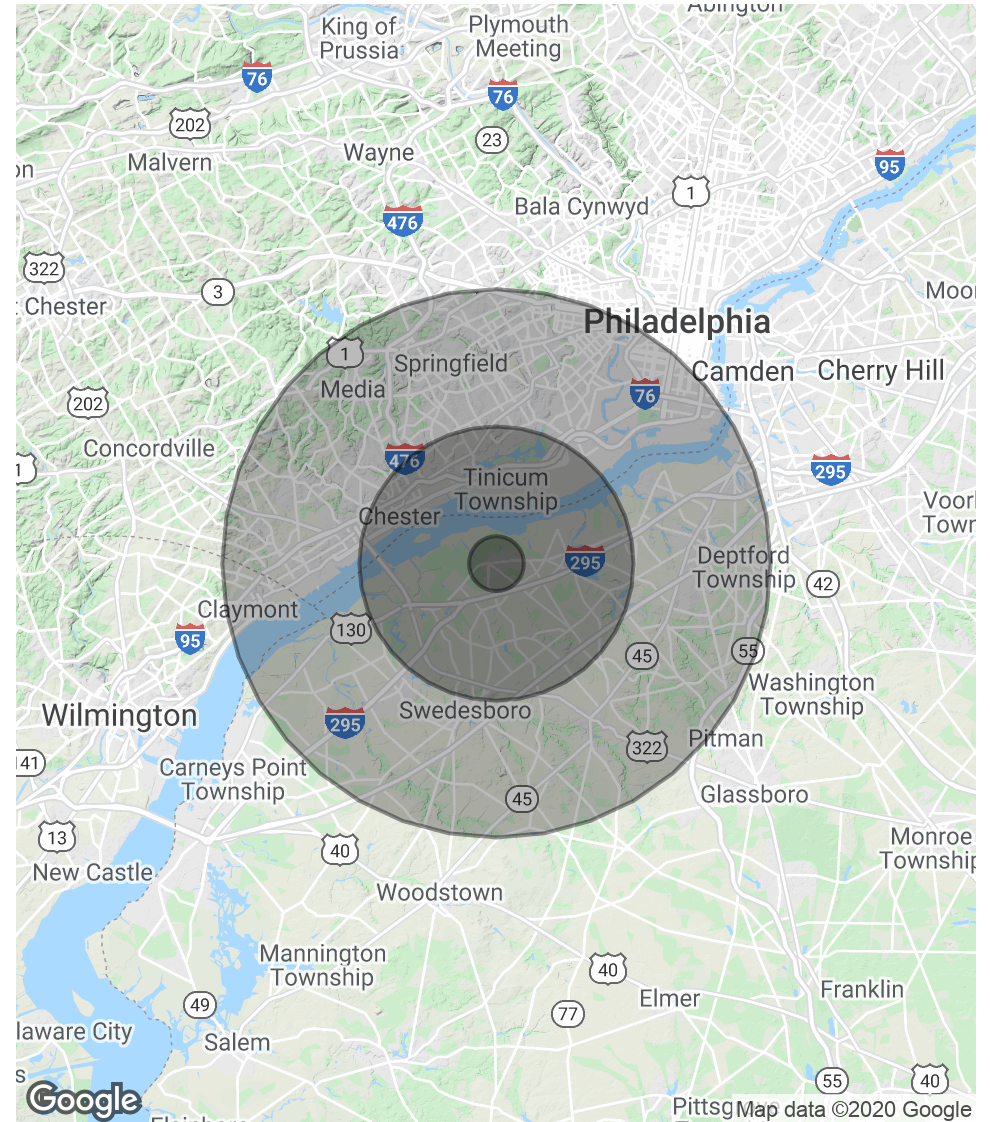
The foregoing information was furnished to us by sources which we deem to be reliable, but no warranty or representation is made as to the accuracy thereof. Subject to correction of errors, omissions, change of price, prior sale or withdrawal from market without notice.

DEMOGRAPHICS MAP & REPORT

POPULATION	1 MILE	5 MILES	10 MILES
Total Population	1,289	87,573	779,848
Average age	39.7	37.4	36.2
Average age (Male)	39.5	35.5	34.2
Average age (Female)	40.3	38.9	37.8

HOUSEHOLDS & INCOME	1 MILE	5 MILES	10 MILES
Total households	474	32,631	290,008
# of persons per HH	2.7	2.7	2.7
Average HH income	\$81,649	\$71,592	\$66,343
Average house value		\$220,288	\$233,206

* Demographic data derived from 2010 US Census



The foregoing information was furnished to us by sources which we deem to be reliable, but no warranty or representation is made as to the accuracy thereof. Subject to correction of errors, omissions, change of price, prior sale or withdrawal from market without notice.