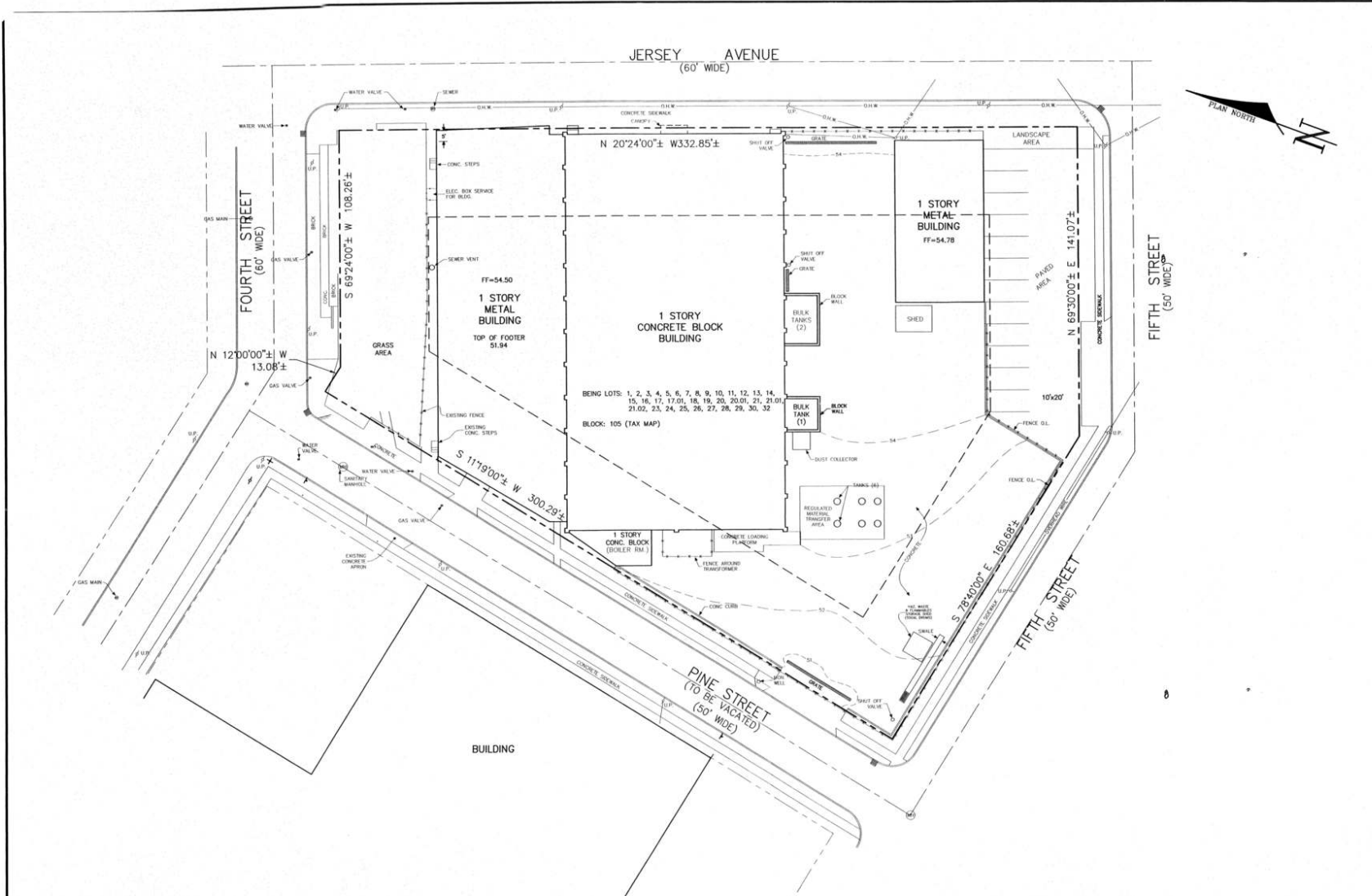


SITE PLAN



<p>EXISTING CONDITIONS PLAN FOR PRC DESOTO INTERNATIONAL</p> <p>BLOCK: 105</p> <p>CITY OF GLAUCESTER COUNTY OF CAMDEN, STATE OF NEW JERSEY</p> <p>CLIENT: PRC DESOTO INTERNATIONAL DATE: 02/21/24 DRAWN: JAC JOB#: C-28301 SCALE: 1"=20'</p> <p>CHECKED: JAC SHEET: 1 OF 1</p>	<p>CLANCY & ASSOCIATES, INC. CONSULTING ENGINEERS Engineers • Land Surveyors • Planners</p> <p>601 Asbury Avenue National Park, NJ 08063 Phone: (856) 853-7306 Fax: (856) 853-7381 CERTIFICATE OF AUTHORIZATION NO. 2402743300</p>
	<p>DIANE F. MARTIN Professional Land Surveyor Professional Planner</p> <p>DATE: _____ NJ LIC. # 23511 PA LIC. # 14000</p>
<p>JAMES A. CLANCY Professional Engineer & Land Surveyor Professional Engineer Professional Engineer Professional Land Surveyor</p> <p>DATE: _____ NJ LIC. # 23088 PA LIC. # 12128 NJ LIC. # 23128 PA LIC. # 12127</p>	<p>JOSEPH J. SCHIAVO DWIGHT J. WEIR Professional Engineer Professional Engineer</p> <p>DATE: _____ NJ LIC. # 20130 PA LIC. # 13448</p>

The foregoing information was furnished to us by sources which we deem to be reliable, but no warranty or representation is made as to the accuracy thereof. Subject to correction of errors, omissions, change of price, prior sale or withdrawal from market without notice.