



+/- 32,000 SF INDUSTRIAL PROPERTY AVAILABLE FOR SALE



410 JERSEY CITY | GLOUCESTER CITY, NJ



Wolf Commercial Real Estate
www.WolfCRE.com



PROPERTY DESCRIPTION

- Location** 410 Jersey Avenue
Gloucester City, NJ 08030
- Size / SF Available** +/- 32,000 SF
- Sale Price** \$1,100,000
- Property / Area Description**
- Currently operating as a commercial laundry facility
 - Ceiling heights from 11'-24'2" Loading dock height doors
 - +/- Approximately 4,000 SF office
 - Completely fenced perimeter
 - Large parking lot for delivery trucks
 - Close to Gloucester City/Camden ports
 - Close proximity to Walt Whitman/Ben Franklin Bridges to PA
 - Close proximity to major highways including Routes 676/42, 130 and 95
 - Equipment includes multiple industrial washers/dryers/presses/etc.
 - New tankless, high capacity hot water system
 - 24' rack system in main warehouse

Contact Us

Ryan Barikian
Vice President
856.857.6307
ryan.barikian@wolfcre.com

Phil Costa
Senior Advisor
609.680.4942
phil.costa@wolfcre.com



follow us:    

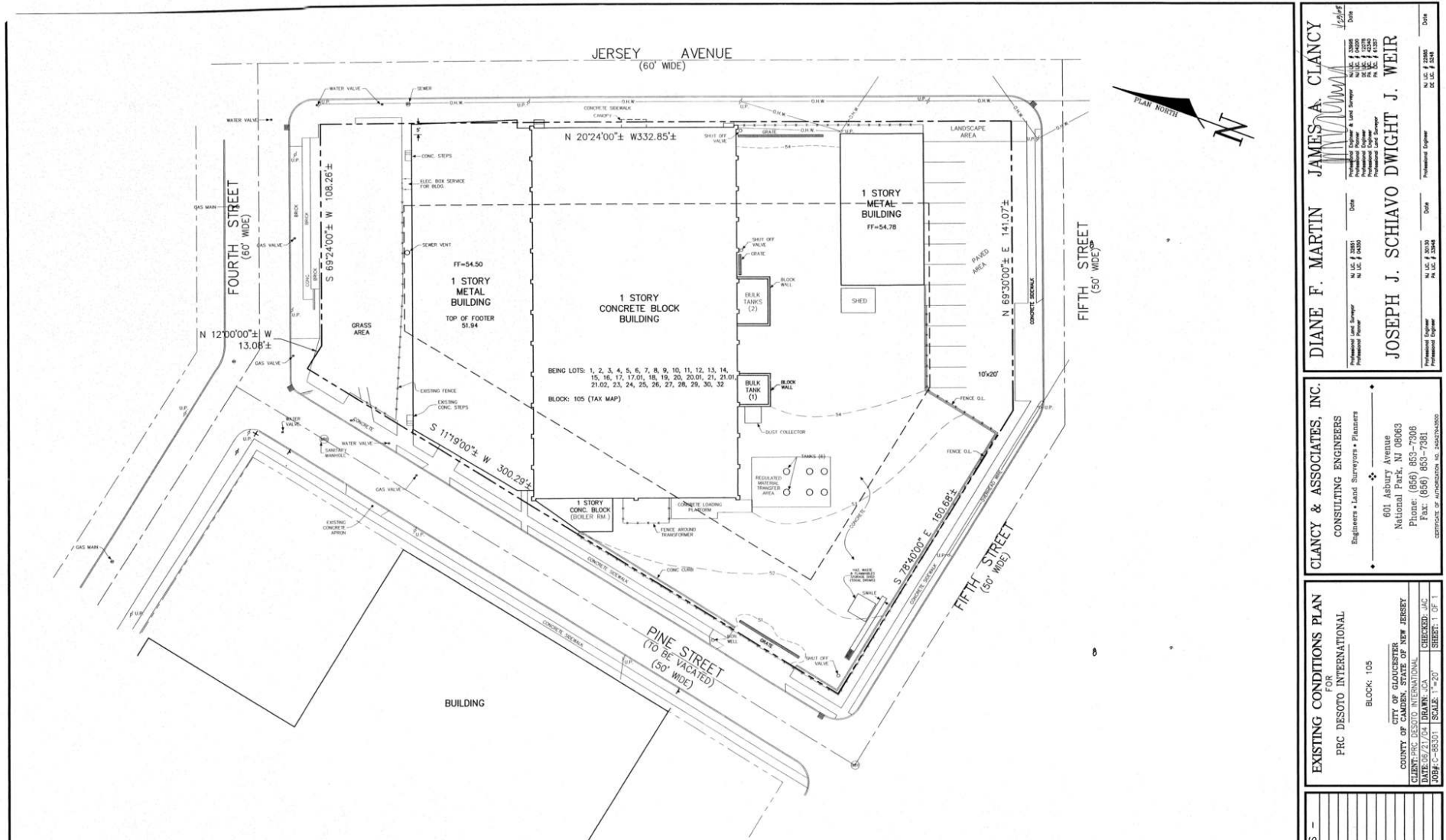
The foregoing information was furnished to us by sources which we deem to be reliable, but no warranty or representation is made as to the accuracy thereof. Subject to correction of errors, omissions, change of price, prior sale or withdrawal from market without notice.

ADDITIONAL PHOTOS



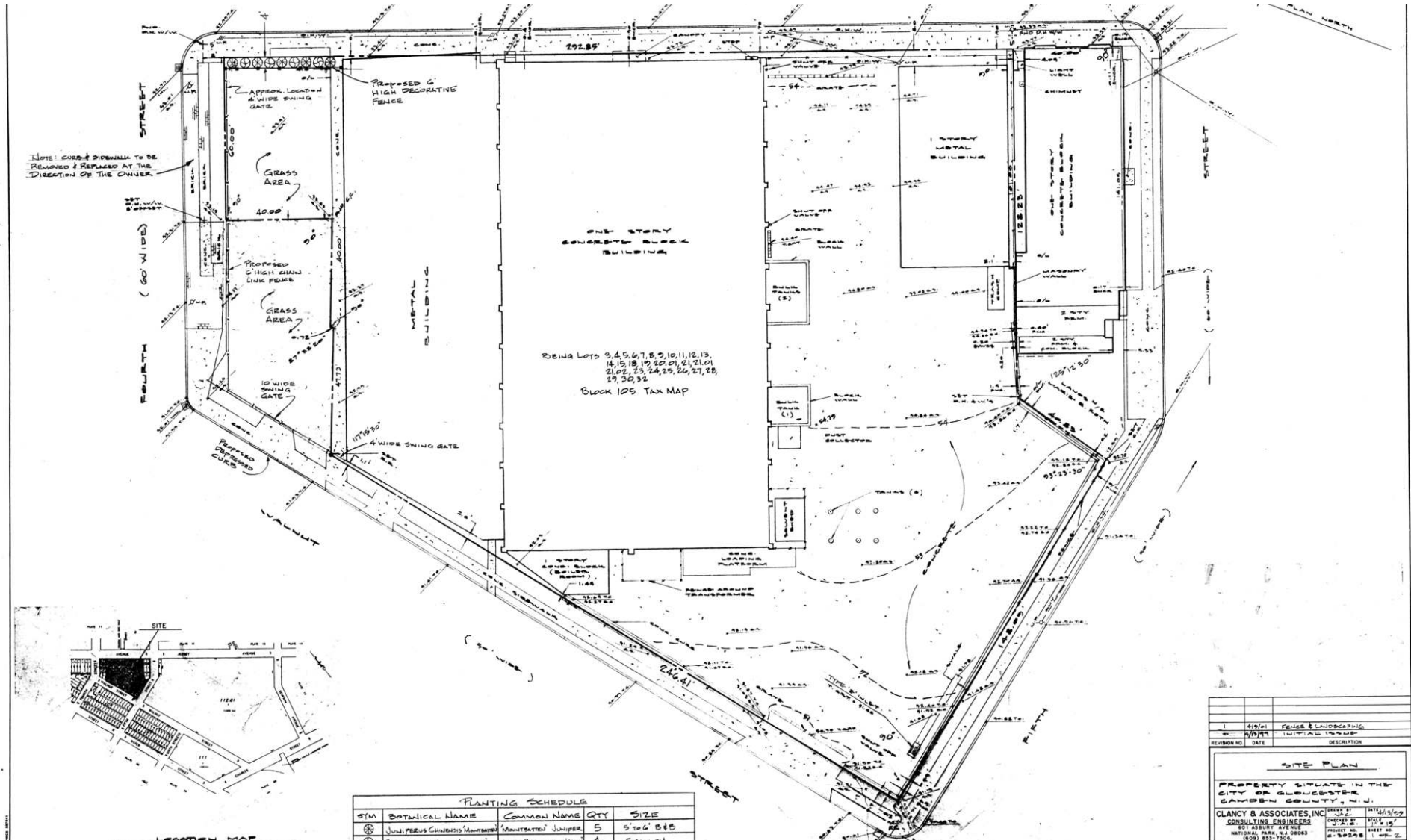
The foregoing information was furnished to us by sources which we deem to be reliable, but no warranty or representation is made as to the accuracy thereof. Subject to correction of errors, omissions, change of price, prior sale or withdrawal from market without notice.

SITE PLAN



The foregoing information was furnished to us by sources which we deem to be reliable, but no warranty or representation is made as to the accuracy thereof. Subject to correction of errors, omissions, change of price, prior sale or withdrawal from market without notice.

SITE PLAN



The foregoing information was furnished to us by sources which we deem to be reliable, but no warranty or representation is made as to the accuracy thereof. Subject to correction of errors, omissions, change of price, prior sale or withdrawal from market without notice.