



240 TAUTON LAKE ROAD | MARLTON, NJ

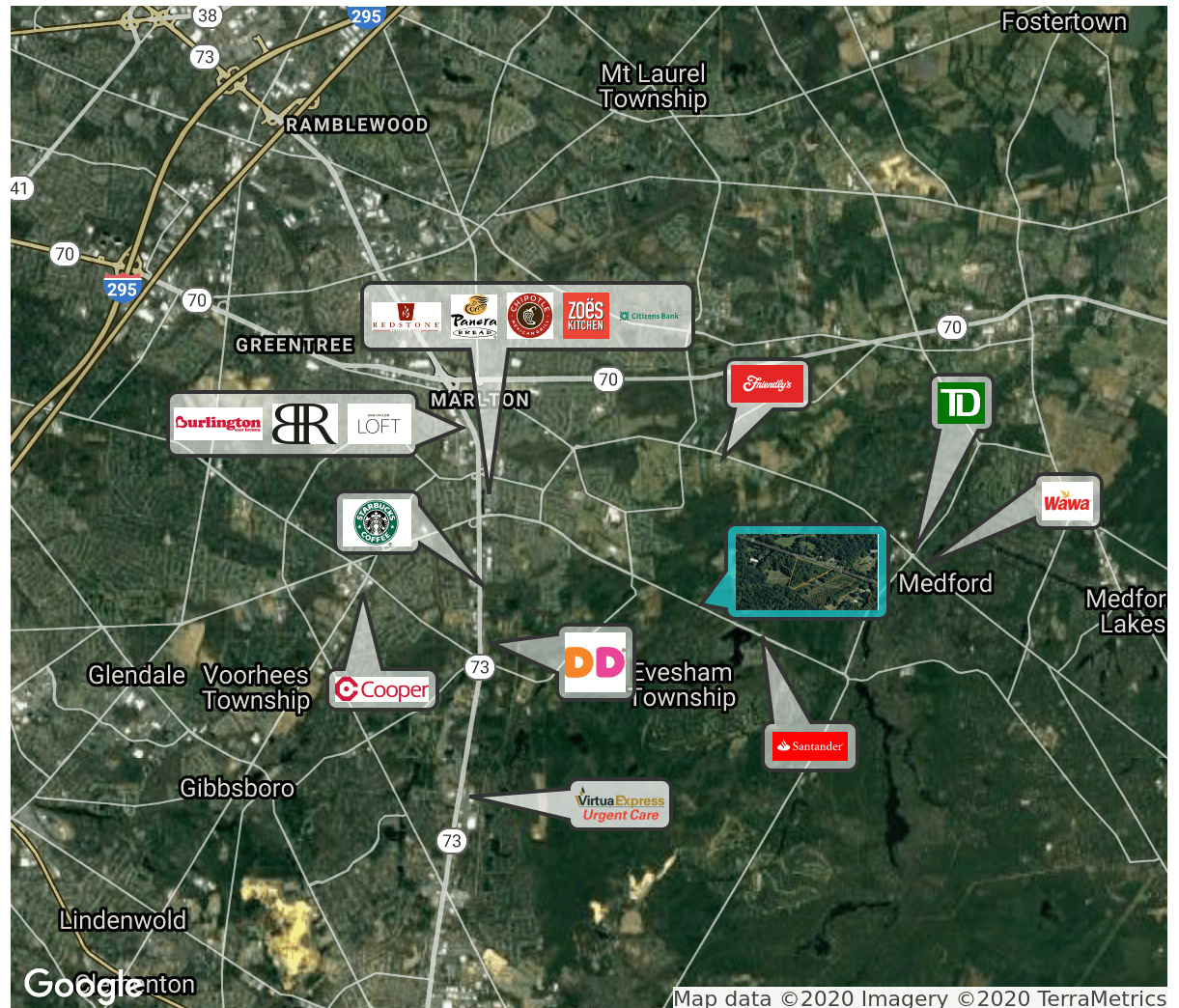
PROPERTY DESCRIPTION

Location	240 Taunton Lake Road Marlton, NJ 08053
Acres Available	1.6 Acres
Sale Price	\$199,000
Signage	Excellent signage opportunity
Property / Area Description	<ul style="list-style-type: none"> • Zoned Rural Development • Development opportunity • Well located site in Marlton, NJ just off of NJ-Route 73 • Located in Evesham Township. Recently voted SJ's top community • Excellent signage opportunity • Close proximity to multiple retail shops, restaurants, professional businesses and residential developments • Located in densely populated are • Highly trafficked road • Located near Medford, NJ

Contact Us

Michael Scanzano
Associate
857.856.6386
mike.scanzano@wolfcre.com

Luke Majewski
Associate
856.857.6303
luke.majewski@wolfcre.com

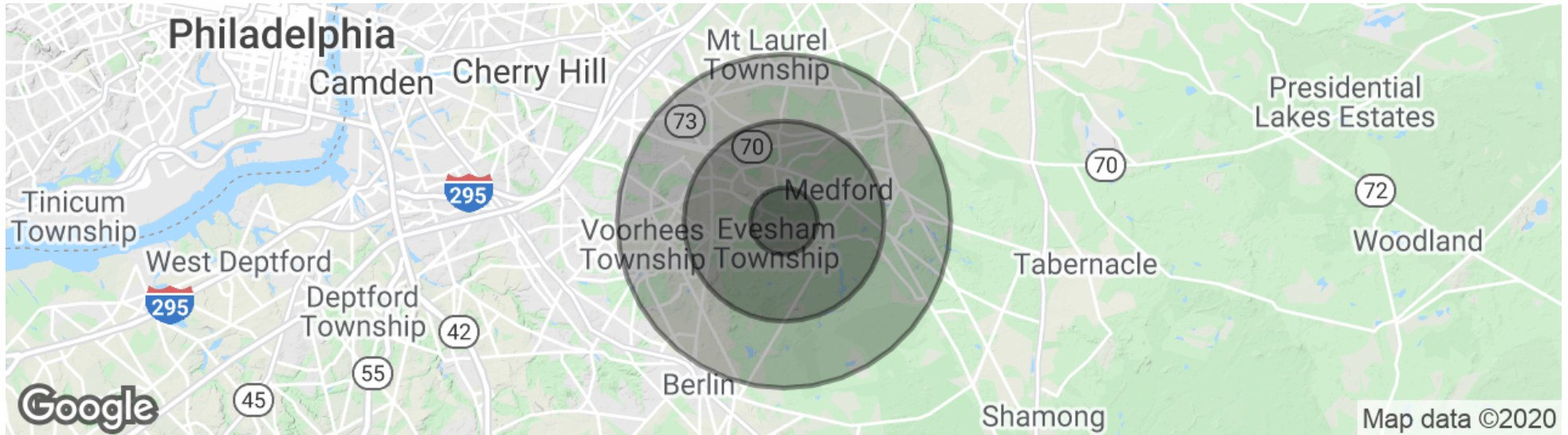


Map data ©2020 Imagery ©2020 TerraMetrics

follow us:    

The foregoing information was furnished to us by sources which we deem to be reliable, but no warranty or representation is made as to the accuracy thereof. Subject to correction of errors, omissions, change of price, prior sale or withdrawal from market without notice.

DEMOGRAPHICS MAP & REPORT



POPULATION	1 MILE	3 MILES	5 MILES
Total Population	4,535	36,584	109,422
Average age	38.8	39.7	41.0
Average age (Male)	37.6	38.5	39.7
Average age (Female)	39.8	41.3	42.3

HOUSEHOLDS & INCOME	1 MILE	3 MILES	5 MILES
Total households	1,971	13,973	40,018
# of persons per HH	2.3	2.6	2.7
Average HH income	\$97,033	\$105,239	\$114,882
Average house value		\$369,957	\$385,347

* Demographic data derived from 2010 US Census

The foregoing information was furnished to us by sources which we deem to be reliable, but no warranty or representation is made as to the accuracy thereof. Subject to correction of errors, omissions, change of price, prior sale or withdrawal from market without notice.