

# PREMIER CLASS "A" MARLTON OFFICE SPACE AVAILABLE



## 1 HOLTEC DRIVE MARLTON, NJ 08053



**Jason Wolf**  
Managing Director  
856 857 6300  
jason.wolf@wolfcre.com

**Bethany Brown**  
Vice President  
267.226.6602  
bethany.brown@wolfcre.com

The foregoing information was furnished to us by sources which we deem to be reliable, but no warranty or representation is made as to the accuracy thereof. Subject to correction of errors, omissions, change of price, prior sale or withdrawal from market without notice.



**Wolf Commercial Real Estate**  
**www.WolfCRE.com**



## PROPERTY DESCRIPTION

**Location:** 1 Holtec Drive  
Marlton, NJ 08053

**Size/SF Available:** Suite 101: +/-2,001 SF  
Suite 202: +/- 2,674 SF

**Lease Price:** Call for information

**Signage:** Directory & suite

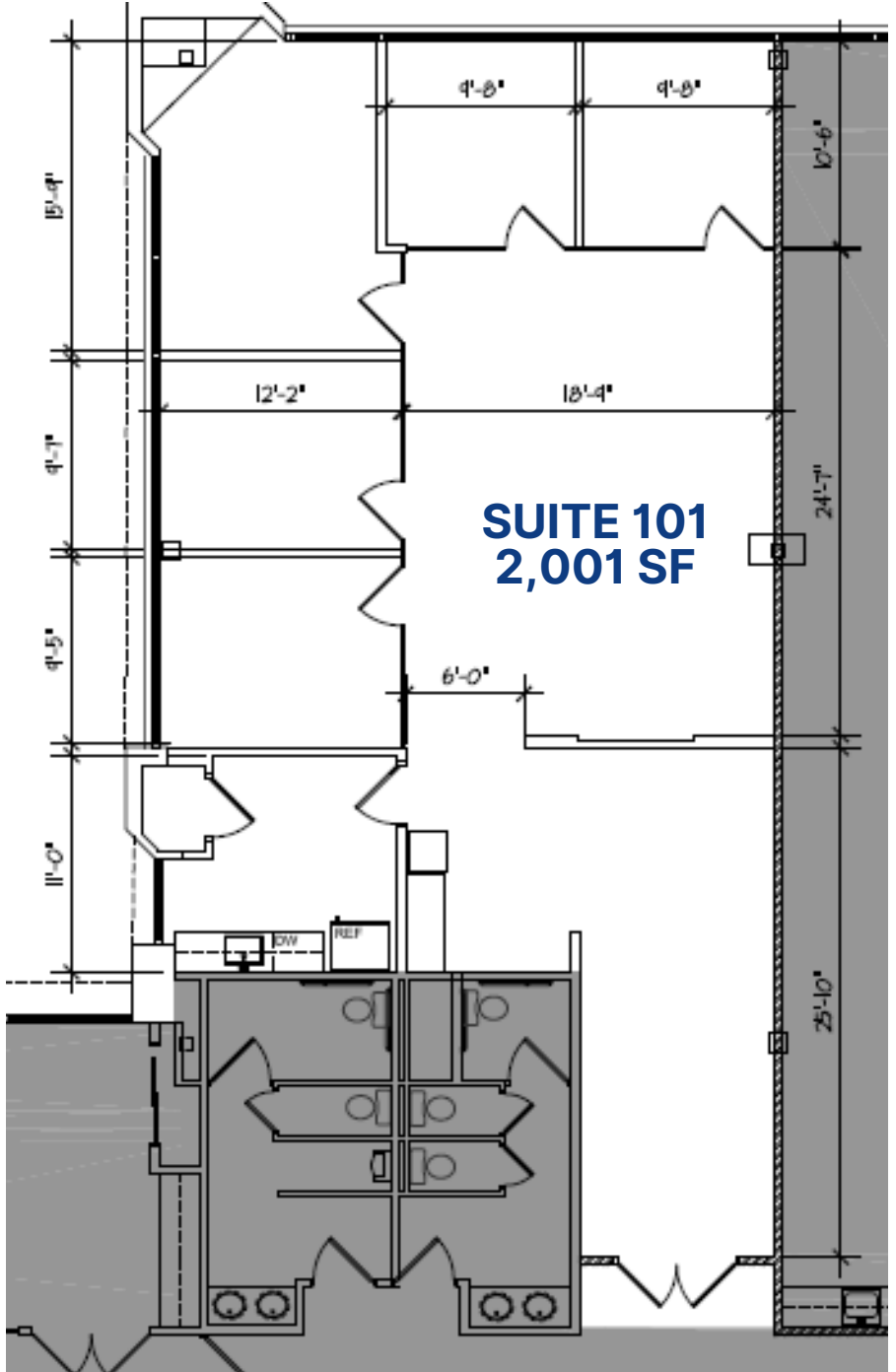
## PROPERTY AREA/HIGHLIGHTS

- Class "A" corporate office building situated in a premier office park setting location
- Surrounded by amenities, scenic water views, two-mile walking trails, ample parking, solar power, LED lighting and an outdoor patio overlooking the pond with seating area
- Electric charging stations available
- Strategically located in the heart of the Marlton Business District
- Directly off Route 73 North minutes from I-295, New Jersey Turnpike and Route 70
- On-Site Property Management
- Conveniently situated within minutes of numerous restaurants, retail and hotels
- Impressive recently renovated interiors
- Join National Integrity Title Agency, Console & Associates, P.C., Panda Exteriors, Spring Hill Home Care, Ferrara Law Group, Garden State Fiduciary Services, and Claritas Financial Partners



The foregoing information was furnished to us by sources which we deem to be reliable, but no warranty or representation is made as to the accuracy thereof. Subject to correction of errors, omissions, change of price, prior sale or withdrawal from market without notice.

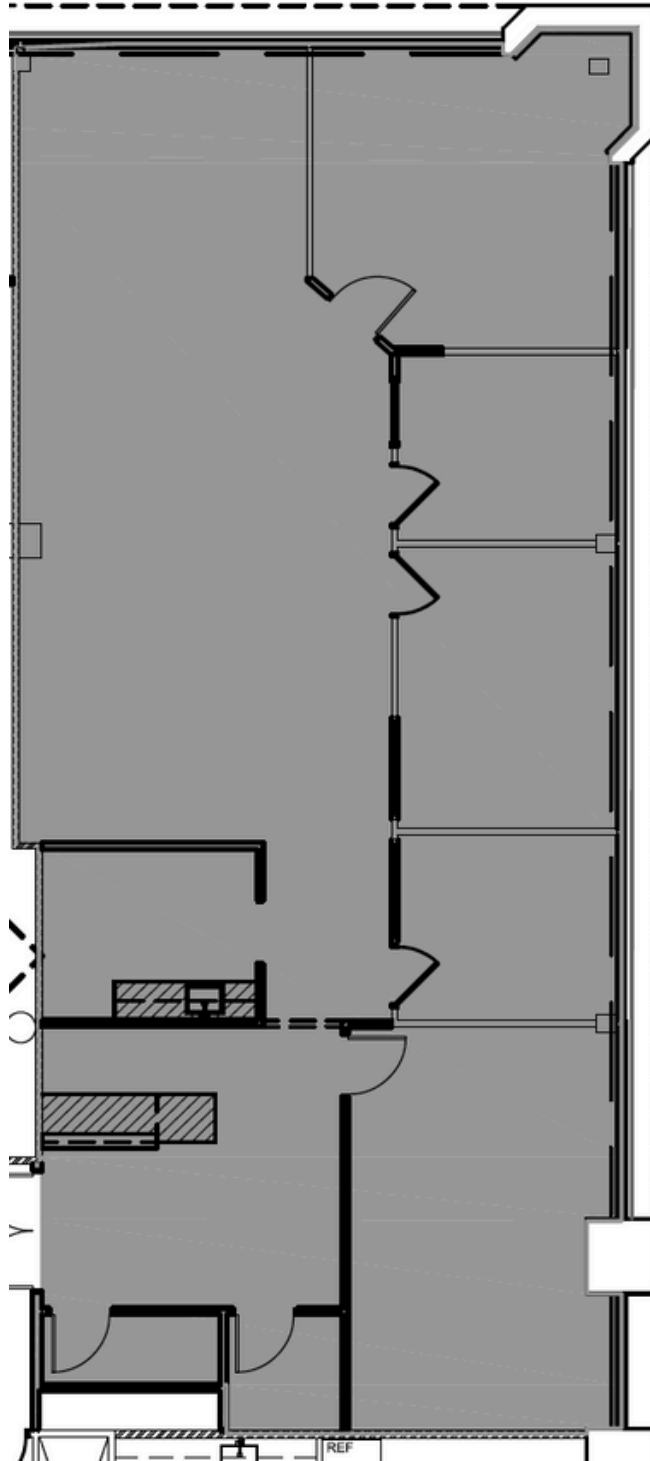
## FLOOR PLAN



The foregoing information was furnished to us by sources which we deem to be reliable, but no warranty or representation is made as to the accuracy thereof. Subject to correction of errors, omissions, change of price, prior sale or withdrawal from market without notice.

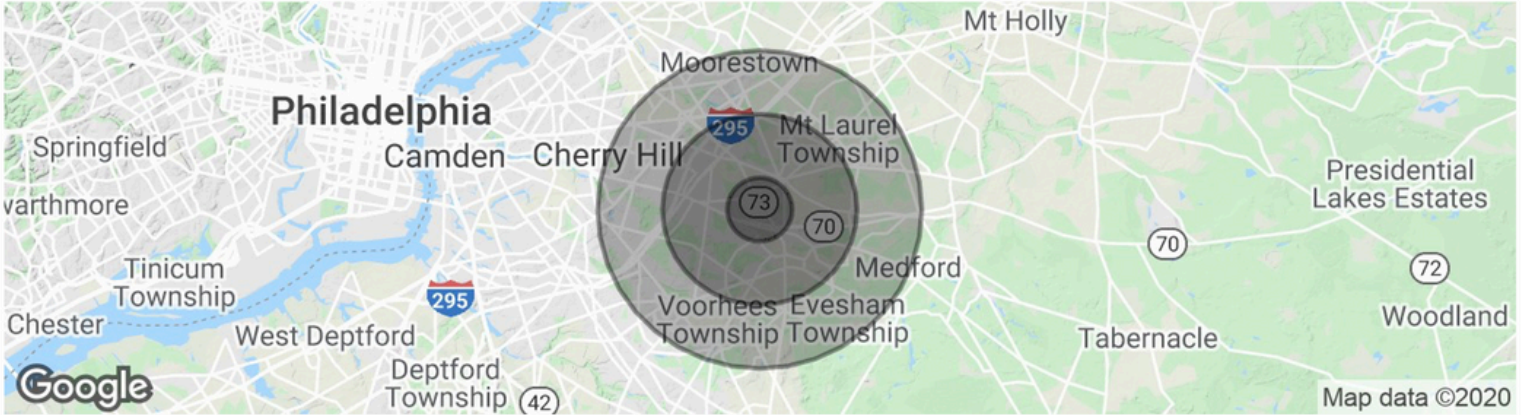
**FLOOR PLAN**

**SUITE 202**  
**2,674 SF**



The foregoing information was furnished to us by sources which we deem to be reliable, but no warranty or representation is made as to the accuracy thereof. Subject to correction of errors, omissions, change of price, prior sale or withdrawal from market without notice.

## PROPERTY DEMOGRAPHICS



POPULATION	1 MILE	3 MILES	5 MILES
Total Population	9,306	74,981	183,677
Average age	39.6	42.0	42.0
Average age (Male)	39.3	40.4	40.4
Average age (Female)	39.9	43.8	43.5

HOUSEHOLDS & INCOME	1 MILE	3 MILES	5 MILES
Total households	3,779	27,513	69,270
# of persons per HH	2.5	2.7	2.7
Average HH income	\$90,507	\$110,169	\$110,071
Average house value	\$290,958	\$325,121	\$360,647

\* Demographic data derived from 2010 US Census



### CONTACT

**Jason Wolf**

Managing Director

856 857 6300

[jason.wolf@wolfcre.com](mailto:jason.wolf@wolfcre.com)

**Bethany Brown**

Vice President

267.226.6602

[bethany.brown@wolfcre.com](mailto:bethany.brown@wolfcre.com)

The foregoing information was furnished to us by sources which we deem to be reliable, but no warranty or representation is made as to the accuracy thereof. Subject to correction of errors, omissions, change of price, prior sale or withdrawal from market without notice.