



HADDON TOWNSHIP RELIGIOUS & MULTIPURPOSE FACILITY/SCHOOL AVAILABLE FOR LEASE OR SALE



25 REEVE AVENUE | WESTMONT, NJ



Wolf Commercial Real Estate
www.WolfCRE.com



PROPERTY DESCRIPTION

Location 25 Reeve Avenue
Westmont, NJ 08108

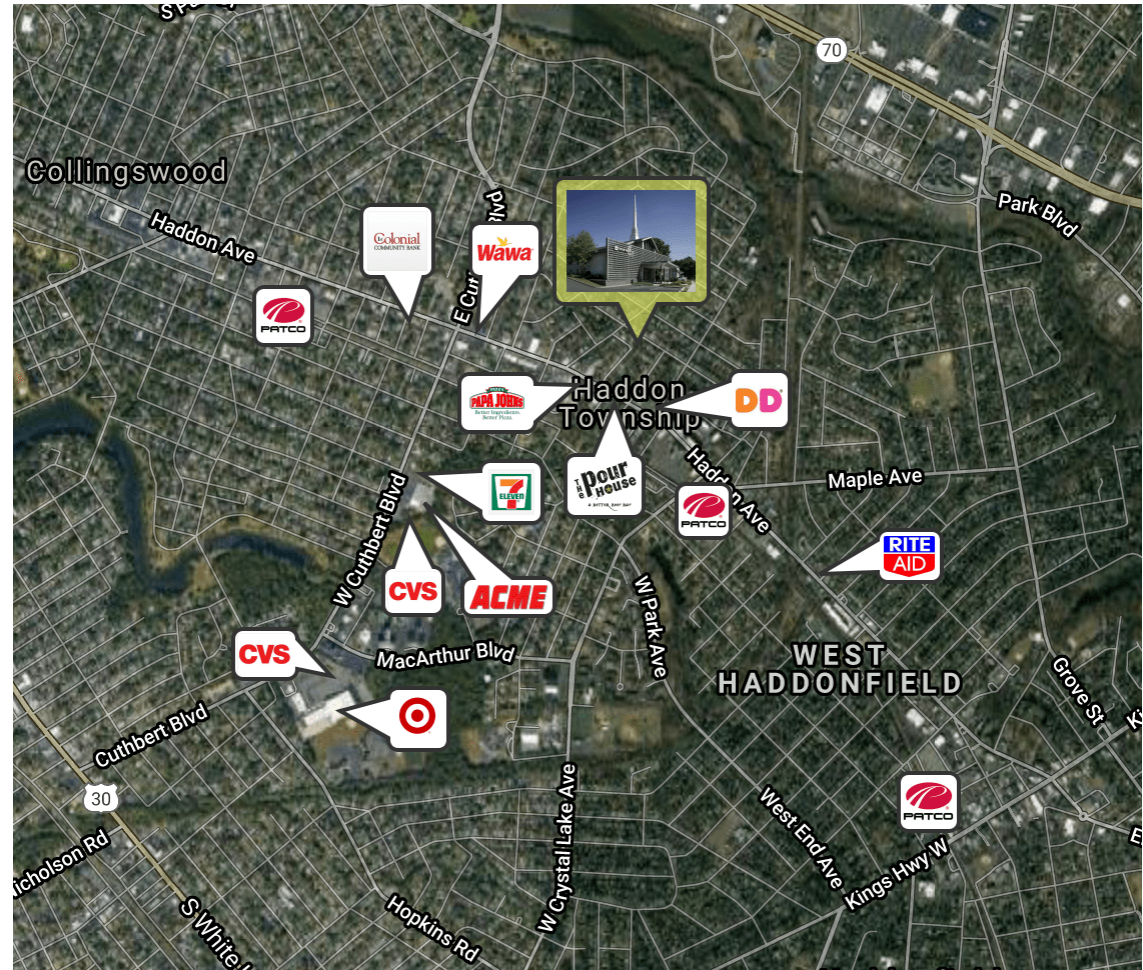
Size / SF Available 12,232 SF

Lease Price \$14.00/SF Gross Plus U & J

Sale Price \$1,200,000

Property / Area Description

- Entire property recently renovated
- New roof, new HVAC systems, new sprinkler system and new flooring throughout
- Congregation main hall seats over 100 people
- Beautiful stained glass window in church/main hall
- Newly designed stage and sound booth in church/main hall
- Newly wired electrical/sound components in church/main hall
- ADA compliant with elevator to second floor
- Security system throughout building for safety of congregants
- Multiple private offices and classrooms
- Outside recreation area for children with soft surface
- Beautifully landscaped exterior with sprinkler system
- Walking distance from Haddon Ave and the Westmont's business district
- Upgraded LED lighting through most of the property
- Ideal for for a religious organization or school



Contact Us

Ryan Barikian
Senior Associate
856.857.6307
ryan.barikian@wolfcre.com

follow us:    

The foregoing information was furnished to us by sources which we deem to be reliable, but no warranty or representation is made as to the accuracy thereof. Subject to correction of errors, omissions, change of price, prior sale or withdrawal from market without notice.

ADDITIONAL PHOTOS



The foregoing information was furnished to us by sources which we deem to be reliable, but no warranty or representation is made as to the accuracy thereof. Subject to correction of errors, omissions, change of price, prior sale or withdrawal from market without notice.

ADDITIONAL PHOTOS



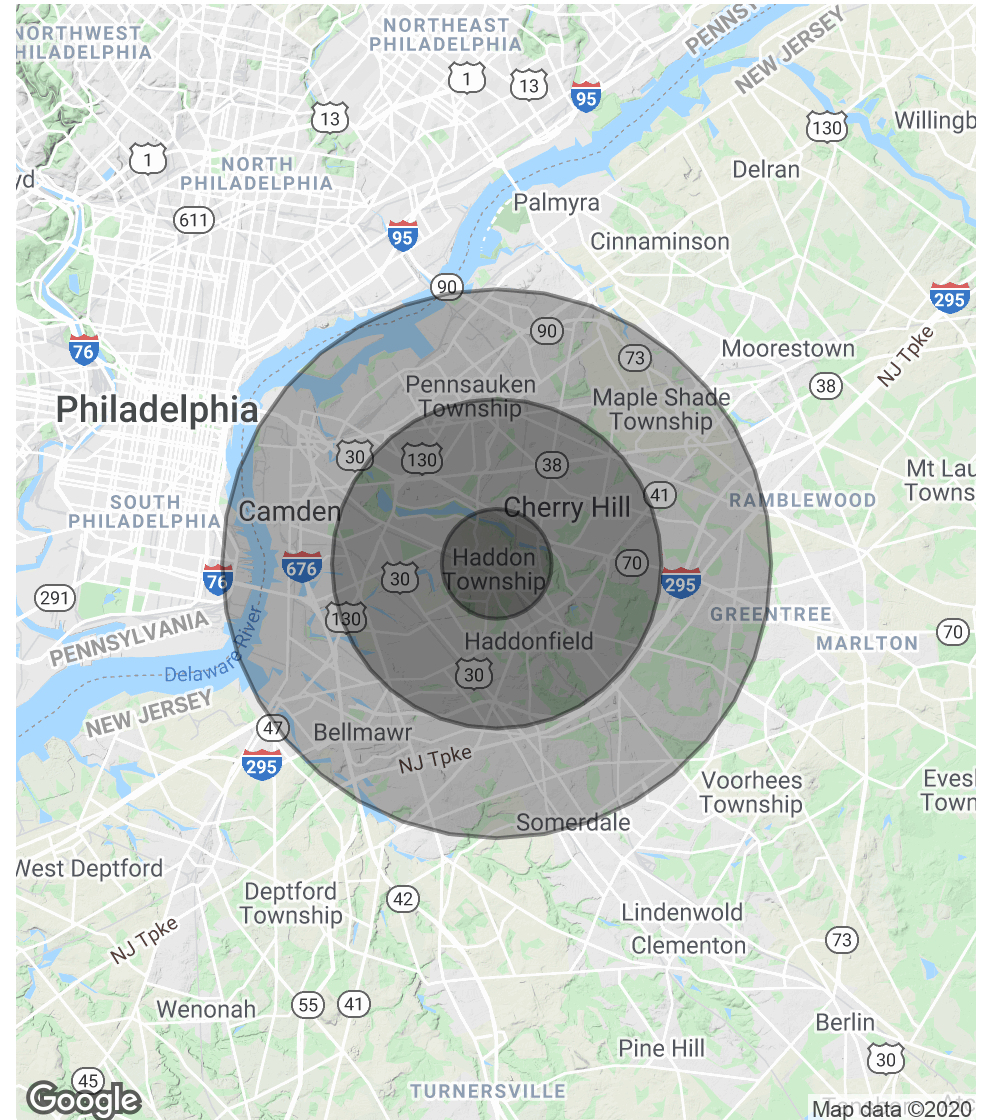
The foregoing information was furnished to us by sources which we deem to be reliable, but no warranty or representation is made as to the accuracy thereof. Subject to correction of errors, omissions, change of price, prior sale or withdrawal from market without notice.

DEMOGRAPHICS MAP & REPORT

POPULATION	1 MILE	3 MILES	5 MILES
Total Population	16,083	128,386	355,265
Average age	41.0	39.8	37.2
Average age (Male)	38.4	37.8	35.6
Average age (Female)	43.2	41.7	38.8

HOUSEHOLDS & INCOME	1 MILE	3 MILES	5 MILES
Total households	6,601	52,006	134,512
# of persons per HH	2.4	2.5	2.6
Average HH income	\$92,706	\$84,658	\$73,077
Average house value	\$304,807	\$269,834	\$248,579

* Demographic data derived from 2010 US Census



The foregoing information was furnished to us by sources which we deem to be reliable, but no warranty or representation is made as to the accuracy thereof. Subject to correction of errors, omissions, change of price, prior sale or withdrawal from market without notice.