



PROFESSIONAL OFFICE SPACE AVAILABLE FOR LEASE



875 KINGS HIGHWAY | WOODBURY, NJ



Wolf Commercial Real Estate  
**[www.WolfCRE.com](http://www.WolfCRE.com)**



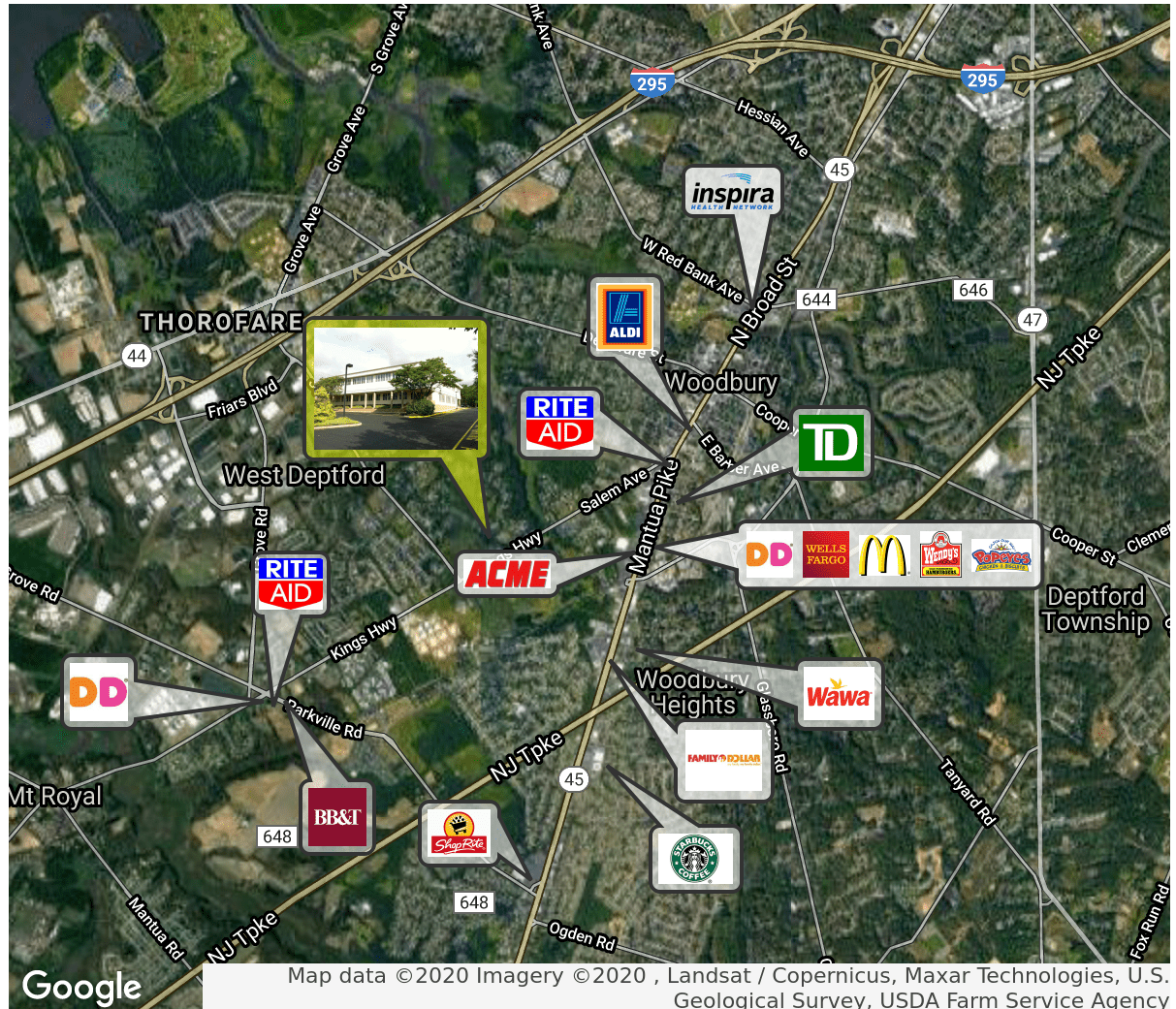


## PROPERTY DESCRIPTION

<b>Location</b>	875 Kings Highway Woodbury, NJ 08096
<b>Size / SF Available</b>	1,500 SF
<b>Lease Price</b>	\$15.00/SF (NNN)
<b>Property / Area Description</b>	<ul style="list-style-type: none"> <li>Professional office suite for lease</li> <li>Excellent on-site parking ration</li> <li>Monument signage available on Kings Highway</li> <li>Easy access to nearby Routes 130 &amp; 295</li> <li>Close proximity to county seat/ courthouse in Woodbury, NJ and Inspira Medical Center</li> <li>Located directly across the street from Westwood Golf Club</li> <li>Available for immediate occupancy</li> <li>Owned &amp; Managed by LEVCO Enterprises, LLC</li> </ul>

## Contact Us

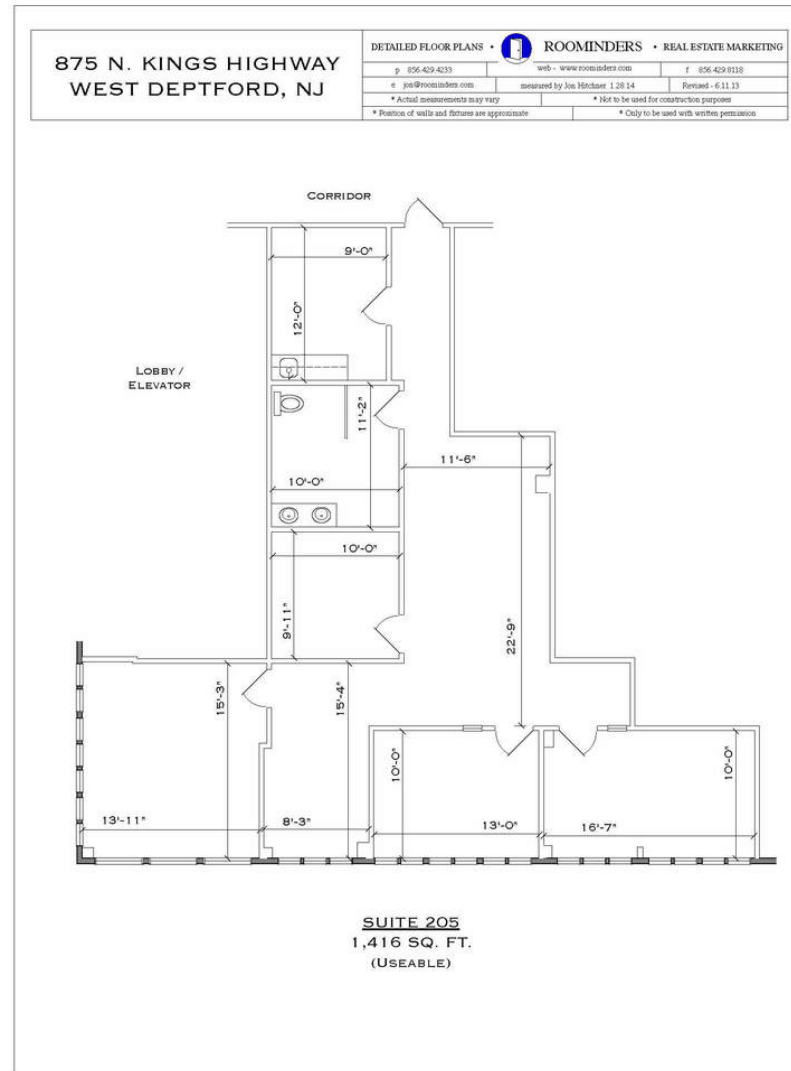
Ryan Barikian  
Senior Associate  
856.857.6307  
ryan.barikian@wolfcre.com



follow us:    

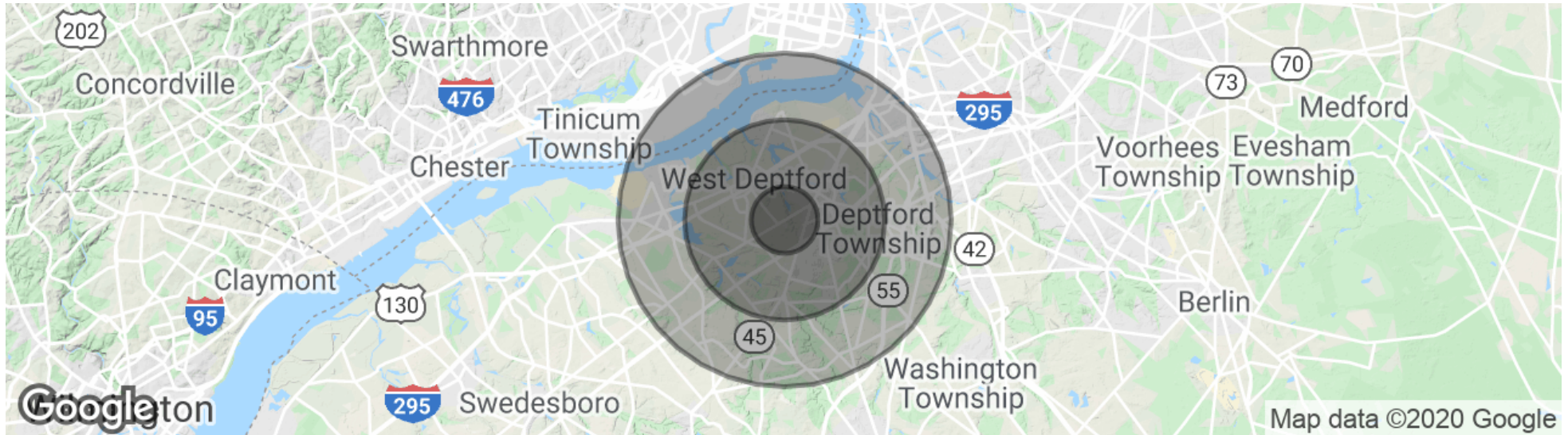
The foregoing information was furnished to us by sources which we deem to be reliable, but no warranty or representation is made as to the accuracy thereof. Subject to correction of errors, omissions, change of price, prior sale or withdrawal from market without notice.

## FLOOR PLANS



The foregoing information was furnished to us by sources which we deem to be reliable, but no warranty or representation is made as to the accuracy thereof. Subject to correction of errors, omissions, change of price, prior sale or withdrawal from market without notice.

## DEMOGRAPHICS MAP & REPORT



### POPULATION

	1 MILE	3 MILES	5 MILES
Total Population	6,259	58,228	117,303
Average age	38.5	39.6	40.2
Average age (Male)	36.9	37.7	38.3
Average age (Female)	39.6	41.5	41.9

### HOUSEHOLDS & INCOME

	1 MILE	3 MILES	5 MILES
Total households	2,496	23,154	46,092
# of persons per HH	2.5	2.5	2.5
Average HH income	\$87,941	\$79,570	\$78,751
Average house value	\$284,421	\$256,457	\$253,215

\* Demographic data derived from 2010 US Census

The foregoing information was furnished to us by sources which we deem to be reliable, but no warranty or representation is made as to the accuracy thereof. Subject to correction of errors, omissions, change of price, prior sale or withdrawal from market without notice.