



PREMIER CENTER CITY SUBLEASE OPPORTUNITY AVAILABLE



2 PENN CENTER | 1500 JOHN F. KENNEDY BLVD | PHILADELPHIA, PA



Wolf Commercial Real Estate
www.WolfCRE.com

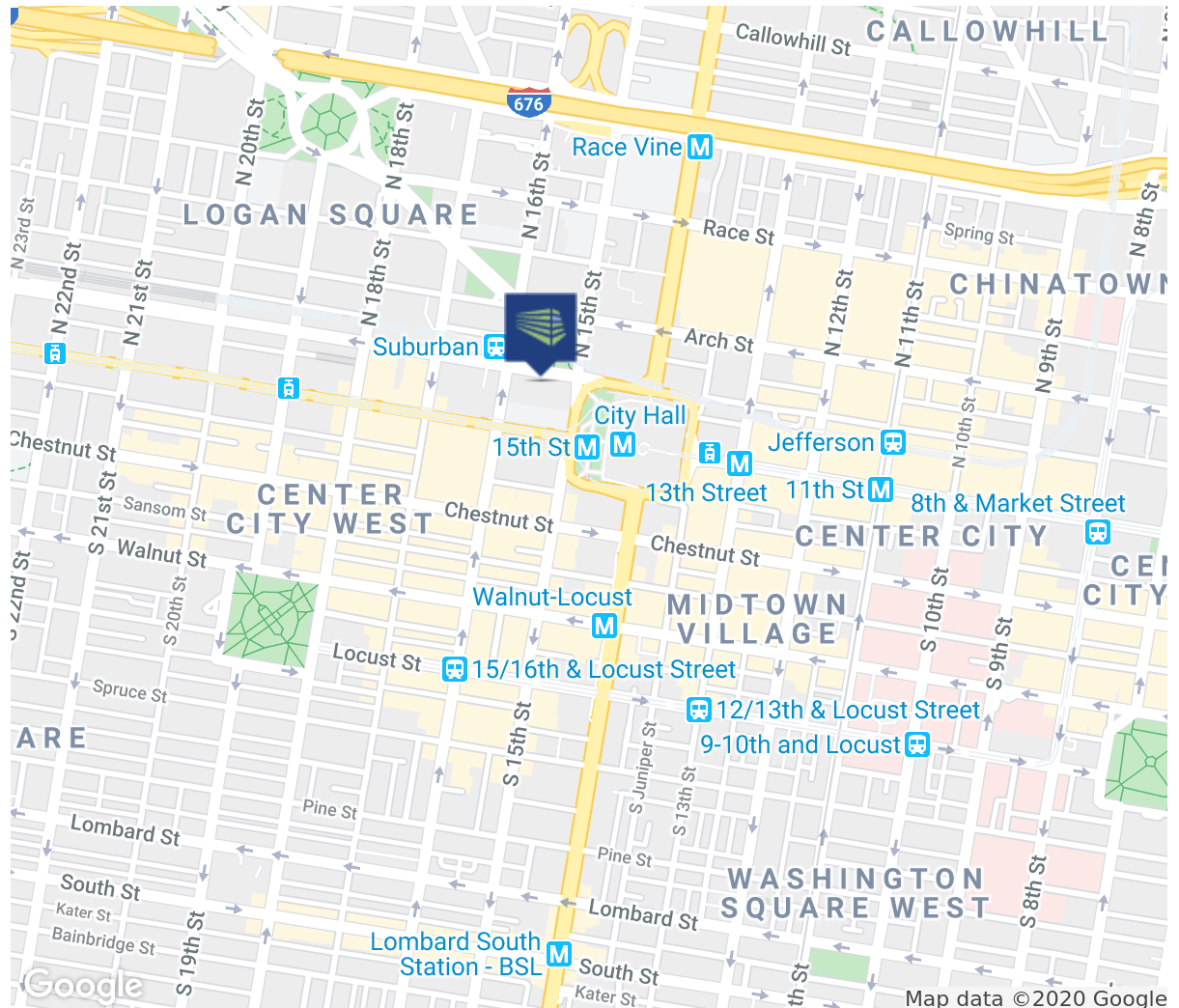


PROPERTY DESCRIPTION

Location	1500 John F. Kennedy Boulevard Philadelphia, PA 19103
Size / SF Available	2,488 SF
Sublease Price	\$28,00/sf Full Service
Occupancy	Lease Term Expires February 27, 2020
Property / Area Description	<ul style="list-style-type: none"> • \$3.00/SF Under Asking Rent! • Located in a 20 Story, Class "A" office building totaling 502,531 SF in desirable Market Street West • Four furnished private offices and large conference room with open common area • Kitchenette in Suite • Office views of newly renovated Love Park and Steps from City Hall • Two Story Glass Atrium Lobby • Upgraded Common Corridors & Restrooms • 24 hour Security

Contact Us

Ty Martin
Associate
215.799.6144
ty.martin@wolfcre.com



follow us:    

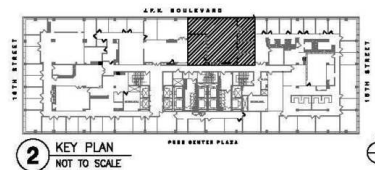
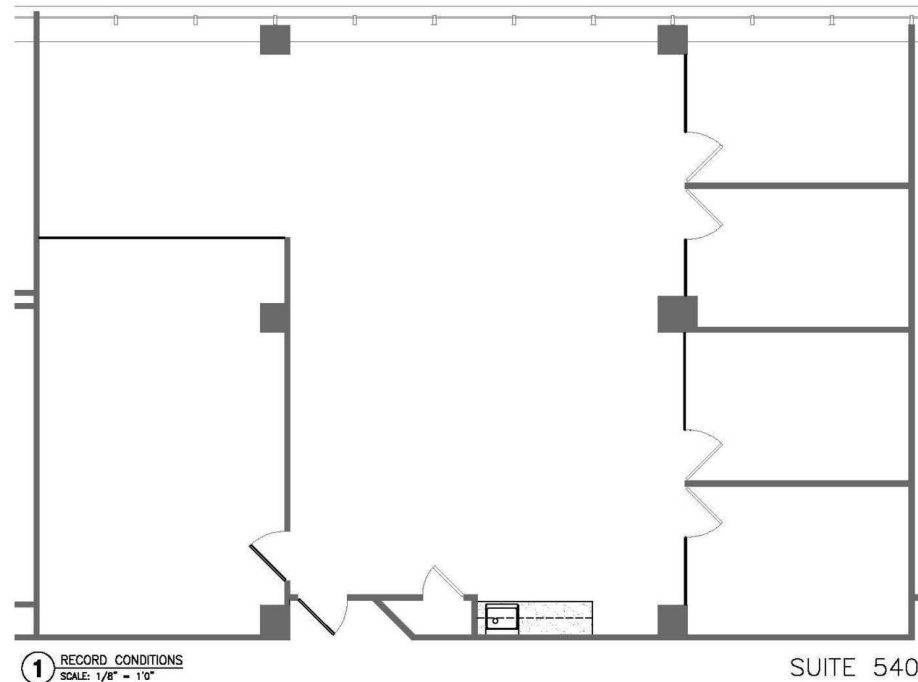
The foregoing information was furnished to us by sources which we deem to be reliable, but no warranty or representation is made as to the accuracy thereof. Subject to correction of errors, omissions, change of price, prior sale or withdrawal from market without notice.

ADDITIONAL PHOTOS



The foregoing information was furnished to us by sources which we deem to be reliable, but no warranty or representation is made as to the accuracy thereof. Subject to correction of errors, omissions, change of price, prior sale or withdrawal from market without notice.

FLOOR PLANS

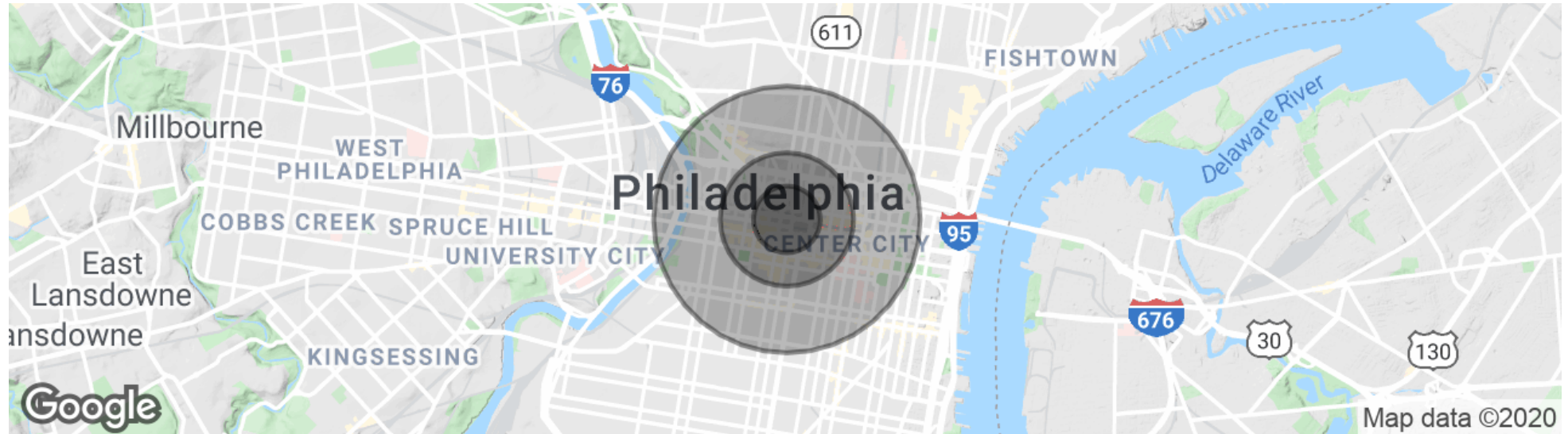


5th FLOOR
Two Penn Center
1500 JFK Boulevard
Philadelphia, PA

sfs
office design llc
1521 Locust Street Suite 800
Philadelphia, PA 19102
T: 215-287-7182
UPDATED 1/23/2019

The foregoing information was furnished to us by sources which we deem to be reliable, but no warranty or representation is made as to the accuracy thereof. Subject to correction of errors, omissions, change of price, prior sale or withdrawal from market without notice.

DEMOGRAPHICS MAP & REPORT



POPULATION	0.25 MILES	0.5 MILES	1 MILE
Total Population	4,568	19,050	73,539
Median age	48.2	38.3	34.4
Median age (Male)	45.7	38.7	35.4
Median age (Female)	49.4	37.3	33.1

HOUSEHOLDS & INCOME	0.25 MILES	0.5 MILES	1 MILE
Total households	2,940	12,086	43,086
# of persons per HH	1.6	1.6	1.7
Average HH income	\$66,618	\$76,020	\$80,557
Average house value	\$218,509	\$284,331	\$395,421

* Demographic data derived from 2010 US Census



The foregoing information was furnished to us by sources which we deem to be reliable, but no warranty or representation is made as to the accuracy thereof. Subject to correction of errors, omissions, change of price, prior sale or withdrawal from market without notice.