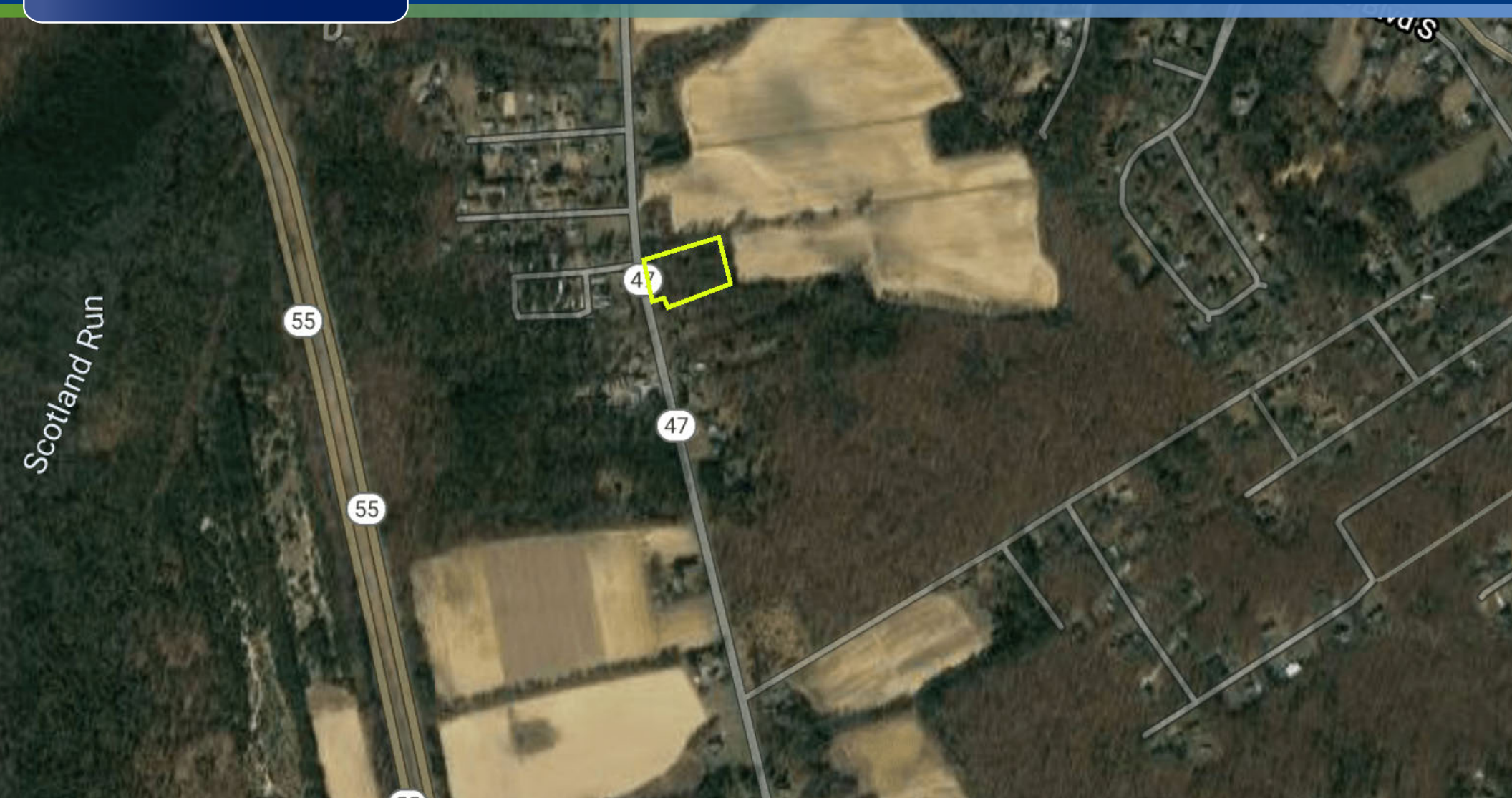




PREMIER 2.67 ACRE LAND SITE AVAILABLE FOR SALE



140-146 DELSEA DRIVE | FRANKLIN TOWNSHIP, NJ



Wolf Commercial Real Estate  
[www.WolfCRE.com](http://www.WolfCRE.com)





## PROPERTY DESCRIPTION

<b>Location</b>	140 Delsea Drive Franklin Township, NJ 08344
<b>Acres Available</b>	2.67 SF
<b>Sale Price</b>	\$146,850
<b>Property / Area Description</b>	<ul style="list-style-type: none"> <li>• Block 5101: Lots 15, 17 &amp; 18</li> <li>• Situated on +/- 2.67 acres</li> <li>• Located in Franklin Township, Gloucester County, NJ</li> <li>• Approximately 217' of frontage on Delsea Drive</li> <li>• Zoned Malaga Village</li> <li>• Potential uses including, but not limited to: office, retail, financial institution, restaurant, places of worship, childcare center, single-family detached housing</li> <li>• Convenient to Route 55 and major thoroughfares leading to Vineland</li> </ul>



## Contact Us

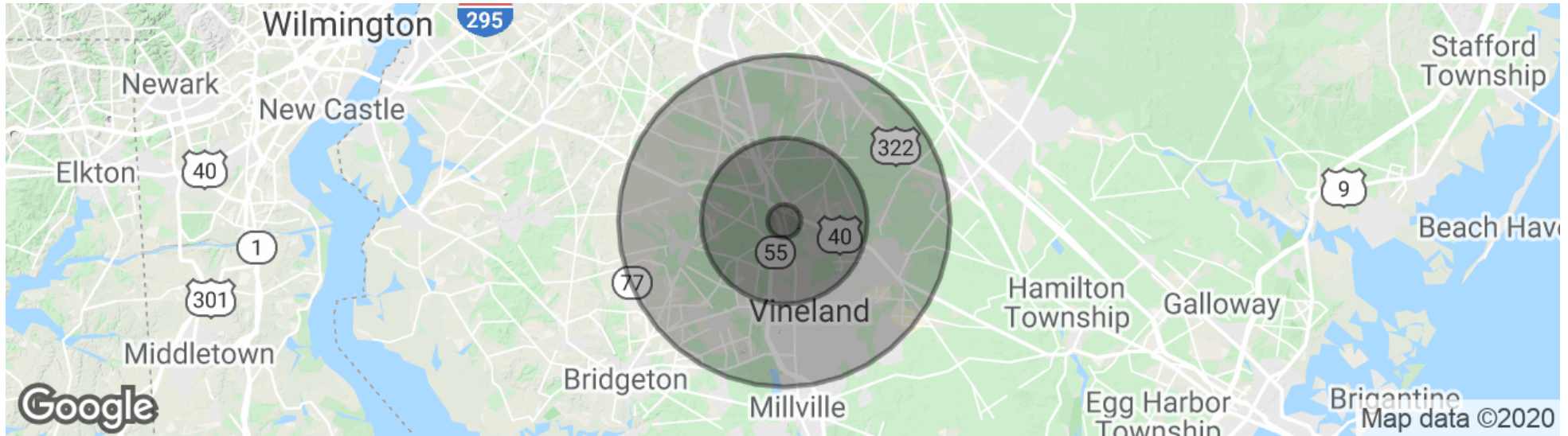
Christopher Henderson  
Principal & Vice President  
856.857.6337  
chris.henderson@wolfcre.com

Tammi Coppinger  
Director of Operations/Executive Property Manager  
856.857.6303  
tammi.coppinger@wolfcre.com

follow us:    

The foregoing information was furnished to us by sources which we deem to be reliable, but no warranty or representation is made as to the accuracy thereof. Subject to correction of errors, omissions, change of price, prior sale or withdrawal from market without notice.

## DEMOGRAPHICS MAP & REPORT



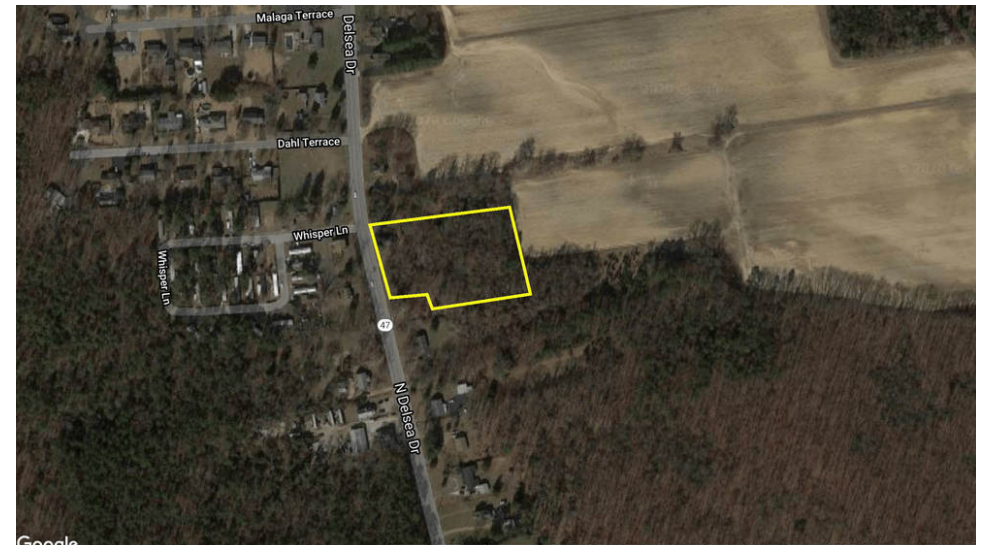
### POPULATION

	1 MILE	5 MILES	10 MILES
Total Population	1,233	32,463	166,919
Median age	40.5	39.7	37.7
Median age (Male)	38.3	38.3	36.2
Median age (Female)	42.5	41.0	39.3

### HOUSEHOLDS & INCOME

	1 MILE	5 MILES	10 MILES
Total households	444	11,513	58,088
# of persons per HH	2.8	2.8	2.9
Average HH income	\$67,532	\$75,199	\$74,149
Average house value	\$248,278	\$243,219	\$232,845

\* Demographic data derived from 2010 US Census



The foregoing information was furnished to us by sources which we deem to be reliable, but no warranty or representation is made as to the accuracy thereof. Subject to correction of errors, omissions, change of price, prior sale or withdrawal from market without notice.