



413-415 STOKES ROAD | MEDFORD, NJ

PROPERTY DESCRIPTION

Location	413- 415 Stokes Road Medford, NJ 08055
Size / SF Available	1,200 & 2,400 SF
Lease Price	Call for more information
Signage	Tenant signage available directly on Stokes Road
Property / Area Description	<ul style="list-style-type: none"> • Abundant parking • Located in downtown Medford Business community • Excellent visibility and signage on Stokes Road • Located equidistant between Medford Village and the beautiful Medford Lakes

Contact Us

Michael Scanzano

Associate

856.857.6386

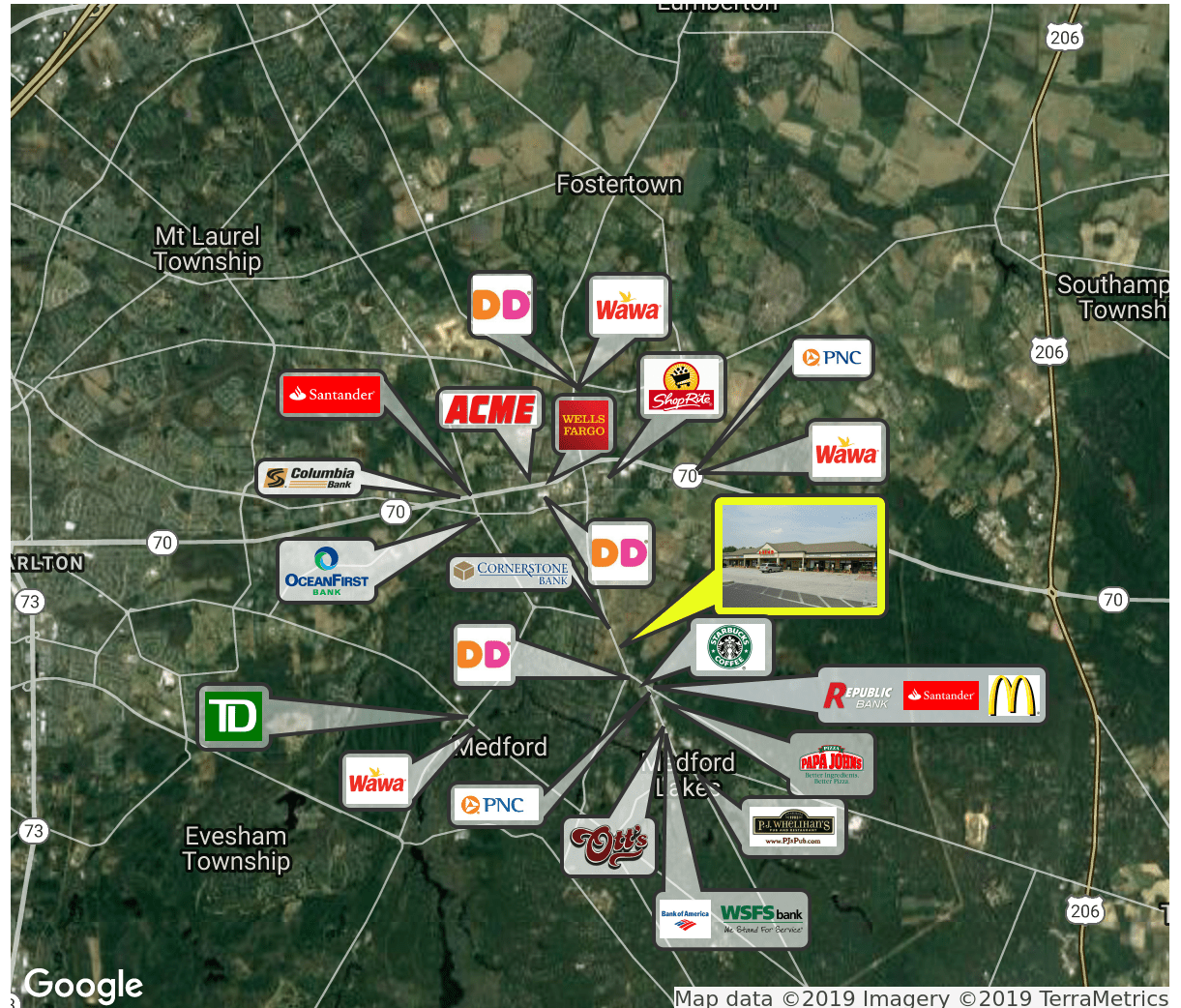
mike.scanzano@wolfcre.com

Ryan Barikian

Senior Associate

856.857.6307

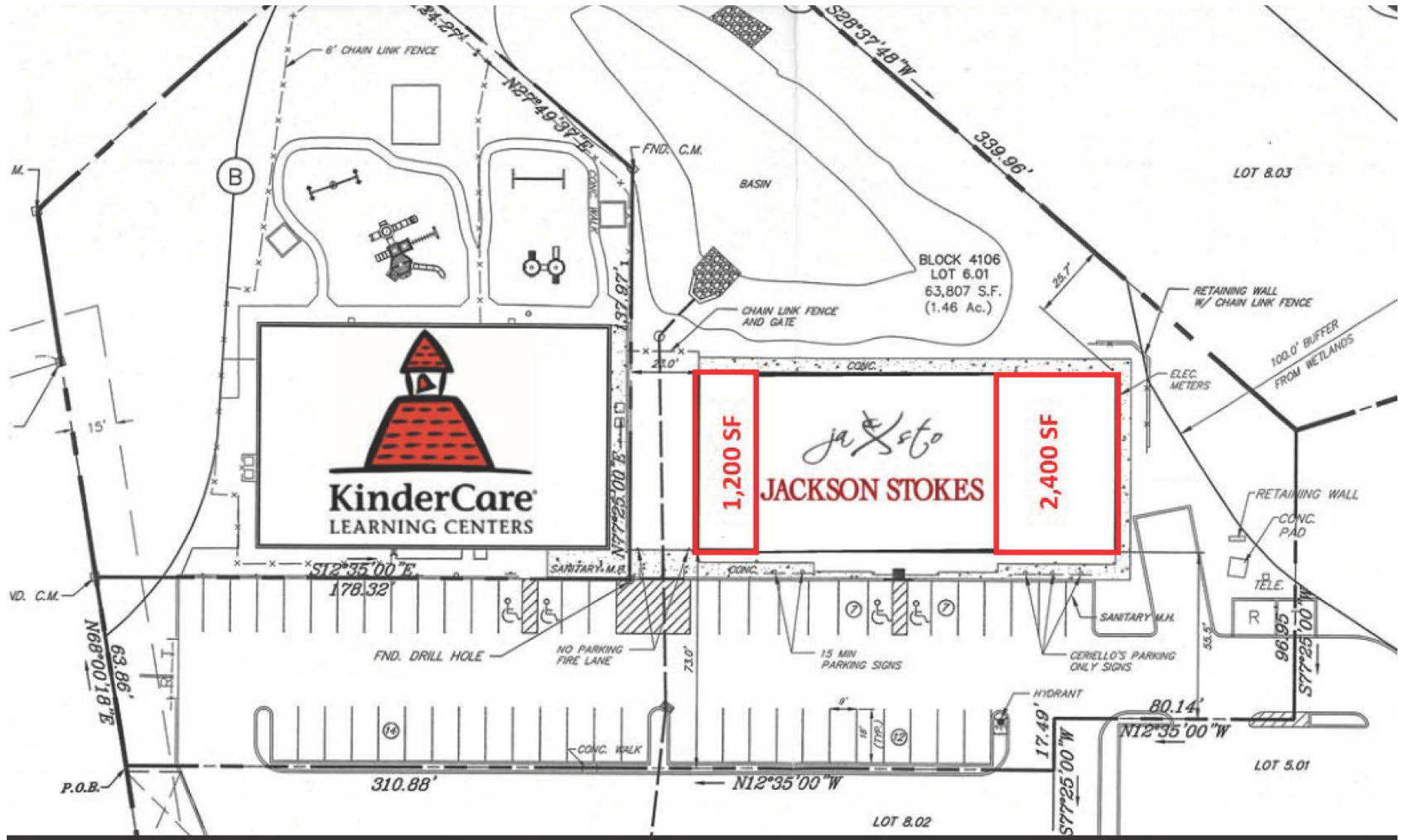
ryan.barikian@wolfcre.com



follow us:    

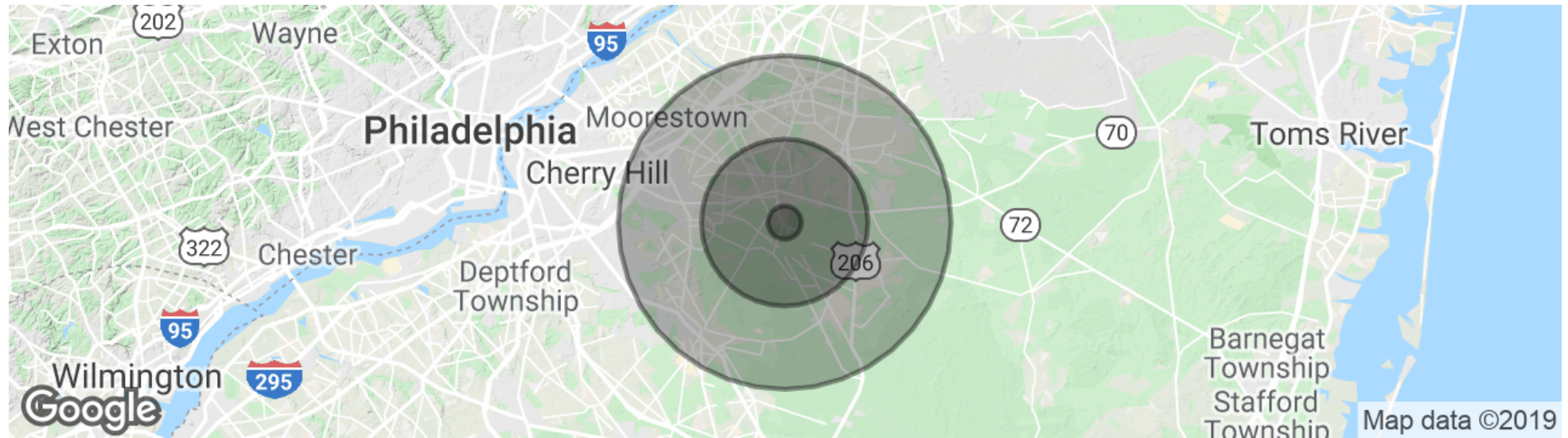
The foregoing information was furnished to us by sources which we deem to be reliable, but no warranty or representation is made as to the accuracy thereof. Subject to correction of errors, omissions, change of price, prior sale or withdrawal from market without notice.

SITE PLAN



The foregoing information was furnished to us by sources which we deem to be reliable, but no warranty or representation is made as to the accuracy thereof. Subject to correction of errors, omissions, change of price, prior sale or withdrawal from market without notice.

DEMOGRAPHICS MAP & REPORT



POPULATION	1 MILE	5 MILES	10 MILES
Total Population	2,680	51,197	272,421
Median age	42.3	40.7	40.4
Median age (Male)	41.1	40.0	39.3
Median age (Female)	44.5	41.8	41.6
HOUSEHOLDS & INCOME	1 MILE	5 MILES	10 MILES
Total households	929	18,721	100,884
# of persons per HH	2.9	2.7	2.7
Average HH income	\$118,993	\$121,268	\$106,737
Average house value	\$356,725	\$402,926	\$349,416

* Demographic data derived from 2010 US Census



The foregoing information was furnished to us by sources which we deem to be reliable, but no warranty or representation is made as to the accuracy thereof. Subject to correction of errors, omissions, change of price, prior sale or withdrawal from market without notice.