



PROFESSIONAL OFFICE PROPERTY AVAILABLE FOR SALE OR LEASE



1021 OLD YORK ROAD | ABINGTON, PA



Wolf Commercial Real Estate
www.WolfCRE.com



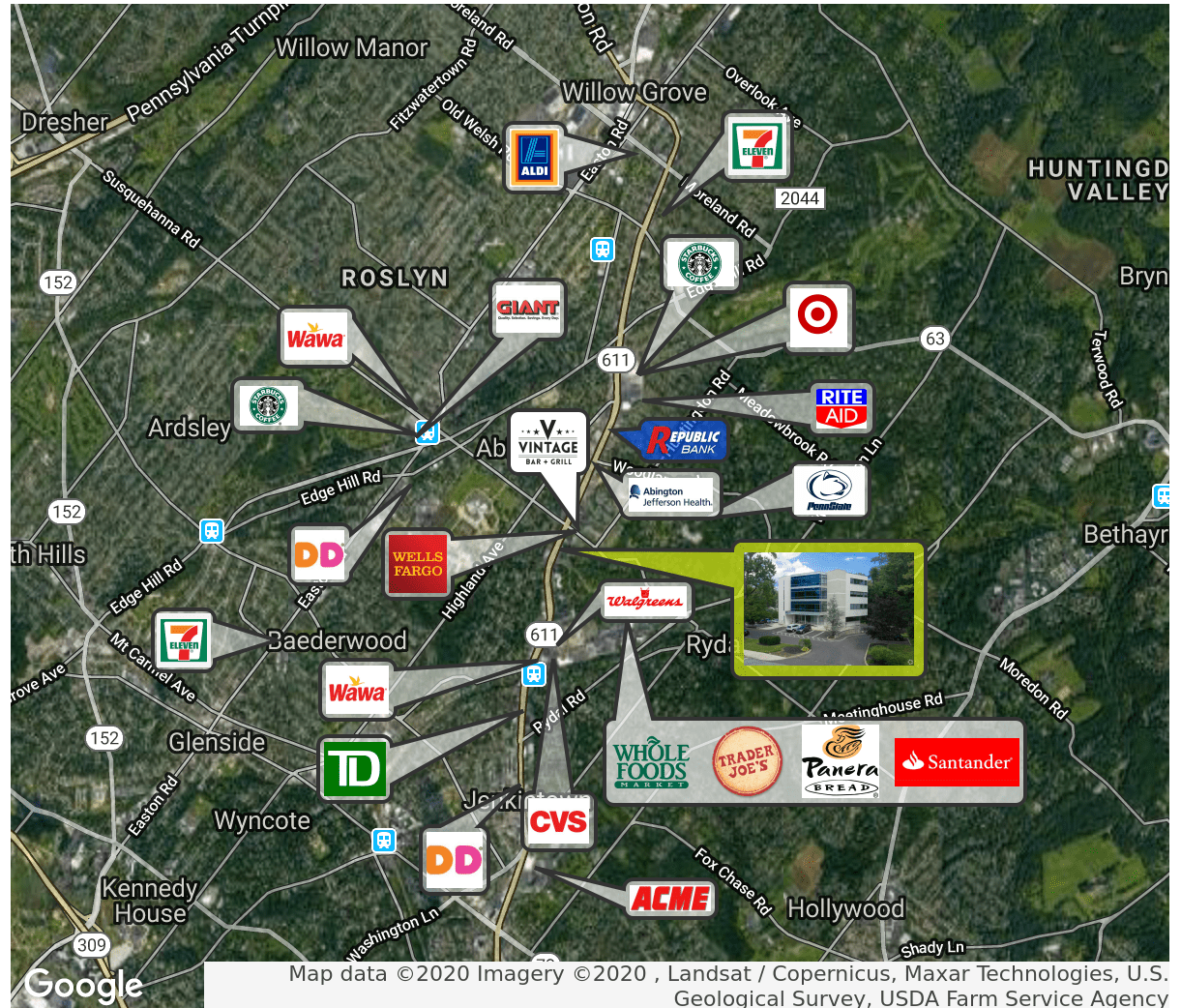
PROPERTY DESCRIPTION

- Location** 1021 Old York Road
Abington, PA 19001
- Size / SF Available** 1,500 - 8,000 SF
- Lease Price** \$18.00/SF (NNN)
- Signage** Pylon Signage Available on Old York Road (37,000 VPD)
- Property / Area Description**
- Ideal for professional office or medical use
 - Fully built out office space with premier finishes
 - Pylon Signage Available on Old York Road (37,000 VPD)
 - Building security system in place
 - Blocks away from SEPTA train station and bus stop
 - Located in area with numerous amenities
 - Close proximity to Abington Hospital and Penn State Abington

Contact Us

Mitch Russell
Associate
215.799.6143
mitch.russell@wolfcre.com

Sean Kelly
Associate
215.799.6146
sean.kelly@wolfcre.com



follow us:    

The foregoing information was furnished to us by sources which we deem to be reliable, but no warranty or representation is made as to the accuracy thereof. Subject to correction of errors, omissions, change of price, prior sale or withdrawal from market without notice.

ADDITIONAL PHOTOS



The foregoing information was furnished to us by sources which we deem to be reliable, but no warranty or representation is made as to the accuracy thereof. Subject to correction of errors, omissions, change of price, prior sale or withdrawal from market without notice.

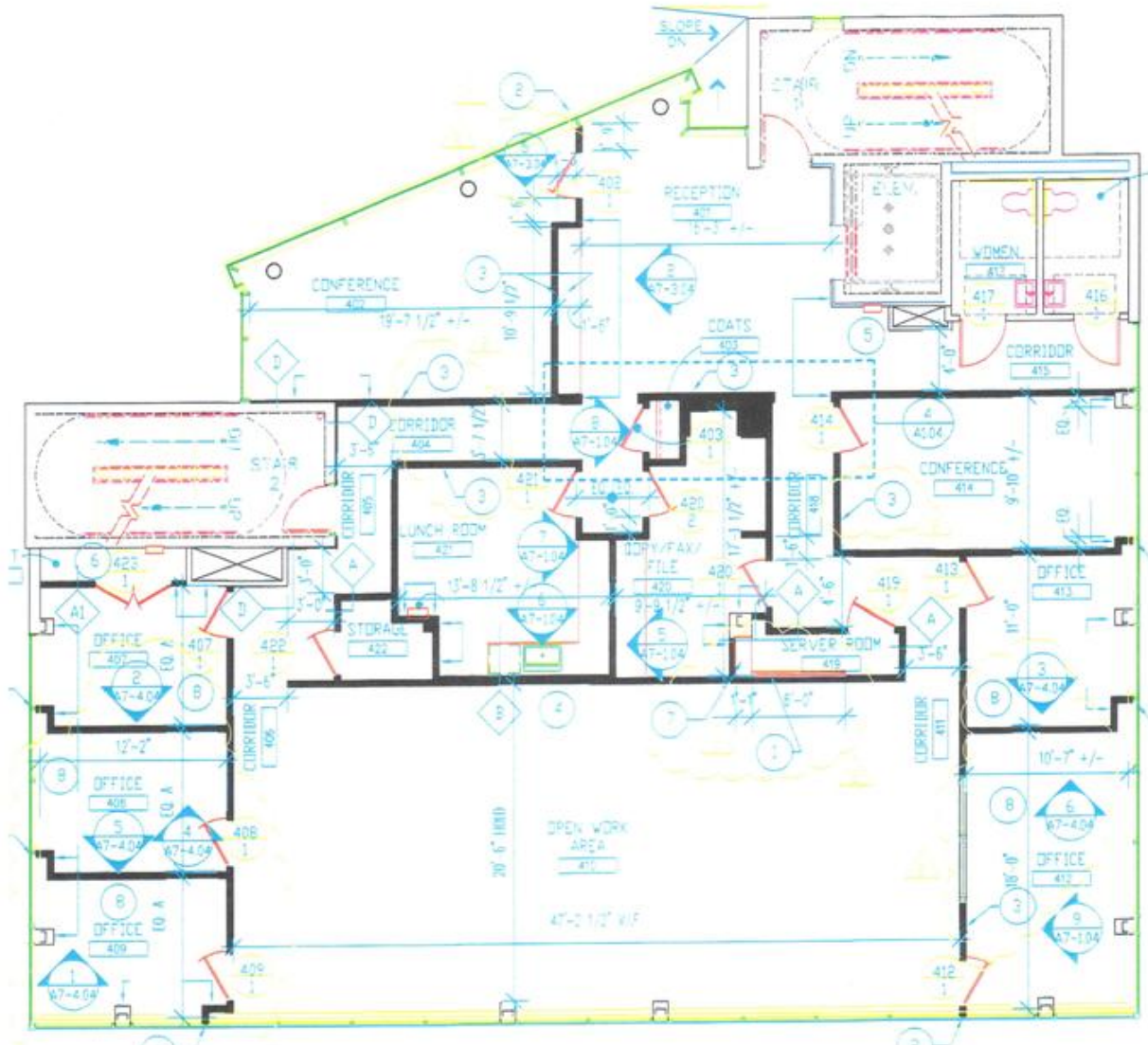
ADDITIONAL PHOTOS



The foregoing information was furnished to us by sources which we deem to be reliable, but no warranty or representation is made as to the accuracy thereof. Subject to correction of errors, omissions, change of price, prior sale or withdrawal from market without notice.

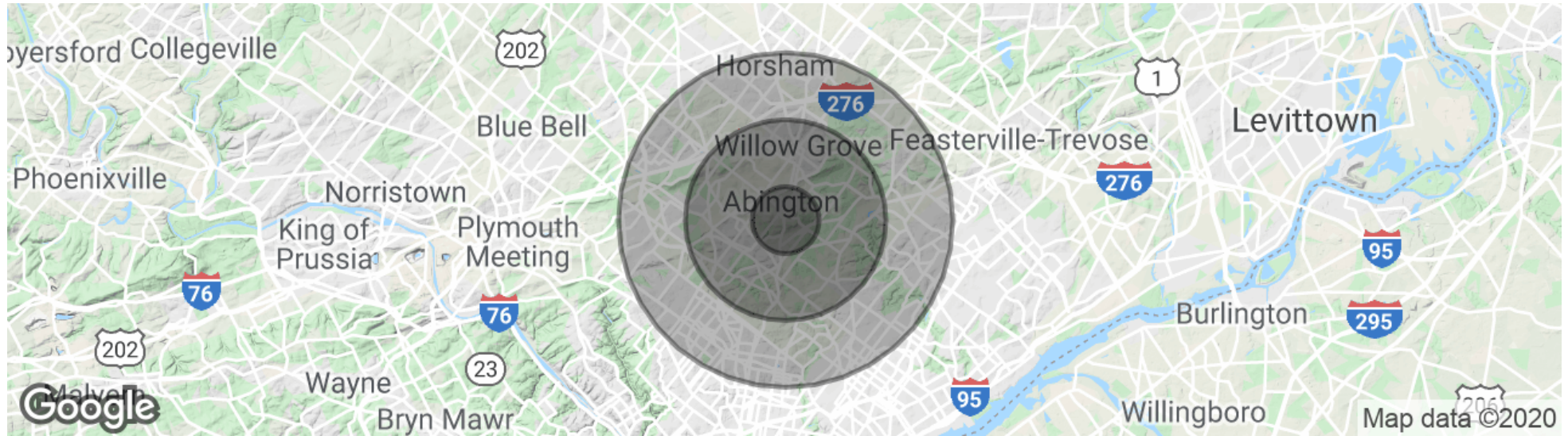


The foregoing information was furnished to us by sources which we deem to be reliable, but no warranty or representation is made as to the accuracy thereof. Subject to correction of errors, omissions, change of price, prior sale or withdrawal from market without notice.



The foregoing information was furnished to us by sources which we deem to be reliable, but no warranty or representation is made as to the accuracy thereof. Subject to correction of errors, omissions, change of price, prior sale or withdrawal from market without notice.

DEMOGRAPHICS MAP & REPORT



POPULATION	1 MILE	3 MILES	5 MILES
Total Population	11,789	108,859	383,267
Median age	44.6	42.4	40.7
Median age (Male)	44.3	41.5	38.6
Median age (Female)	45.2	42.9	42.4
HOUSEHOLDS & INCOME	1 MILE	3 MILES	5 MILES
Total households	4,916	42,936	150,071
# of persons per HH	2.4	2.5	2.6
Average HH income	\$100,743	\$97,330	\$76,218
Average house value	\$305,057	\$300,615	\$266,937

* Demographic data derived from 2010 US Census



The foregoing information was furnished to us by sources which we deem to be reliable, but no warranty or representation is made as to the accuracy thereof. Subject to correction of errors, omissions, change of price, prior sale or withdrawal from market without notice.