



100 BROMLEY BOULEVARD | BURLINGTON, NJ

## PROPERTY DESCRIPTION

- Location** 100 Bromley Boulevard  
Burlington, NJ 08016
- Acres Available** 1.01 Acres
- Sale Price** \$425,000
- Property / Area Description**
- Situated off Route 541 between Exit 5 of the NJ Turnpike and Route I-295 at Exit 47A
  - 450,000 SF Towne Crossing adjacent to the site with Home Depot, Target, Kohl's, Office Max, Dick's, TGIF, IHop, Burger King, AT&T, Mattress Firm, Starbucks and Regal Cinema
  - Zoned B-1: Lot 125 Lot 15
  - Close proximity to proposed/approved new Virtua Hospital on Route 541
  - Located in Burlington Township, Burlington County, New Jersey

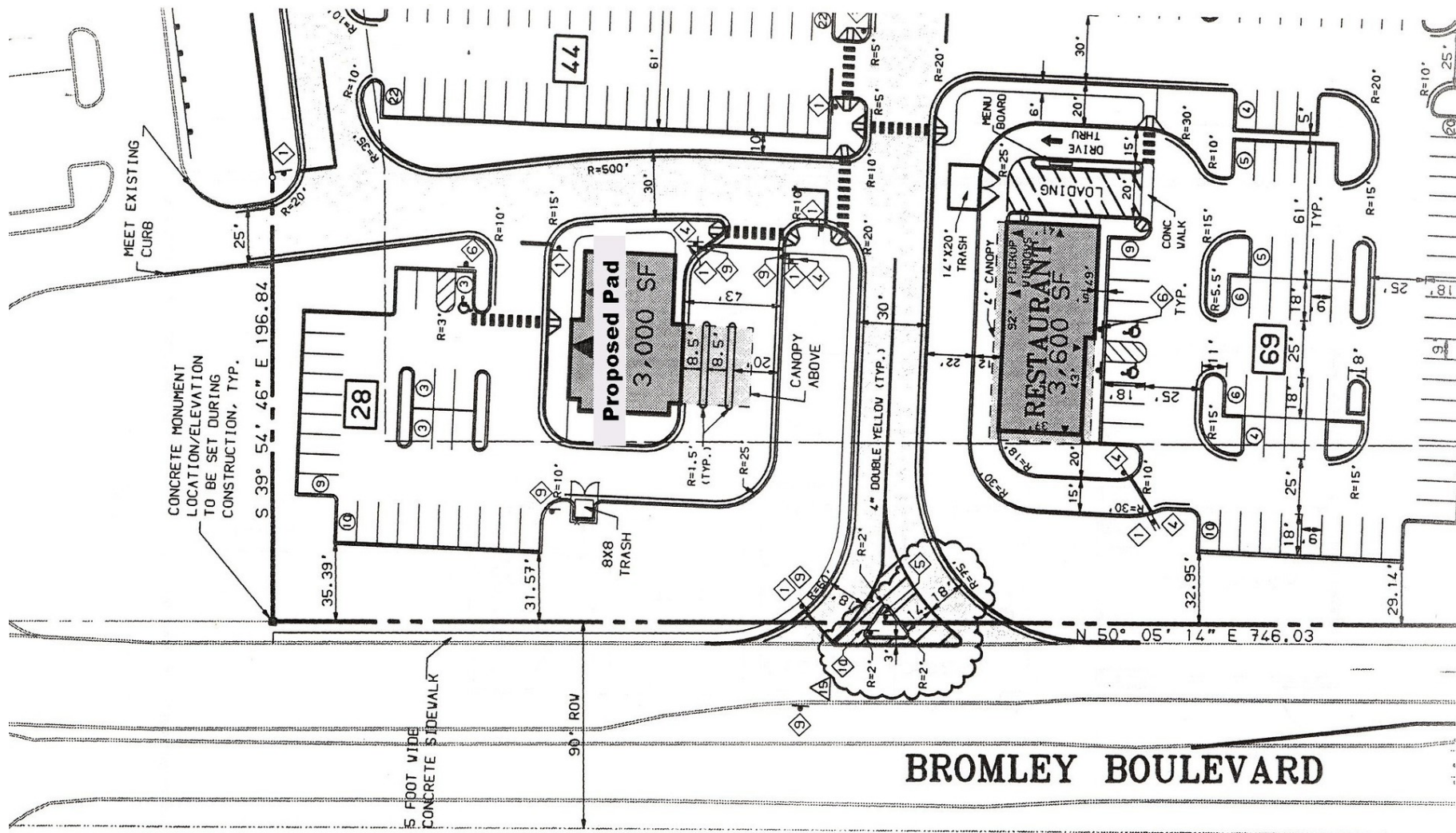


## Contact Us

Ryan Barikian Senior Associate 856.857.6307 ryan.barikian@wolfcre.com	Jason Wolf Managing Principal 856.857.6301 jason.wolf@wolfcre.com
--	--

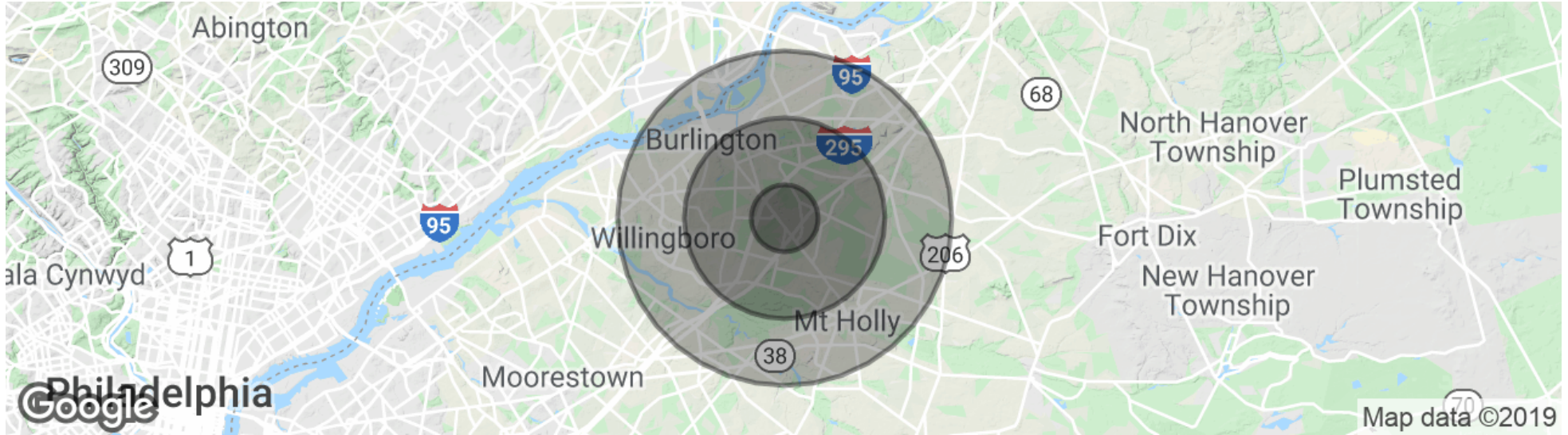
The foregoing information was furnished to us by sources which we deem to be reliable, but no warranty or representation is made as to the accuracy thereof. Subject to correction of errors, omissions, change of price, prior sale or withdrawal from market without notice.

SITE PLAN



The foregoing information was furnished to us by sources which we deem to be reliable, but no warranty or representation is made as to the accuracy thereof. Subject to correction of errors, omissions, change of price, prior sale or withdrawal from market without notice.

## DEMOGRAPHICS MAP & REPORT



<b>POPULATION</b>	<b>1 MILE</b>	<b>3 MILES</b>	<b>5 MILES</b>
Total Population	3,940	31,897	126,274
Median age	38.1	37.5	39.0
Median age (Male)	37.7	36.9	37.7
Median age (Female)	38.1	38.0	40.1
<b>HOUSEHOLDS &amp; INCOME</b>	<b>1 MILE</b>	<b>3 MILES</b>	<b>5 MILES</b>
Total households	1,383	11,308	45,808
# of persons per HH	2.8	2.8	2.8
Average HH income	\$92,236	\$91,646	\$79,939
Average house value	\$332,883	\$298,605	\$275,748

\* Demographic data derived from 2010 US Census



The foregoing information was furnished to us by sources which we deem to be reliable, but no warranty or representation is made as to the accuracy thereof. Subject to correction of errors, omissions, change of price, prior sale or withdrawal from market without notice.