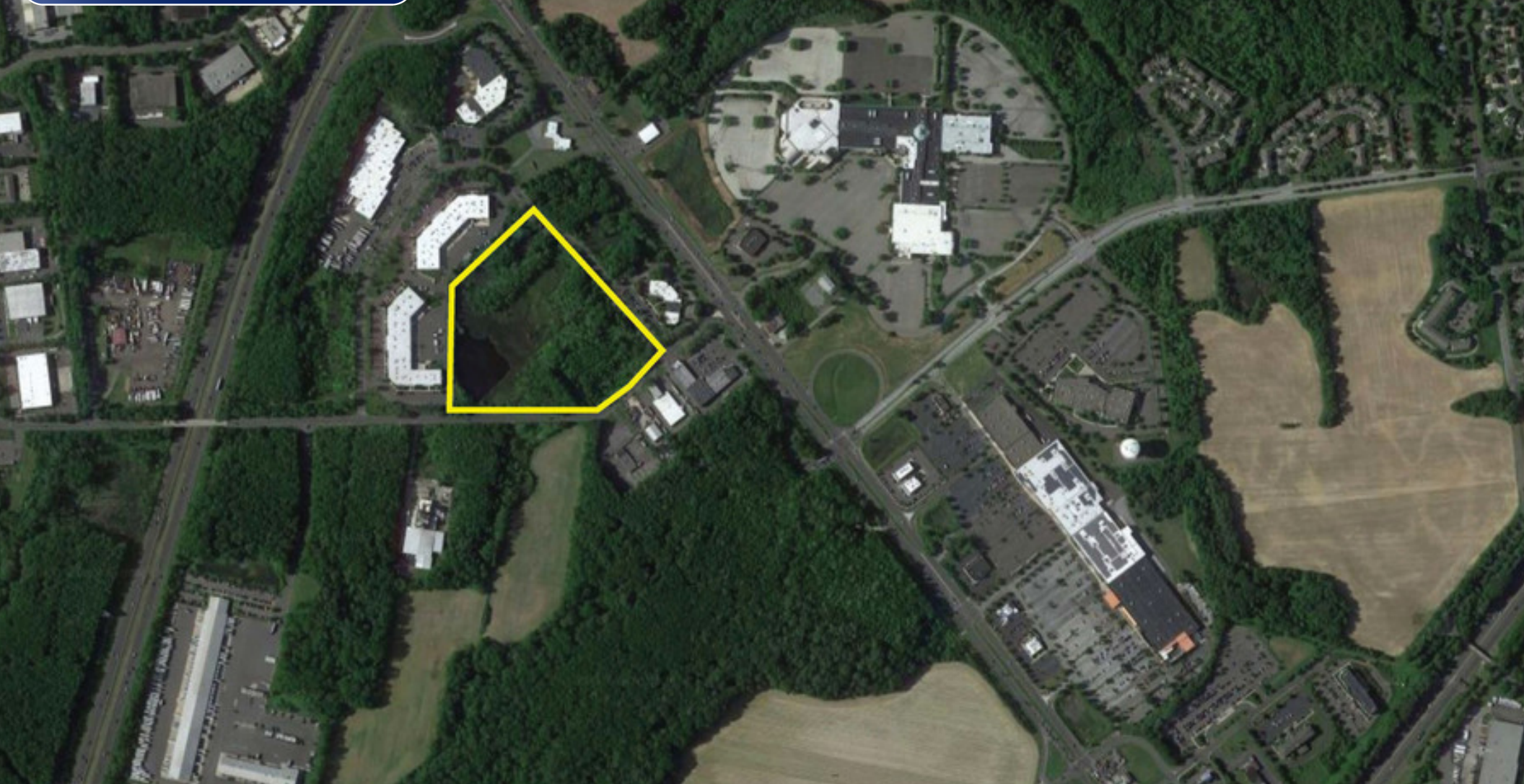




PREMIER BURLINGTON LAND SITE AVAILABLE FOR SALE



1 TERRI LANE | BURLINGTON, NJ



Wolf Commercial Real Estate
www.WolfCRE.com

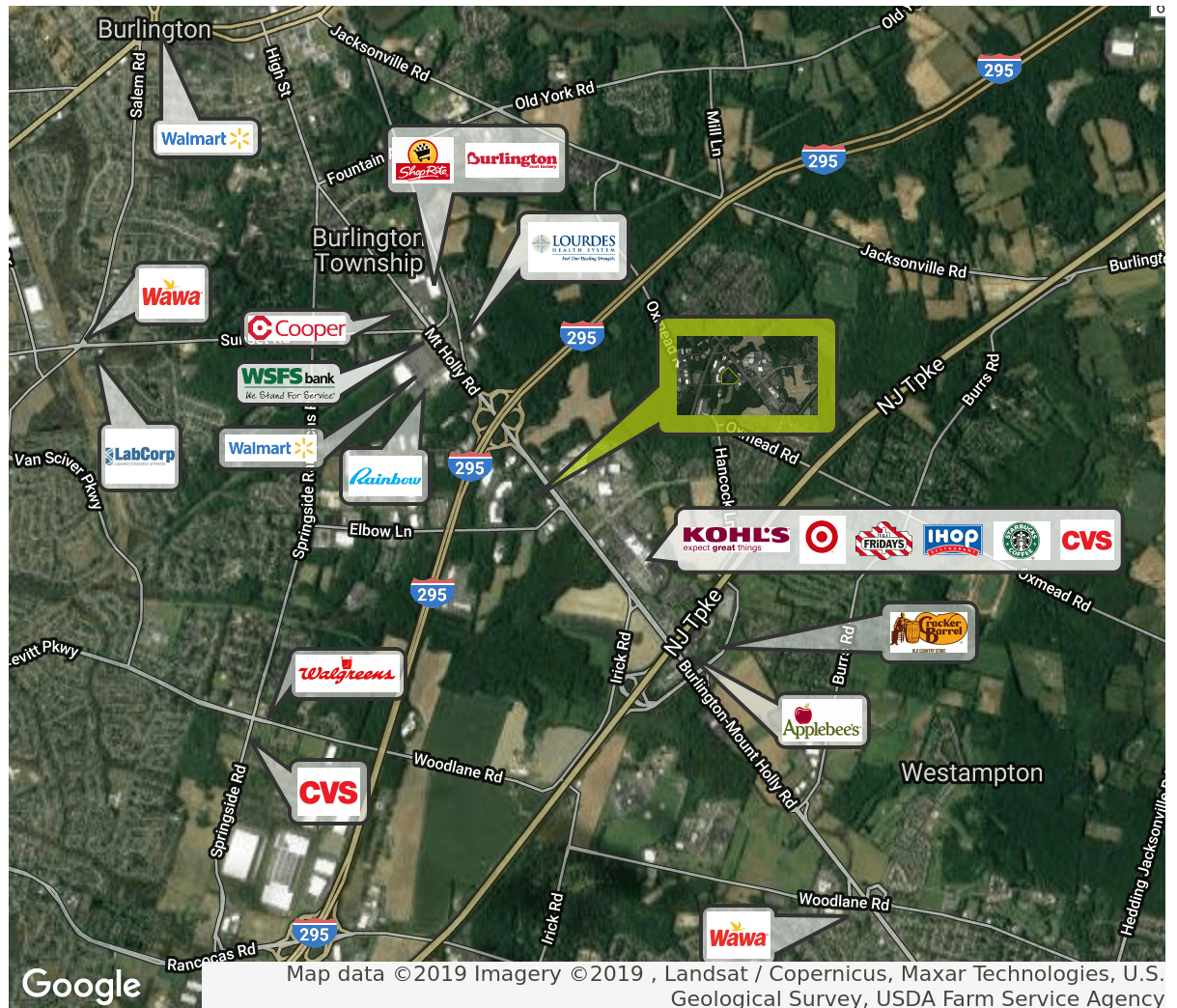


PROPERTY DESCRIPTION

Location	1 Terri Lane Burlington, NJ 08016
Acres Available	9 Acres
Sale Price	\$250,000
Property / Area Description	<ul style="list-style-type: none"> • Close proximity to New Jersey Turnpike and Route I-295 • Zoned Commercial/Industrial Ideal for light industrial or flex building • Close to proposed/approved new Virtua Hospital on Route 541 • Located in Burlington Township, Burlington County, New Jersey • Access to numerous amenities within the trade area and close proximity to the Burlington Town Center

Contact Us

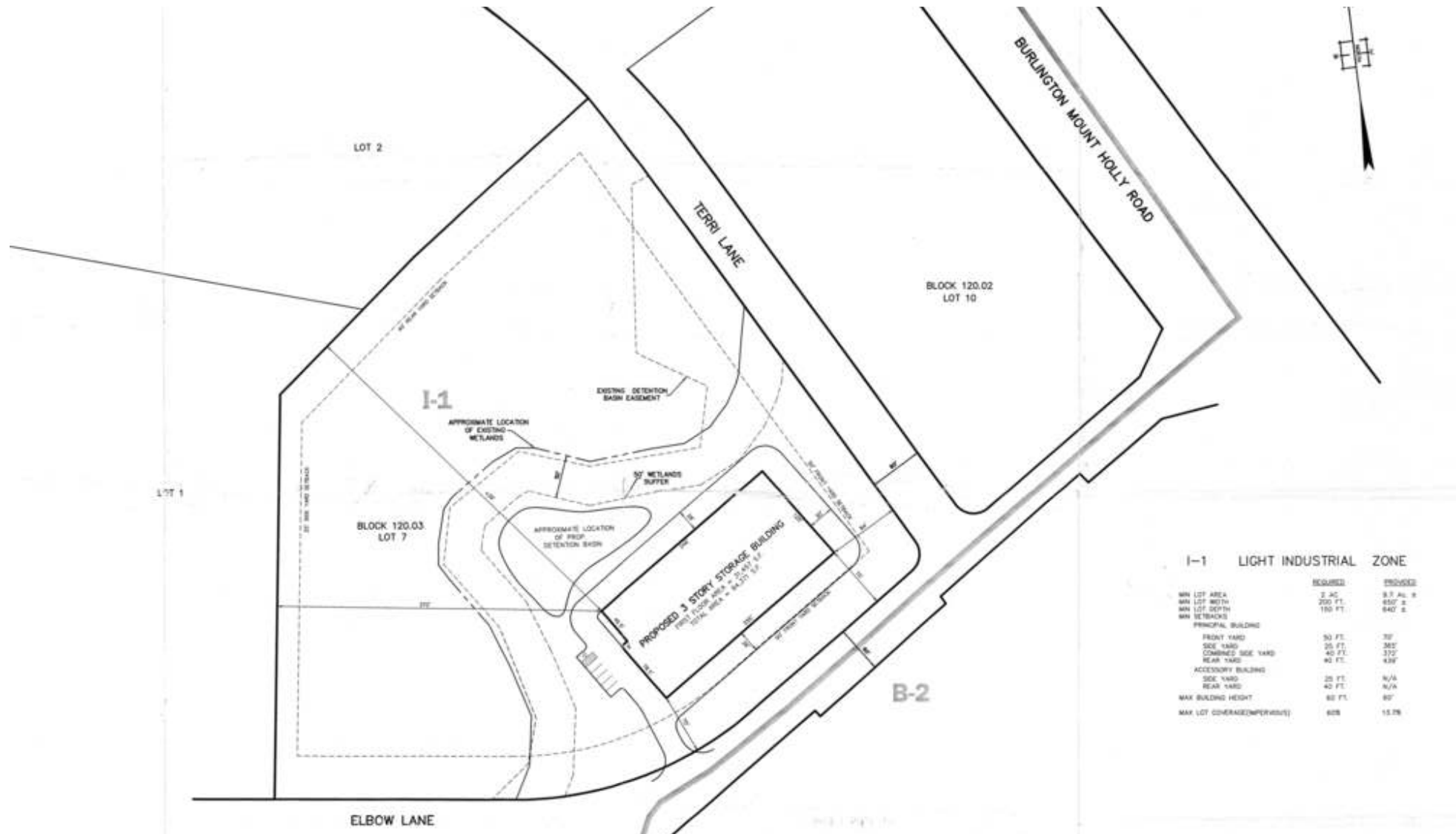
Ryan Barikian Senior Associate 856.857.6307 ryan.barikian@wolfcre.com	Jason Wolf Managing Principal 856.857.6301 jason.wolf@wolfcre.com
--	--



follow us:    

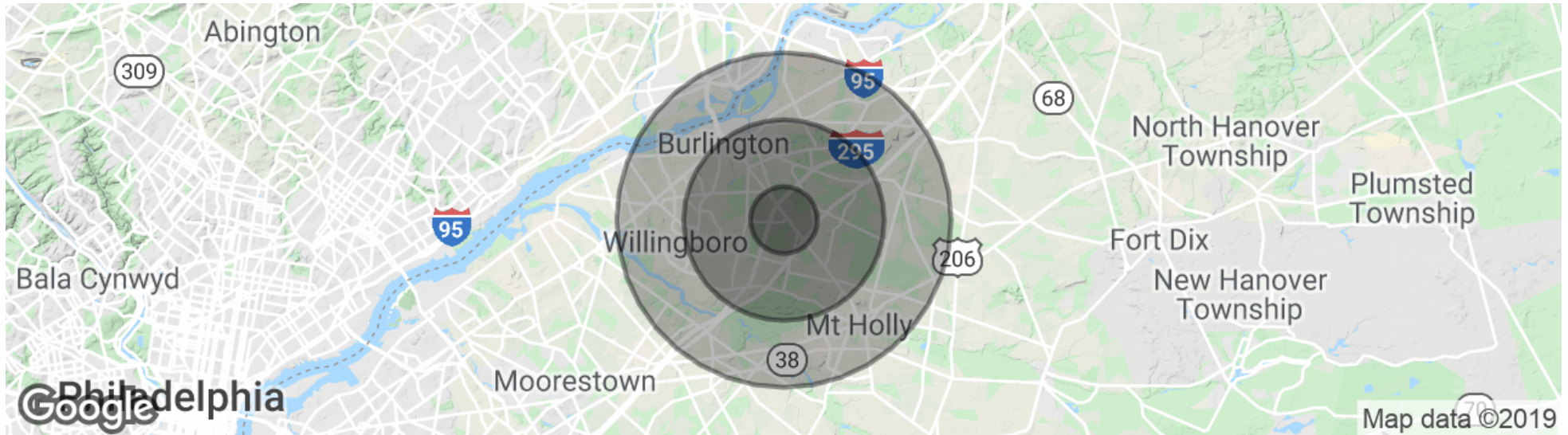
The foregoing information was furnished to us by sources which we deem to be reliable, but no warranty or representation is made as to the accuracy thereof. Subject to correction of errors, omissions, change of price, prior sale or withdrawal from market without notice.

BROMLEY PARCEL MASTER CONCEPT PLAN



The foregoing information was furnished to us by sources which we deem to be reliable, but no warranty or representation is made as to the accuracy thereof. Subject to correction of errors, omissions, change of price, prior sale or withdrawal from market without notice.

DEMOGRAPHICS MAP & REPORT



POPULATION

	1 MILE	3 MILES	5 MILES
Total Population	4,414	38,951	134,605
Median age	38.8	38.2	38.9
Median age (Male)	38.6	37.5	37.7
Median age (Female)	38.8	38.7	40.0

HOUSEHOLDS & INCOME

	1 MILE	3 MILES	5 MILES
Total households	1,519	13,888	48,908
# of persons per HH	2.9	2.8	2.8
Average HH income	\$92,324	\$86,678	\$79,433
Average house value	\$330,528	\$294,470	\$270,359

* Demographic data derived from 2010 US Census



The foregoing information was furnished to us by sources which we deem to be reliable, but no warranty or representation is made as to the accuracy thereof. Subject to correction of errors, omissions, change of price, prior sale or withdrawal from market without notice.