



CHERRY HILL PROFESSIONAL OFFICE PROPERTY AVAILABLE



401 SOUTH KINGS HIGHWAY | CHERRY HILL, NJ

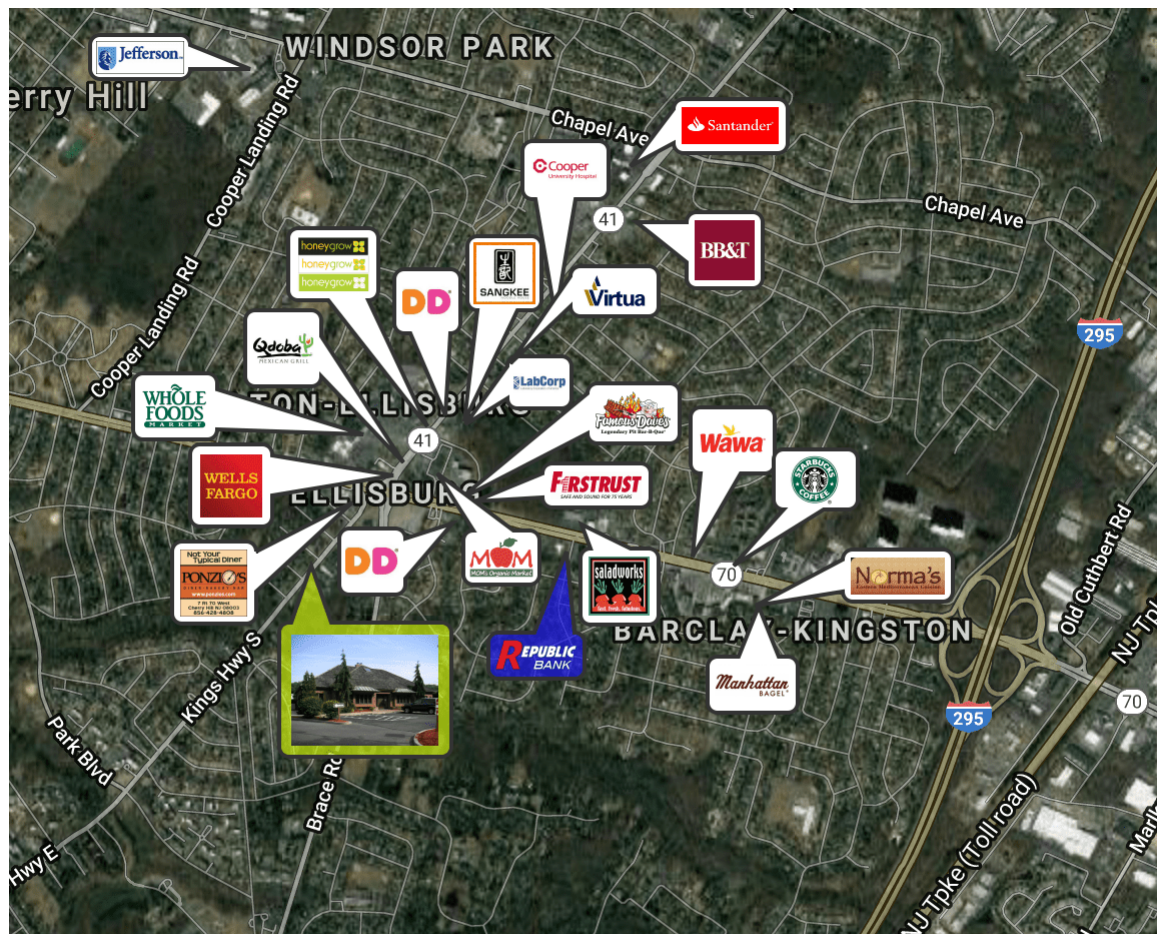


Wolf Commercial Real Estate
www.WolfCRE.com



PROPERTY DESCRIPTION

- Location** Tara Office Park
401 South Kings Highway
Cherry Hill, NJ 08034
- Size / SF Available** Building 1: 4,435 SF
Building 3: Suite A-B 4,166 SF
Suite C - 862 sf
Suite D - 572 sf
- Lease Price** \$12.00 SF/yr (NNN)
- Signage** Tenant monument directory, suite and office signage available
- Property / Area Description**
- Located in the Tara Professional Office Park
 - Situated directly off of Route 70 providing convenient access to I-295, NJ Turnpike and Route 73. Conveniently located on South Kings Highway providing for immediate access to Route 70, Haddonfield Business District and all points of Cherry Hill and surrounding areas.
 - Abundant Parking
 - Available for immediate occupancy
 - The subject property is within close proximity to Philadelphia and surrounded by many local amenities and businesses.
 - Recently renovated office building located within a beautifully landscaped professional campus.
 - Ideal location for various professional uses
 - Configured with efficient interior design and layout
 - Local ownership and management



Contact Us

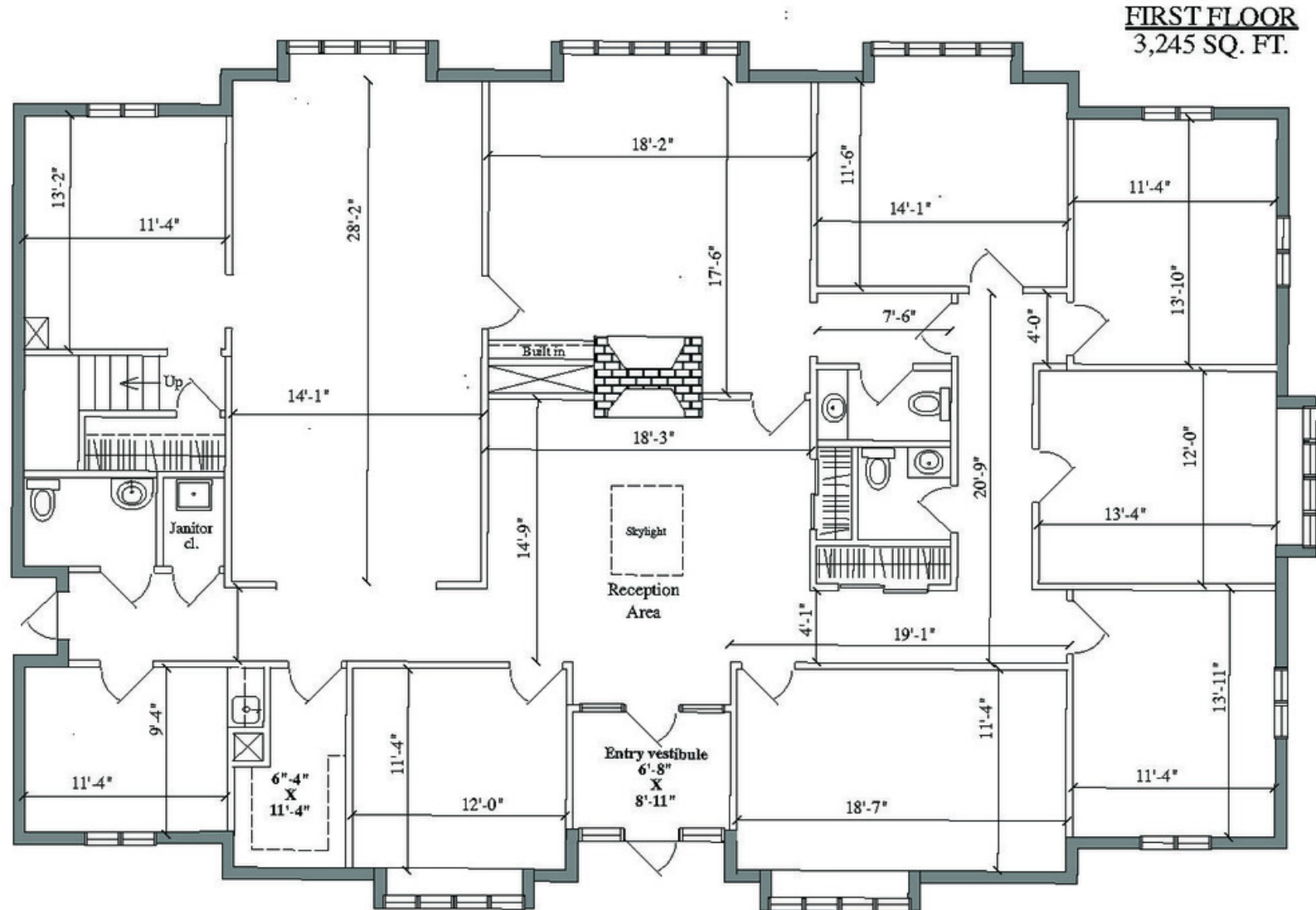
Christopher Henderson
Principal & Vice President
856.857.6337
chris.henderson@wolfcre.com

Jason Wolf
Managing Principal
856.857.6301
jason.wolf@wolfcre.com

follow us:    

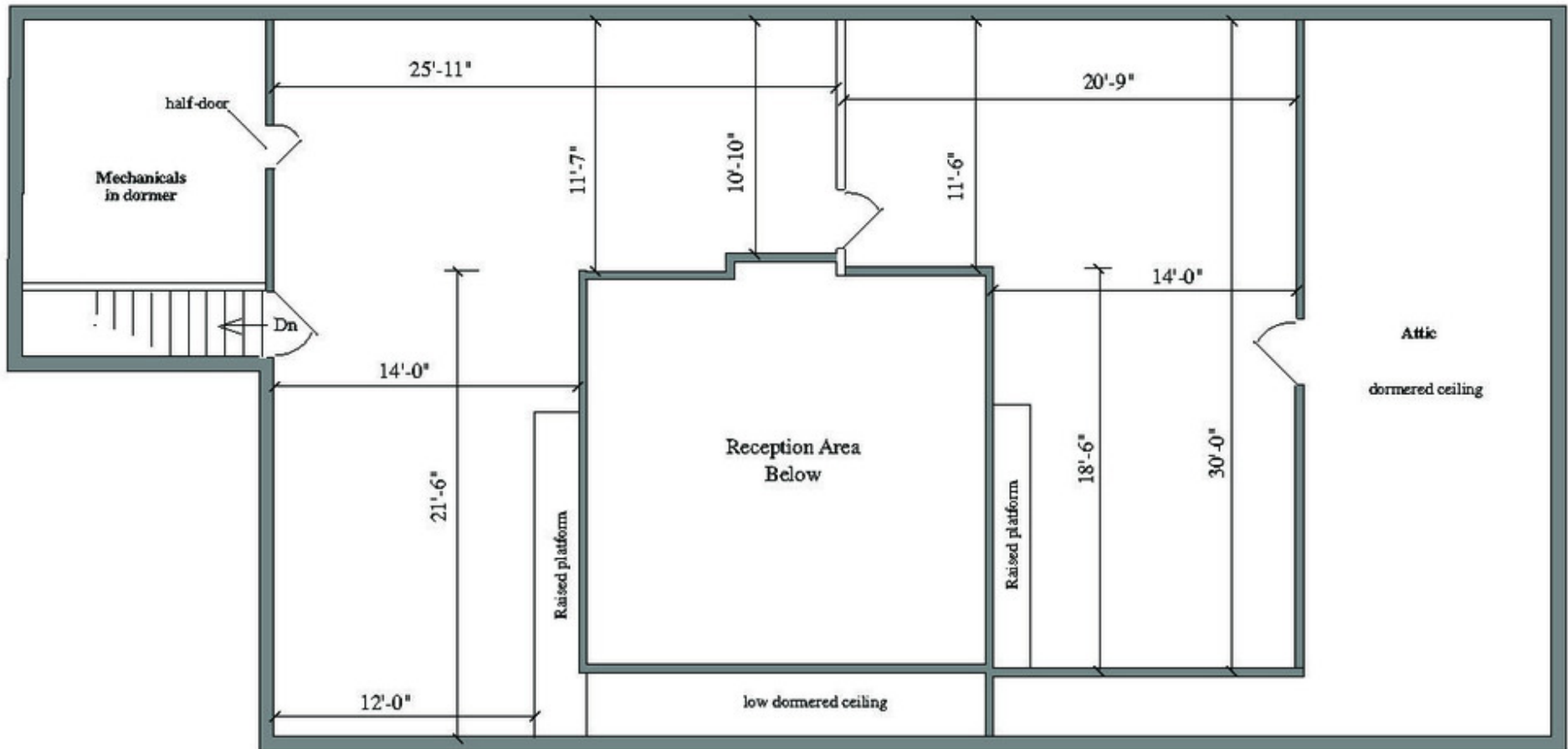
The foregoing information was furnished to us by sources which we deem to be reliable, but no warranty or representation is made as to the accuracy thereof. Subject to correction of errors, omissions, change of price, prior sale or withdrawal from market without notice.

FLOOR PLANS - BUILDING 1 - 1st Floor



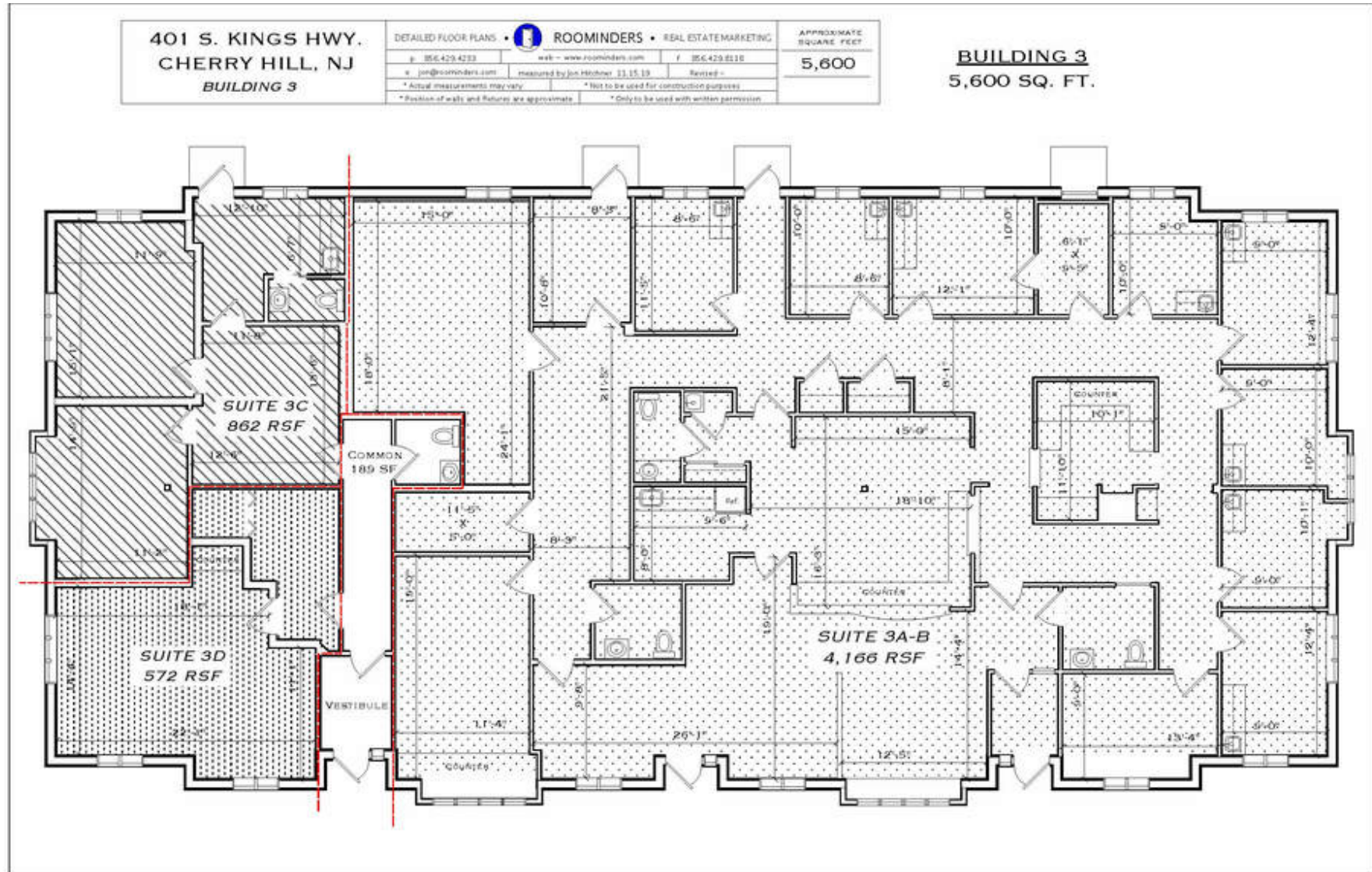
The foregoing information was furnished to us by sources which we deem to be reliable, but no warranty or representation is made as to the accuracy thereof. Subject to correction of errors, omissions, change of price, prior sale or withdrawal from market without notice.

FLOOR PLANS - BUILDING 1 - 2nd Floor



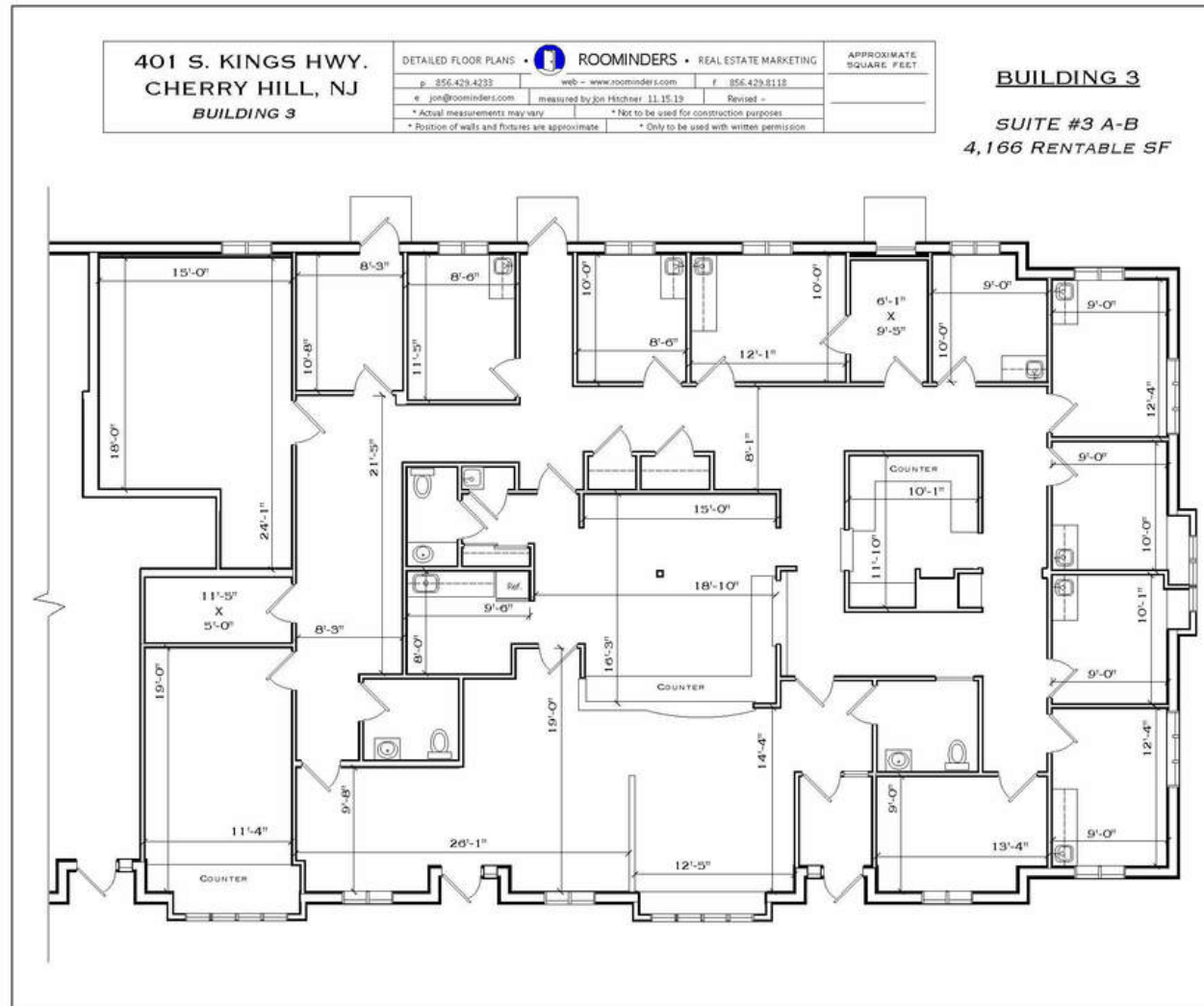
The foregoing information was furnished to us by sources which we deem to be reliable, but no warranty or representation is made as to the accuracy thereof. Subject to correction of errors, omissions, change of price, prior sale or withdrawal from market without notice.

FLOOR PLANS - BUILDING 3



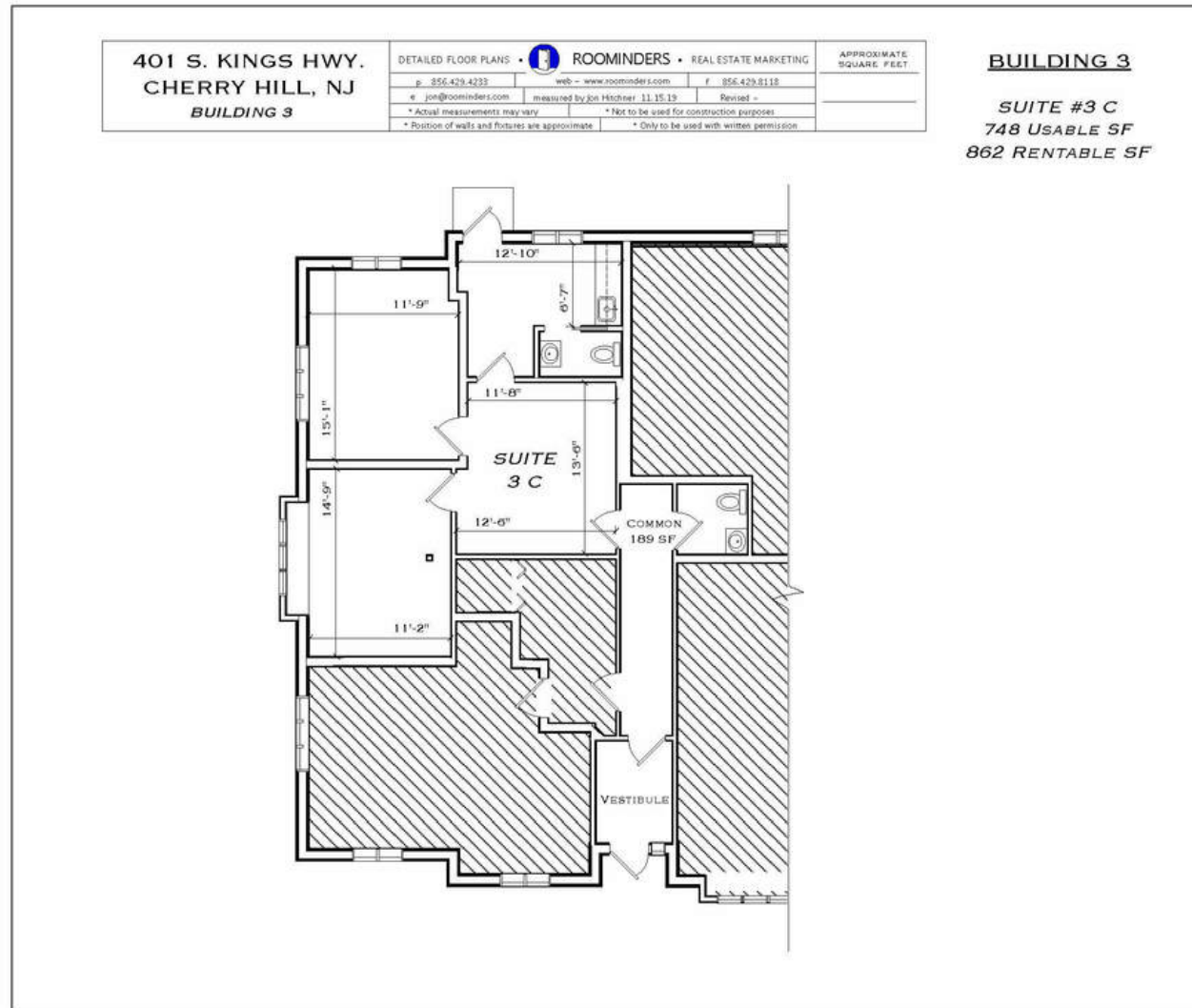
The foregoing information was furnished to us by sources which we deem to be reliable, but no warranty or representation is made as to the accuracy thereof. Subject to correction of errors, omissions, change of price, prior sale or withdrawal from market without notice.

FLOOR PLANS - BUILDING 3- 4,166 SF



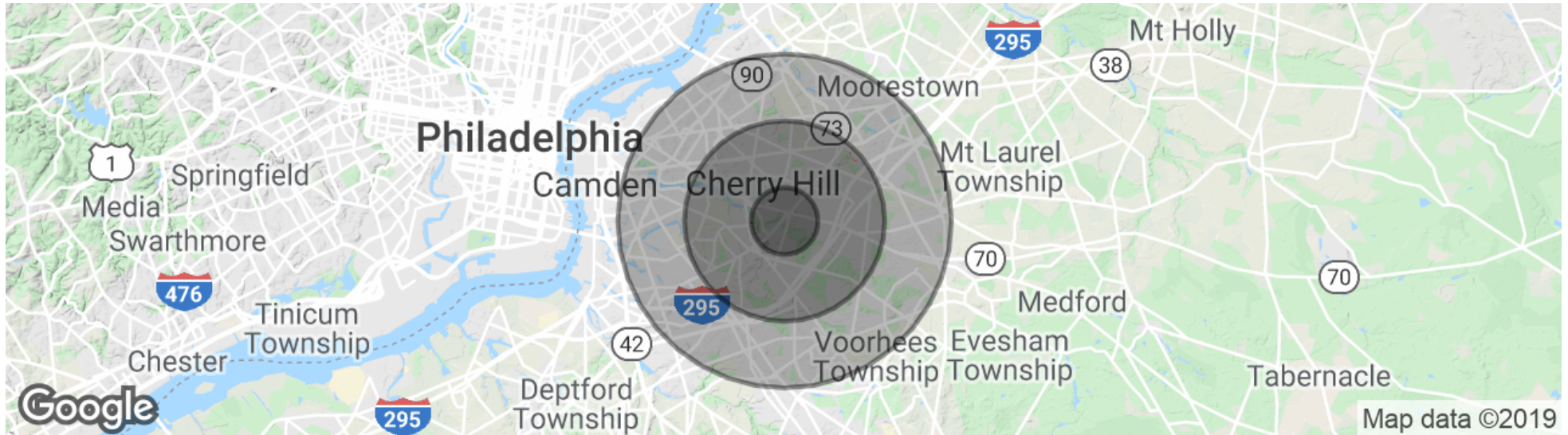
The foregoing information was furnished to us by sources which we deem to be reliable, but no warranty or representation is made as to the accuracy thereof. Subject to correction of errors, omissions, change of price, prior sale or withdrawal from market without notice.

FLOOR PLANS - BUILDING 3 - 862 SF



The foregoing information was furnished to us by sources which we deem to be reliable, but no warranty or representation is made as to the accuracy thereof. Subject to correction of errors, omissions, change of price, prior sale or withdrawal from market without notice.

DEMOGRAPHICS MAP & REPORT



POPULATION	1 MILE	3 MILES	5 MILES
Total Population	11,209	93,905	282,931
Median age	41.3	42.1	40.7
Median age (Male)	38.9	40.5	39.1
Median age (Female)	43.3	44.0	42.3
HOUSEHOLDS & INCOME	1 MILE	3 MILES	5 MILES
Total households	4,467	36,002	112,252
# of persons per HH	2.5	2.6	2.5
Average HH income	\$84,150	\$101,629	\$88,837
Average house value	\$268,693	\$306,539	\$278,369

* Demographic data derived from 2010 US Census



The foregoing information was furnished to us by sources which we deem to be reliable, but no warranty or representation is made as to the accuracy thereof. Subject to correction of errors, omissions, change of price, prior sale or withdrawal from market without notice.