



HIGHLY VISIBLE CHERRY HILL PROFESSIONAL OFFICE PROPERTY AVAILABLE FOR SALE



1806 SPRINGDALE ROAD | CHERRY HILL, NJ



Wolf Commercial Real Estate
www.WolfCRE.com

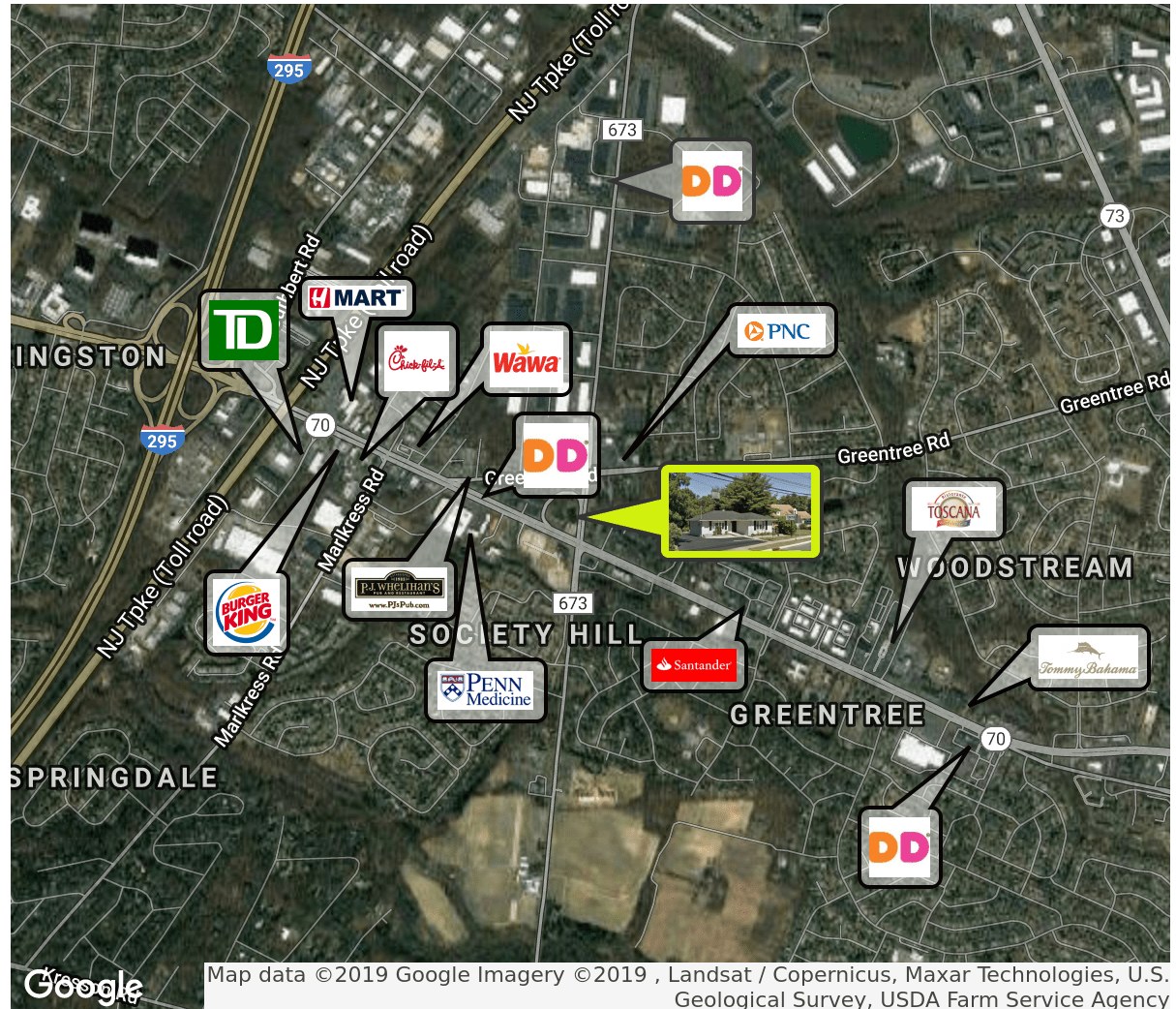


PROPERTY DESCRIPTION

| | |
|------------------------------------|--|
| Location | 1806 Springdale Road Cherry Hill, NJ 08003 |
| Size / SF Available | 2,352 SF |
| Sale Price | \$499,000 |
| Signage | Pylon Signage on Springdale Road |
| Property / Area Description | <ul style="list-style-type: none"> Highly visible professional office building Ideal for a variety of professional uses (Attorney, Accountant, Insurance, Architect, etc.) Pylon Signage on Springdale Road Within close proximity to local shopping, restaurants and banks Completely renovated upper and lower levels (both floors can be split for 2 occupants) Convenient location with easy access to Route I-295, Route 70 and within minutes to the Cherry Hill Business District |

Contact Us

| | |
|--|--|
| Bethany Brown Vice President 856.857.6396 bethany.brown@wolfcre.com | Jason Wolf Managing Principal 856.857.6301 jason.wolf@wolfcre.com |
|--|--|



follow us:    

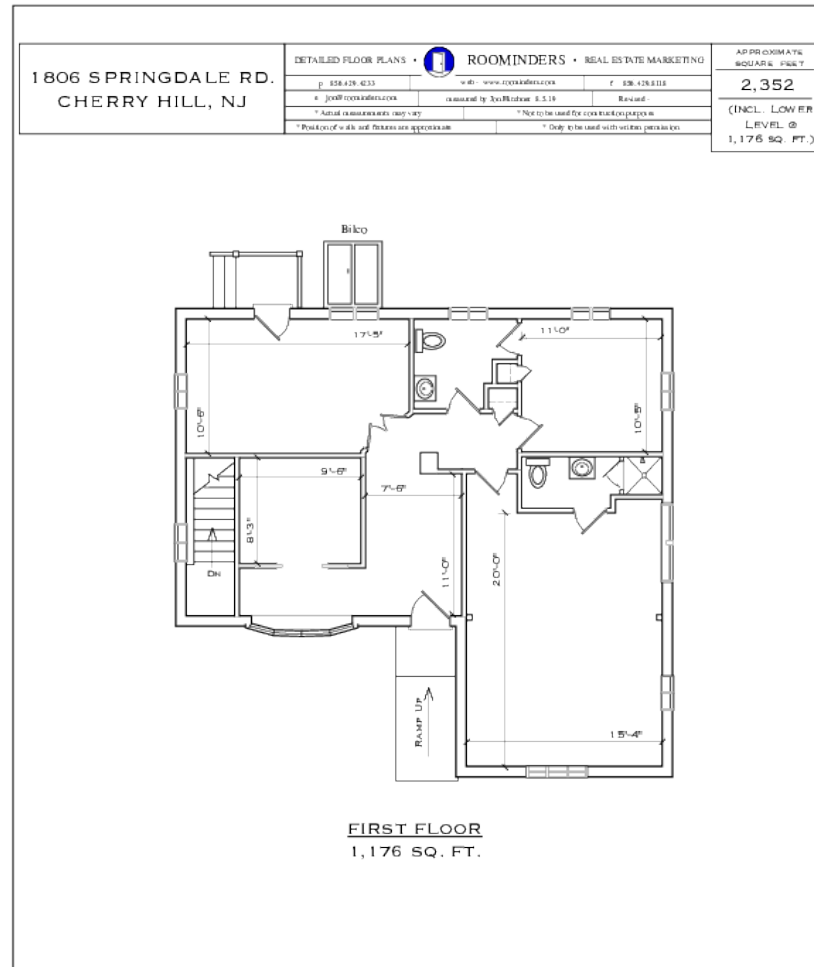
The foregoing information was furnished to us by sources which we deem to be reliable, but no warranty or representation is made as to the accuracy thereof. Subject to correction of errors, omissions, change of price, prior sale or withdrawal from market without notice.

ADDITIONAL PHOTOS



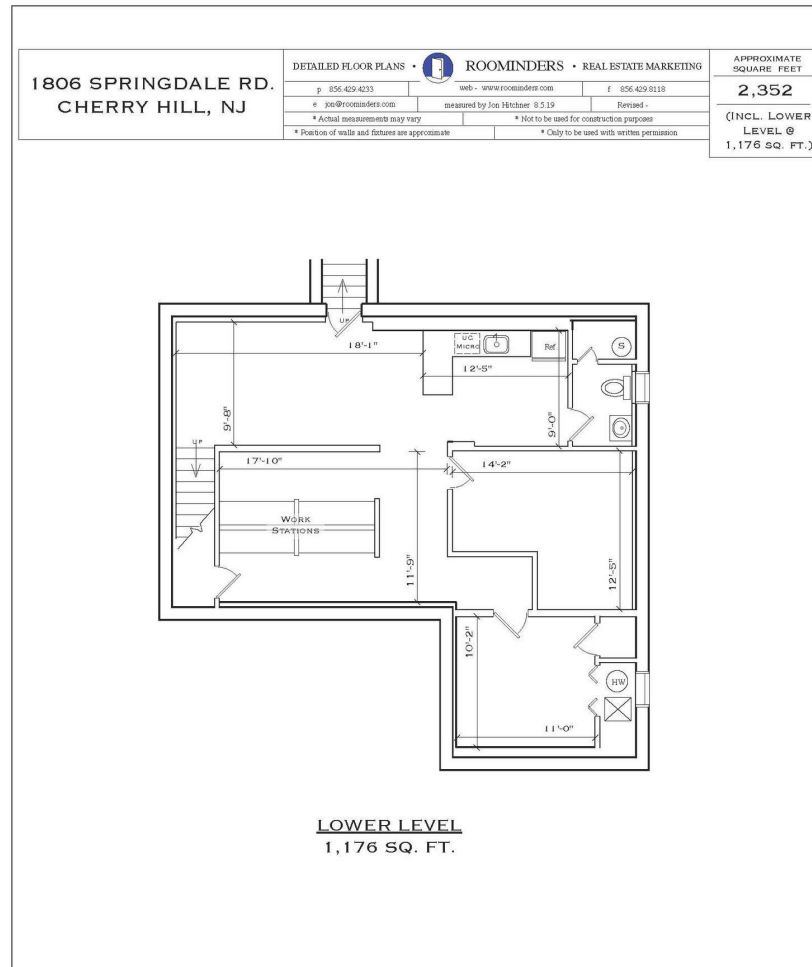
The foregoing information was furnished to us by sources which we deem to be reliable, but no warranty or representation is made as to the accuracy thereof. Subject to correction of errors, omissions, change of price, prior sale or withdrawal from market without notice.

FLOOR PLANS



The foregoing information was furnished to us by sources which we deem to be reliable, but no warranty or representation is made as to the accuracy thereof. Subject to correction of errors, omissions, change of price, prior sale or withdrawal from market without notice.

FLOOR PLANS



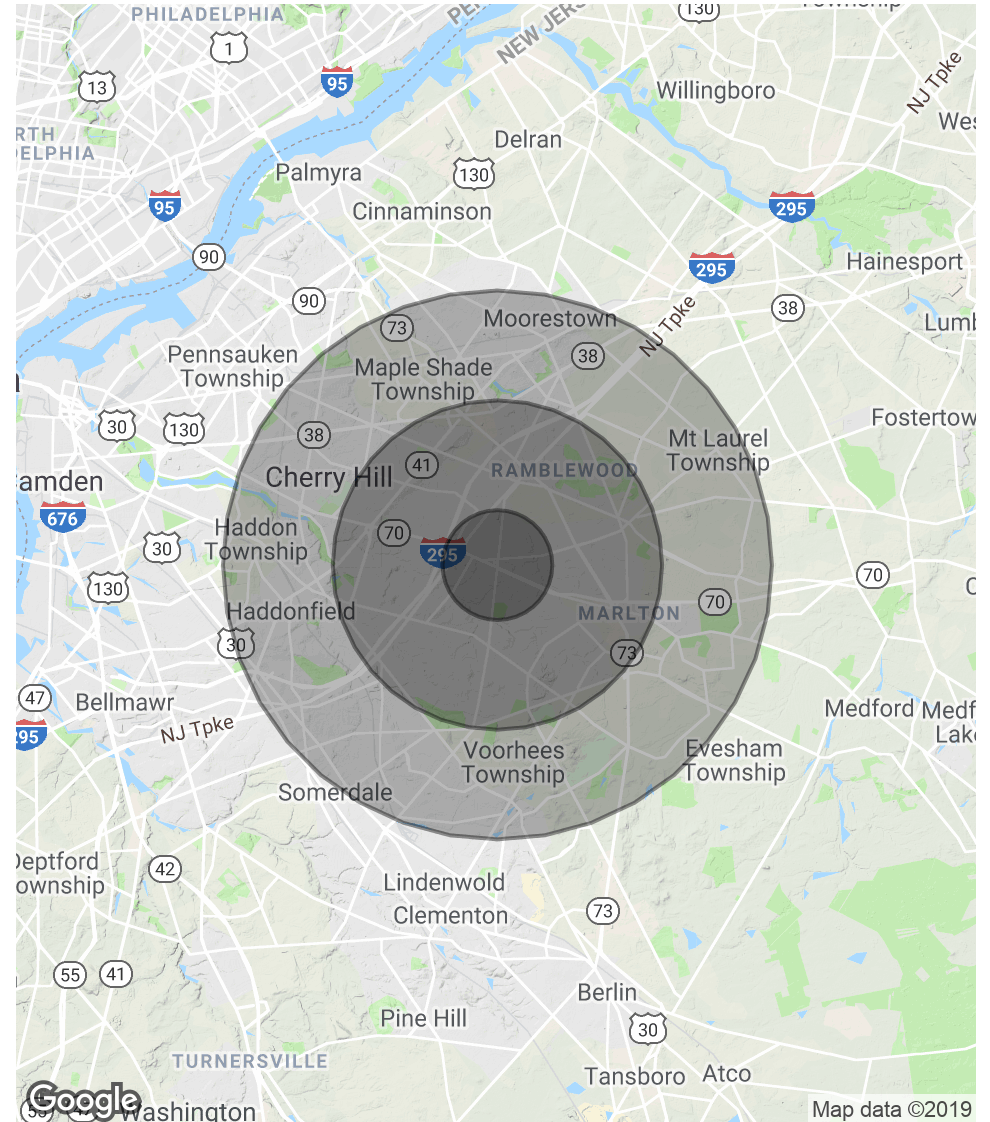
The foregoing information was furnished to us by sources which we deem to be reliable, but no warranty or representation is made as to the accuracy thereof. Subject to correction of errors, omissions, change of price, prior sale or withdrawal from market without notice.

DEMOGRAPHICS MAP & REPORT

| POPULATION | 1 MILE | 3 MILES | 5 MILES |
|---------------------|--------|---------|---------|
| Total Population | 7,767 | 79,168 | 219,479 |
| Median age | 42.0 | 42.6 | 42.0 |
| Median age (Male) | 39.7 | 41.1 | 40.5 |
| Median age (Female) | 44.2 | 44.4 | 43.6 |

| HOUSEHOLDS & INCOME | 1 MILE | 3 MILES | 5 MILES |
|---------------------|-----------|-----------|-----------|
| Total households | 2,726 | 29,648 | 84,641 |
| # of persons per HH | 2.8 | 2.7 | 2.6 |
| Average HH income | \$130,102 | \$113,073 | \$101,928 |
| Average house value | \$341,524 | \$336,109 | \$329,531 |

* Demographic data derived from 2010 US Census



The foregoing information was furnished to us by sources which we deem to be reliable, but no warranty or representation is made as to the accuracy thereof. Subject to correction of errors, omissions, change of price, prior sale or withdrawal from market without notice.