



1.588 ACRE DEVELOPMENT OPPORTUNITY AVAILABLE FOR SALE



1125 S. BLACK HORSE PIKE | BLACKWOOD, NJ



Wolf Commercial Real Estate  
[www.WolfCRE.com](http://www.WolfCRE.com)





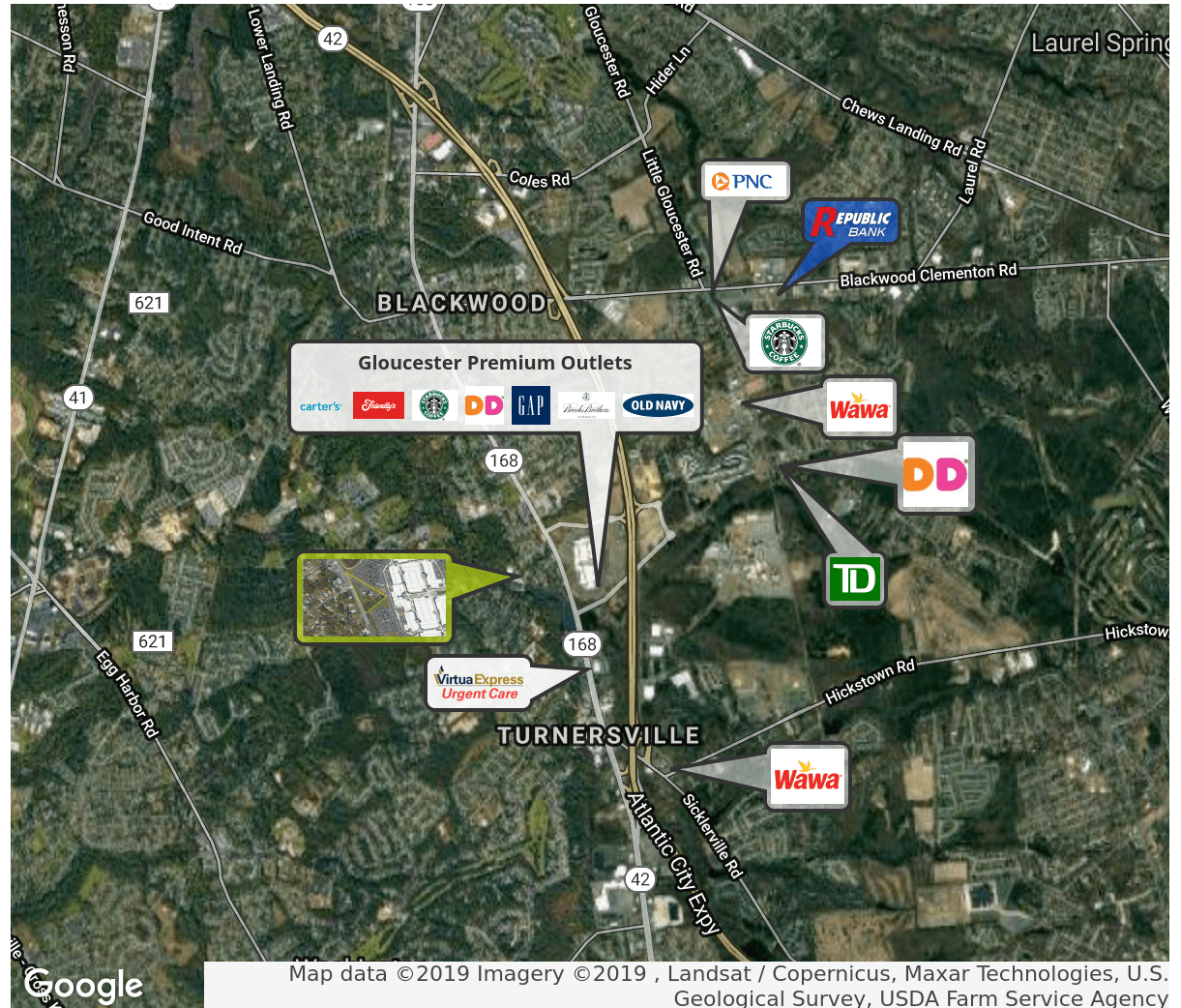
## PROPERTY DESCRIPTION

- Location** 1125 S Black Horse Pike  
Blackwood, NJ 08012
- Size / SF Available** +/-4,600 SF Former School Building  
Situated on +/-1.588 Acre Site
- Sale Price** \$375,000
- Property / Area Description**
- Former school building situated on +/-1.588 acres
  - Highly visible site adjacent to Gloucester Premium Outlets
  - Conveniently located with easy access to Philadelphia & Atlantic City via Route 42
  - Convenient access to area shopping, hotels, and restaurants

## Contact Us

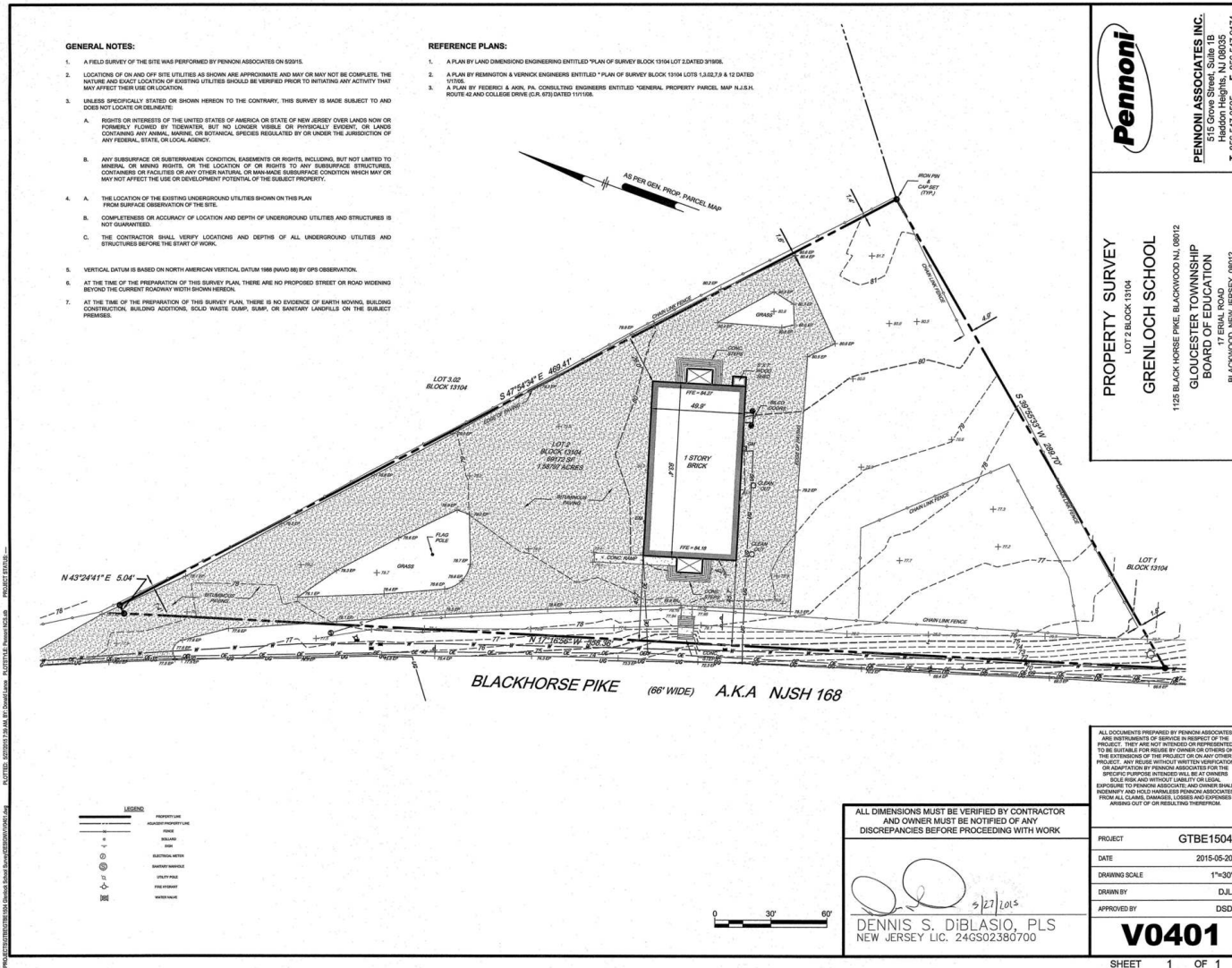
Brian Goren  
Senior Advisor & Facilities Manager  
410.371.2208  
brian.goren@wolfcre.com

Jason Wolf  
Managing Principal  
215.588.8800  
jason.wolf@wolfcre.com



follow us:    

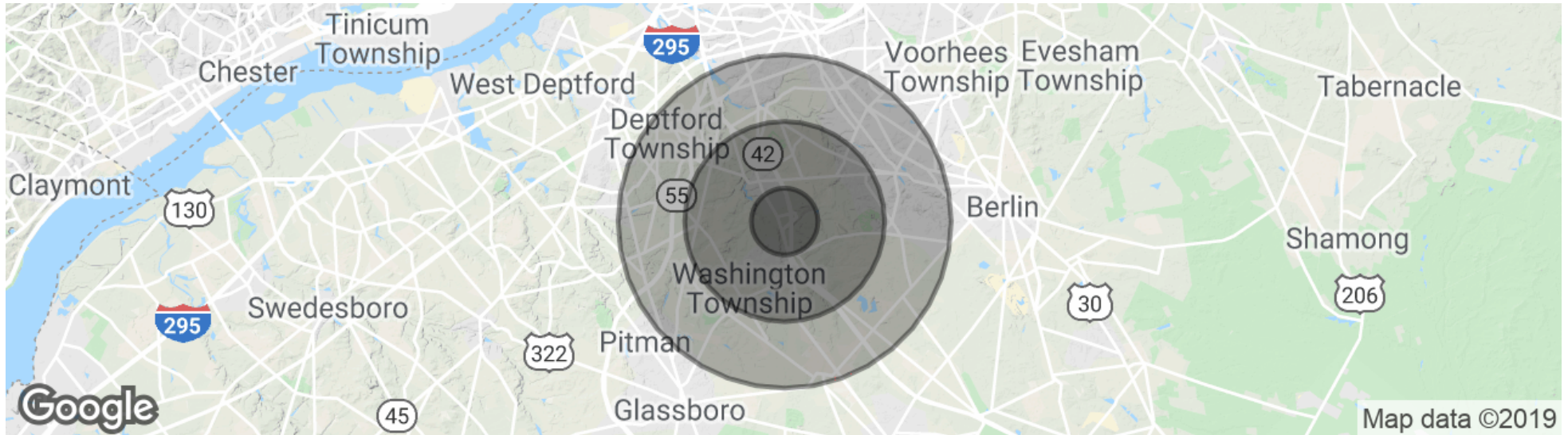
The foregoing information was furnished to us by sources which we deem to be reliable, but no warranty or representation is made as to the accuracy thereof. Subject to correction of errors, omissions, change of price, prior sale or withdrawal from market without notice.



The foregoing information was furnished to us by sources which we deem to be reliable, but no warranty or representation is made as to the accuracy thereof. Subject to correction of errors, omissions, change of price, prior sale or withdrawal from market without notice.



## DEMOGRAPHICS MAP & REPORT



POPULATION	1 MILE	3 MILES	5 MILES
Total Population	6,629	70,521	204,488
Median age	34.8	37.3	37.3
Median age (Male)	32.6	35.8	35.9
Median age (Female)	36.0	38.4	38.3
HOUSEHOLDS & INCOME	1 MILE	3 MILES	5 MILES
Total households	2,217	25,737	75,057
# of persons per HH	3.0	2.7	2.7
Average HH income	\$83,346	\$81,775	\$79,492
Average house value	\$271,042	\$265,583	\$247,625

\* Demographic data derived from 2010 US Census



The foregoing information was furnished to us by sources which we deem to be reliable, but no warranty or representation is made as to the accuracy thereof. Subject to correction of errors, omissions, change of price, prior sale or withdrawal from market without notice.