

4th ANNUAL WCRE CELEBRITY CHARITY HOCKEY GAME 2019

WCRE and **The Philadelphia Flyers Alumni** have teamed up to raise money for local charities that support OUR LOCAL COMMUNITY EVERY SINGLE DAY! Come out and cheer your friends and co-workers on as they hit the ice to raise money and support the charities below! After watching the game, join the teams for fun, food, raffle, silent auction and autograph/photo opportunities at Victory Bar & Grill in Berlin, NJ!

Please respond by August 23, 2019.



Sponsorship Opportunities - Please respond by 8/23/2019

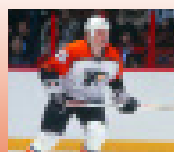
- \$2,250 **Jersey Sponsor - Logo above or below Jersey # (Only Three Available)** *\$1,850 tax deductible
(Includes: 4 tickets, rink introduction, rink placement of corporate banner, logo on WCRE rink banner, prominent logo display at dinner and full page ad)
- \$1,750 **Jersey Sponsor - Logo on Jersey Sleeves (Only Two Available)** *\$1,500 tax deductible
(Includes: 4 tickets, rink placement of corporate banner, logo on WCRE rink banner, prominent logo display at dinner and full page ad)
- \$2,000 **Game Opening Puck Drop (Only One Available)** *\$1,500 tax deductible
(Includes: 4 tickets, center ice introduction & puck drop, rink placement of corporate banner, logo on WCRE rink banner, prominent logo display at dinner and full page ad)
- \$1,000 **Guffaw Sponsor** *\$750 tax deductible
(Includes: 4 tickets, rink placement of corporate banner, logo on WCRE rink banner, prominent logo display at dinner and full page ad)
- \$750 **Rink & Dinner Sponsor** *\$525 tax deductible
(Includes 4 tickets and rink placement of corporate banner, logo on WCRE rink banner, prominent logo display at dinner and 1/2 page ad)
- \$500 **Dinner Sponsor** *\$325 tax deductible
(Includes 2 tickets and prominent logo display at dinner - entrance & tables and 1/2 pg ad)

Program & Autograph Ad Book

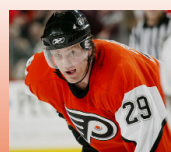
- \$550 **Full page inside cover ad (7.75" x 10.5") Only 3 available!** *\$425 tax deductible
- \$425 **Full page ad (7.75" x 10.5")** *\$300 tax deductible
- \$300 **Half page ad (7.75" x 5.25")** *\$200 tax deductible
- \$175 **Quarter page ad (3.75" x 5.25")** *\$100 tax deductible

*Ads can be color or b/w. Please submit high resolution jpgs, pdfs or eps files to stephanie.carroll@wolfcre.com

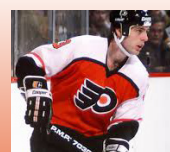
Hockey Legends



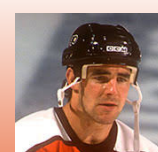
Brian Propp



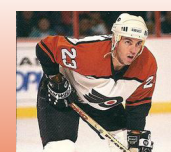
Todd Fedoruk



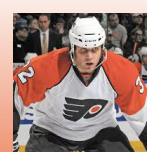
Doug Crossman



John LeClair**
(Schedule Permitting)



Andre Faust



Riley Cote



Lou Nolan
Event Emcee



Kerry Fraser
Game Referee

Saturday, September 14th 5pm

Game Time & Dinner Information

GAME TIME:	5:00-7:00 pm
GAME LOCATION:	Voorhees Skate Zone 601 Laurel Oak Rd, Voorhees Township, NJ 08043
DINNER TIME:	7:30-10:00 pm
DINNER LOCATION:	Victory Bar & Grill 795 Route 73, West Berlin, NJ 08091

Tickets

(Tickets include game & dinner (buffet, wine, beer & soda))

ADULT:	\$45.00 per person *\$30 tax deductible
CHILDREN (12 & UNDER):	\$20.00 per person *\$10 tax deductible
Game Only	\$15.00

On-Line ordering coming soon!

By Check: **WCRE Foundation**
c/o Wolf Commercial Real Estate
Attn: Tammi Coppinger
951 Rt 73 North, Suite D
Marlton, NJ 08053
Checks made payable to: WCRE Foundation

At the door: Cash & check only

4th ANNUAL WCRE CELEBRITY CHARITY HOCKEY GAME 2019

WCRE'S COMMUNITY COMMITMENT

Southern New Jersey and the Philadelphia region mean so much more to Wolf Commercial Real Estate (WCRE) than a place to do business. It's our home and our community. Our roots are here, and we are passionately committed to the health, well-being, and success of the people here. That is why WCRE encourages our staff to volunteer and support charitable causes. Currently we support Bancroft, CARES Institute at Rowan University, the American Cancer Society, Susan G. Komen Foundation of Philadelphia, Samaritan Healthcare & Hospice, the Jewish Federation of Southern New Jersey and the Flyers Alumni Association.



The CARES Institute provides an array of medical and mental health services to children in Southern New Jersey who have experienced abuse, neglect, and violence. The institute supports the overall health and well-being of children and families. The pediatricians, psychologists, psychiatrists, and social workers at the CARES Institute also provide training and education to medical, mental health, child protection and law enforcement professionals.



The Jewish Federation of Southern New Jersey encompasses Camden, Burlington, and Gloucester Counties, and is the third largest Federation in the state of New Jersey. It serves a Jewish population of approximately 50,000 through a network of local, national and international agencies, and provides or supports a wide range of social services to people of all backgrounds. These services include housing, food assistance, counseling, and support for senior citizens and those with disabilities. The Federation is also a leader in Jewish culture and education.



Bancroft is a leading regional nonprofit provider of specialized services for individuals with autism, other intellectual or developmental disabilities and those in need of neurological rehabilitation. Through its innovative programs supporting people throughout different stages in life, Bancroft offers a comprehensive range of services aimed at unlocking the full potential in each person and meeting his or her changing needs. Programming includes special education, vocational training and supported employment, structured day programs, residential treatment programs, community living programs, and behavioral supports. In 2018, Bancroft opened the Raymond & Joanne Welsh Campus in Mt. Laurel, NJ, for children's services, featuring the flagship Bancroft School and Lindens Center for Autism. The campus is the most progressive and expansive campus for children with special needs in the region.



For nearly 100 years the American Cancer Society has been saving lives and easing suffering caused by cancer. ACS funds research into treatment, prevention, and early detection, and provides a range of social services to patients and their families.



Nationwide, Komen will drastically reduce the current number of breast cancer deaths by 50% by 2026. Here at home, Komen Philadelphia focuses on reducing the number of late-stage breast cancer diagnoses in our community while continuing to provide the education, resources, access to services, survivor support and research funding that have grown the size of the local survivor family over the past 25 years.

The Susan G. Komen foundation of Philadelphia serves 15 counties in the tri-state area, including: Adams, Berks, Bucks, Chester, Delaware, Lancaster, Lebanon, Lehigh, Montgomery, Philadelphia, and York Counties (Pennsylvania), Camden County (New Jersey) and Kent, New Castle, and Sussex Counties (Delaware).



Since 1980, Samaritan Healthcare & Hospice has been providing comfort, support, and dignity to people in Atlantic, Burlington, Camden, Gloucester, and Mercer counties who are coping with the pain, symptoms, and stress of serious illness and/or grief.



The Flyers Alumni Association brings together Flyers players from every era of Flyers Hockey, uniting for the common goal of giving back to the Delaware Valley Community. In February 2016, the Flyers Alumni announced its biggest initiative to date. The Flyers Alumni announced that they would honor Mr. Snider by building a new ice rink. Together working with Snider Youth Hockey, the Alumni pledged to raise \$2 million dollars towards the construction and completion of the Edward M. Snider Ice Rink. There is no better way for us to say "Thank You" to the man that did so much for so many.

Weren't there last year?
This is what you missed...



The WCRE Foundation is managed by the Community Foundation of South Jersey. www.communityfoundationsj.org

follow us:



www.WolfCRE.com

Marlton | Philadelphia | King of Prussia