

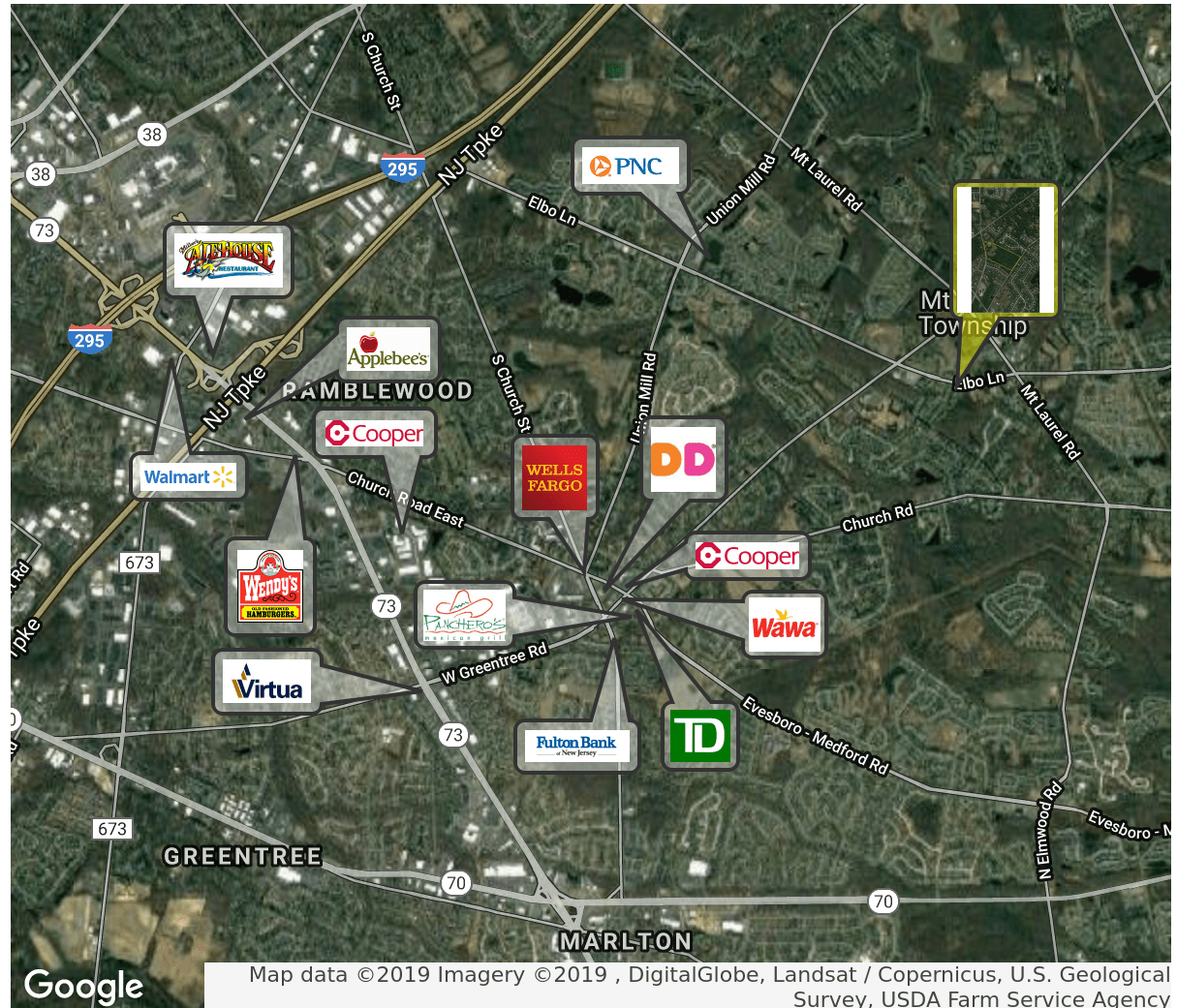
249 ELBO LANE | MOUNT LAUREL, NJ

PROPERTY DESCRIPTION

- Location** 249 Elbo Lane
Mount Laurel, NJ 08054
- Acres Available** +/-26 Acres
- Sale Price** \$2,250,000
- Property / Area Description**
- 26 Acres zoned for new development in Mount Laurel Township
 - Prime land for new single family housing opportunity
 - Surrounded by newer, beautiful existing single family homes
 - Located within sought after Mount Laurel/Lenape Regional School Districts
 - Dual entry points from Cemetery Road and Elbo Lane
 - Close proximity to multiple retail shops, restaurants, professional businesses and residential developments
 - Easy access to Route 73, I-295, Route 38 and the New Jersey Turnpike

Contact Us

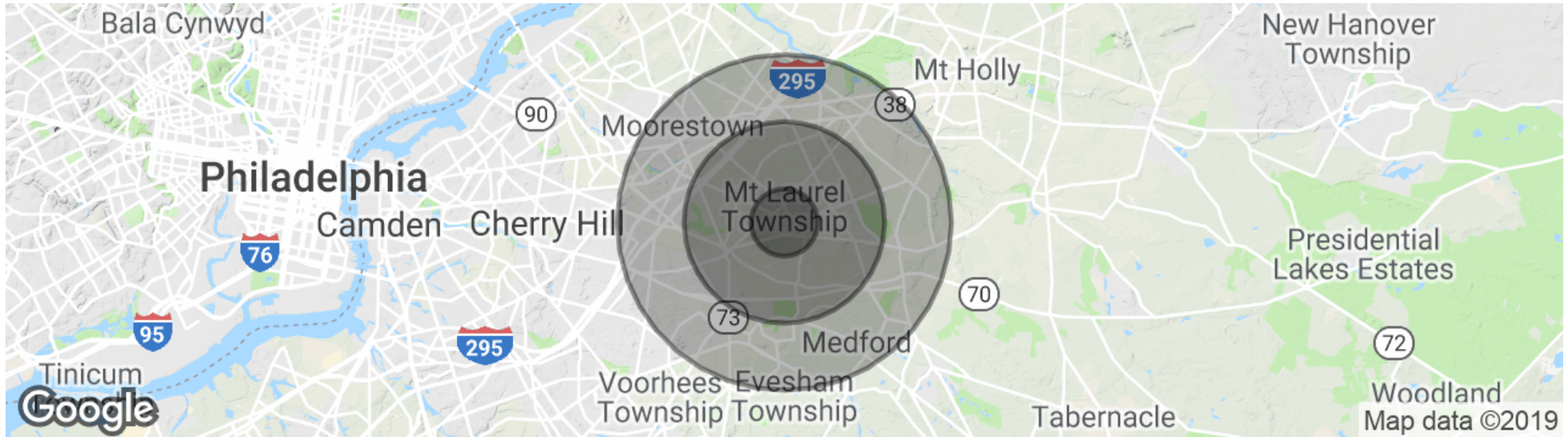
Ryan Barikian Senior Associate 856.857.6307 ryan.barikian@wolfcre.com	Christopher Henderson Principal & Vice President 856.857.6337 chris.henderson@wolfcre.com
--	--



follow us:    

The foregoing information was furnished to us by sources which we deem to be reliable, but no warranty or representation is made as to the accuracy thereof. Subject to correction of errors, omissions, change of price, prior sale or withdrawal from market without notice.

DEMOGRAPHICS MAP & REPORT



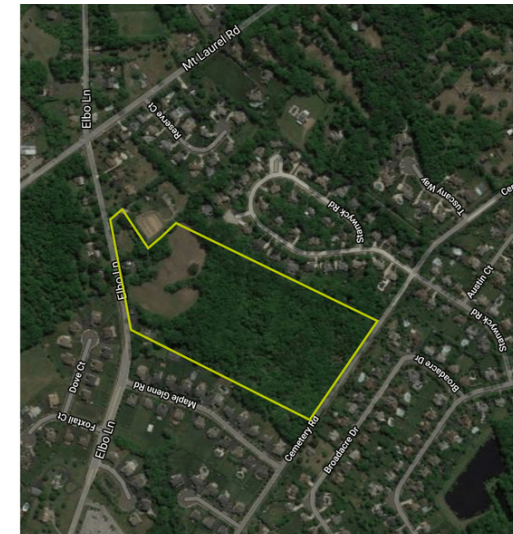
POPULATION

	1 MILE	3 MILES	5 MILES
Total population	5,125	54,582	134,644
Median age	47.9	41.0	41.0
Median age (Male)	43.6	39.3	39.6
Median age (Female)	50.6	42.4	42.5

HOUSEHOLDS & INCOME

	1 MILE	3 MILES	5 MILES
Total households	2,088	21,196	51,904
# of persons per HH	2.5	2.6	2.6
Average HH income	\$116,691	\$106,254	\$108,008
Average house value	\$394,284	\$338,863	\$344,463

* Demographic data derived from 2010 US Census



The foregoing information was furnished to us by sources which we deem to be reliable, but no warranty or representation is made as to the accuracy thereof. Subject to correction of errors, omissions, change of price, prior sale or withdrawal from market without notice.