



CHERRY HILL DEVELOPMENT OPPORTUNITY AVAILABLE FOR SALE OR LEASE



1951 HADDONFIELD BERLIN ROAD | CHERRY HILL, NJ



Wolf Commercial Real Estate
www.WolfCRE.com



PROPERTY DESCRIPTION

- Location** 1951 Haddonfield Berlin Road
Cherry Hill, NJ 08003
- Acres Available** 1.3 acres
- Pricing** \$440,000
- Property / Area Description**
- Development plans for a +/-12,500 two story office building
 - Signage directly on Haddonfield Berlin Road
 - Directly Across from Woodcrest Country Club
 - Convenient access to Route I-295 and the New Jersey Turnpike
 - Close proximity to multiple retail shops, restaurants, professional businesses and residential developments
 - Property has commercial overlay zoning (Non-Residential) Permitted uses are medical, professional, retail sales (including alcohol package goods), banking, restaurants, fast food, funeral homes and personal services

Contact Us

Ryan Barikian
Senior Associate
856.857.6307
ryan.barikian@wolfcre.com

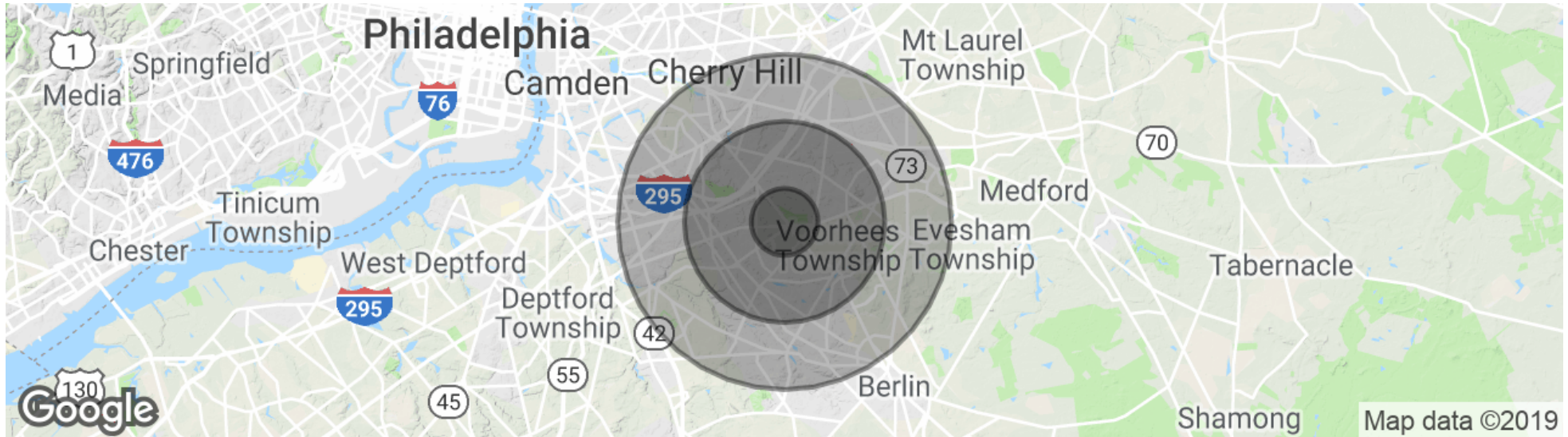
Michael Scanzano
Associate
856.857.6386
mike.scanzano@wolfcre.com



follow us:    

The foregoing information was furnished to us by sources which we deem to be reliable, but no warranty or representation is made as to the accuracy thereof. Subject to correction of errors, omissions, change of price, prior sale or withdrawal from market without notice.

DEMOGRAPHICS MAP & REPORT



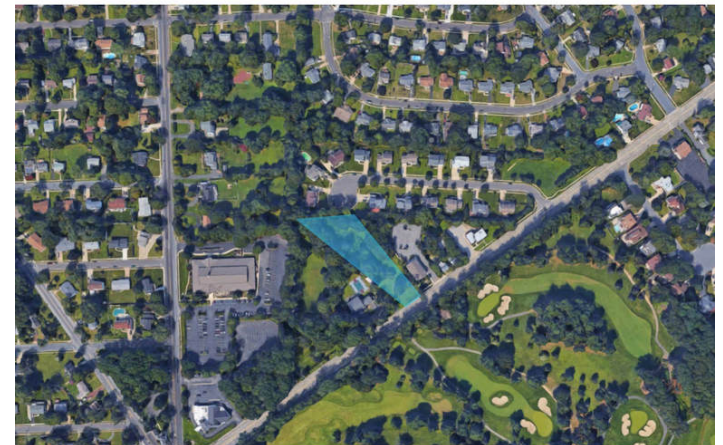
POPULATION

	1 MILE	3 MILES	5 MILES
Total population	11,214	81,720	243,854
Median age	39.5	41.4	40.5
Median age (Male)	39.1	40.2	39.2
Median age (Female)	39.9	42.5	41.7

HOUSEHOLDS & INCOME

	1 MILE	3 MILES	5 MILES
Total households	4,599	31,864	93,563
# of persons per HH	2.4	2.6	2.6
Average HH income	\$98,173	\$101,811	\$94,226
Average house value	\$350,802	\$299,318	\$309,291

* Demographic data derived from 2010 US Census



The foregoing information was furnished to us by sources which we deem to be reliable, but no warranty or representation is made as to the accuracy thereof. Subject to correction of errors, omissions, change of price, prior sale or withdrawal from market without notice.