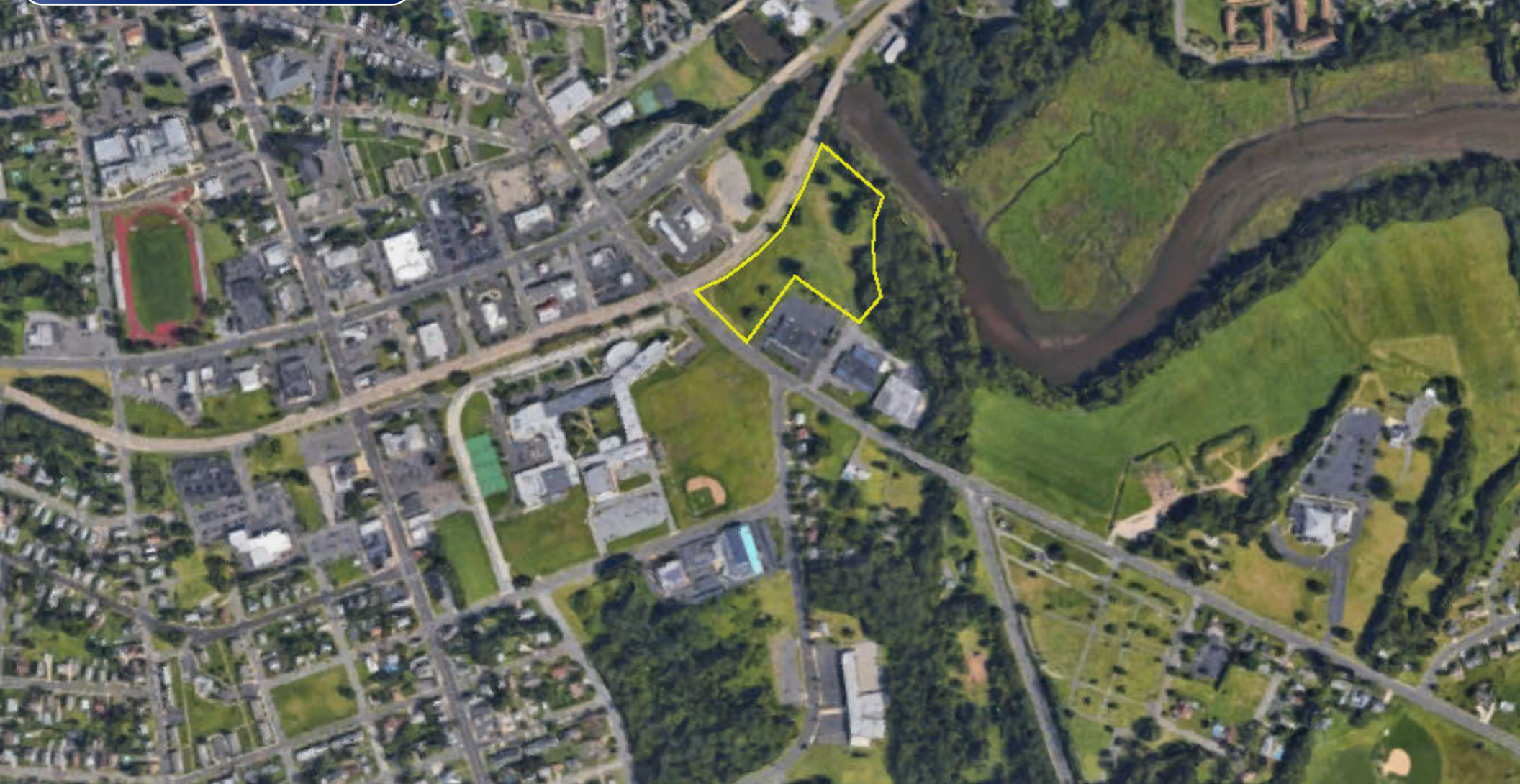




HIGHLY VISIBLE BURLINGTON LAND SITE AVAILABLE FOR SALE



ROUTE 130 NORTH & JACKSONVILLE ROAD | BURLINGTON, NJ



Wolf Commercial Real Estate
www.WolfCRE.com



PROPERTY DESCRIPTION

- Location** Route 130 & Jacksonville Road
Burlington, NJ
- Acres Available** +/- 9 Acre Site
- Sale Price** \$675,000
- Property / Area Description**
- 5 buildable acres on +/-9 acre site
 - Corner property at intersection of Jacksonville Road and Route 130 North
 - Located within Redevelopment zone
 - Ideal for a variety of retail, office, recreation, education and medical uses
 - Direct access to Route 130 and minutes to I-295, New Jersey Turnpike and Burlington-Bristol Bridge
 - Easy access to Burlington County, NJ and Bucks County, PA markets
 - Busy commercial corridor along Route 130
 - Close to schools, churches, and historic downtown Burlington City, New Jersey

Contact Us

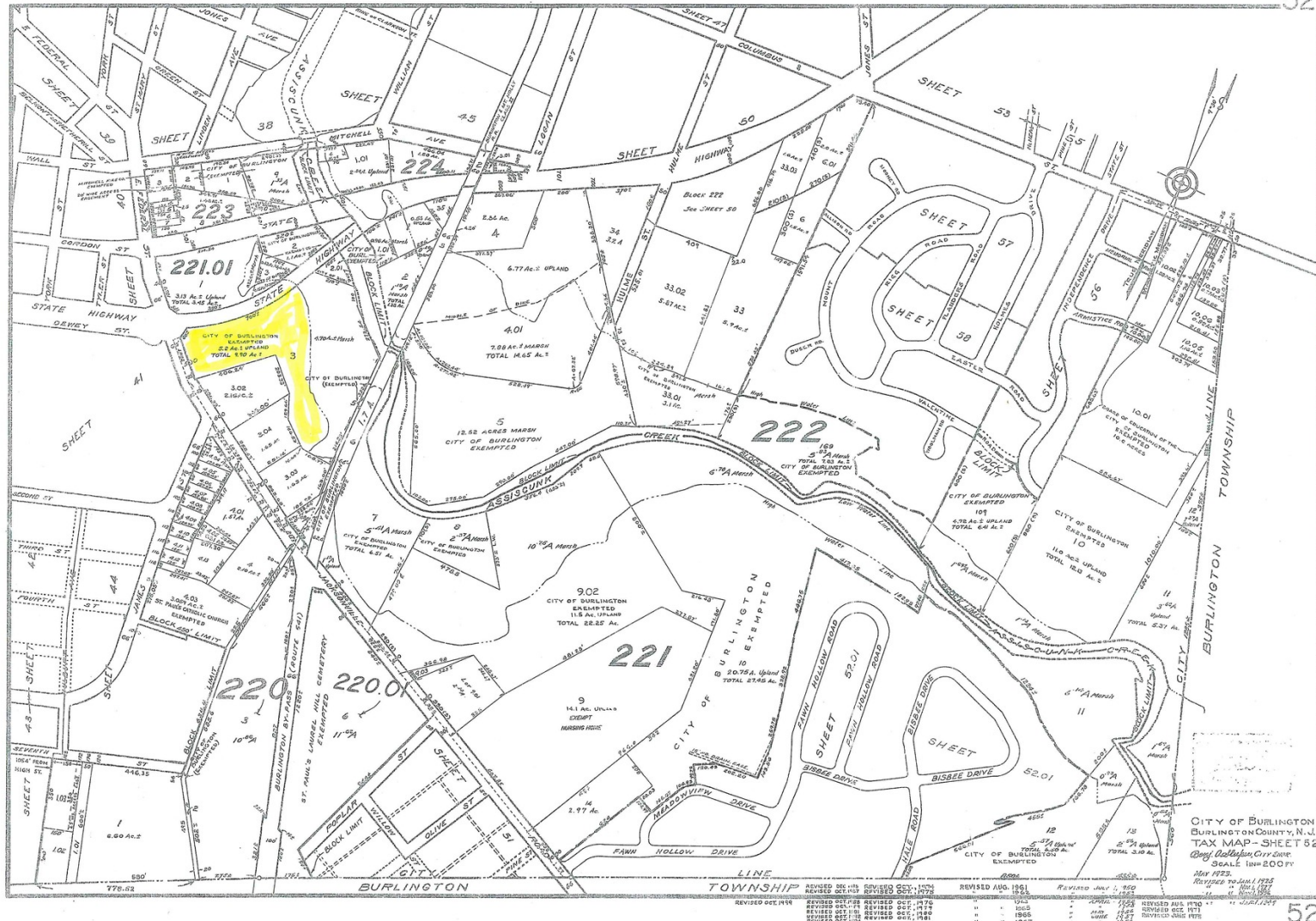
Kevin Coleman
Chief Sales Officer &
Executive Vice President
856.857.6339
kevin.coleman@wolfcre.com

Jason Wolf
Managing Principal
856.857.6301
jason.wolf@wolfcre.com



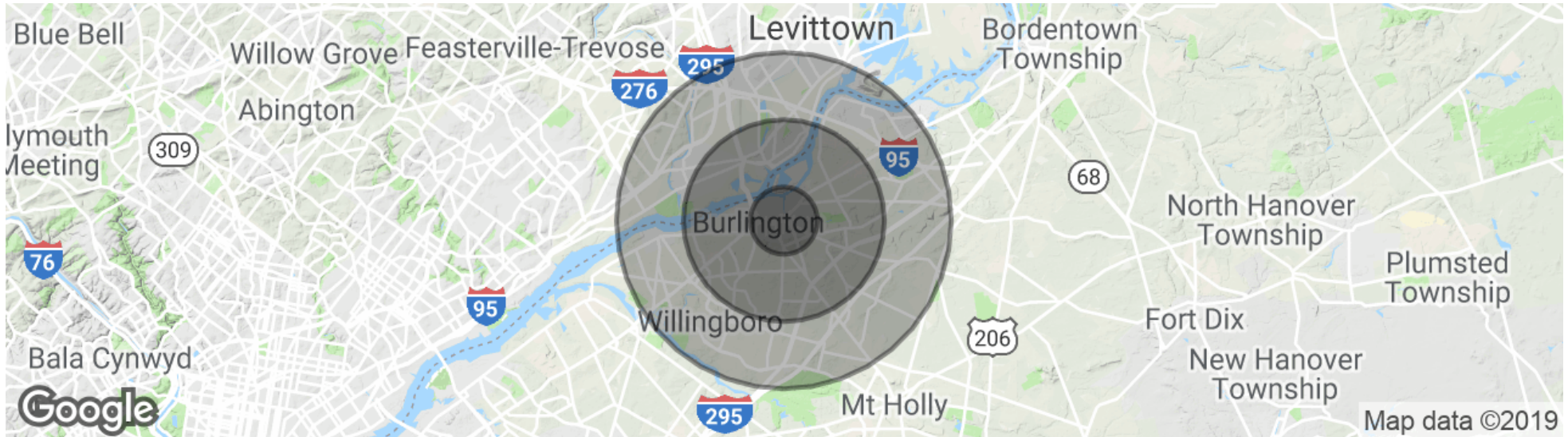
follow us:    

TAX MAP



The foregoing information was furnished to us by sources which we deem to be reliable, but no warranty or representation is made as to the accuracy thereof. Subject to correction of errors, omissions, change of price, prior sale or withdrawal from market without notice.

DEMOGRAPHICS MAP & REPORT



POPULATION

	1 MILE	3 MILES	5 MILES
Total population	9,057	64,512	175,285
Median age	38.9	38.6	38.9
Median age (Male)	35.5	37.5	37.9
Median age (Female)	39.6	39.2	39.9

HOUSEHOLDS & INCOME

	1 MILE	3 MILES	5 MILES
Total households	3,611	24,219	65,266
# of persons per HH	2.5	2.7	2.7
Average HH income	\$61,666	\$70,859	\$70,984
Average house value	\$249,264	\$267,923	\$253,587

* Demographic data derived from 2010 US Census



The foregoing information was furnished to us by sources which we deem to be reliable, but no warranty or representation is made as to the accuracy thereof. Subject to correction of errors, omissions, change of price, prior sale or withdrawal from market without notice.