



PROFESSIONAL OFFICE CONDOMINIUMS AVAILABLE FOR SALE



701 WHITE HORSE ROAD | VOORHEES, NJ



Wolf Commercial Real Estate  
[www.WolfCRE.com](http://www.WolfCRE.com)



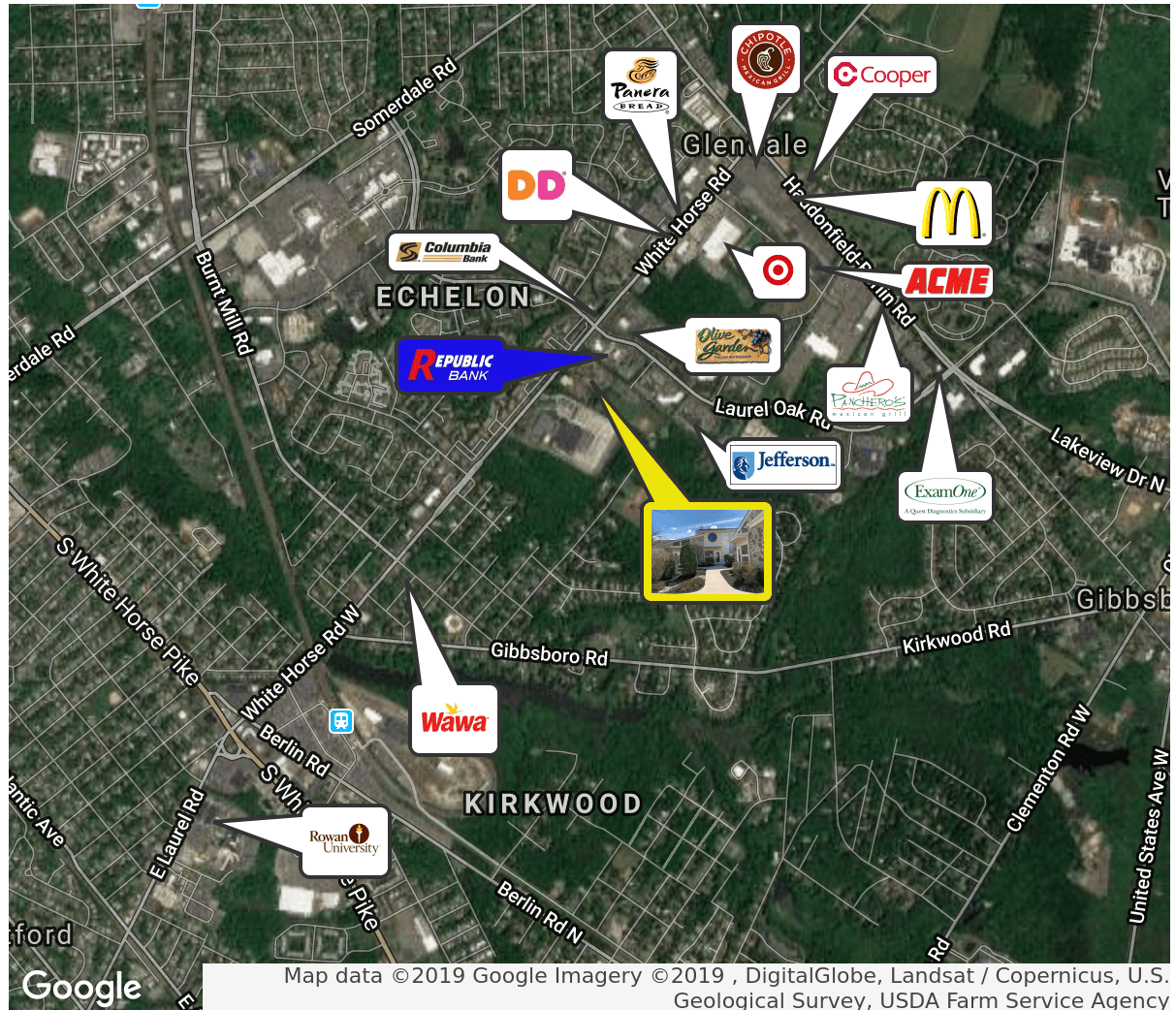


## PROPERTY DESCRIPTION

- Location** 701 White Horse Road  
Voorhees, NJ 08043
- Size / SF Available** Unit 3 – 2,752 SF Unit 4 – 2,144 SF
- Sale Price** Unit 3 – \$187,500 Unit 4 – \$137,500
- Property / Area Description**
- Two contiguous office condos available for sale (each unit can be sold individually or combined)
  - Ideal for medical or professional office users
  - Cathedral ceilings, private entrances
  - Well maintained and landscaped property
  - Parking ratio 4/1,000
  - Location is surrounded by some of the region's most prestigious retail, health care providers and corporate users
  - Property is positioned along White Horse Road within immediate access to Haddonfield Berlin Road (561)
  - Conveniently located within close proximity to I-295, Route 70 and the NJ Turnpike

## Contact Us

April Loomis  
Senior Associate  
856.857.6308  
april.loomis@wolfcre.com



follow us:    

The foregoing information was furnished to us by sources which we deem to be reliable, but no warranty or representation is made as to the accuracy thereof. Subject to correction of errors, omissions, change of price, prior sale or withdrawal from market without notice.

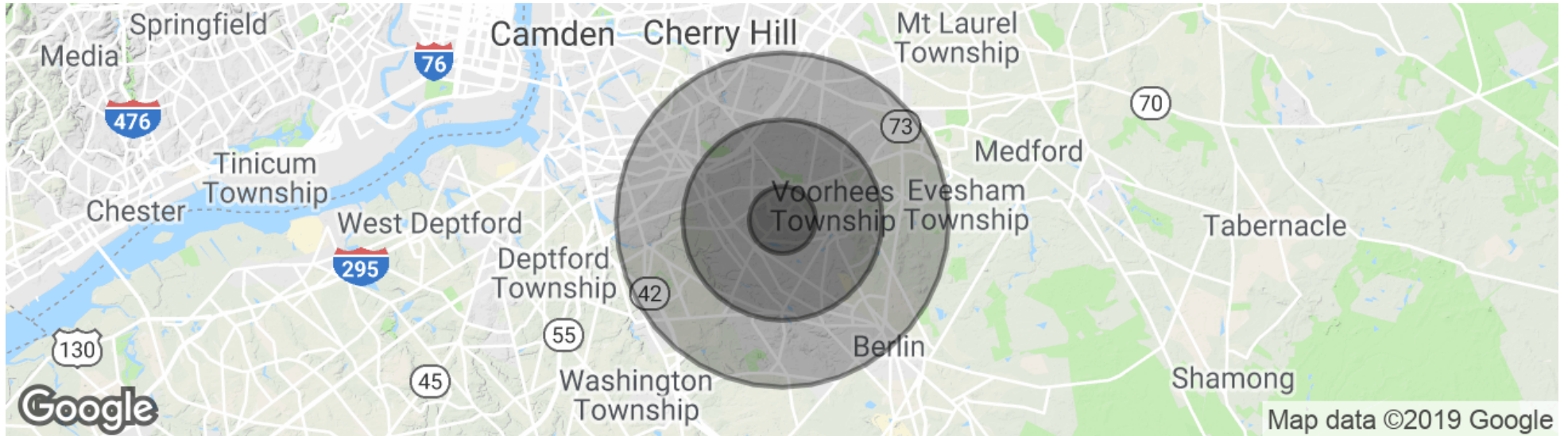
ADDITIONAL PHOTOS



The foregoing information was furnished to us by sources which we deem to be reliable, but no warranty or representation is made as to the accuracy thereof. Subject to correction of errors, omissions, change of price, prior sale or withdrawal from market without notice.



## DEMOGRAPHICS MAP & REPORT



### POPULATION

	1 MILE	3 MILES	5 MILES
Total population	9,812	86,381	227,345
Median age	40.1	39.6	39.8
Median age (Male)	38.6	38.6	38.6
Median age (Female)	40.9	40.4	40.9

### HOUSEHOLDS & INCOME

	1 MILE	3 MILES	5 MILES
Total households	4,386	34,146	86,839
# of persons per HH	2.2	2.5	2.6
Average HH income	\$84,907	\$87,759	\$93,018
Average house value	\$165,709	\$278,355	\$311,673

\* Demographic data derived from 2010 US Census



The foregoing information was furnished to us by sources which we deem to be reliable, but no warranty or representation is made as to the accuracy thereof. Subject to correction of errors, omissions, change of price, prior sale or withdrawal from market without notice.