



PROFESSIONAL ROUTE 70 CHERRY HILL OFFICE PROPERTY AVAILABLE FOR SALE



1847 WEST ROUTE 70 | CHERRY HILL, NJ



Wolf Commercial Real Estate
www.WolfCRE.com

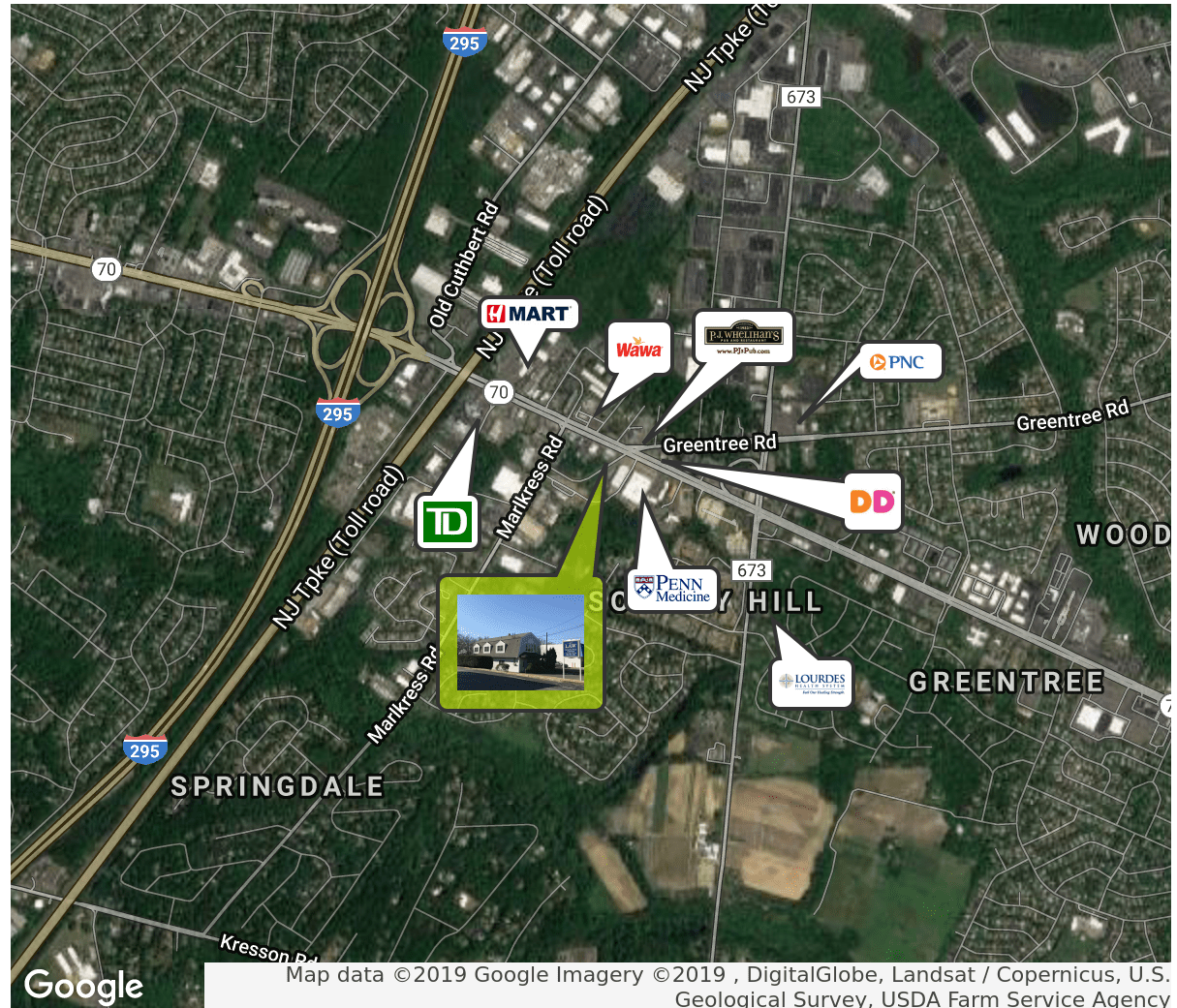


PROPERTY DESCRIPTION

Location	1847 West Route 70 Cherry Hill, NJ 08003
Size / SF Available	2,100 SF
Sale Price	\$345,700
Signage	Monument Signage available on Route 70
Property / Area Description	<ul style="list-style-type: none"> Freestanding two story office building for sale Located on highly traveled Route 70 in Cherry Hill, New Jersey Close Proximity to Route I-295 Monument Signage available on Route 70 20 parking spaces Ideal for a variety of professional uses (Attorney, Accountant, Insurance, Architect, etc.) Within close proximity to local shopping, restaurants and banks

Contact Us

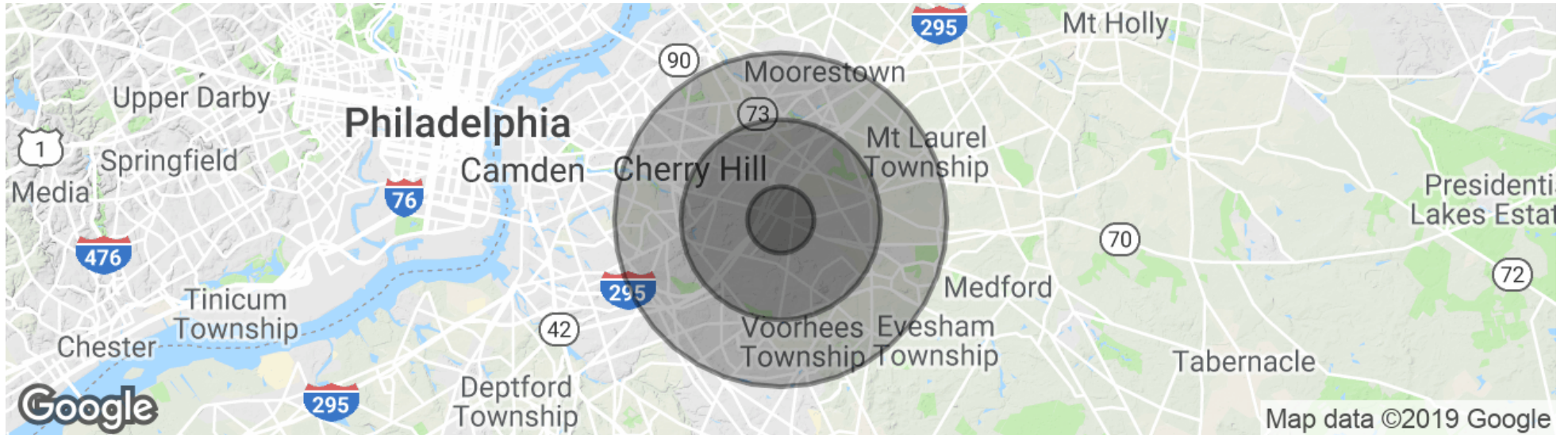
Ryan Barikian
Senior Associate
856.857.6307
ryan.barikian@wolfcre.com



follow us:    

The foregoing information was furnished to us by sources which we deem to be reliable, but no warranty or representation is made as to the accuracy thereof. Subject to correction of errors, omissions, change of price, prior sale or withdrawal from market without notice.

DEMOGRAPHICS MAP & REPORT



POPULATION

	1 MILE	3 MILES	5 MILES
Total population	7,965	82,646	224,595
Median age	42.1	42.5	41.9
Median age (Male)	39.4	40.9	40.5
Median age (Female)	44.9	44.4	43.5

HOUSEHOLDS & INCOME

	1 MILE	3 MILES	5 MILES
Total households	2,847	31,322	86,872
# of persons per HH	2.8	2.6	2.6
Average HH income	\$122,882	\$108,958	\$101,000
Average house value	\$327,159	\$326,780	\$323,886

* Demographic data derived from 2010 US Census



The foregoing information was furnished to us by sources which we deem to be reliable, but no warranty or representation is made as to the accuracy thereof. Subject to correction of errors, omissions, change of price, prior sale or withdrawal from market without notice.