



2733 NOTTINGHAM WAY | HAMILTON, NJ

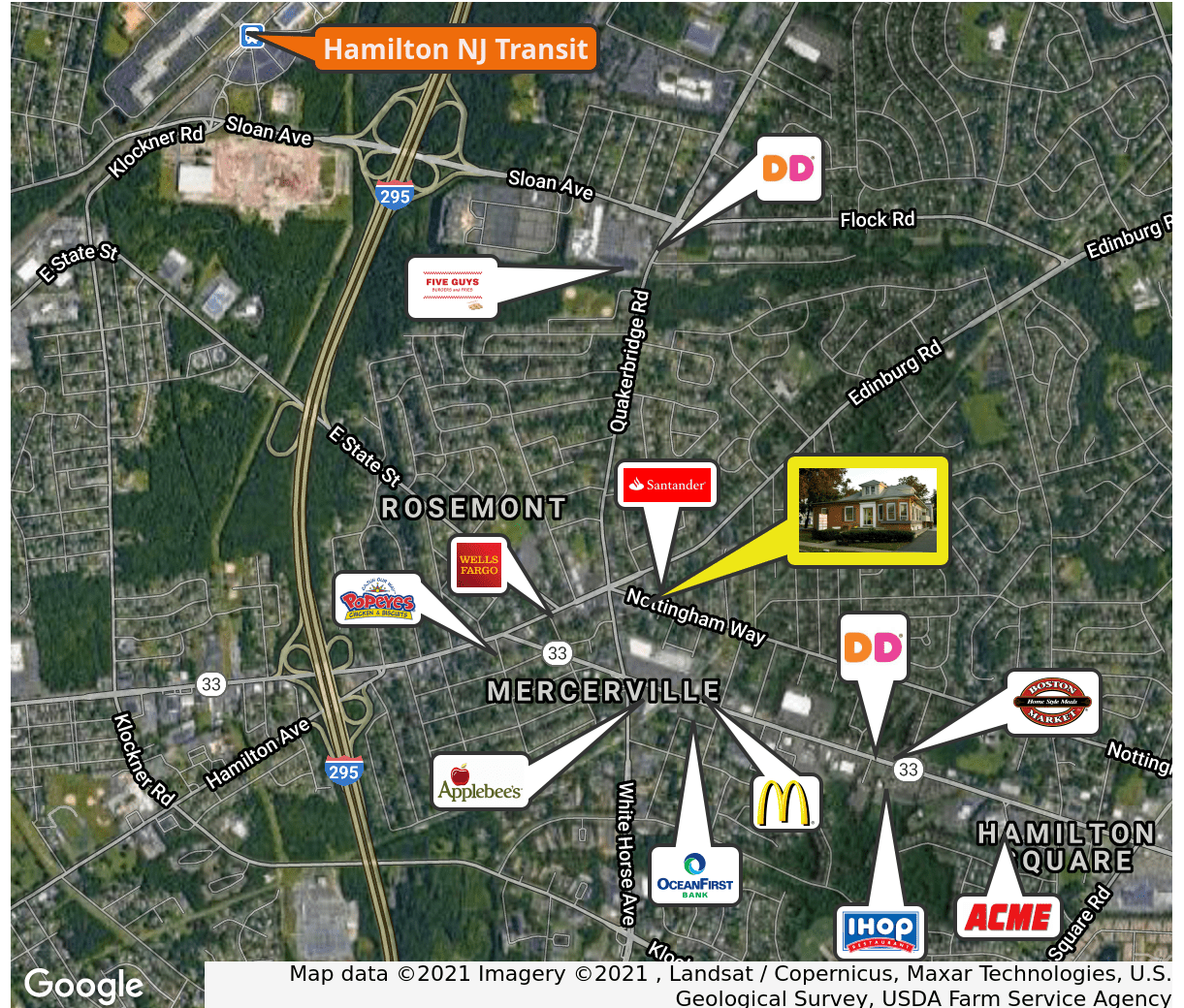


## PROPERTY DESCRIPTION

<b>Location</b>	2733 Nottingham Way Hamilton, NJ 08619
<b>SF Available Lease</b>	9 Available Office Suites: Ranging from +/- 185 SF - +/- 585 SF Multiple Opportunities
<b>Lease Price</b>	\$17.50/SF plus Tenant Electricity
<b>Occupancy</b>	Available for immediate occupancy
<b>Signage</b>	Monument Signage
<b>Property / Area Description</b>	<ul style="list-style-type: none"> <li>Recently updated two-story office property</li> <li>Ideal for local professional users</li> <li>Flexible lease terms</li> <li>Conveniently located just off of I-295, 130, Route 33 and surrounded by retail and residential</li> <li>Within minutes from Hamilton Train Station and NJ Turnpike Exit 7A</li> </ul>

## Contact Us

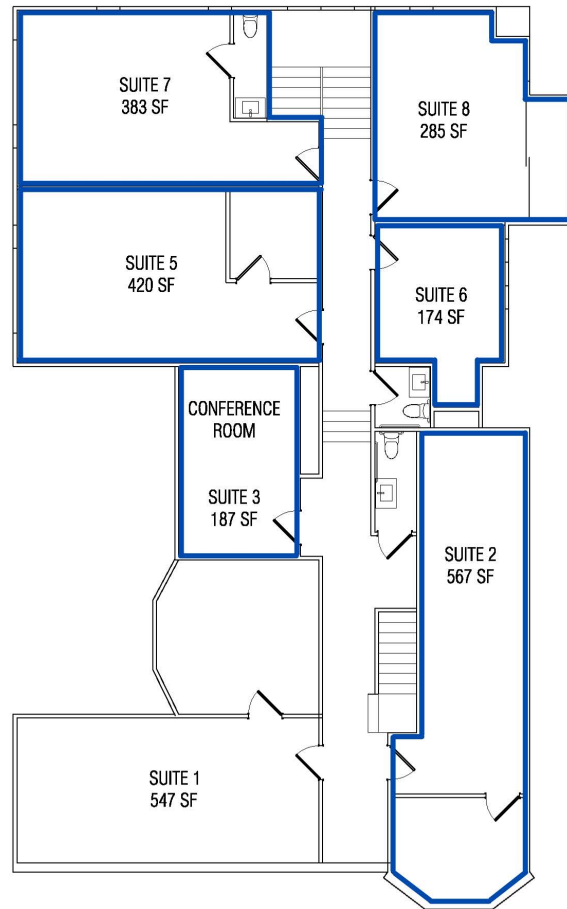
Kevin Coleman CSO & Executive VP 609.933.0680 kevin.coleman@wolfcre.com	Victor DeJesus Senior Associate 347.977.7987 victor.dejesus@wolfcre.com
--	--



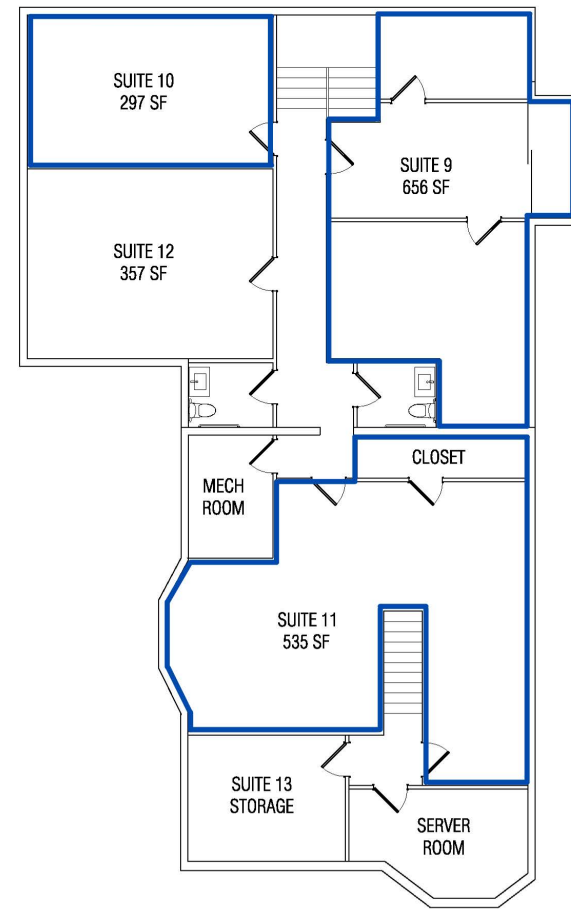
follow us:    

The foregoing information was furnished to us by sources which we deem to be reliable, but no warranty or representation is made as to the accuracy thereof. Subject to correction of errors, omissions, change of price, prior sale or withdrawal from market without notice.

FLOOR PLANS



FIRST FLOOR



BASEMENT

The foregoing information was furnished to us by sources which we deem to be reliable, but no warranty or representation is made as to the accuracy thereof. Subject to correction of errors, omissions, change of price, prior sale or withdrawal from market without notice.



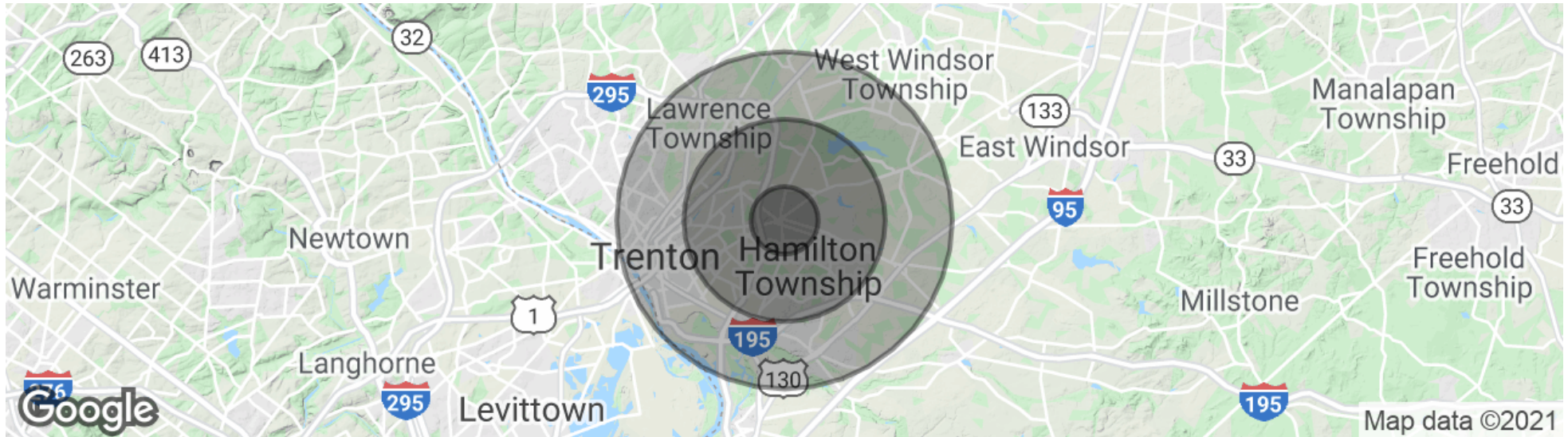
ADDITIONAL PHOTOS



The foregoing information was furnished to us by sources which we deem to be reliable, but no warranty or representation is made as to the accuracy thereof. Subject to correction of errors, omissions, change of price, prior sale or withdrawal from market without notice.



## DEMOGRAPHICS MAP & REPORT



### POPULATION

	1 MILE	3 MILES	5 MILES
Total population	8,233	74,070	213,076
Median age	43.5	41.9	37.8
Median age (Male)	41.2	40.2	36.4
Median age (Female)	45.7	43.2	38.9

### HOUSEHOLDS & INCOME

	1 MILE	3 MILES	5 MILES
Total households	2,979	28,230	75,097
# of persons per HH	2.8	2.6	2.8
Average HH income	\$89,458	\$85,119	\$80,988
Average house value	\$337,233	\$311,144	\$309,848

\* Demographic data derived from 2010 US Census



The foregoing information was furnished to us by sources which we deem to be reliable, but no warranty or representation is made as to the accuracy thereof. Subject to correction of errors, omissions, change of price, prior sale or withdrawal from market without notice.