



CHERRY HILL PROFESSIONAL OFFICE SPACE AVAILABLE FOR LEASE



496 NORTH KINGS HIGHWAY | CHERRY HILL, NJ



Wolf Commercial Real Estate
www.WolfCRE.com

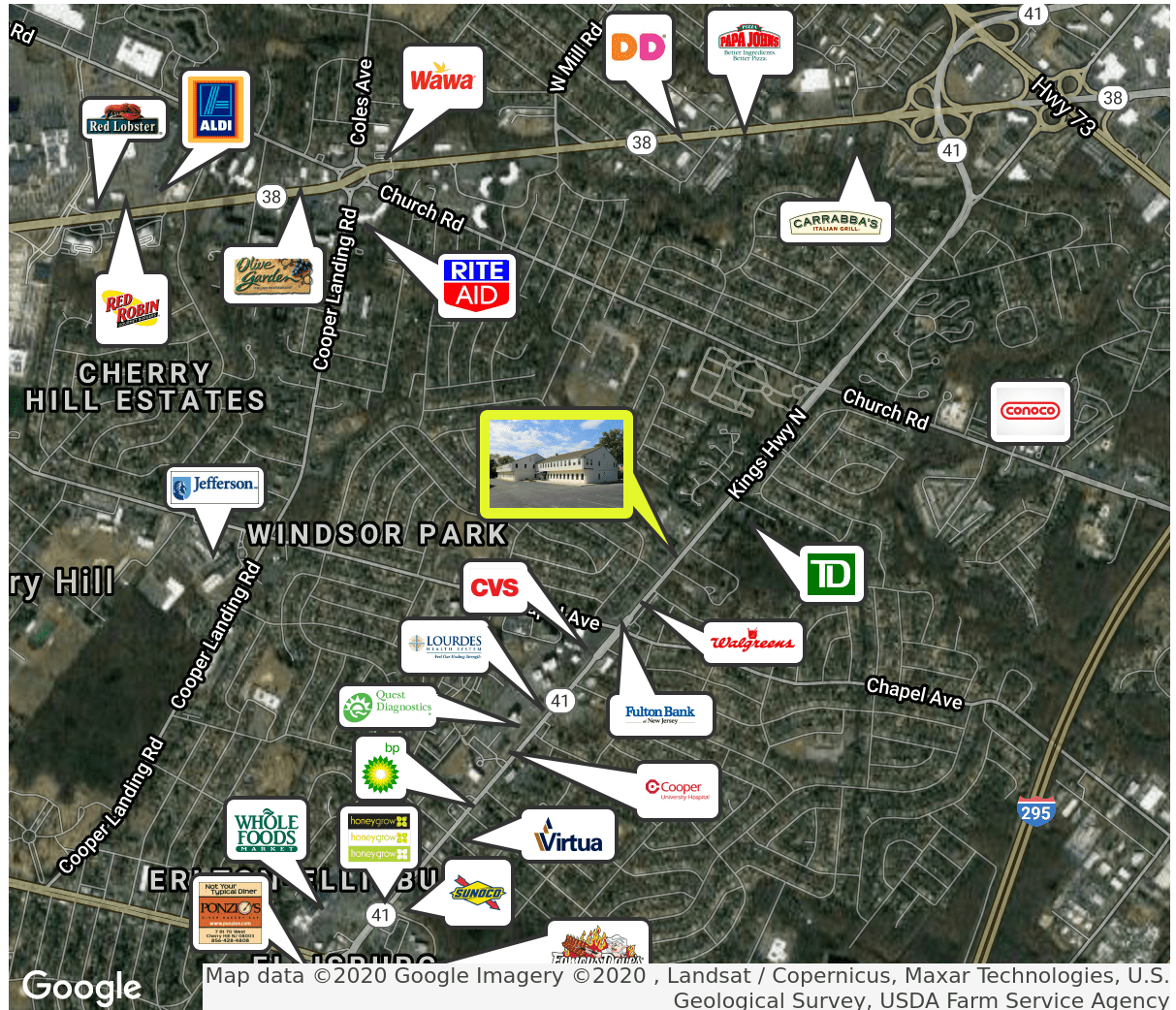


PROPERTY DESCRIPTION

- Location** 496 North Kings Highway
Cherry Hill, NJ 08034
- Size / SF Available** 2nd Floor: +/- 240 SF
- Lease Price** \$19.50/SF (Full service excluding janitorial service)
- Occupancy** Available for immediate occupancy
- Property / Area Description**
- Located in the heart of Cherry Hill on highly traveled North Kings Highway
 - Brand new Physical Therapy office +/- 6,159 SF
 - Join Family Foot and Ankle Center of South Jersey
 - Major capital improvements completed to the building
 - Shared conference room available
 - Large cafeteria available for all tenants
 - Elevator on site
 - Excellent Parking

Contact Us

Brian Goren
Senior Advisor
410.371.2208
brian.goren@wolfcre.com



follow us:    

The foregoing information was furnished to us by sources which we deem to be reliable, but no warranty or representation is made as to the accuracy thereof. Subject to correction of errors, omissions, change of price, prior sale or withdrawal from market without notice.

ADDITIONAL PHOTOS



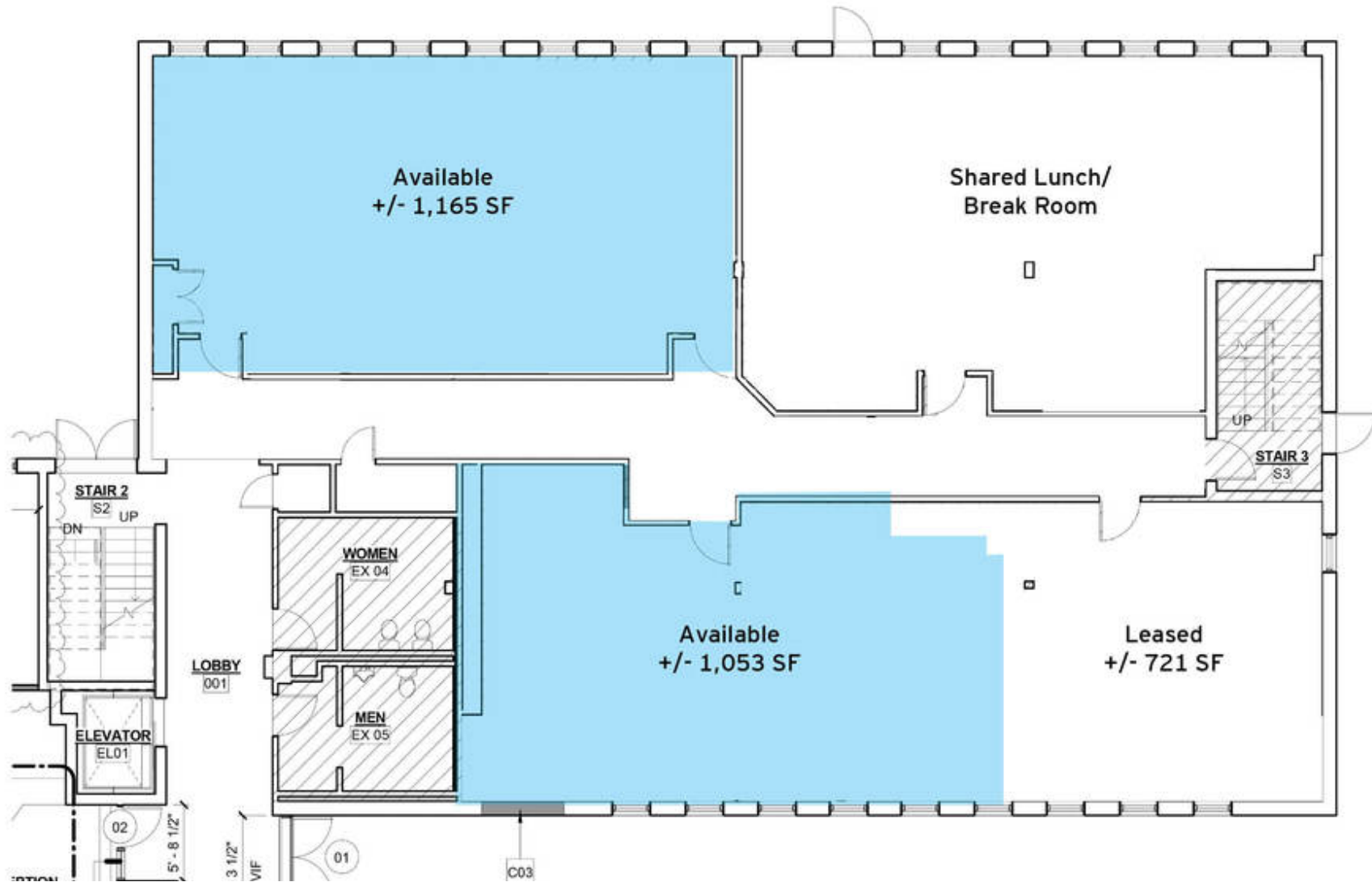
The foregoing information was furnished to us by sources which we deem to be reliable, but no warranty or representation is made as to the accuracy thereof. Subject to correction of errors, omissions, change of price, prior sale or withdrawal from market without notice.

ADDITIONAL PHOTOS



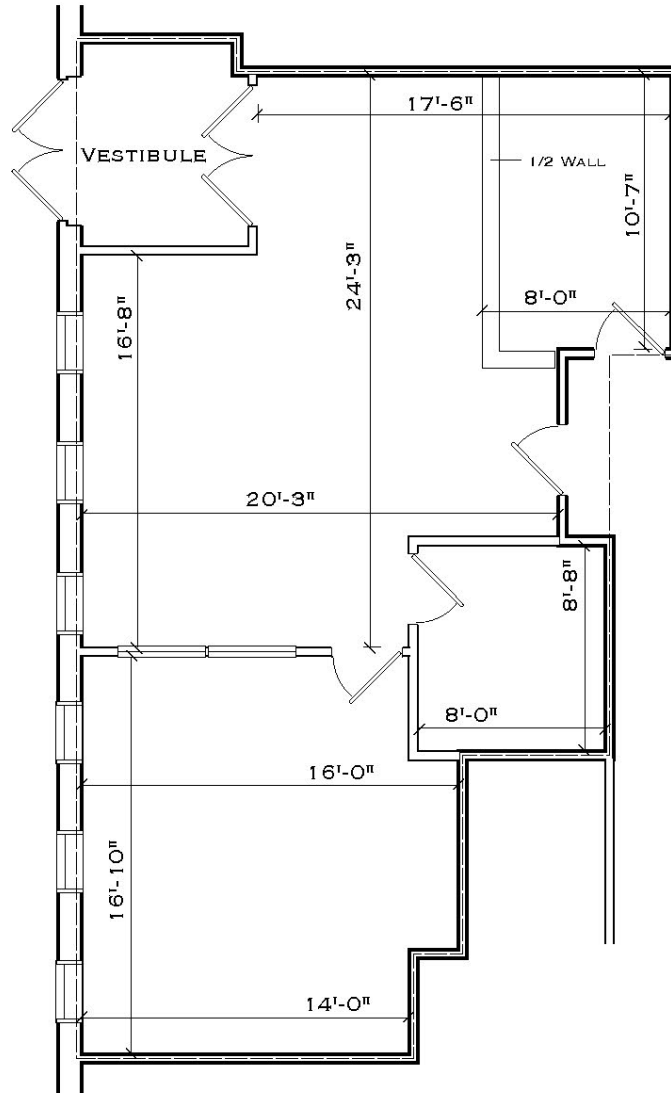
The foregoing information was furnished to us by sources which we deem to be reliable, but no warranty or representation is made as to the accuracy thereof. Subject to correction of errors, omissions, change of price, prior sale or withdrawal from market without notice.

1ST FLOOR PLAN - +/- 1,053 SF & +/- 1,165 SF

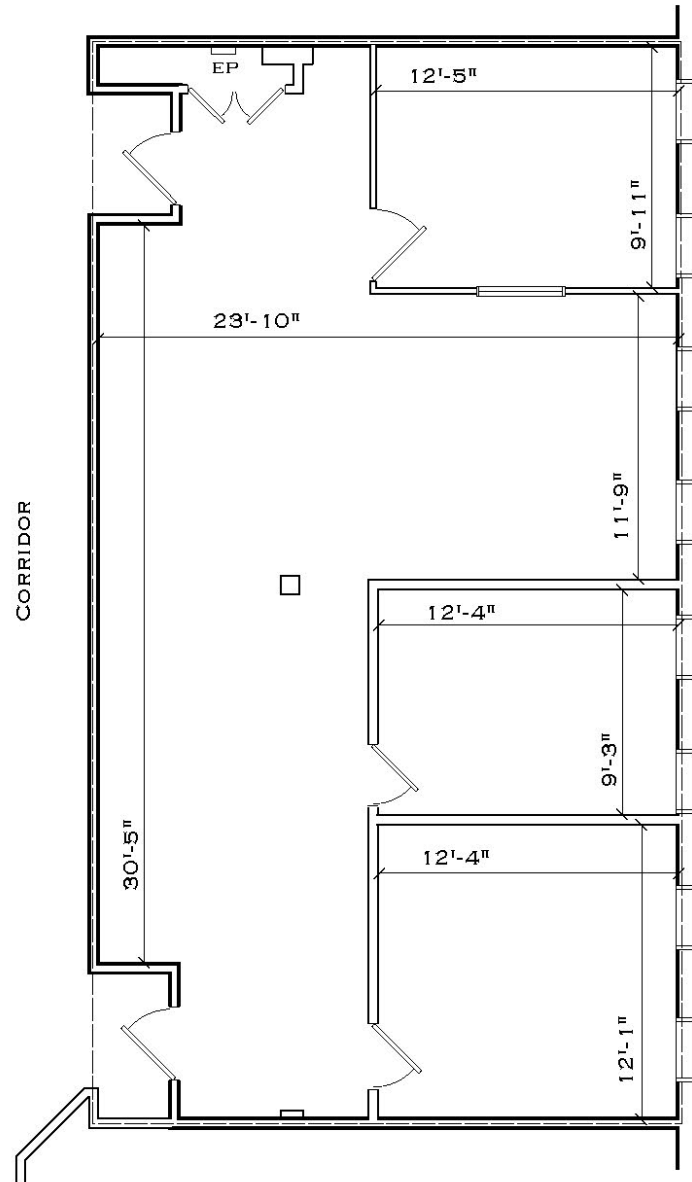


The foregoing information was furnished to us by sources which we deem to be reliable, but no warranty or representation is made as to the accuracy thereof. Subject to correction of errors, omissions, change of price, prior sale or withdrawal from market without notice.

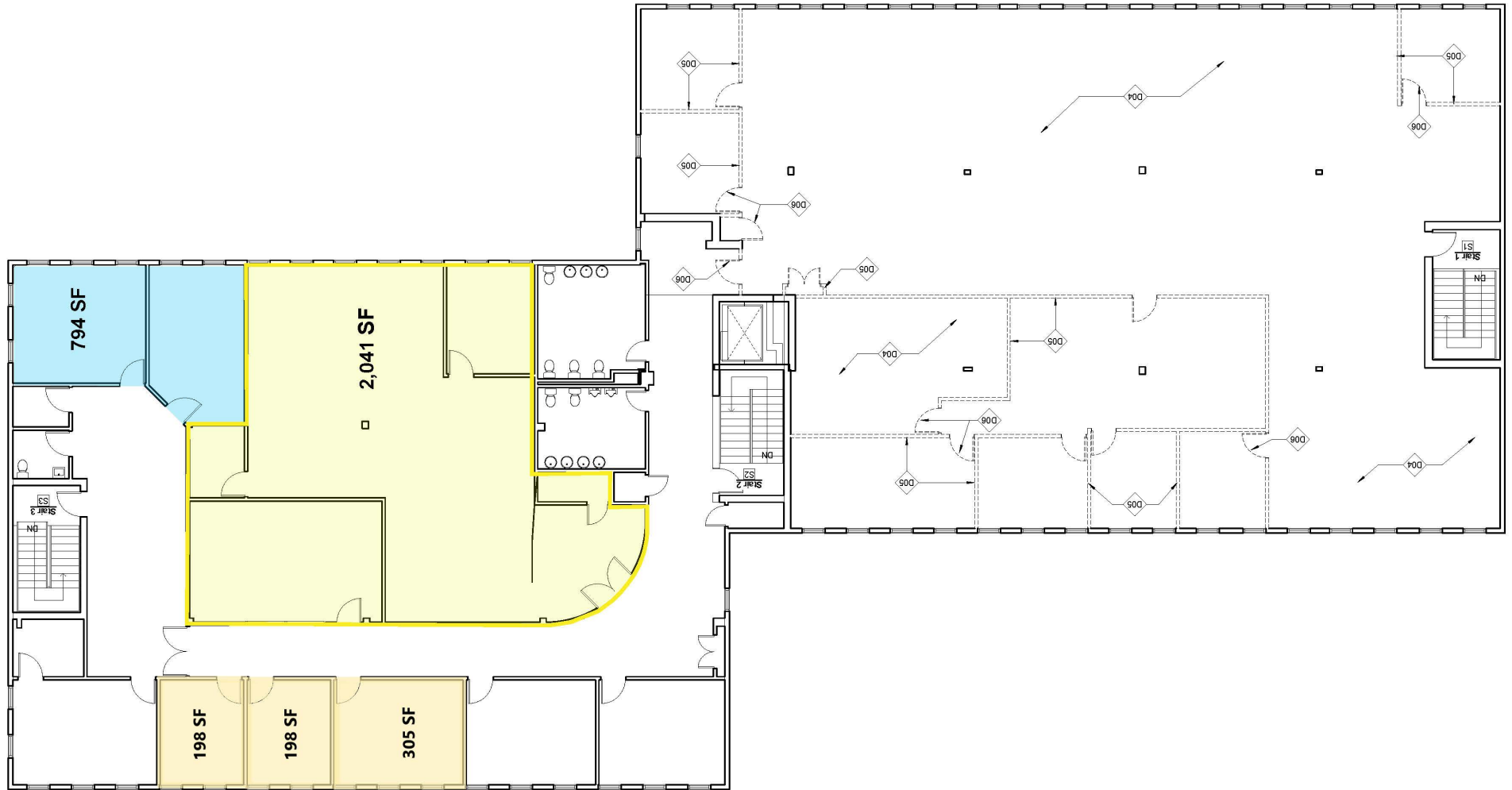
SUITE 130 - 1,002 SF



SUITE 140 - 1,195 SF

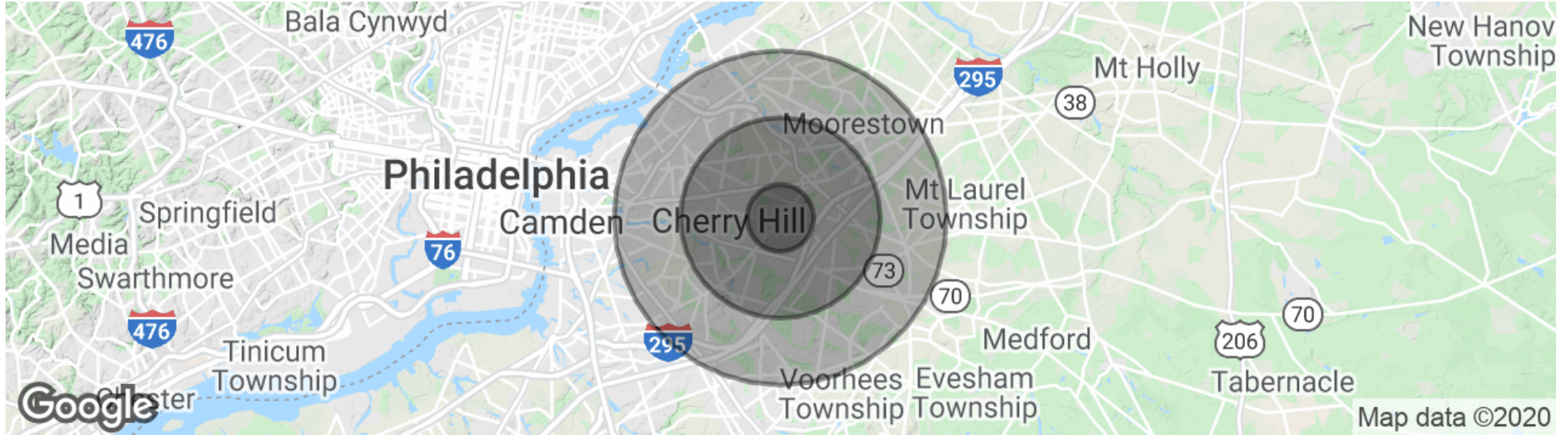


FLOOR PLANS - SECOND FLOOR



The foregoing information was furnished to us by sources which we deem to be reliable, but no warranty or representation is made as to the accuracy thereof. Subject to correction of errors, omissions, change of price, prior sale or withdrawal from market without notice.

DEMOGRAPHICS MAP & REPORT



| POPULATION | 1 MILE | 3 MILES | 5 MILES |
|--------------------------------|---------------|----------------|----------------|
| Total population | 13,292 | 88,746 | 240,659 |
| Median age | 44.4 | 41.7 | 41.4 |
| Median age (Male) | 41.8 | 39.8 | 39.8 |
| Median age (Female) | 47.6 | 43.8 | 43.1 |
| HOUSEHOLDS & INCOME | 1 MILE | 3 MILES | 5 MILES |
| Total households | 5,248 | 35,290 | 92,353 |
| # of persons per HH | 2.5 | 2.5 | 2.6 |
| Average HH income | \$88,092 | \$86,366 | \$97,657 |
| Average house value | \$288,535 | \$290,603 | \$298,547 |

* Demographic data derived from 2010 US Census



The foregoing information was furnished to us by sources which we deem to be reliable, but no warranty or representation is made as to the accuracy thereof. Subject to correction of errors, omissions, change of price, prior sale or withdrawal from market without notice.