



400 ROUTE 38 | MOORESTOWN, NJ

## PROPERTY DETAILS & HIGHLIGHTS

**Property Address:** 400 Route 38, Moorestown, NJ 08057  
**Property Type:** Office/Mixed-Use  
**Available SF:** 29,530 SF  
**Price:** \$12.00 - \$15.00/SF NNN

## PROPERTY OVERVIEW

Highly visible location with a strong daytime population

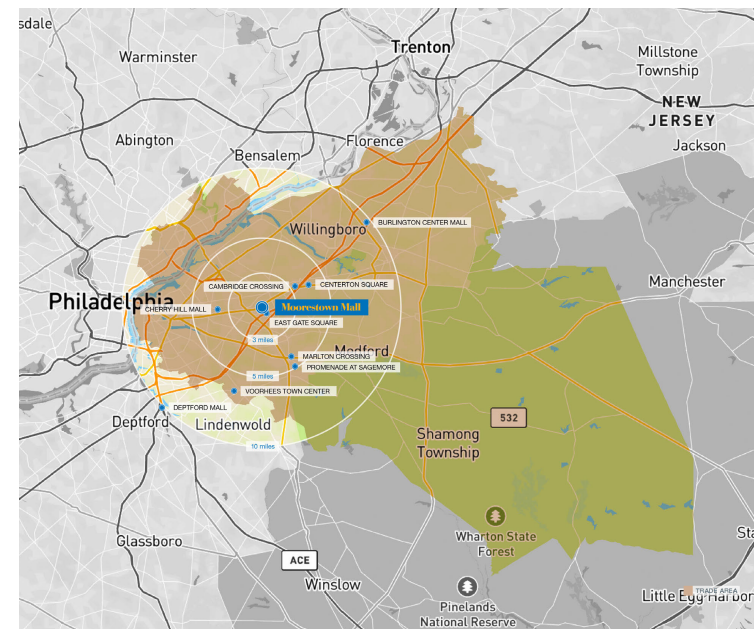
## LOCATION OVERVIEW

- Available for immediate possession
- Highly visible location with a strong daytime population
- Former Macy's store redevelopment leasing opportunity
- Ideal for a variety of uses including education, training center, back office operations, call center, etc.
- Surrounded by brand name retail, state-of-the-art entertainment and numerous restaurants
- Location offers a diverse mix of high demand uses
- Located in the most affluent suburb in Southern New Jersey
- Direct access to Route 38 and within close proximity to Route 73, I-295 and the New Jersey Turnpike
- Within close proximity of East Gate Square, Retail Shopping stores, and office professionals
- Neighboring to many residential communities
- Owned & Managed by PREIT (NYSE:PEI)

## Contact Us

Christopher R. Henderson  
Principal | Vice President  
856 857 6337  
chris.henderson@wolfcre.com

Jason M. Wolf  
Managing Principal  
856 857 6301  
jason.wolf@wolfcre.com



The foregoing information was furnished to us by sources which we deem to be reliable, but no warranty or representation is made as to the accuracy thereof. Subject to correction of errors, omissions, change of price, prior sale or withdrawal from market without notice.



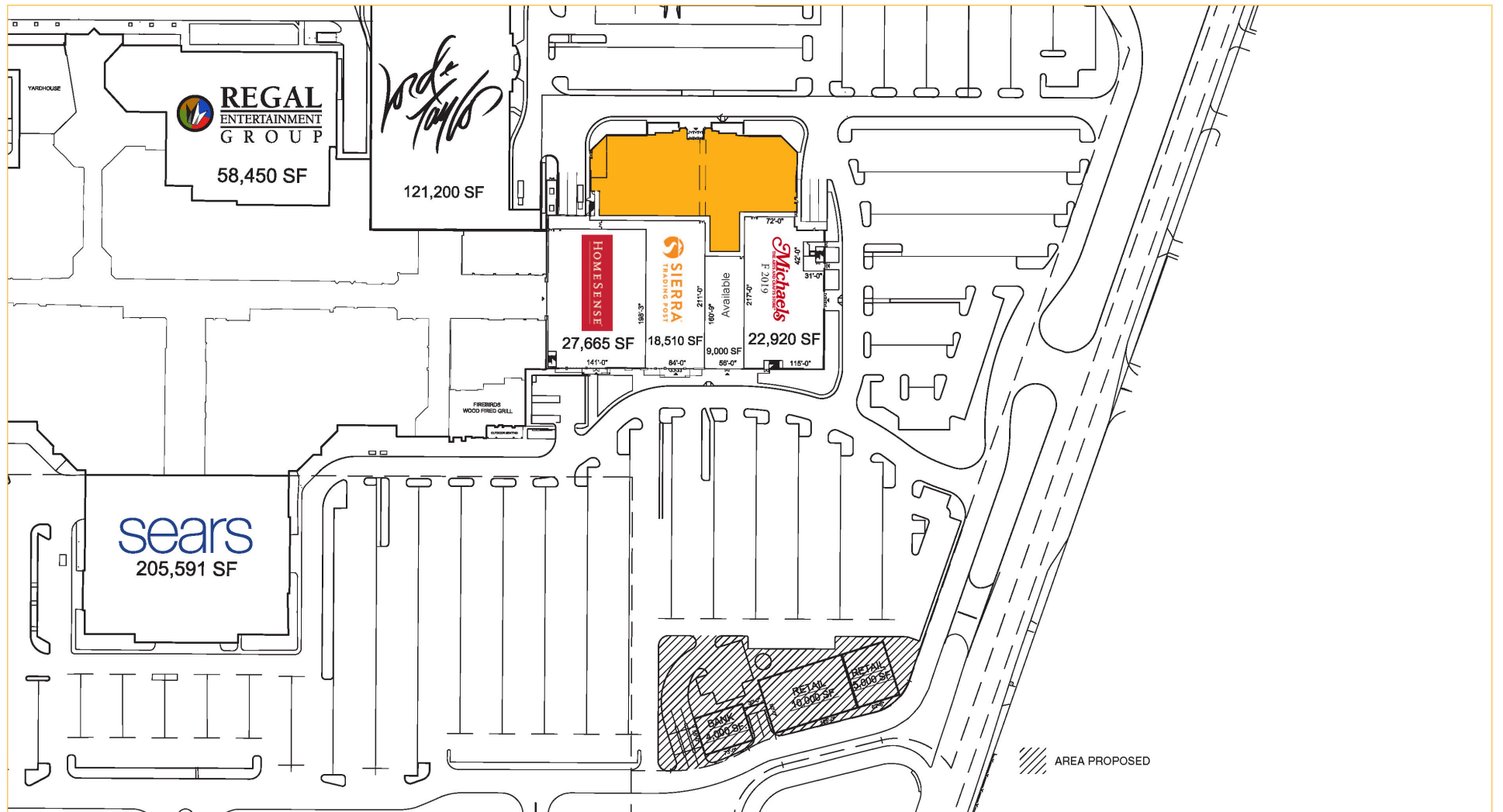
RETAILER MAP



The foregoing information was furnished to us by sources which we deem to be reliable, but no warranty or representation is made as to the accuracy thereof. Subject to correction of errors, omissions, change of price, prior sale or withdrawal from market without notice.



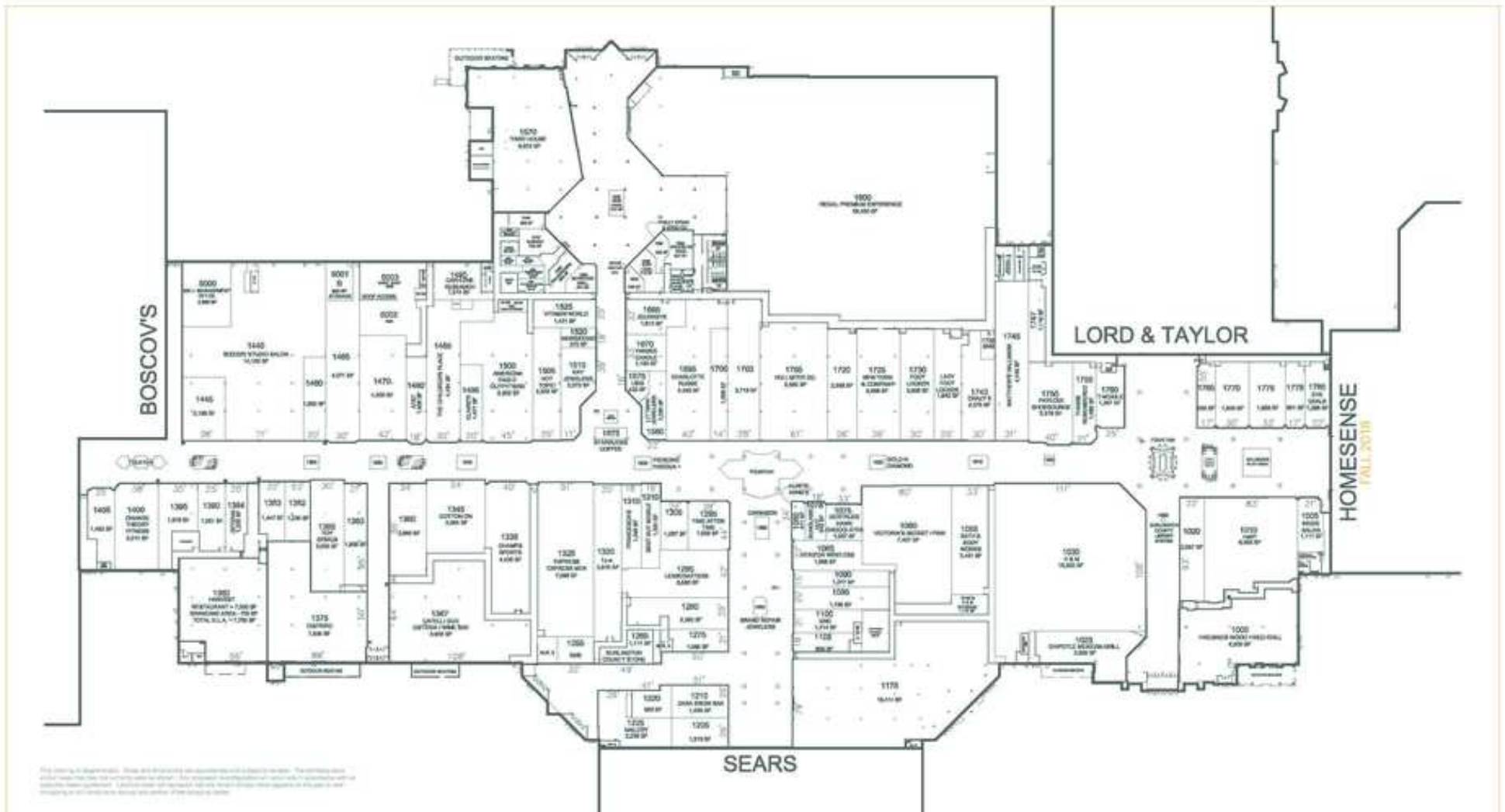
SITE PLAN



The foregoing information was furnished to us by sources which we deem to be reliable, but no warranty or representation is made as to the accuracy thereof. Subject to correction of errors, omissions, change of price, prior sale or withdrawal from market without notice.



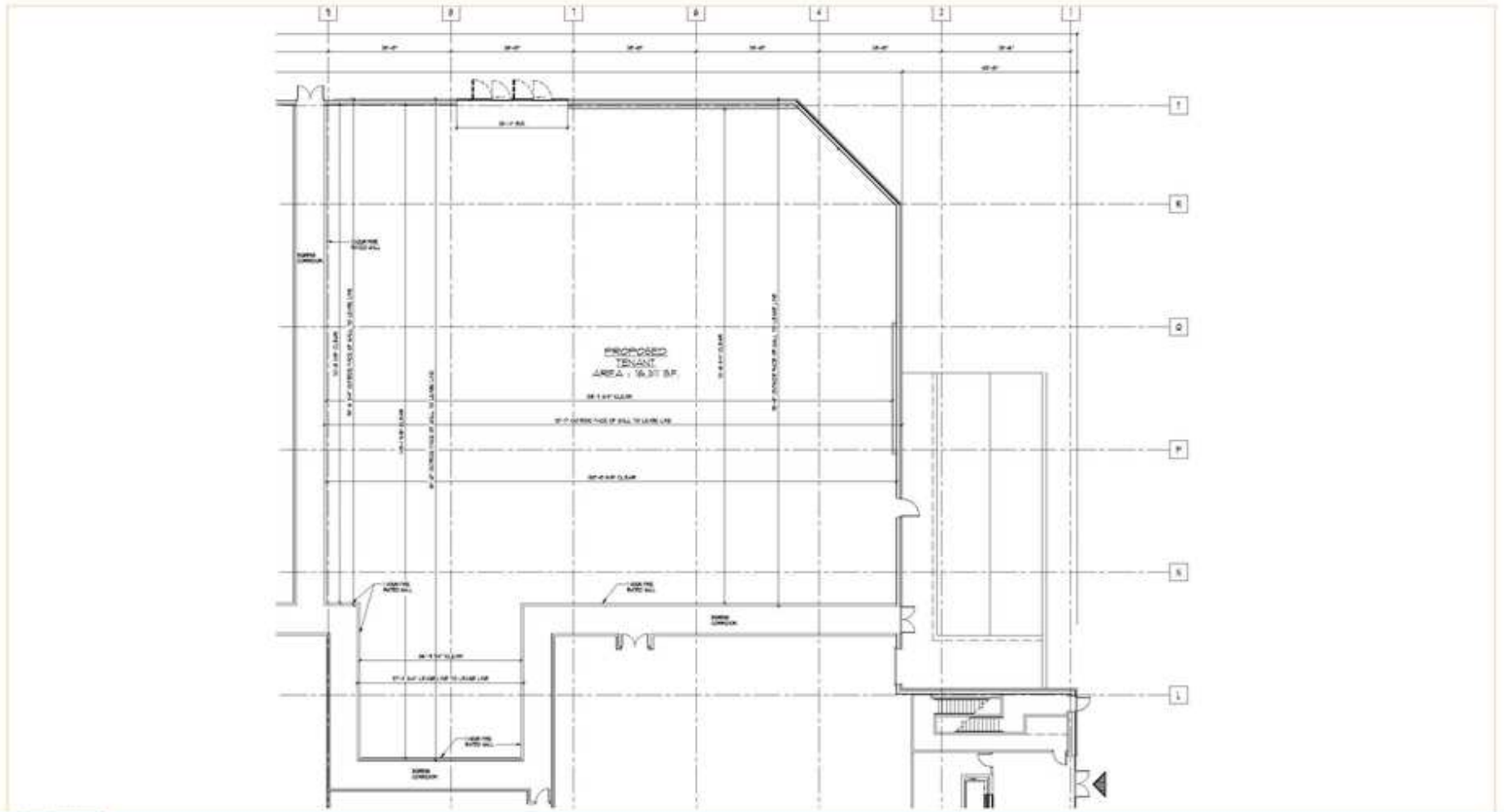
## FLOOR PLANS



The foregoing information was furnished to us by sources which we deem to be reliable, but no warranty or representation is made as to the accuracy thereof. Subject to correction of errors, omissions, change of price, prior sale or withdrawal from market without notice.



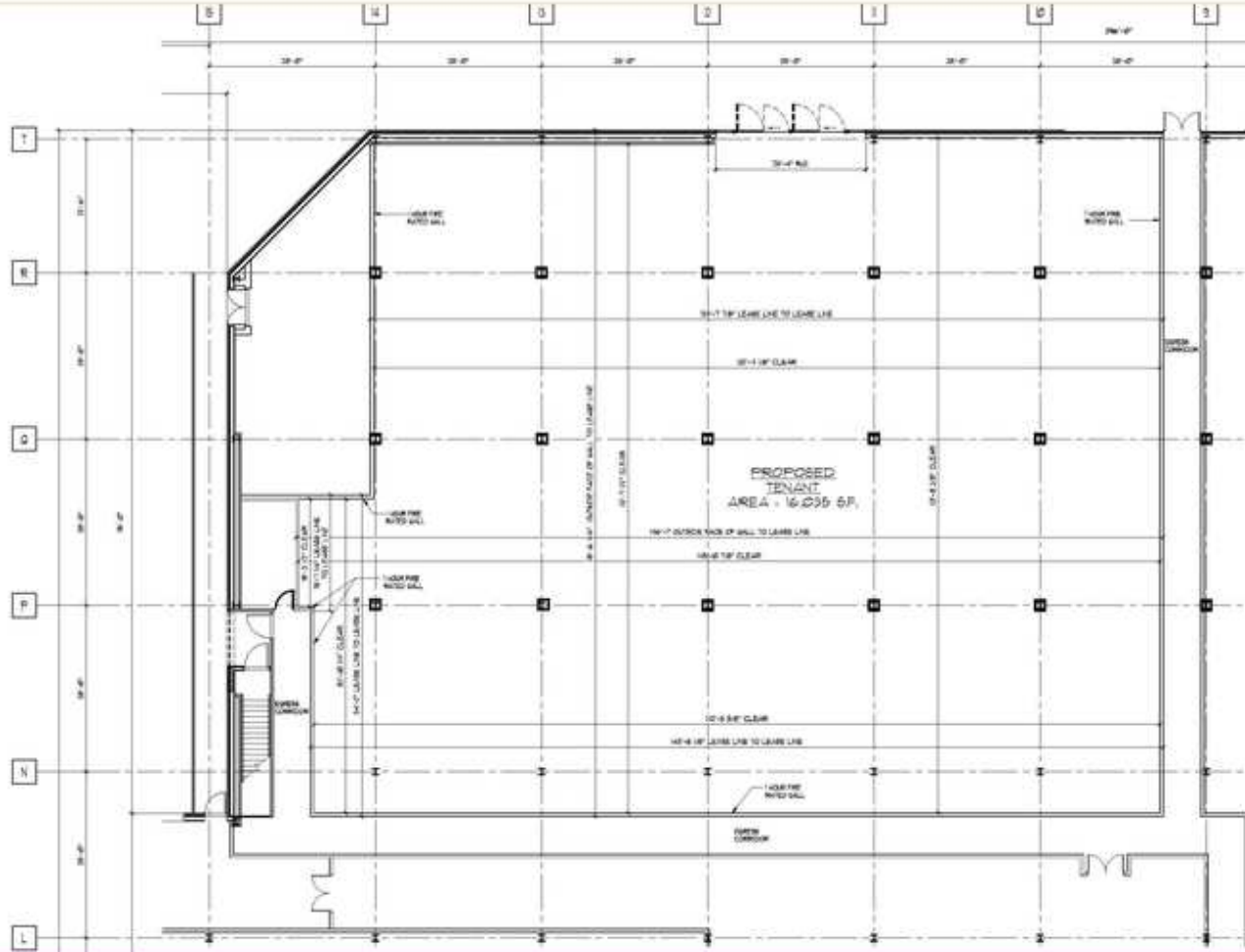
FLOOR PLANS



The foregoing information was furnished to us by sources which we deem to be reliable, but no warranty or representation is made as to the accuracy thereof. Subject to correction of errors, omissions, change of price, prior sale or withdrawal from market without notice.



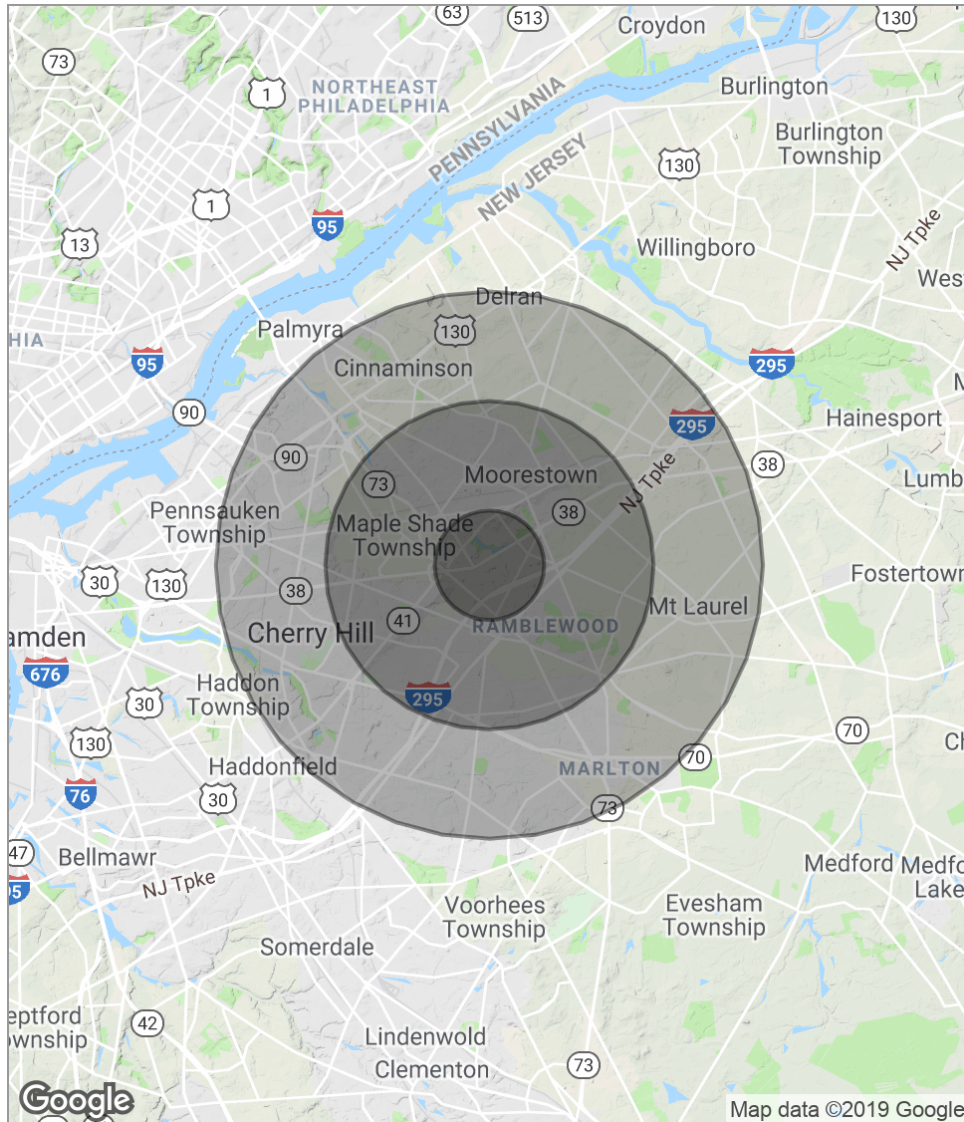
## FLOOR PLANS



The foregoing information was furnished to us by sources which we deem to be reliable, but no warranty or representation is made as to the accuracy thereof. Subject to correction of errors, omissions, change of price, prior sale or withdrawal from market without notice.



## DEMOGRAPHICS MAP



POPULATION	1 MILE	3 MILES	5 MILES
Total population	7,982	73,753	196,254
Median age	42.0	41.3	42.1
Median age (male)	40.8	39.8	40.6
Median age (Female)	43.9	43.0	43.5
HOUSEHOLDS & INCOME	1 MILE	3 MILES	5 MILES
Total households	3,583	29,205	74,840
# of persons per HH	2.2	2.5	2.6
Average HH income	\$76,259	\$94,043	\$102,916
Average house value	\$395,616	\$336,181	\$311,716

*\* Demographic data derived from 2010 US Census*

The foregoing information was furnished to us by sources which we deem to be reliable, but no warranty or representation is made as to the accuracy thereof. Subject to correction of errors, omissions, change of price, prior sale or withdrawal from market without notice.