



PROFESSIONAL OFFICE PROPERTY AVAILABLE FOR SALE



323 NORTH WHITE HORSE PIKE | LAUREL SPRINGS, NJ



Wolf Commercial Real Estate
www.WolfCRE.com



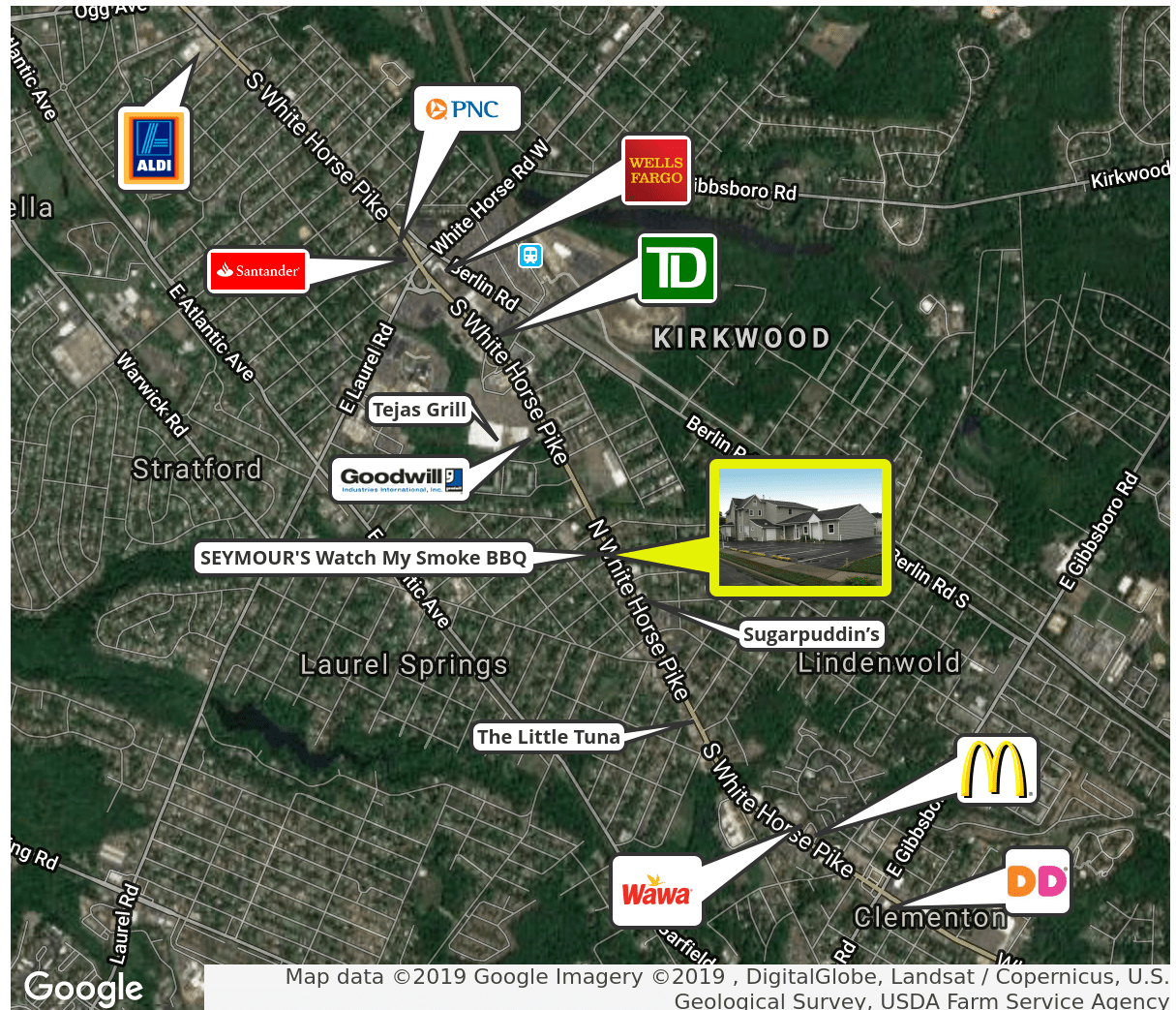
PROPERTY DESCRIPTION

| | |
|------------------------------------|--|
| Location | 323 North White Horse Pike Laurel Springs, NJ 08021 |
| Size / SF Available | 6,600 SF |
| Sale Price | \$185,000 |
| Signage | Building and pylon signage available |
| Property / Area Description | <ul style="list-style-type: none"> • Ideal for professional office user • Zoned B-1 • Situated on approximately .26 acres • Building and pylon signage available • Abundant Parking • Highly visible location on the White Horse Pike (Route 30) Minutes from Jefferson Health NJ, Echelon Mall and PATCO High Speed line. |

Contact Us

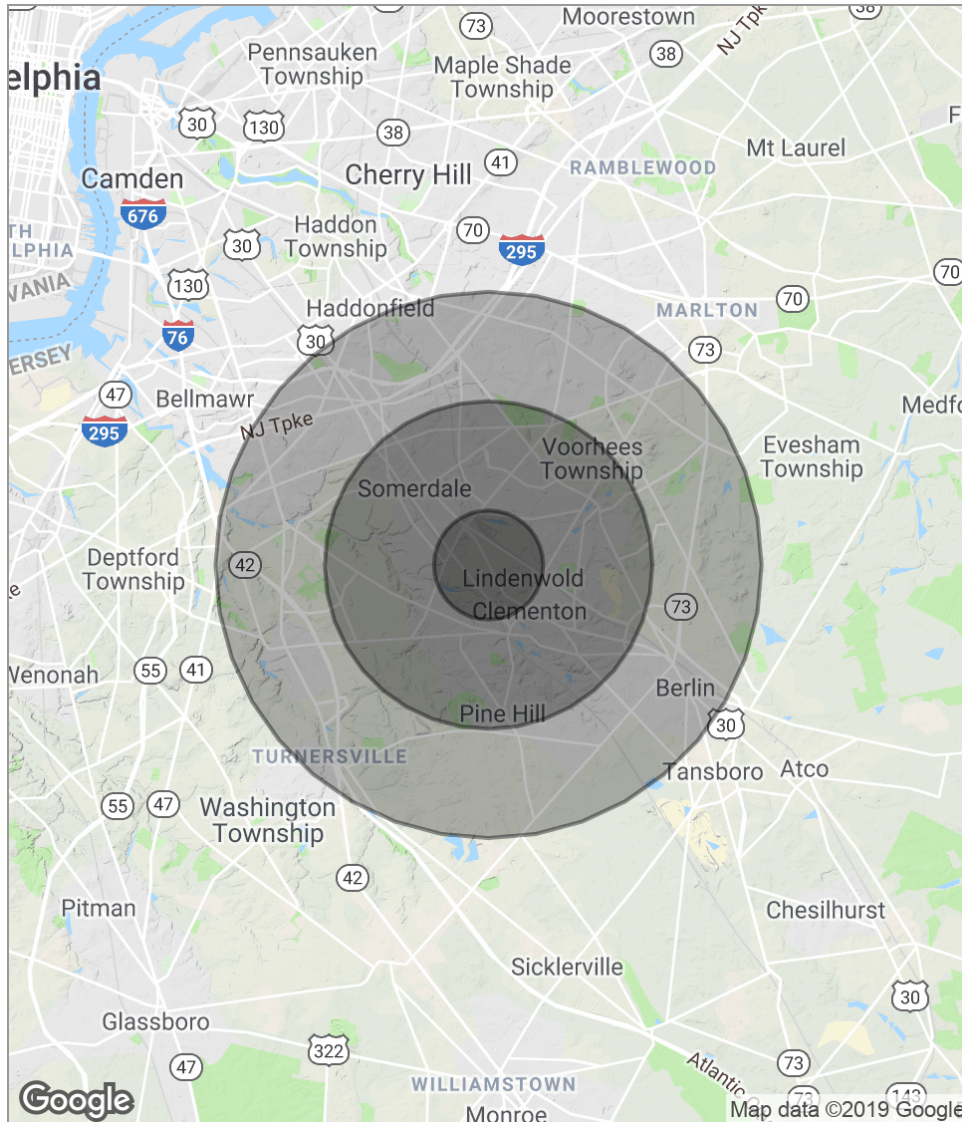
Ryan Barikian
Senior Associate
856.857.6307
ryan.barikian@wolfcre.com

Luke Majewski
Associate
856.857.6303
luke.majewski@wolfcre.com



follow us:    

DEMOGRAPHICS MAP



| POPULATION | 1 MILE | 3 MILES | 5 MILES |
|---------------------|-----------|-----------|-----------|
| Total population | 13,481 | 89,633 | 216,541 |
| Median age | 35.3 | 37.4 | 38.8 |
| Median age (male) | 33.7 | 36.3 | 37.5 |
| Median age (Female) | 36.5 | 38.3 | 39.8 |
| HOUSEHOLDS & INCOME | 1 MILE | 3 MILES | 5 MILES |
| Total households | 5,194 | 36,716 | 82,769 |
| # of persons per HH | 2.6 | 2.4 | 2.6 |
| Average HH income | \$66,062 | \$68,800 | \$85,577 |
| Average house value | \$181,356 | \$215,426 | \$285,711 |

** Demographic data derived from 2010 US Census*

The foregoing information was furnished to us by sources which we deem to be reliable, but no warranty or representation is made as to the accuracy thereof. Subject to correction of errors, omissions, change of price, prior sale or withdrawal from market without notice.