



226 HADDONFIELD ROAD | CHERRY HILL, NJ

## PROPERTY DESCRIPTION

<b>Location</b>	226 Haddonfield Road Cherry Hill, NJ 08002
<b>Size / SF Available</b>	6,625 SF
<b>Lease Price</b>	Call for more information Available for
<b>Occupancy</b>	occupancy Q2 2019
<b>Signage</b>	Tenant Directory & Monument Signage
<b>Property / Area Description</b>	<ul style="list-style-type: none"> <li>• Unique high-end office space</li> <li>• Ideal for HQ user</li> <li>• Recently renovated property with many high-end interior features</li> <li>• Prominently positioned at the corner of Haddonfield &amp; Dudley Ave, across from the Cherry Hill Mall</li> <li>• Well maintained and landscaped property</li> <li>• Abundant parking and within close proximity to many retailers</li> <li>• Within close proximity to Routes 38, 70, 73, I-295 (Exit 34) and the NJ Turnpike</li> <li>• Located in a high demographic area of Cherry Hill Township</li> </ul>

## Contact Us

Christopher Henderson Principal & Vice President 856.857.6337 chris.henderson@wolfcre.com	Jason Wolf Managing Principal 856.857.6301 jason.wolf@wolfcre.com
--	--

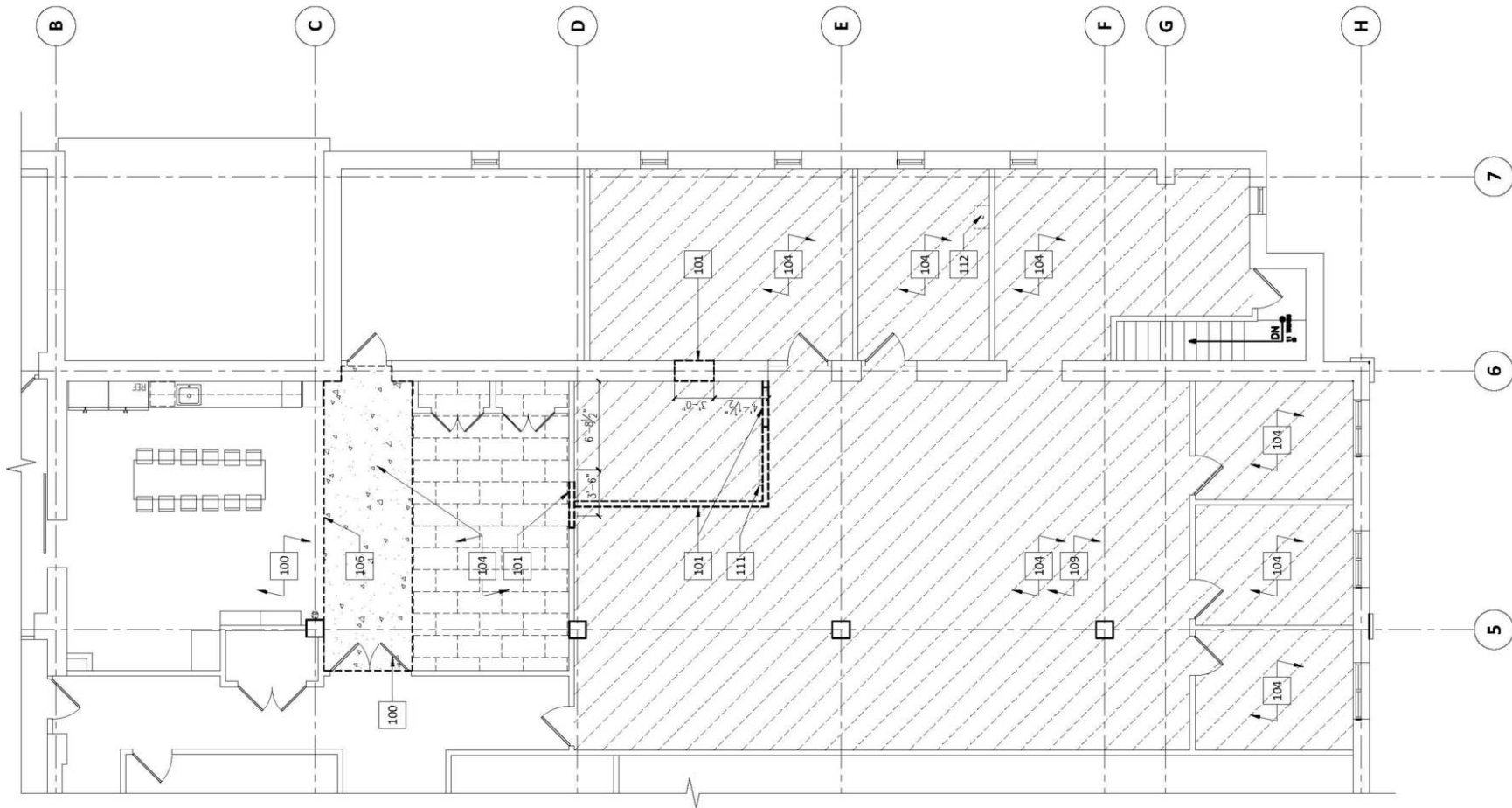


Map data ©2019 Google Imagery ©2019 , DigitalGlobe, Landsat / Copernicus, U.S. Geological Survey, USDA Farm Service Agency

follow us:    

The foregoing information was furnished to us by sources which we deem to be reliable, but no warranty or representation is made as to the accuracy thereof. Subject to correction of errors, omissions, change of price, prior sale or withdrawal from market without notice.

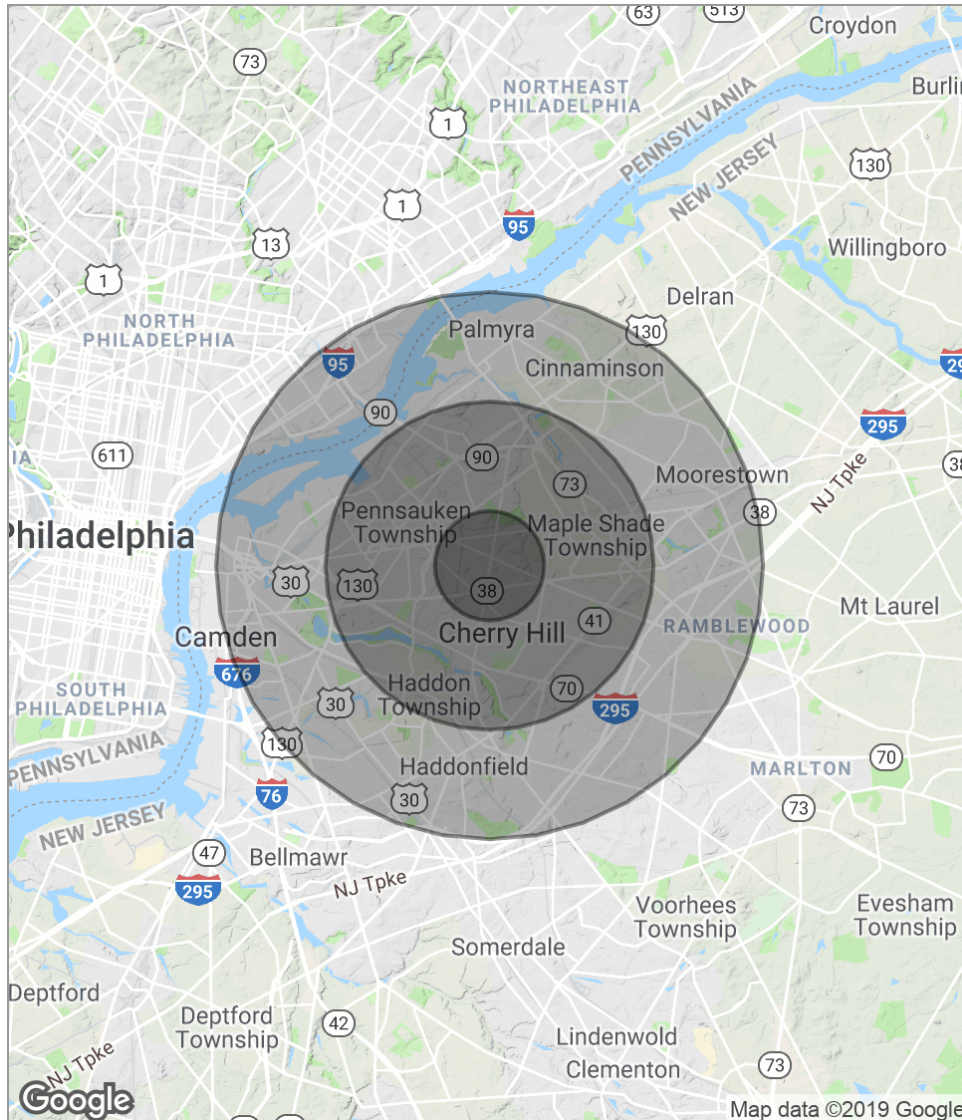
FLOOR PLANS



The foregoing information was furnished to us by sources which we deem to be reliable, but no warranty or representation is made as to the accuracy thereof. Subject to correction of errors, omissions, change of price, prior sale or withdrawal from market without notice.



## DEMOGRAPHICS MAP



POPULATION	1 MILE	3 MILES	5 MILES
Total population	8,336	107,044	291,217
Median age	40.0	39.6	38.7
Median age (male)	38.2	37.4	36.9
Median age (Female)	42.4	41.7	40.4
HOUSEHOLDS & INCOME	1 MILE	3 MILES	5 MILES
Total households	3,169	41,044	111,389
# of persons per HH	2.6	2.6	2.6
Average HH income	\$79,955	\$79,134	\$79,771
Average house value	\$260,681	\$254,220	\$262,795

*\* Demographic data derived from 2010 US Census*

The foregoing information was furnished to us by sources which we deem to be reliable, but no warranty or representation is made as to the accuracy thereof. Subject to correction of errors, omissions, change of price, prior sale or withdrawal from market without notice.