



1003 TILTON ROAD | NORTHFIELD, NJ

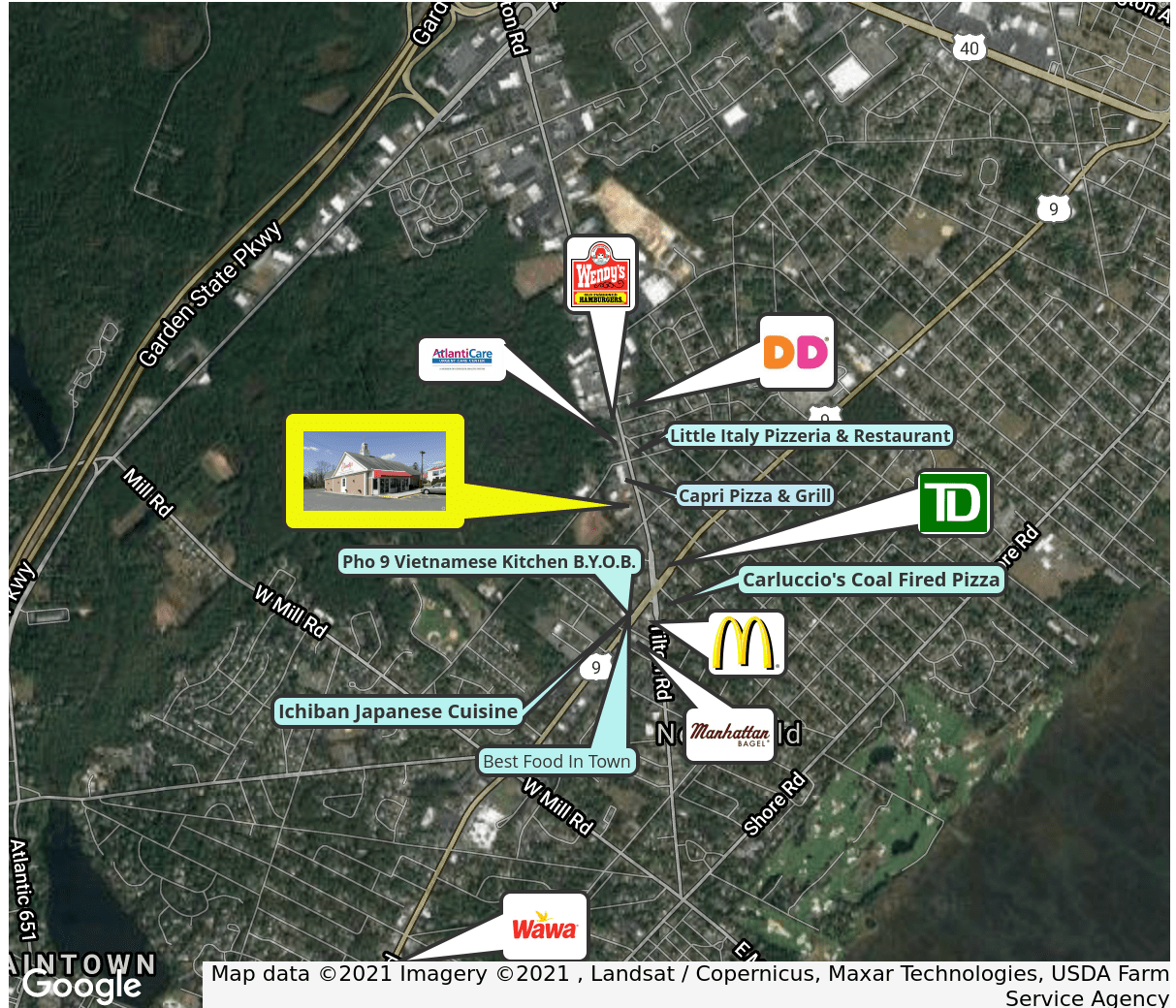
PROPERTY DESCRIPTION

Location	1003 Tilton Road Northfield, NJ 08225
Size / SF Available	3,054 SF
Lease Price	Call for information
Occupancy	Available for immediate occupancy
Signage	Freestanding pylon and storefront façade signage
Property / Area Description	<ul style="list-style-type: none"> Formerly occupied as a Friendly's Restaurant Available for immediate occupancy Well maintained and landscaped property Abundant parking, highly visible signage, and within close proximity to many high-traffic retailers Within close proximity to Atlantic City Expressway and Garden State Parkway. Excellent access to Atlantic City, Margate and all shore points Heavily traveled location in a high demographic area

Contact Us

Jason Wolf
Managing Principal
215.588.800
jason.wolf@wolfcre.com

Ryan Barikian
Vice President
856.383.5355
ryan.barikian@wolfcre.com

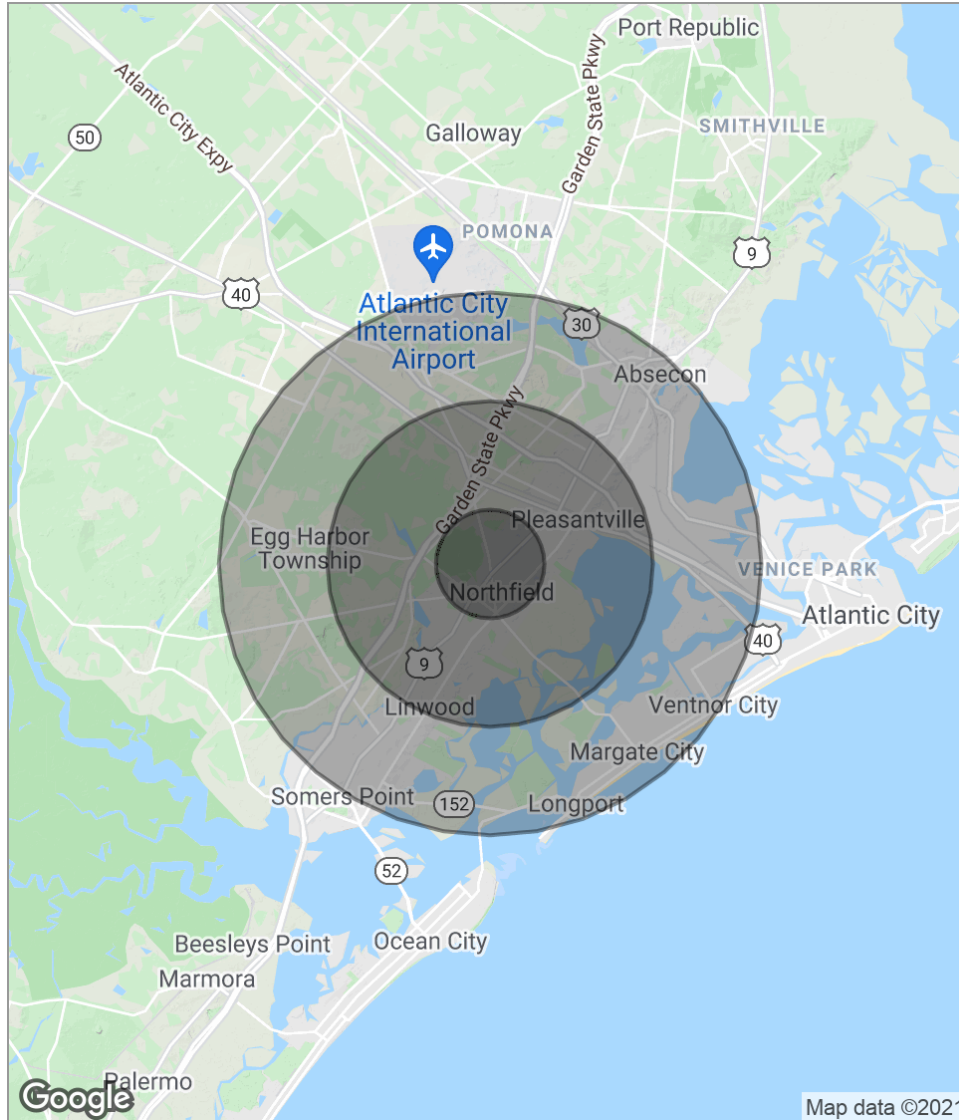


Map data ©2021 Imagery ©2021, Landsat / Copernicus, Maxar Technologies, USDA Farm Service Agency

follow us:    

The foregoing information was furnished to us by sources which we deem to be reliable, but no warranty or representation is made as to the accuracy thereof. Subject to correction of errors, omissions, change of price, prior sale or withdrawal from market without notice.

DEMOGRAPHICS MAP



POPULATION	1 MILE	3 MILES	5 MILES
Total population	7,777	43,540	97,836
Median age	41.2	38.6	39.9
Median age (male)	39.3	36.9	38.7
Median age (Female)	43.5	40.6	41.4
HOUSEHOLDS & INCOME	1 MILE	3 MILES	5 MILES
Total households	2,783	15,365	36,249
# of persons per HH	2.8	2.8	2.7
Average HH income	\$79,212	\$77,345	\$77,335
Average house value	\$292,611	\$279,281	\$289,652

** Demographic data derived from 2010 US Census*

The foregoing information was furnished to us by sources which we deem to be reliable, but no warranty or representation is made as to the accuracy thereof. Subject to correction of errors, omissions, change of price, prior sale or withdrawal from market without notice.