



1003 TILTON ROAD | NORTHFIELD, NJ

PROPERTY DESCRIPTION

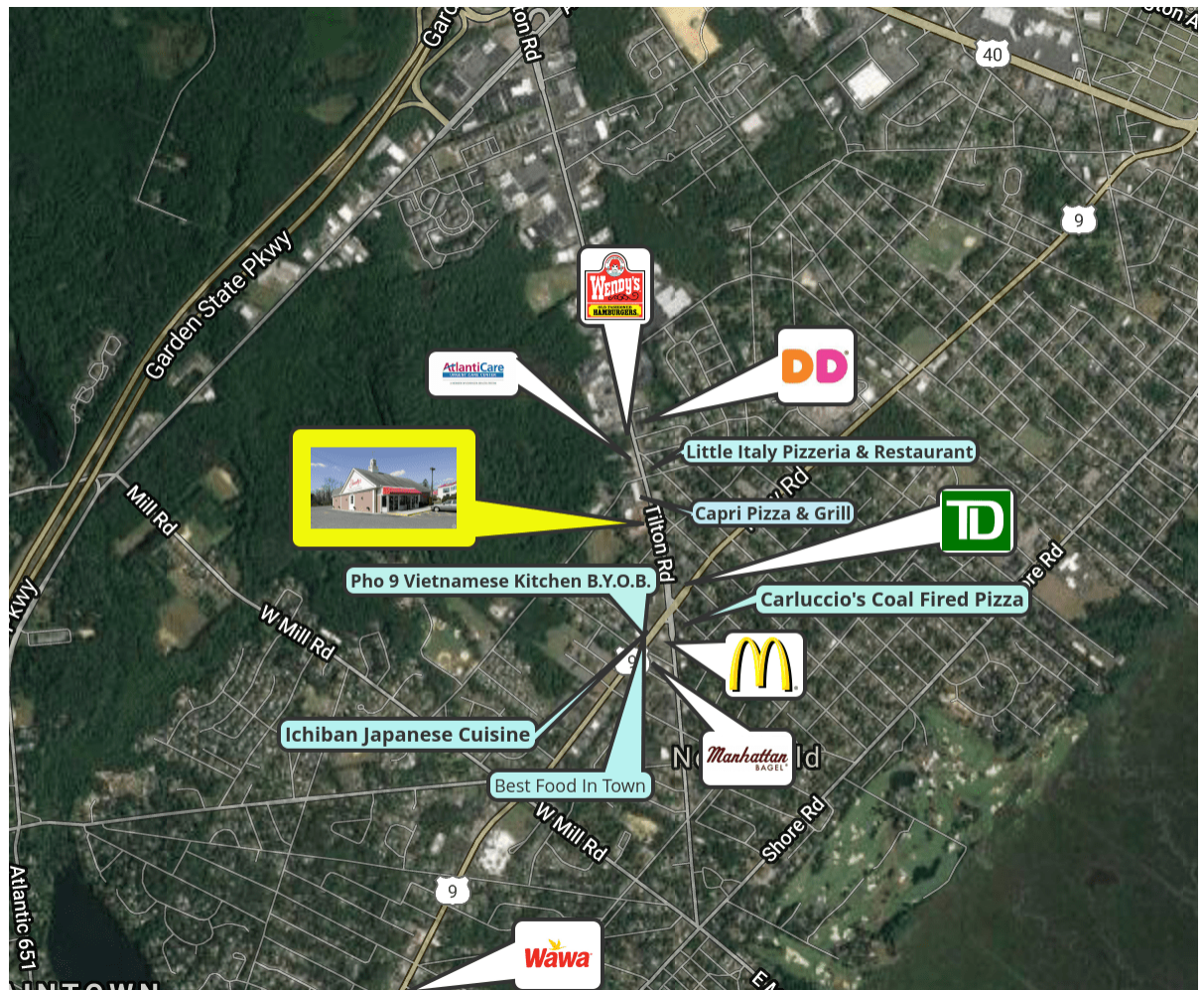
Location	1003 Tilton Road Northfield, NJ 08225
Size / SF Available	3,054 SF
Lease Price	\$70,000 per year (NNN)
Occupancy	Available for immediate occupancy
Signage	Freestanding pylon and storefront façade signage
Property / Area Description	<ul style="list-style-type: none"> Formerly occupied as a Friendly's Restaurant 3,054 SF free standing property situated on 1.18 acres Available for immediate occupancy Well maintained and landscaped property Abundant parking, highly visible signage, and within close proximity to many high-traffic retailers Within close proximity to Atlantic City Expressway and Garden State Parkway. Excellent access to Atlantic City, Margate and all shore points Heavily traveled location in a high demographic area

Contact Us

Ryan Barikian
Senior Associate
856.857.6307
ryan.barikian@wolfcre.com

Christopher Henderson
Principal & Vice President
856.857.6337
chris.henderson@wolfcre.com

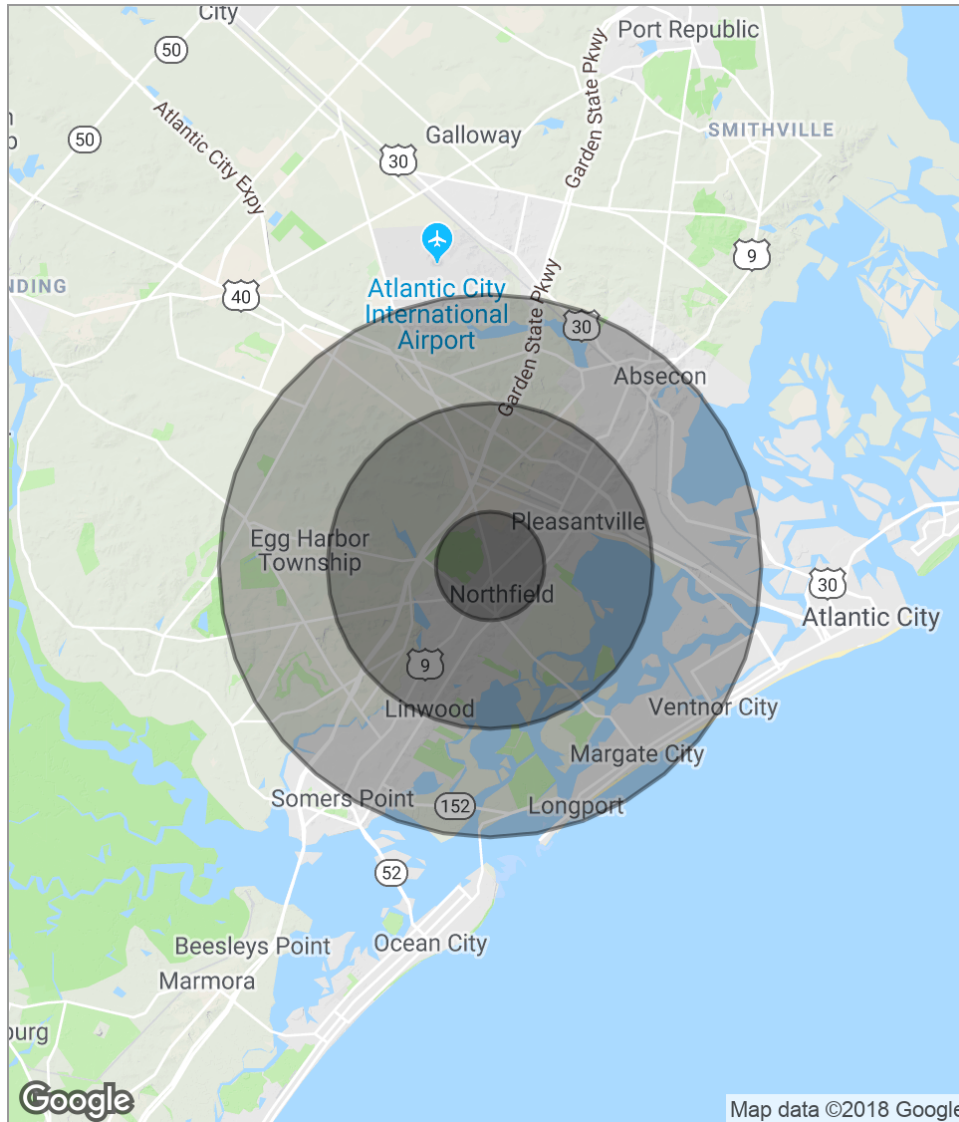
Jason Wolf
Managing Principal
856.857.6301
jason.wolf@wolfcre.com



follow us:    

The foregoing information was furnished to us by sources which we deem to be reliable, but no warranty or representation is made as to the accuracy thereof. Subject to correction of errors, omissions, change of price, prior sale or withdrawal from market without notice.

DEMOGRAPHICS MAP



POPULATION	1 MILE	3 MILES	5 MILES
Total population	7,777	43,540	97,836
Median age	41.2	38.6	39.9
Median age (male)	39.3	36.9	38.7
Median age (Female)	43.5	40.6	41.4
HOUSEHOLDS & INCOME	1 MILE	3 MILES	5 MILES
Total households	2,783	15,365	36,249
# of persons per HH	2.8	2.8	2.7
Average HH income	\$79,212	\$77,345	\$77,335
Average house value	\$292,611	\$279,281	\$289,652

** Demographic data derived from 2010 US Census*

The foregoing information was furnished to us by sources which we deem to be reliable, but no warranty or representation is made as to the accuracy thereof. Subject to correction of errors, omissions, change of price, prior sale or withdrawal from market without notice.