



2075-2099 ROUTE 70 EAST | CHERRY HILL, NJ

## PROPERTY DETAILS & HIGHLIGHTS

Property Address:	Liberty Bell Plaza 2075-2077 Route 70 East, Cherry Hill, NJ 08003
Available SF:	2,500 SF
Lease Price:	\$16.00/SF NNN
Signage:	Building and pylon signage available

### PROPERTY OVERVIEW

- Premier retail location on Route 70 within the Cherry Hill Business District
- Excellent signage opportunity
- Abundant Parking
- Join Dunkin Donuts & Liberty Bell Bank
- Well maintained and landscaped property
- Local ownership & management

### LOCATION OVERVIEW

- Premier retail location on Route 70 within the Cherry Hill Business District
- Convenient Access to Route 73, I-295 and The New Jersey Turnpike
- Location is surrounded by some of the region's most prestigious retail, health care providers and corporate office users
- Located in a high demographic area of Cherry Hill Township
- Located in densely populated area

### Contact Us

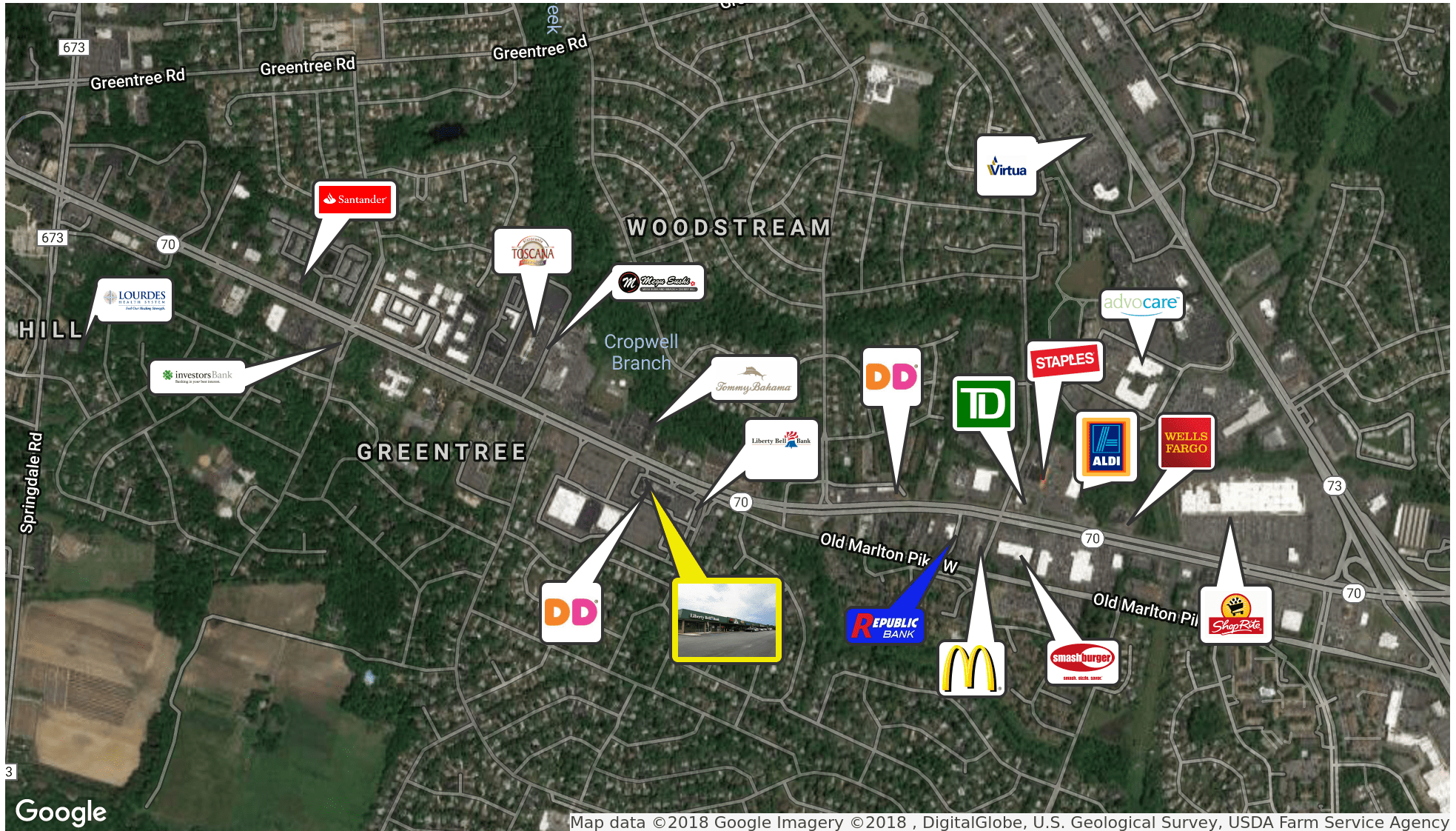
Christopher Henderson Principal & Vice President 856.857.6337 chris.henderson@wolfcre.com	Jason Wolf Managing Principal 856.857.6301 jason.wolf@wolfcre.com
--	--

The foregoing information was furnished to us by sources which we deem to be reliable, but no warranty or representation is made as to the accuracy thereof. Subject to correction of errors, omissions, change of price, prior sale or withdrawal from market without notice.





## RETAILER MAP



The foregoing information was furnished to us by sources which we deem to be reliable, but no warranty or representation is made as to the accuracy thereof. Subject to correction of errors, omissions, change of price, prior sale or withdrawal from market without notice.



## DEMOGRAPHICS MAP



POPULATION	1 MILE	3 MILES	5 MILES
Total population	9,664	76,111	200,843
Median age	41.9	42.3	42.0
Median age (male)	40.9	40.7	40.5
Median age (Female)	42.6	44.1	43.6
HOUSEHOLDS & INCOME	1 MILE	3 MILES	5 MILES
Total households	3,457	27,509	76,708
# of persons per HH	2.8	2.8	2.6
Average HH income	\$110,620	\$116,322	\$105,020
Average house value	\$336,676	\$338,087	\$344,678

*\* Demographic data derived from 2010 US Census*

The foregoing information was furnished to us by sources which we deem to be reliable, but no warranty or representation is made as to the accuracy thereof. Subject to correction of errors, omissions, change of price, prior sale or withdrawal from market without notice.