

BLACK HORSE PIKE & MALAGA ROAD | WILLIAMSTOWN, NJ



## PROPERTY DESCRIPTION

**Location** Block 3801, Lots 3, 30, 32, 32 (1524 & 1624 BHP) at Black Horse Pike & Corkery Lane  
Black Horse Pike & Malaga Road  
Williamstown, NJ 08094

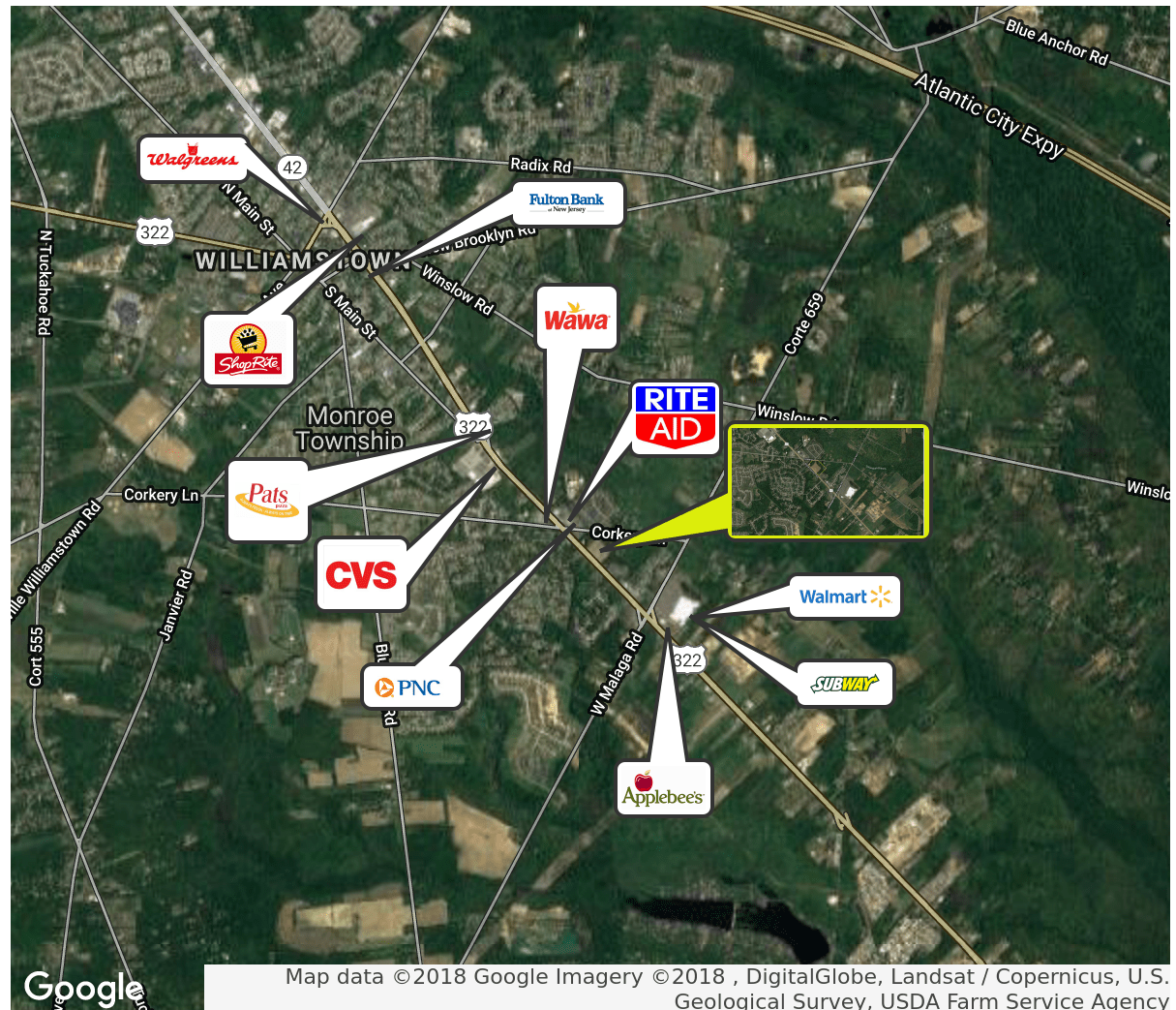
**Size / SF Available** 8.13 Acres

**Sale Price** Call for more information

- Property / Area Description**
- Highly visible retail site available for sale
  - Close proximity to Walmart
  - Situated in a rapidly growing trade area
  - Convenient access to Atlantic City and New Jersey shore communities via Atlantic City Expressway, I-295 and Black Horse Pike
  - Located within a high income residential area in excess of \$90,000 per year
  - 177,000 people live within 7 miles
  - Located in a prime retail and commercial development area.
  - Within close proximity to local health systems

## Contact Us

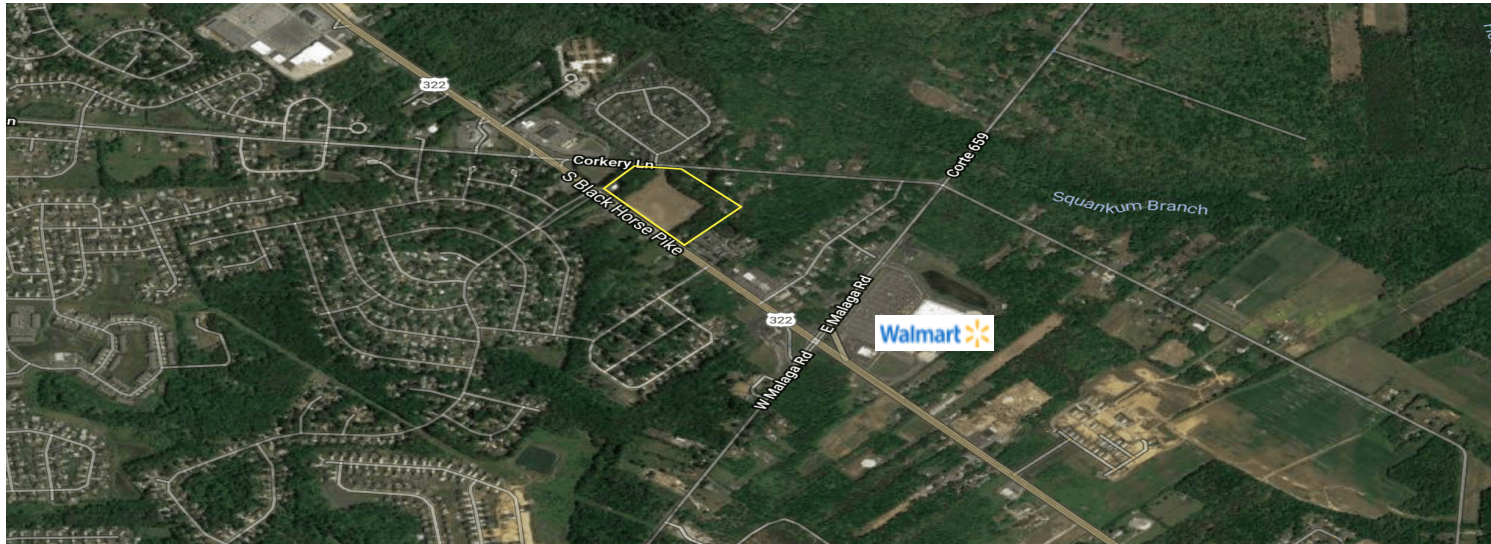
Jason Wolf Managing Principal 856.857.6301 jason.wolf@wolfcre.com	Christopher Henderson Principal & Vice President 856.857.6337 chris.henderson@wolfcre.com
--	--



follow us:    

The foregoing information was furnished to us by sources which we deem to be reliable, but no warranty or representation is made as to the accuracy thereof. Subject to correction of errors, omissions, change of price, prior sale or withdrawal from market without notice.

## DEMOGRAPHICS



DEMOGRAPHICS	5 MILES	7 MILES	10 MILES
POPULATION	67,984	130,500	283,019
HOUSEHOLDS	24,572	46,857	104,828
AVG. HH INCOME	\$94,516	\$95,639	\$90,464
5 YEAR GROWTH	23.2 %	22.8 %	22.7 %

TRAFFIC COUNTS				
Collection Street	Cross Street	Traffic Vol	Year	Distance
S Black Horse Pike	Karen Dr NW	25,067	2017	0.04 mi
S Black Horse Pike	Charm Rd	22,558	2014	0.64 m

The foregoing information was furnished to us by sources which we deem to be reliable, but no warranty or representation is made as to the accuracy thereof. Subject to correction of errors, omissions, change of price, prior sale or withdrawal from market without notice.