

WILLIAMSTOWN PLACE | BLACK HORSE PIKE & CORKERY LANE | WILLIAMSTOWN, NJ



## PROPERTY DESCRIPTION

- Location** Williamstown Place Block 3601, Lots 13, 15, 16, 17 & 18  
Black Horse Pike & Corkery Lane  
Williamstown, NJ 08094
- Size / SF Available** 61.0 Acres
- Sale Price** Call for more information
- Property / Area Description**
- High density residential and retail
  - Highly visible pad sites available for sale
  - Located within close proximity to Walmart
  - Located at the intersection of Route 42/ 322 & Main Street
  - Situated in a rapidly growing trade area
  - Convenient access to Atlantic City and New Jersey shore communities via Atlantic City Expressway, I-295 and Black Horse Pike
  - Located within a high income residential area in excess of \$90,000 per year
  - 177,000 people live within 7 miles
  - Located in a prime retail and commercial development area
  - Within close proximity to local health systems



## Contact Us

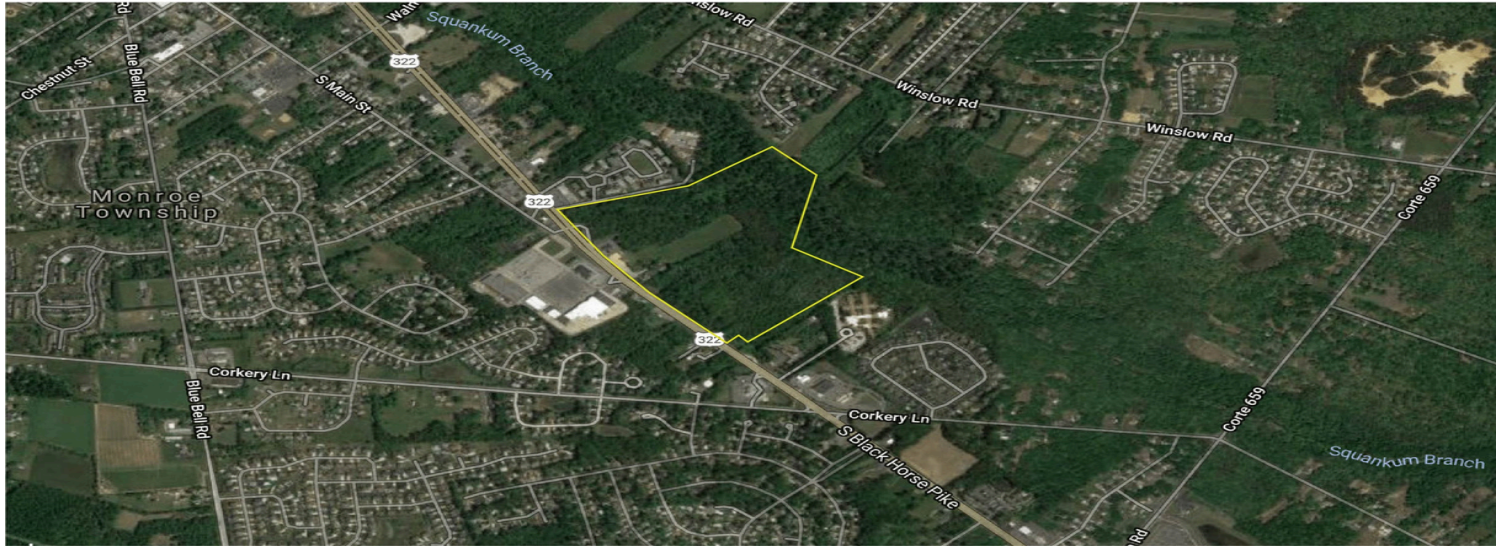
Jason Wolf  
Managing Principal  
856.857.6301  
jason.wolf@wolfcre.com chris.henderson@wolfcre.com

follow us:    

The foregoing information was furnished to us by sources which we deem to be reliable, but no warranty or representation is made as to the accuracy thereof. Subject to correction of errors, omissions, change of price, prior sale or withdrawal from market without notice.



## DEMOGRAPHICS



DEMOGRAPHICS	5 MILES	7 MILES	10 MILES
POPULATION	67,984	130,500	283,019
HOUSEHOLDS	24,572	46,857	104,828
AVG. HH INCOME	\$94,516	\$95,639	\$90,464
5 YEAR GROWTH	23.2 %	22.8 %	22.7 %

TRAFFIC COUNTS				
Collection Street	Cross Street	Traffic Vol	Year	Distance
S Black Horse Pike	Karen Dr NW	25,067	2017	0.04 mi
S Black Horse Pike	Charm Rd	22,558	2014	0.64 m

The foregoing information was furnished to us by sources which we deem to be reliable, but no warranty or representation is made as to the accuracy thereof. Subject to correction of errors, omissions, change of price, prior sale or withdrawal from market without notice.