



DOWNTOWN HADDONFIELD OFFICE BUILDING FOR SALE OR LEASE



15 POTTER STREET | HADDONFIELD, NJ



Wolf Commercial Real Estate
www.WolfCRE.com



PROPERTY DETAILS & HIGHLIGHTS

Property Address:	15 Potter Street, Haddonfield, NJ 08033
Property Type:	Two story office building
Building Size:	4,000 SF
Sale Price:	\$525,000
Lease Price:	\$18.00/SF Gross plus utilities and janitorial
Parking:	Private parking in rear with 12 parking spaces

PROPERTY OVERVIEW

- +/- 4000 SF two-story office building
- 3 separate office suites with 3rd suite in the rear of building having a private entrance
- Ideal location for a professional office user (i.e. attorney, accountant, etc.)
- Private rear parking lot with 12 spaces available, a rarity in Haddonfield!
- Recently replaced roof, HVAC and mechanical systems
- Entire exterior of building has been freshly painted

LOCATION OVERVIEW

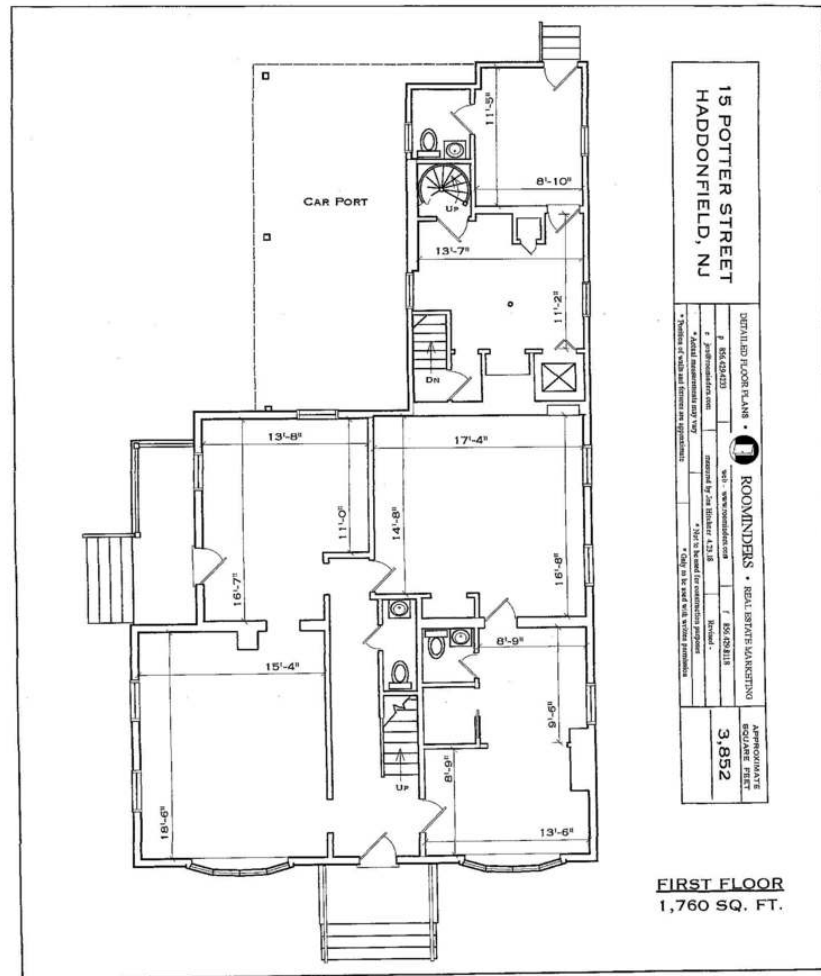
- Located in Historic downtown Haddonfield Business District and situated one property off highly visible Kings Highway
- Walking distance to all shops, banks, restaurants and professional offices
- Easy access to Kings Highway and Routes 70 & 295

Ryan Barikian
Senior Associate
856.857.6307
ryan.barikian@wolfcre.com



The foregoing information was furnished to us by sources which we deem to be reliable, but no warranty or representation is made as to the accuracy thereof. Subject to correction of errors, omissions, change of price, prior sale or withdrawal from market without notice.

1ST FLOOR PLAN

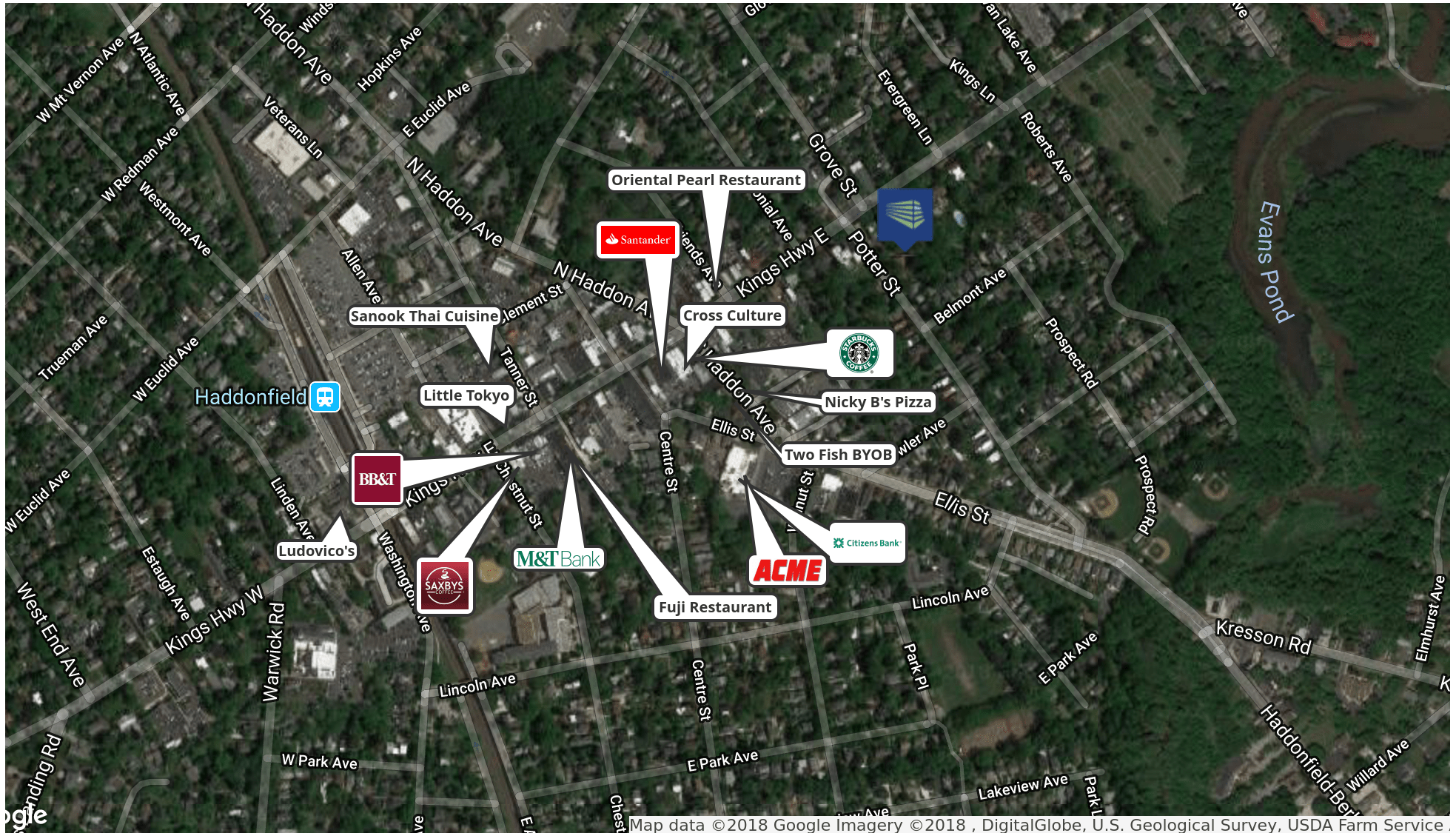


The foregoing information was furnished to us by sources which we deem to be reliable, but no warranty or representation is made as to the accuracy thereof. Subject to correction of errors, omissions, change of price, prior sale or withdrawal from market without notice.

[illegible]

MARLTON, NJ | PHILADELPHIA | KING OF PRUSSIA, PA

RETAILER MAP



The foregoing information was furnished to us by sources which we deem to be reliable, but no warranty or representation is made as to the accuracy thereof. Subject to correction of errors, omissions, change of price, prior sale or withdrawal from market without notice.