



PRICED REDUCED! BROKER BONUS!

2 KRESSON ROAD & 21 KRESSON ROAD | CHERRY HILL, NJ



PROPERTY DETAILS & HIGHLIGHTS

Property Address: 2 Kresson Road & 21 Kresson Rd, Cherry Hill, NJ 08034

Property Type: Retail

Space Available: 2 Kresson Road: +/-5,200 SF free standing building situated on +/- .39 acres. Includes Warehouse/Storage Area
21 Kresson Road: +/- .46 Acre Parking Lot

Sale Price: \$695,000

Signage: Storefront facade signage

PROPERTY OVERVIEW

- +/-5,200 SF free standing building situated on +/- .39 acres
- Also includes parking lot across street at 21 Kresson Road situated on +/- .46 acres
- Property offers storefront facade signage
- Available for immediate occupancy
- Well maintained property
- Abundant parking, highly visible signage, and within close proximity to many high-traffic retailers
- Located in a high demographic area of Cherry Hill Township
- Within close proximity to Haddonfield and Cherry Hill business districts, I-295 & Route 70
- Many amenities within the immediate area

Contact Us:

Jason M. Wolf
Managing Principal
856 857 6301
jason.wolf@wolfcre.com

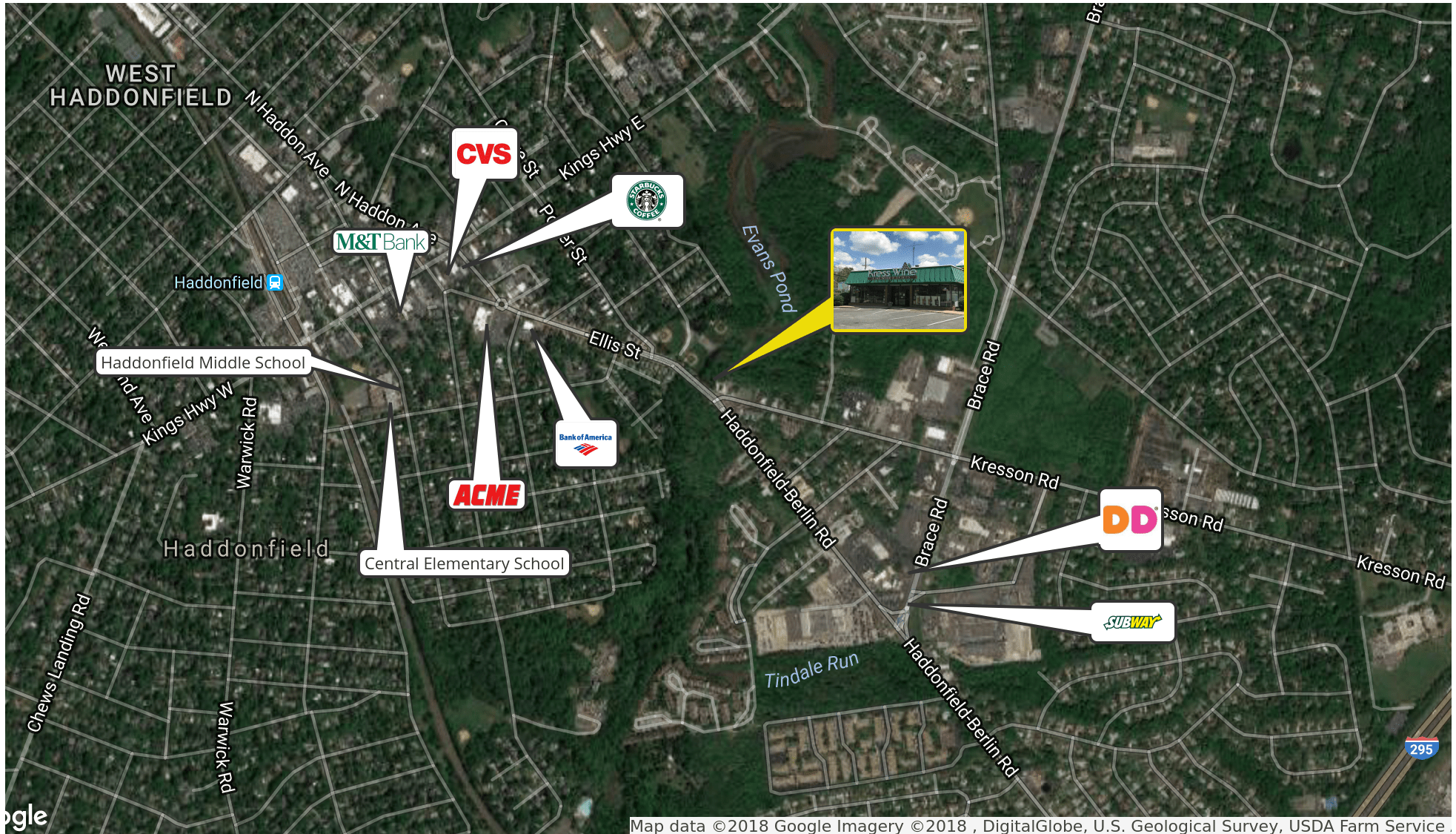
Christopher R. Henderson
Principal | Vice President
856 857 6337
chris.henderson@wolfcre.com



The foregoing information was furnished to us by sources which we deem to be reliable, but no warranty or representation is made as to the accuracy thereof. Subject to correction of errors, omissions, change of price, prior sale or withdrawal from market without notice.

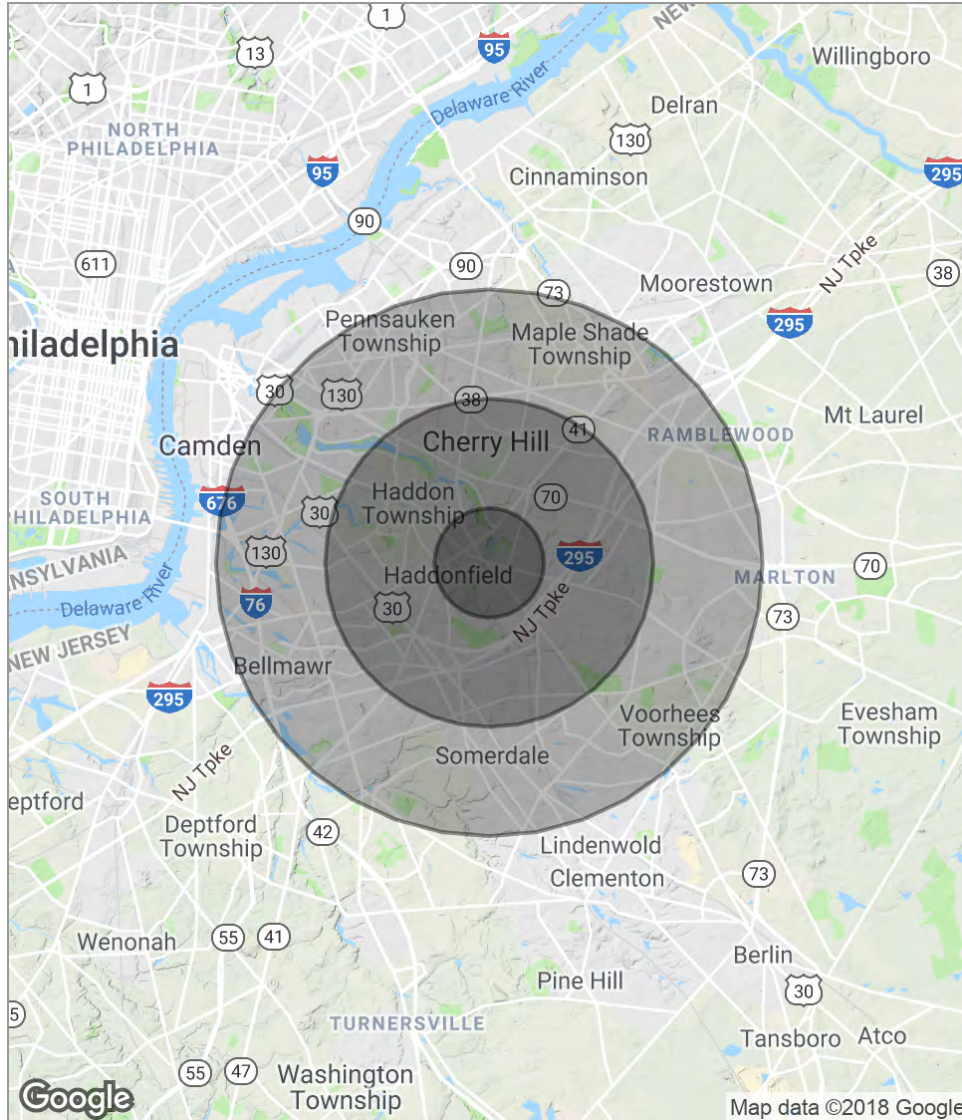


RETAILER MAP



The foregoing information was furnished to us by sources which we deem to be reliable, but no warranty or representation is made as to the accuracy thereof. Subject to correction of errors, omissions, change of price, prior sale or withdrawal from market without notice.

DEMOGRAPHICS MAP



POPULATION	1 MILE	3 MILES	5 MILES
Total population	10,631	100,872	303,318
Median age	41.7	41.8	40.5
Median age (male)	40.8	40.4	38.9
Median age (Female)	42.9	43.2	42.1
HOUSEHOLDS & INCOME	1 MILE	3 MILES	5 MILES
Total households	4,039	39,722	120,781
# of persons per HH	2.6	2.5	2.5
Average HH income	\$111,922	\$97,767	\$86,350
Average house value	\$355,390	\$303,898	\$268,708

* Demographic data derived from 2010 US Census

ADDRESS	AVG. DAILY VOLUME	MILES FROM SUBJECT PROP.
Potter St & Kresson Rd	23,238	0.08
Berlin Rd & Williard Ave	17,077	0.16

The foregoing information was furnished to us by sources which we deem to be reliable, but no warranty or representation is made as to the accuracy thereof. Subject to correction of errors, omissions, change of price, prior sale or withdrawal from market without notice.