



PREMIER CHERRY HILL RETAIL LEASING OPPORTUNITY



©Copyright MJ Scoppetta

2076 ROUTE 70 EAST | CHERRY HILL, NJ



Wolf Commercial Real Estate
www.WolfCRE.com



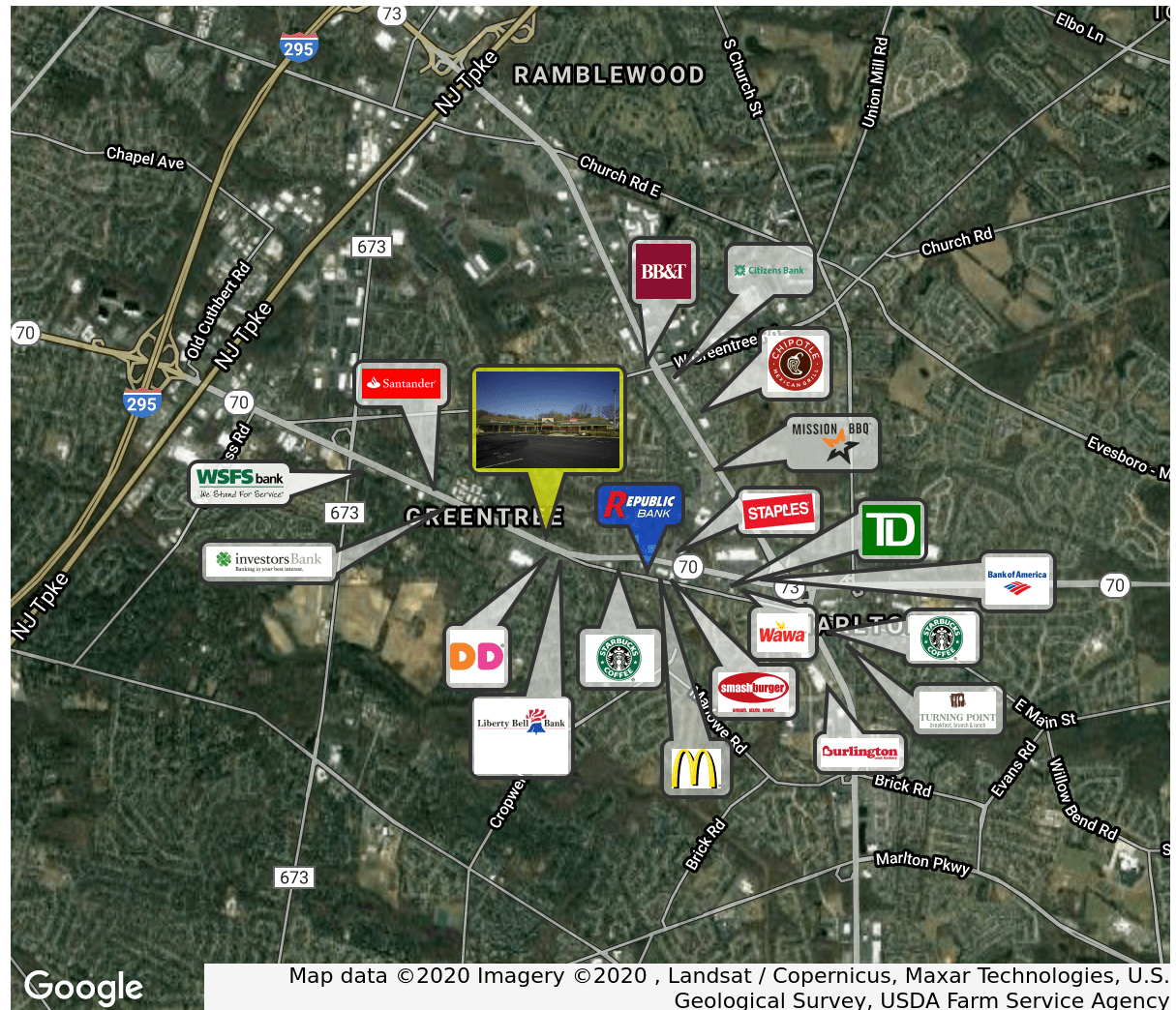
PROPERTY DESCRIPTION

Location	2076 Route 70 East Cherry Hill, NJ 08003
Size / SF Available	+/- 2,000 SF - 4,000 SF
Lease Price	Call for more information
Signage	Property offers freestanding pylon and storefront façade signage
Property / Area Description	<ul style="list-style-type: none"> • Major capital improvements & renovations in progress! • Property offers freestanding pylon and storefront facade signage • Available for immediate occupancy • Abundant parking, highly visible signage, and within close proximity to many high-traffic retailers • Within close proximity to Route 73, I-295 (Exit 34) and the NJ Turnpike • Located in a high demographic area of Cherry Hill Township • Join Lee Newman and Thriv salon & spa

Contact Us

Jason Wolf
Managing Principal
215.588.8800
jason.wolf@wolfcre.com

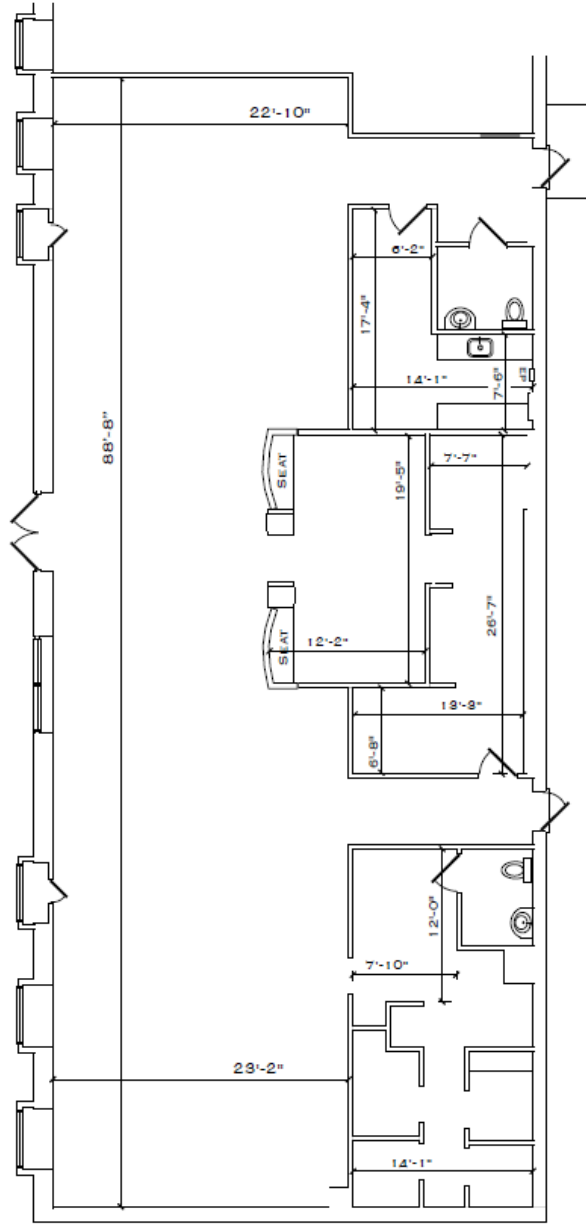
Bethany Brown
Vice President
267.226.6602
bethany.brown@wolfcre.com



follow us:    

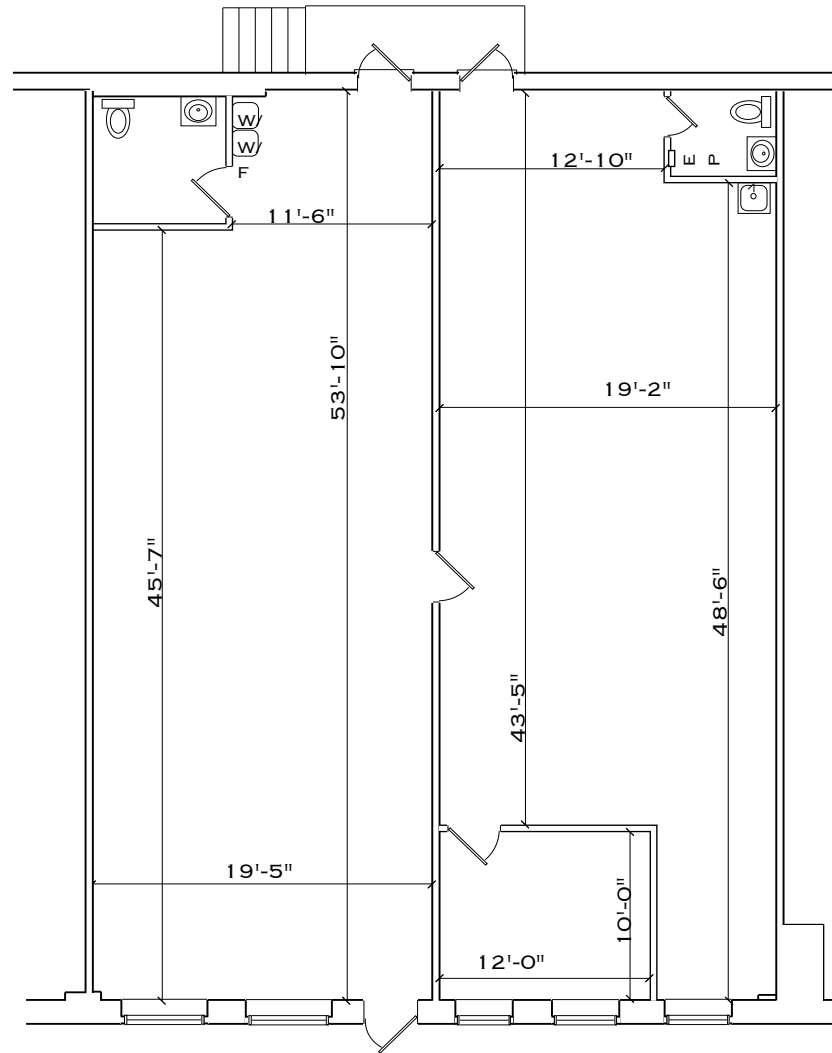
The foregoing information was furnished to us by sources which we deem to be reliable, but no warranty or representation is made as to the accuracy thereof. Subject to correction of errors, omissions, change of price, prior sale or withdrawal from market without notice.

FLOOR PLANS



SUITE 1
3,556 SQ. FT.

The foregoing information was furnished to us by sources which we deem to be reliable, but no warranty or representation is made as to the accuracy thereof. Subject to correction of errors, omissions, change of price, prior sale or withdrawal from market without notice.

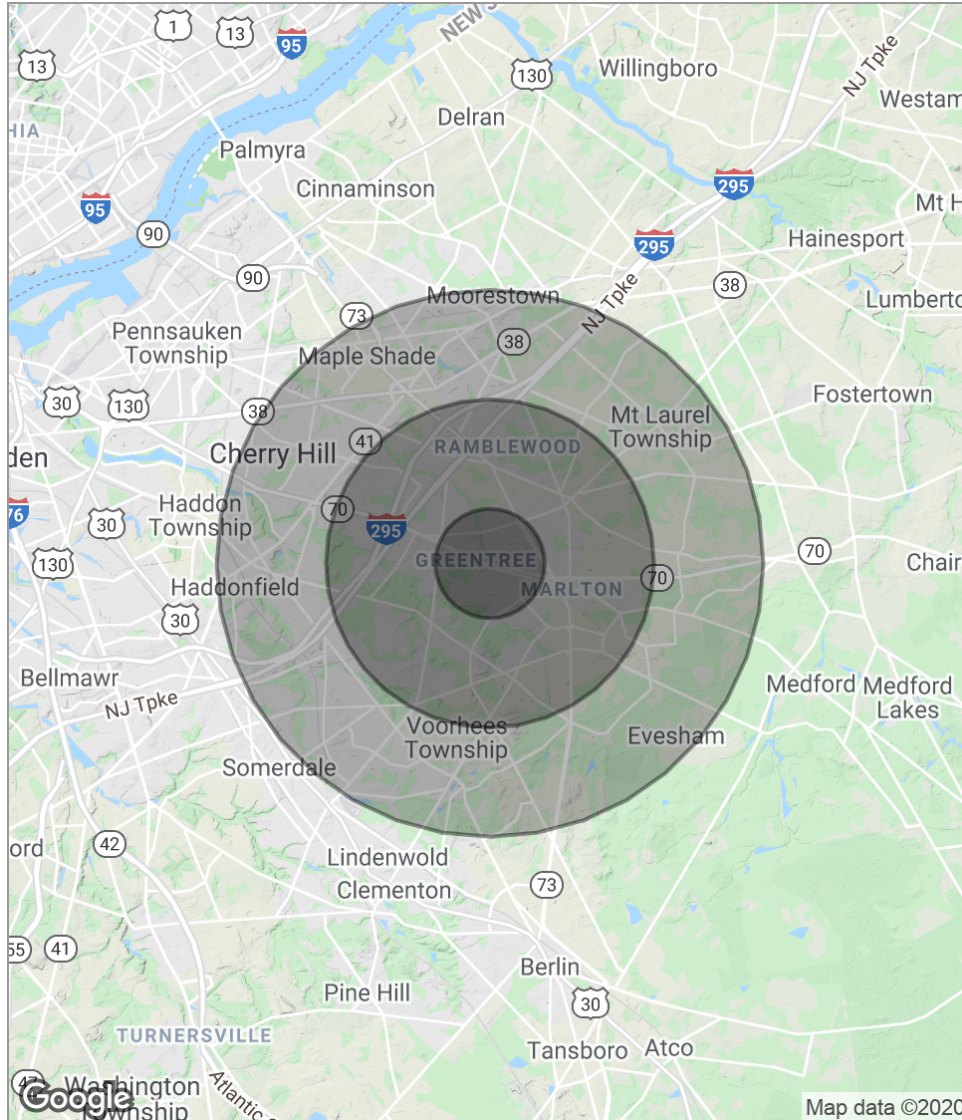


AVAILABLE

2,240 SQ. FT.

The foregoing information was furnished to us by sources which we deem to be reliable, but no warranty or representation is made as to the accuracy thereof. Subject to correction of errors, omissions, change of price, prior sale or withdrawal from market without notice.

DEMOGRAPHICS MAP



POPULATION	1 MILE	3 MILES	5 MILES
Total population	9,612	75,962	201,481
Median age	41.8	42.3	42.0
Median age (male)	40.8	40.7	40.5
Median age (Female)	42.5	44.1	43.6
HOUSEHOLDS & INCOME	1 MILE	3 MILES	5 MILES
Total households	3,459	27,482	76,883
# of persons per HH	2.8	2.8	2.6
Average HH income	\$109,872	\$116,056	\$104,967
Average house value	\$336,760	\$337,632	\$344,179

** Demographic data derived from 2010 US Census*

The foregoing information was furnished to us by sources which we deem to be reliable, but no warranty or representation is made as to the accuracy thereof. Subject to correction of errors, omissions, change of price, prior sale or withdrawal from market without notice.