



2076 ROUTE 70 EAST | CHERRY HILL, NJ

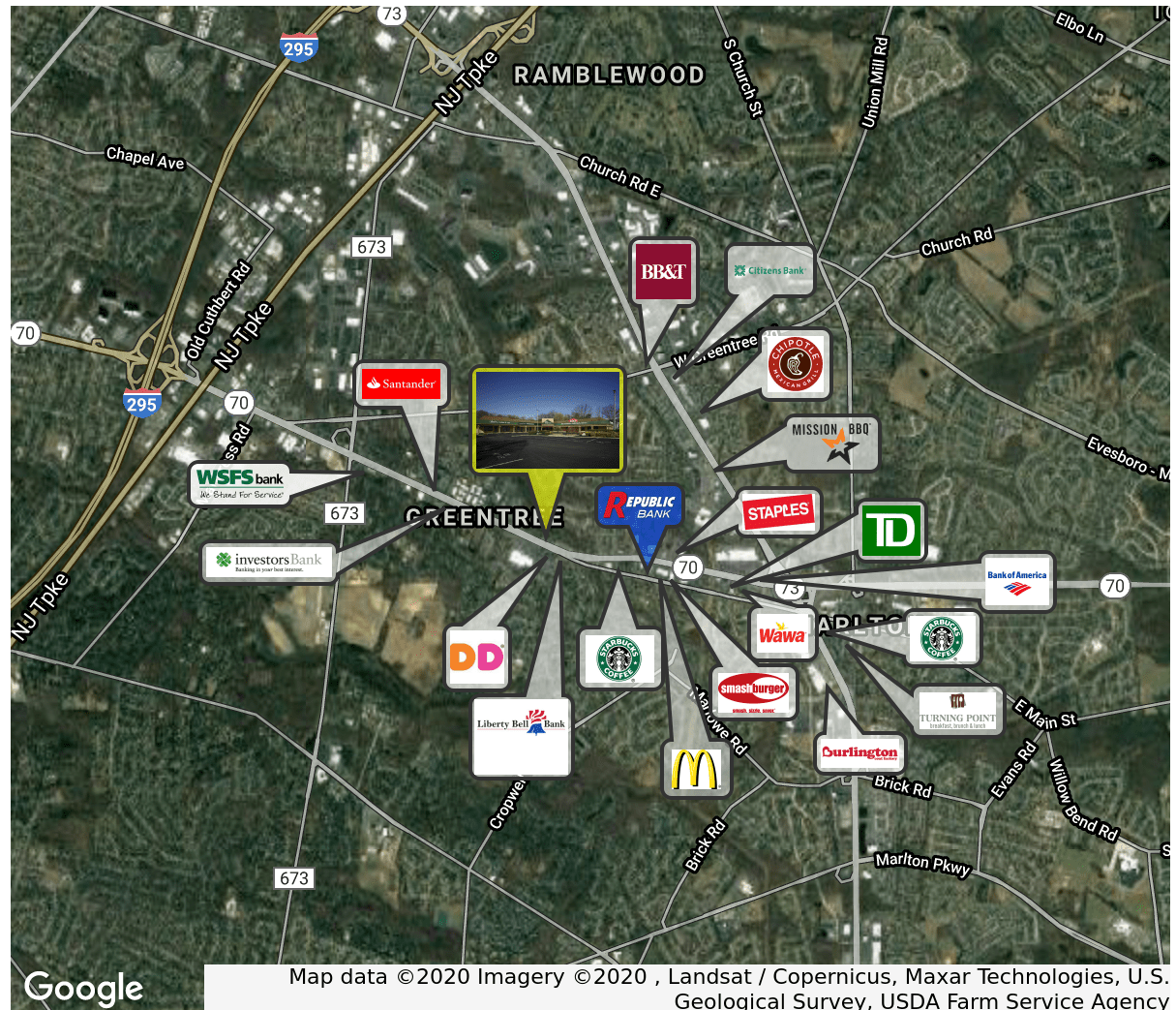
## PROPERTY DESCRIPTION

- Location** 2076 Route 70 East  
Cherry Hill, NJ 08003
- Size / SF Available** 2,240 SF
- Lease Price** Call for more information
- Signage** Property offers freestanding pylon and storefront façade signage
- Property / Area Description**
- Property offers freestanding pylon and storefront façade signage
  - Available for immediate occupancy
  - In-Line 2,240 SF unit
  - Well maintained and landscaped property
  - Abundant parking, highly visible signage, and within close proximity to many high-traffic retailers
  - Within close proximity to Route 73, I-295 (Exit 34) and the NJ Turnpike
  - Located in a high demographic area of Cherry Hill Township
  - Join Lee Nemwan, Thriv salon & spa and Tehen Womens clothing

## Contact Us

Bethany Brown  
Vice President  
856.857.6396  
bethany.brown@wolfcre

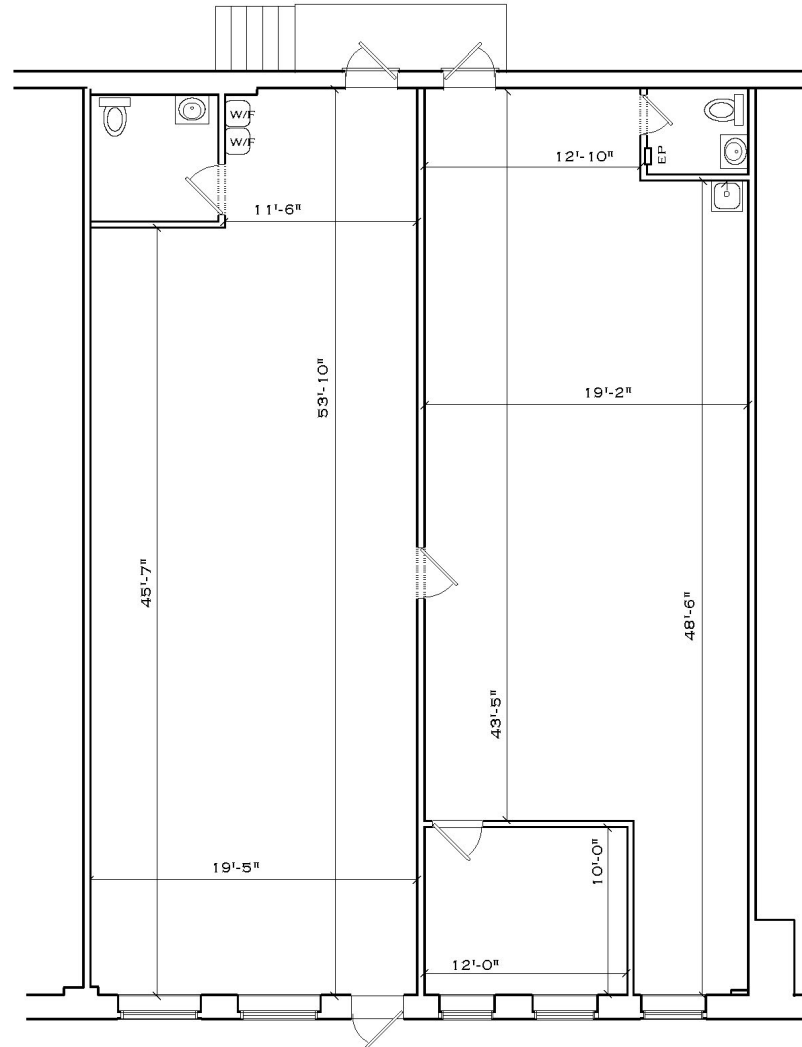
Jason Wolf  
Managing Principal  
856.857.6301  
jason.wolf@wolfcre.com



follow us:    

The foregoing information was furnished to us by sources which we deem to be reliable, but no warranty or representation is made as to the accuracy thereof. Subject to correction of errors, omissions, change of price, prior sale or withdrawal from market without notice.

FLOOR PLANS



The foregoing information was furnished to us by sources which we deem to be reliable, but no warranty or representation is made as to the accuracy thereof. Subject to correction of errors, omissions, change of price, prior sale or withdrawal from market without notice.





\* Demographic data derived from 2010 US Census



Wolf Commercial Real Estate  
**www.WolfCRE.com**

MARLTON, NJ | PHILADELPHIA | KING OF PRUSSIA, PA