



1140 WHITE HORSE ROAD | VOORHEES, NJ

Wolf Commercial Real Estate

follow us:



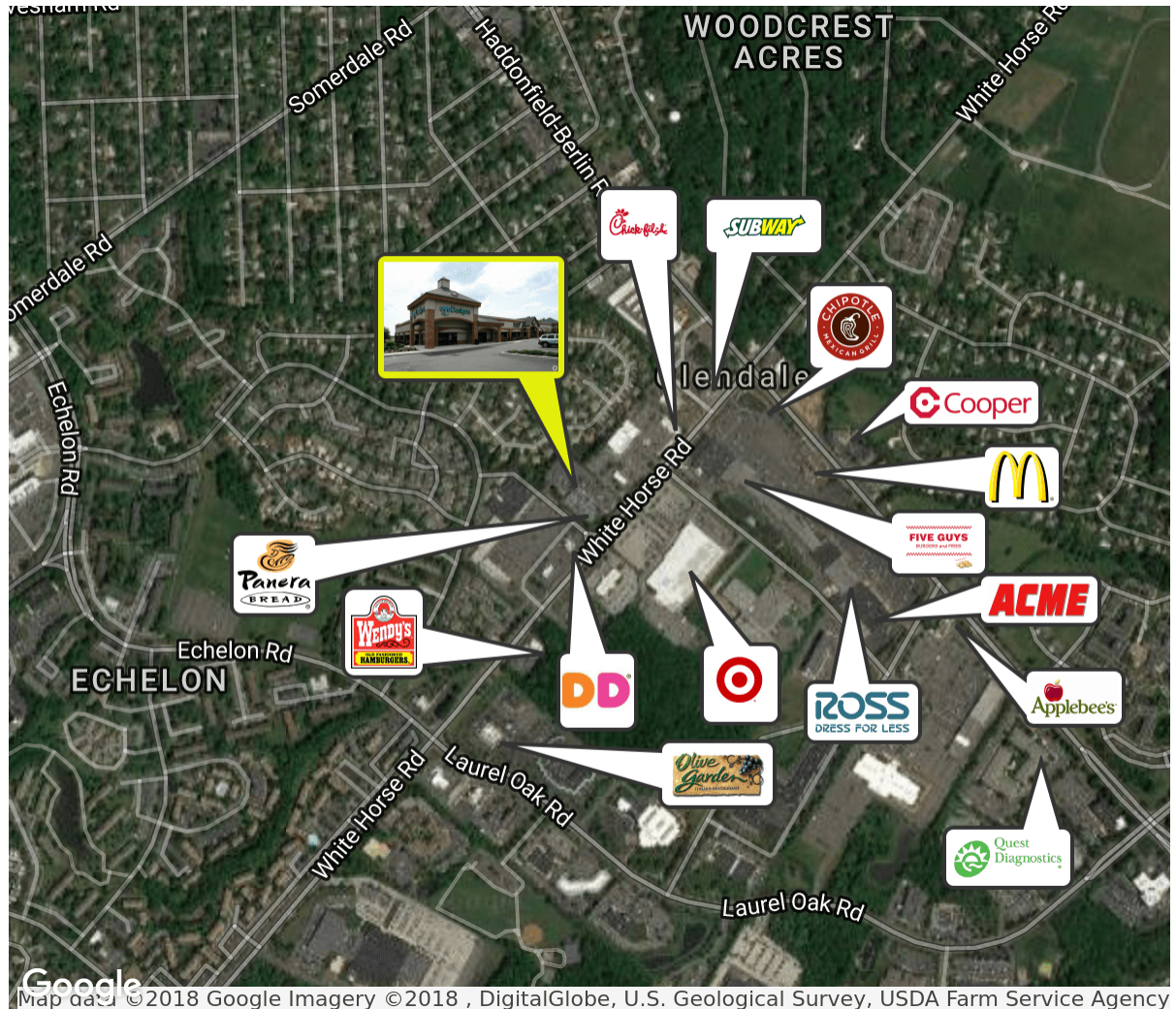
www.WolfCRE.com

PROPERTY DESCRIPTION

Location	1140 White Horse Road Voorhees, NJ 08043
Size / SF Available	6,000 SF
Lease Price	\$16.00 SF/ (NNN)
Occupancy	Available for immediate occupancy
Property / Area Description	<ul style="list-style-type: none"> • Join Panera Bread and Eye Designs • Located within close proximity to the Voorhees Corporate Center • Ideal for retail, medical or professional office use • Property sits along White Horse Road within immediate access to Haddonfield Berlin Road (561) and within close proximity to I-295, Route 70 and the NJ Turnpike • Location is surrounded by some of the region's most prestigious retail, health care providers and corporate office users • Building and pylon signage available • Well maintained and landscaped property • Abundant Parking

Contact Us

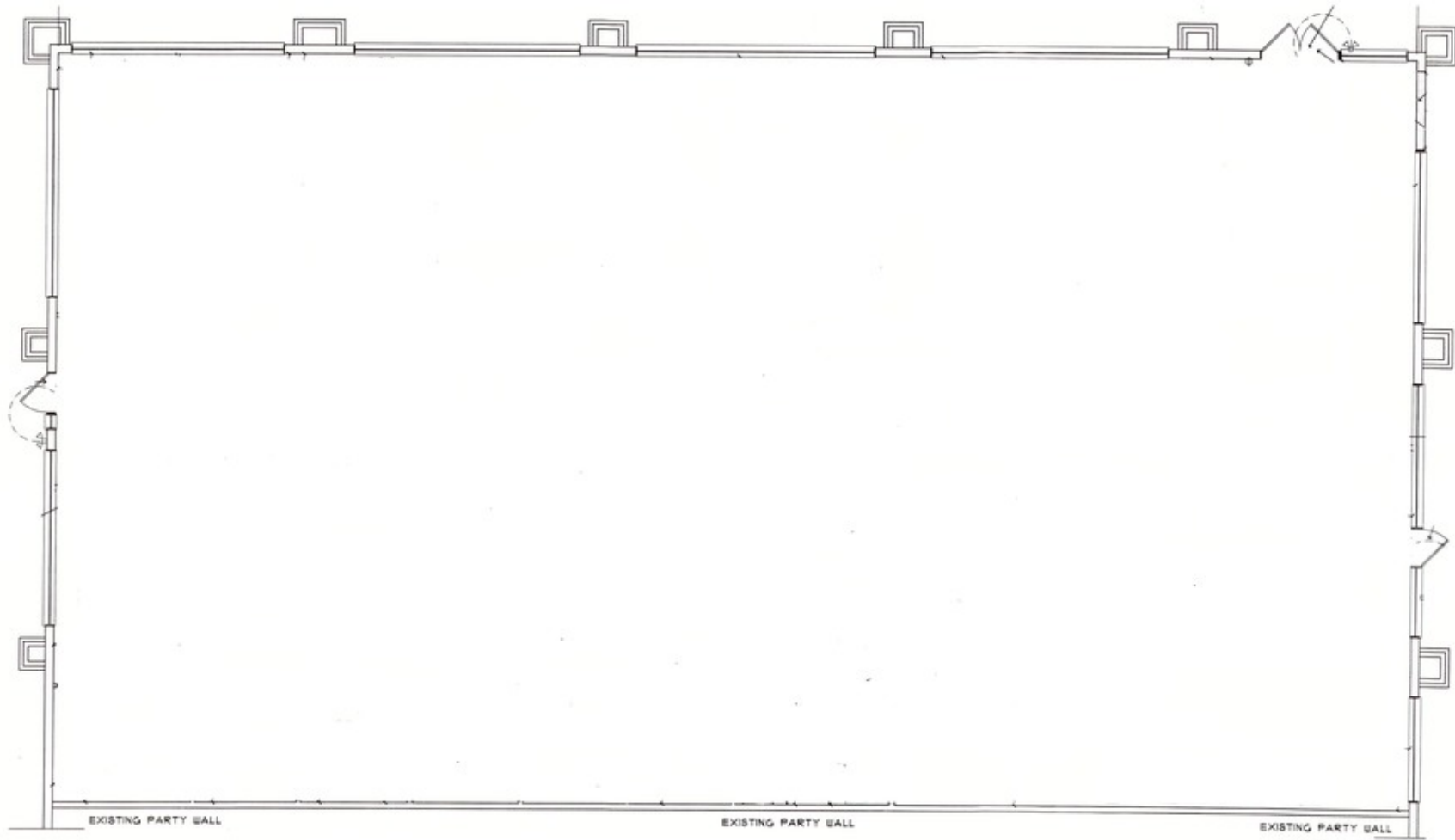
Christopher Henderson Principal & Vice President 856.857.6337 chris.henderson@wolfcre.com	Jason Wolf Managing Principal 856.857.6301 jason.wolf@wolfcre.com
--	--



follow us:    

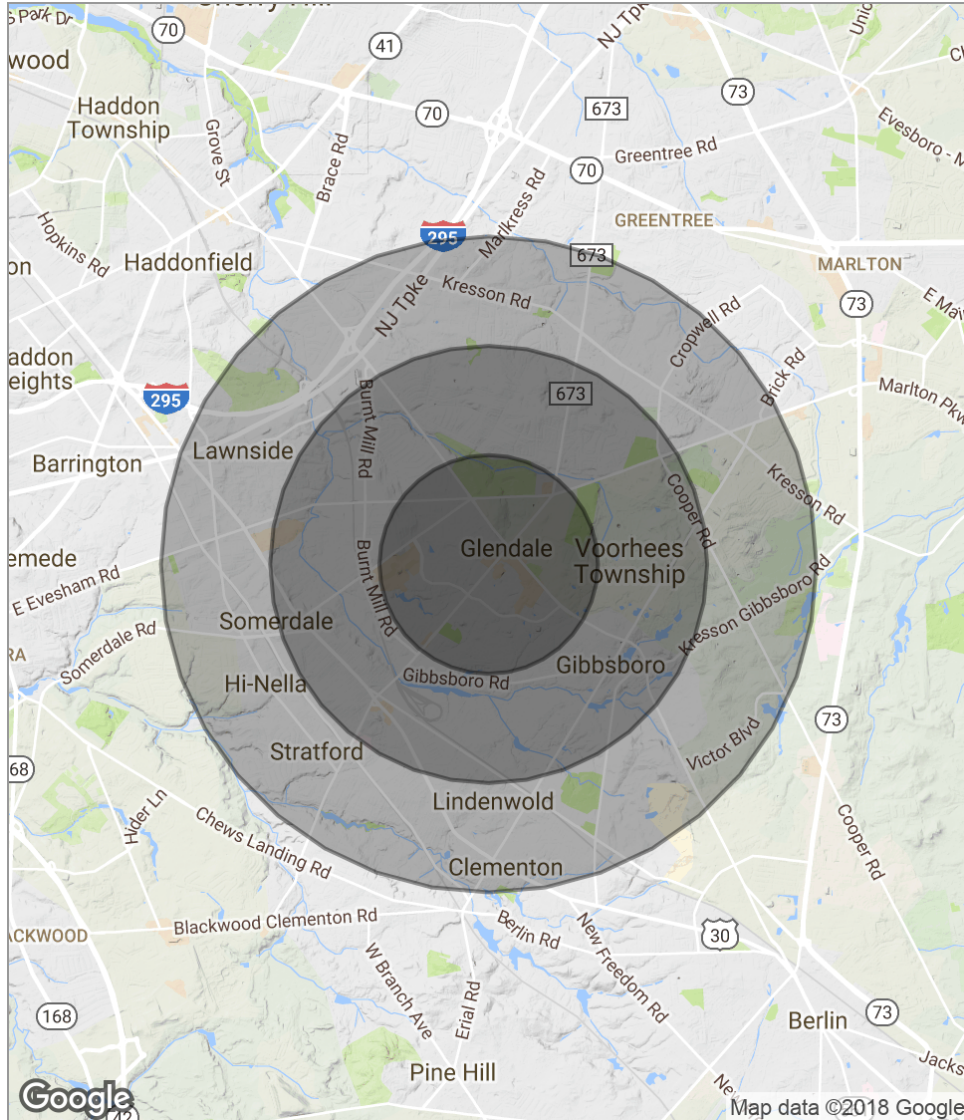
The foregoing information was furnished to us by sources which we deem to be reliable, but no warranty or representation is made as to the accuracy thereof. Subject to correction of errors, omissions, change of price, prior sale or withdrawal from market without notice.

FLOOR PLANS



The foregoing information was furnished to us by sources which we deem to be reliable, but no warranty or representation is made as to the accuracy thereof. Subject to correction of errors, omissions, change of price, prior sale or withdrawal from market without notice.

DEMOGRAPHICS MAP



POPULATION	1 MILE	2 MILES	3 MILES
Total population	9,465	35,684	82,930
Median age	40.7	40.9	40.3
Median age (male)	39.7	39.7	39.1
Median age (Female)	41.2	41.9	41.3
HOUSEHOLDS & INCOME	1 MILE	2 MILES	3 MILES
Total households	4,084	14,703	32,355
# of persons per HH	2.3	2.4	2.6
Average HH income	\$94,487	\$94,092	\$94,807
Average house value	\$340,698	\$306,951	\$295,743

* Demographic data derived from 2010 US Census



The foregoing information was furnished to us by sources which we deem to be reliable, but no warranty or representation is made as to the accuracy thereof. Subject to correction of errors, omissions, change of price, prior sale or withdrawal from market without notice.