



+/- 3.43 ACRE PREMIER LAND SITE FOR SALE



KRESSON GIBBSBORO RD & COOPER RD | VOORHESS | NJ

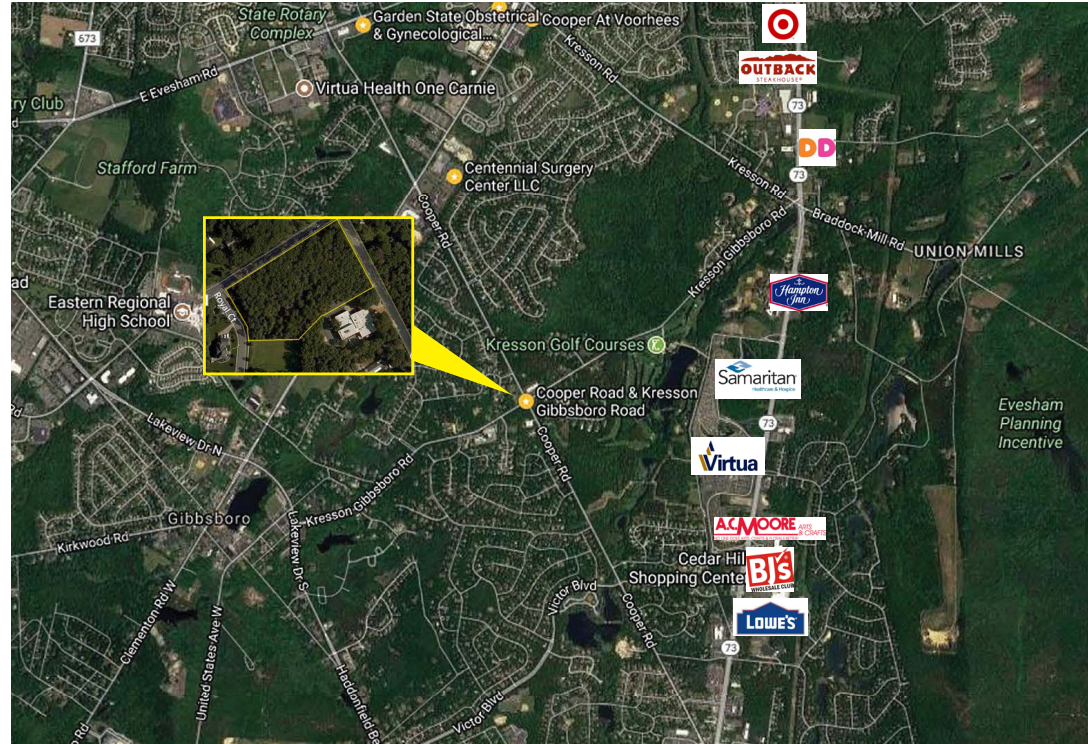
Wolf Commercial Real Estate

follow us:    

www.WolfCRE.com

Property Description

Location	Kresson Gibbsboro Rd & Cooper Rd Voorhees, NJ
Acres Available	+/- 3.43 Acres
Sale Price	\$985,000
Parking	Ample parking
Zoning	O-3
Property/Area Description	<ul style="list-style-type: none"> ▶ Prime Development Ground Opportunity ▶ Zoned O-3 ▶ Ideal for for Medical or Professional development ▶ Traffic light intersection ▶ +/-3.43 Acre parcel site ▶ This site benefits from superior demographics, prominent visibility, and ease of access ▶ Close proximity to Virtua Health System & Voorhees Towne Center



Contact Us

Christopher R. Henderson
Vice President
856 857 6337
chris.henderson@wolfcre.com

Jason M. Wolf
Managing Principal
856 857 6301
jason.wolf@wolfcre.com



The foregoing information was furnished to us by sources which we deem to be reliable, but no warranty or representation is made as to the accuracy thereof. Subject to correction of errors, omissions, change of price, prior sale or withdrawal from market without notice.