



INDUSTRIAL BUILDING FOR LEASE

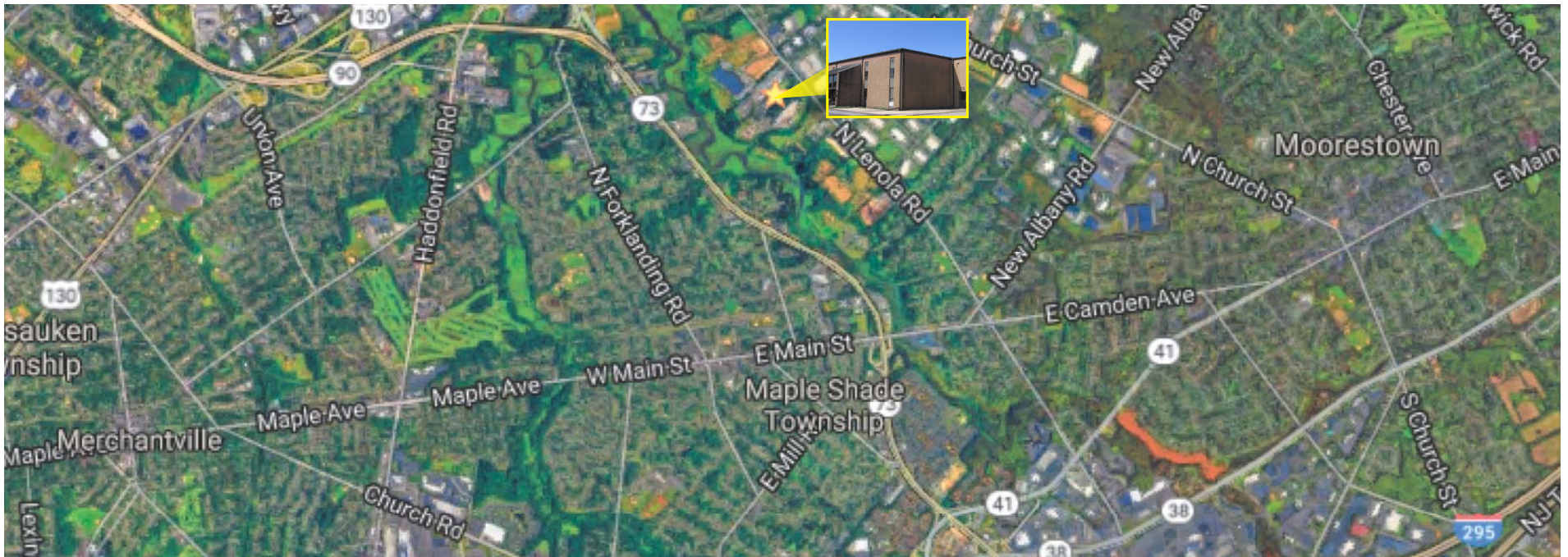


876-900 LENOLA ROAD | MOORESTOWN | NJ

Wolf Commercial Real Estate

follow us:    

www.WolfCRE.com



Property/Area Description

Location	876-900 Lenola Road Moorestown, NJ
SF Available	94,875 sf
Lease Price	\$3.75/sf NNN
Availability	Available for immediate occupancy
Parking	Abundant
Property Description	<ul style="list-style-type: none"> Industrial building consisting of 5,000 sf office and 90,000 sf of warehouse 32' Ceiling Height 2200 amps, 240/440 Volt, 3 phase 3- 25 Ton Cranes and 1- 15 Ton Crane 27' x 60' column width

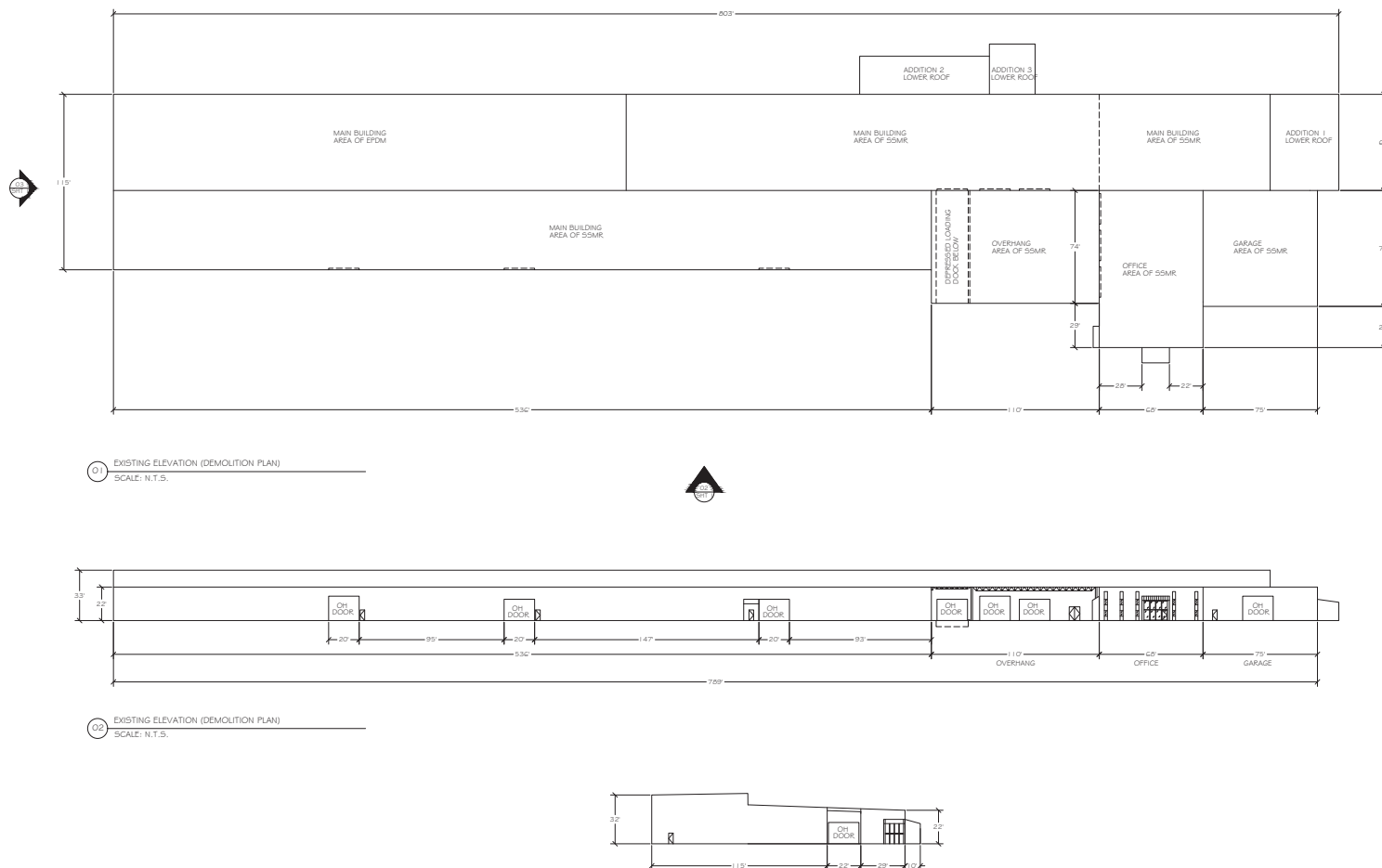
Property/Area Description

Area Description

- Roof - Standing seam/built-up
- Walls - Metal Panel, reinforced concrete floor
- 1 Tailgate loading (20'x14') / 8 drive in doors (2 - 20'x16' & 6- 20'x14')
- Water & Sewer - Municipal
- T&D industrial park is located on Lenola Road between Route 130 and Route 38 in Moorestown.
- The property sits among over 500 industrial served tenants
- T&D is located 5 miles east of Philadelphia, within 4 miles of the NJ Turnpike Exit 4 and I-295 exit both with access to route 73.

follow us:    

The foregoing information was furnished to us by sources which we deem to be reliable, but no warranty or representation is made as to the accuracy thereof. Subject to correction of errors, omissions, change of price, prior sale or withdrawal from market without notice.



Contact Us

Christopher R. Henderson, Vice President
856 857 6337
chris.henderson@wolfcre.com

Jason M. Wolf, Managing Principal
856 857 6301
jason.wolf@wolfcre.com

follow us: [f](#) [t](#) [in](#) [ig](#)

The foregoing information was furnished to us by sources which we deem to be reliable, but no warranty or representation is made as to the accuracy thereof. Subject to correction of errors, omissions, change of price, prior sale or withdrawal from market without notice.