

# Build:

# Success

# Real Estate



*New Jersey & Philadelphia Availabilities  
July 2017*





## Exclusive New Jersey Office Listings - July 2017

### LEASE

#### 460 Veterans Drive, Burlington, NJ



- ▶ Office/Flex space for lease in a well-located business park
- ▶ Zoned for light industrial, R&D and office uses
- ▶ Tailgate loading docks
- ▶ Immediate access to Burlington-Bristol Bridge and within close proximity to Routes 130, I-295 and NJ Turnpike
- ▶ Locally owned & managed

Space Available: 17,238 SF (Divisible)

[FOR MORE INFORMATION CLICK HERE](#)

### LEASE

#### 808 Market Street, Camden, NJ



- ▶ Full service office building in downtown Camden CBD.
- ▶ Within close proximity to Courthouse & Municipal Agencies. Lease incentives available.
- ▶ Immediate access to Ben Franklin Bridge, Routes 30, 38, 70 & 130.

Space Available: 6,600 SF-3rd Fl

[FOR MORE INFORMATION CLICK HERE](#)

### SUB-LEASE

#### Woodcrest Corp Center, 111 Woodcrest Road, Cherry Hill, NJ



- ▶ Class A 2 story office property
- ▶ Immediate access to I-295 via exits 31 and 32
- ▶ Direct access to PATCO Woodcrest station
- ▶ Exceptional corporate neighbors (Hewlett Packard and American Water Company)
- ▶ Open and efficient floor plan
- ▶ Common access (lobby, restrooms & elevator)
- ▶ Headquarters building visible from both road and PATCO High Speed rail line. 38,000 daily riders pass this site.

Space Available: 6,258 SF

[FOR MORE INFORMATION CLICK HERE](#)



## Exclusive New Jersey Office Listings - July 2017

### LEASE

#### 3001 Chapel Avenue West, Cherry Hill, NJ



- ▶ Possible sale/leaseback from current owner/occupant
- ▶ Located within immediate proximity of Kennedy Hospital
- ▶ Visible professional/medical building with monument signage
- ▶ Available for immediate occupancy

Space Available: 1st Floor - 4,980 SF

[FOR MORE INFORMATION CLICK HERE](#)

### LEASE

#### The Barclay Pavilion East & West Buildings, 15 Barclay Pavilion East, Cherry Hill, NJ



- ▶ Prime Office Space for Lease on heavily traveled Route 70
- ▶ Built-out Professional Offices and affordable rental rates
- ▶ Abundant parking
- ▶ Entrance and exit access from Route 70 East and West
- ▶ Easy Access to I-295 and the New Jersey Turnpike
- ▶ Newly renovated lobbies and hallways
- ▶ Free use of conference room
- ▶ Superior location with easy access to all of South Jersey via I-295

Space Available: 242-4,128 SF

[FOR MORE INFORMATION CLICK HERE](#)

### SALE

#### 4 Haddonfield Road , Cherry Hill, NJ (7730-7740 Maple Avenue, Pennsauken, NJ)



- ▶ +/- 3.14 Acre site with 2 buildings
- ▶ (17,000 & 13,000 SF)
- ▶ Access/Entrances on Haddonfield Road & Maple Ave
- ▶ Ideal redevelopment opportunity
- ▶ Public transportation available at the property and surrounding area. Within 1/2 mile to Cherry Hill Mall

Space Available: 17,000 SF (2 Story Building)  
13,000 SF (1 Story Building)

[FOR MORE INFORMATION CLICK HERE](#)

## Exclusive New Jersey Office Listings - July 2017

### SALE/LEASE

**PRICE REDUCED** 911 South Kings Highway, Cherry Hill, NJ



- ▶ Convenient access to Haddonfield and Cherry Hill business districts
- ▶ Available for immediate occupancy
- ▶ Monument Signage
- ▶ Recently renovated building with high-end interior finishes
- ▶ Locally owned and managed

Space Available: [+/-2,100 SF](#)

[FOR MORE INFORMATION CLICK HERE](#)

### SALE/LEASE

411 E Rt. 70, Cherry Hill, NJ



- ▶ Monument signage on Rt. 70
- ▶ Close proximity to I-295
- ▶ Ideal for Owner Occupant/Investor

Space Available: [+/- 1,524 SF 2nd Floor](#)

[FOR MORE INFORMATION CLICK HERE](#)

### LEASE

1309 Route 70 West, Cherry Hill, NJ



- ▶ Well located on Route 70 West
- ▶ Within close proximity to Garden State Park Shopping Center

Space Available: [1,000 SF](#)

[FOR MORE INFORMATION CLICK HERE](#)

## Exclusive New Jersey Office Listings - July 2017

### SALE/LEASE

#### Cherry Hill Office Center, 950 N Kings Highway, Cherry Hill, NJ



[FOR MORE INFORMATION CLICK HERE](#)

- ▶ Well maintained income producing 30,000 SF three-story office building available for sale or lease
- ▶ Ideal headquarter opportunity for owner occupant
- ▶ Building signage
- ▶ Recent renovations include a new roof, HVAC Systems, elevator and lobby areas
- ▶ Located on Kings Highway Business District providing easy access to Route 70, 38, I-295, NJ Turnpike
- ▶ Numerous amenities nearby including Ellisburg Shopping Center & The Cherry Hill Mall

Space Available: 2nd Floor - 4,000 SF (Owner Occupied)

### SALE

#### 455 Route 70 West, Cherry Hill, NJ



[FOR MORE INFORMATION CLICK HERE](#)

- ▶ Highly visible medical/professional office building located on Route 70
- ▶ Fully fit-out as medical office building in excellent move-in condition
- ▶ Situated on approximately .74 Acres
- ▶ Prominent monument signage visible from both directions of traffic
- ▶ Within close proximity to I-295, Ellisburg Shopping Center, Ponzio's Diner and many other amenities
- ▶ Large parking lot with easy ingress/egress

Space Available: 5,642 SF

### LEASE

#### South Jersey Medical Center, 1401 East Route 70, Cherry Hill, NJ



[FOR MORE INFORMATION CLICK HERE](#)

- ▶ Located on Route 70 next to Barclay Shopping Center providing for immediate access to I-295, providing for convenient North/South access.
- ▶ Within minutes drive to all local health systems (Virtua, Lourdes, Kennedy, UMDNJ and Cooper) Locally owned & managed

Space Available: 774 SF  
1,538 SF  
1,961 SF  
2,881 SF



## Exclusive New Jersey Office Listings - July 2017

### SALE/LEASE

#### 201 Haddonfield-Berlin Road, Cherry Hill, NJ



- ▶ Well maintained professional office building
- ▶ Within close proximity to Haddonfield business district, I-295 & Route 70
- ▶ Visible building off Route 561 with monument signage
- ▶ Many amenities within the immediate area.

Space Available: 1,500-5,300 SF

[FOR MORE INFORMATION CLICK HERE](#)

### LEASE

#### 1209 Route 70 West, Cherry Hill, NJ



- ▶ Recently renovated professional office building
- ▶ Signage on Route 70
- ▶ Available for immediate occupancy
- ▶ Ideal for various professional uses
- ▶ Ample parking

Space Available: 1st FL - 1,500 SF 2nd FL - 1,200 SF SF

[FOR MORE INFORMATION CLICK HERE](#)

### LEASE

#### 4 Executive Campus, 771 Cuthbert Boulevard, Cherry Hill, NJ



- ▶ Available for immediate occupancy
- ▶ Monument and building signage available
- ▶ Building amenities include two entrances, street level and covered parking area
- ▶ Ideal headquarter opportunity
- ▶ Recent renovations and capital upgrades
- ▶ Providing easy access to Route 70, 38, I-295, NJ Turnpike and Ben Franklin Bridge
- ▶ Located in the heart of the Cherry Hill Business District. Within close proximity to The Cherry Hill Mall, Garden State Towne Center and Ellisburg Shopping Center

Space Available: [1st Floor: +/- 3,250-11,626 SF \(Divisible\)](#)  
[2nd Floor: +/- 10,079 SF \(Divisible\)](#)

[FOR MORE INFORMATION CLICK HERE](#)

## Exclusive New Jersey Office Listings - July 2017

### LEASE

#### 1949 Marlton Pike East, Cherry Hill, NJ



- ▶ Located along Route 70 (Marlton Pike) in Cherry Hill's Central Business District
- ▶ Convenient access to area shopping, hotels, and restaurants
- ▶ Immediate access to I-295, providing for convenient North/South access
- ▶ Within close proximity to all local health systems
- ▶ Well located multi-tenanted medical office complex with on-site ownership and management
- ▶ Join Advocare Pediatrics & Paul Adler Family Dentistry

Space Available: Second Floor: 914 SF

[FOR MORE INFORMATION CLICK HERE](#)

### LEASE

#### Station Office Building, 900 Haddon Avenue, Collingswood, NJ



- ▶ Newly renovated lobby & common areas
- ▶ Local ownership & management
- ▶ Adjacent to PATCO High Speed Line
- ▶ Full service aggressive rental rate
- ▶ Close proximity to Philadelphia, Route 38, 70 & 130

Space Available: 302-16,758 SF

[FOR MORE INFORMATION CLICK HERE](#)

### SALE

#### FULLY LEASED INVESTMENT OPPORTUNITY - 200 Haddonfield Berlin Road, Gibbsboro, NJ



- ▶ Garden style office condo complex located at signalized intersection on 561
- ▶ 4.75/1000 SF parking ratio
- ▶ +/- 5,438 SF Fully Leased Incoming Producing Investment

Space Available: 5,438 SF (Divisible)

[FOR MORE INFORMATION CLICK HERE](#)



## Exclusive New Jersey Office Listings - July 2017

### SALE/LEASE

#### 500 Grove Street, Haddon Heights, NJ



- ▶ Located Immediately off I-295 Exit 29 & Route 30
- ▶ Excellent Location in a recently renovated office building with quality neighboring tenants

Space Available: 3,459 SF

[FOR MORE INFORMATION CLICK HERE](#)

### LEASE

#### 6 MONTHS FREE RENT 515 Grove Street, Haddon Heights, NJ



- ▶ Located immediately off Route 30 and Exit 29 of I-295.
- ▶ Affordable rental rates in a well located mid-rise office complex.
- ▶ Available for immediate occupancy.

Space Available:

3rd Floor - 1,050 SF   1st Floor - 2,800 SF   3rd Floor - 4,670 SF

[FOR MORE INFORMATION CLICK HERE](#)

### LEASE

#### 975 Tuckerton Road, Marlton, NJ



- ▶ Newly constructed multi-tenanted medical office building with 2 shell suites available
- ▶ Fit-out allowance included
- ▶ Ample parking
- ▶ Close proximity to Virtua Marlton Hospital, Route 70, Route 73, I-295, NJ Turnpike
- ▶ Located across from Evesham Township municipal building
- ▶ Situated within a densely populated residential area

Space Available: 2,472 SF   2nd Floor - 1,818 SF

[FOR MORE INFORMATION CLICK HERE](#)

## Exclusive New Jersey Office Listings - July 2017

### LEASE

#### F.V. Evans Elementary School, 400 Route 73, Marlton, NJ



- ▶ The F.V. Evans Elementary School is planning to close at the end of June 2017
- ▶ Campus-like atmosphere offering excellent visibility on the heavily traveled Route 73 in Marlton New Jersey
- ▶ The school has undergone several additions and renovations including a new wing, playground and roof
- ▶ The inside of Evans school has been constantly updated and refreshed
- ▶ Bus drop off area - 87 parking spaces
- ▶ Multiple ball fields and play areas

Space Available: 78,213 SF Main School Building - situated on an approximate 11.86 acre site - 41 Classrooms - 6,248 square foot gym 2,172 square foot library

[FOR MORE INFORMATION CLICK HERE](#)

### LEASE

#### 701 & 703 East Main Street, Moorestown, NJ



- ▶ Stand alone professional office building with ample parking
- ▶ Available for immediate occupancy
- ▶ Street pylon and building signage available
- ▶ Located in the heart of Moorestown - within walking distance to Virtua Women's Primary Care and Wellness Center
- ▶ Convenient access to Centerton Square containing retail, restaurants and other amenities
- ▶ Located off Route I-295 and Route 38 with easy access to the New Jersey Turnpike

Space Available: 2,300 SF (First Floor), Building 703: 1,100 SF (Second Floor)

[FOR MORE INFORMATION CLICK HERE](#)

### LEASE

#### PREMIER MOORESTOWN LOCATION! 236 West Route 38, Moorestown, NJ



- ▶ Single story office building with exterior and interior suite access
- ▶ On-Site ownership and management
- ▶ Ideal location for medical/professional user
- ▶ Available for immediate occupancy
- ▶ Building and suite signage available
- ▶ Located within close proximity to The Westin, Doubletree Hotel, Aloft Mount Laurel Hotel, Miller's Ale House, Starbucks, Moorestown Mall and East Gate Square
- ▶ Convenient access to Route 73, I-295 & NJ Turnpike

Space Available: 3,665 SF

[FOR MORE INFORMATION CLICK HERE](#)



## Exclusive New Jersey Office Listings - July 2017

### LEASE

#### Virtua Health & Wellness Center - Moorestown, 401 Young Avenue, Moorestown, NJ



- ▶ Strategically located class "A" medical center is in the heart of Moorestown
- ▶ The Health & Wellness Center consists of 181,236 SF on three floors
- ▶ Other tenants include primary care, cardiology, radiology, urgent care and a full-service fitness center
- ▶ 1,900 visitors per day, café, child care center and spa also on-site
- ▶ Competitive lease rates and generous Tenant Improvement allowance
- ▶ Ideally located at Exit 40 (Route 38) of I-295 in the heart of Burlington County - Situated directly across from Wegmans, Target, Costco and other national retailers
- ▶ Restaurants located within the Centerton Square Shopping Center
- ▶ Owned & managed by Welltower, Inc. (NYSE:HCN)

Space Available: Suite 175: 3,900 SF Suite 350: 4,709 SF

[FOR MORE INFORMATION CLICK HERE](#)

### LEASE

#### 120 Madison Avenue, Mount Holly, NJ



- ▶ Available for immediate occupancy
- ▶ Suite signage available - abundant parking
- ▶ Medical / Professional office suite - Class A medical office build out
- ▶ 3 patient exam rooms, dedicated lab area, 1 private executive office, billing, administrative and filing area, reception and waiting room area, 1 Bathroom
- ▶ Excellent move in condition
- ▶ Across from Virtua Memorial Hospital of Mt. Holly
- ▶ Easy access to Route 38 and conveniently located near Crossroads Plaza and other retailers and restaurants

Space Available: +/-1,850 SF

[FOR MORE INFORMATION CLICK HERE](#)

### LEASE

#### Roberts Mill Plaza, 3701 Church Road, Mount Laurel, NJ



- ▶ Located at signalized intersection on Church Road
- ▶ Minutes from Routes 73, 38 and I-295 - Public transportation on site
- ▶ Surrounded by large apartment communities and homes
- ▶ Traffic count exceeding 20,000 VPD
- ▶ Ideal location for restaurant, florist, wireless store, martial arts, tanning salon, yoga, ice cream parlor or medical/professional offices

Space Available: Office - 824 & 1,580 SF Retail - 775 SF

[FOR MORE INFORMATION CLICK HERE](#)

## Exclusive New Jersey Office Listings - July 2017

### LEASE

#### 532 Fellowship Road, Mount Laurel, NJ



- ▶ Immediate access to I-295, New Jersey Turnpike and Route 73
- ▶ Located across from The Westin & Doubletree Hotels and adjacent to Aloft Mount Laurel Hotel, Miller's Ale House & Starbucks
- ▶ Other tenants in office complex include Department of Homeland Security, Social Security Administration & Honeywell
- ▶ 9/1000 Parking Ratio
- ▶ Locally owned & managed by Pennmark Management Company

Space Available: 2,571 SF (Training Center), 2,751 SF, 2,645 SF, 8,625 SF

[FOR MORE INFORMATION CLICK HERE](#)

### LEASE

#### Kevon Office Center I, 2500 McClellan Boulevard, Pennsauken, NJ



- ▶ Lobby directory and suite signage available. Beautiful grand entrance, a three-story sun-lit glass atrium
- ▶ On-site maintenance personnel & newly renovated common areas
- ▶ This building was awarded an Energy Star label in 2012 for its operating efficiency
- ▶ Kevon Office Center is just a short walk away from the beautiful Cooper River Park and has employee picnic area on beautifully designed landscape
- ▶ There is also a wide array of shopping centers, restaurants, convenience stores and service establishments readily accessible and conveniently located from Ben Franklin Bridge and Center City Philadelphia

Space Available: +/-1,000-8,000 SF

[FOR MORE INFORMATION CLICK HERE](#)

### LEASE

#### 1100 North Black Horse Pike, Runnemede, NJ



- ▶ First Floor currently operating as a Funeral Home
- ▶ Second Floor currently serves as the private residence for owner
- ▶ Excellent versatility, very close to multiple, major highways
- ▶ Currently operating as a funeral home/private residence-"The owner will be relocating locally"
- ▶ The first floor funeral home consist of: grand entrance with crystal chandelier, foyer, office, family room, Meaningful Memory Room (custom showroom), and complete handicapped ladies and gentlemen lavatory

Space Available: +/- 6,309 SF

[FOR MORE INFORMATION CLICK HERE](#)



## Exclusive New Jersey Office Listings - July 2017

### LEASE

#### Virtua Health & Wellness Center Washington Twp, 239 Hurfville Crosskeys Rd, Sewell, NJ



- ▶ Strategically located class "A" medical center is in the heart of Washington Township
- ▶ Virtual Health & Wellness Center is a 255,570 SF Class "A" full-service health & wellness center
- ▶ Other tenants include Primary Care, Cardiology, Radiology, Surgery, Obstetrics and Gynecology, Urgent Care, and Lab Services
- ▶ Competitive lease rates and generous Tenant Improvement allowance
- ▶ Close proximity to the Black Horse Pike, Atlantic City Expressway and Route 55
- ▶ Owned & managed by Welltower, Inc. (NYSE:HCN)

Space Available: +/-1,000 - 14,000 SF

[FOR MORE INFORMATION CLICK HERE](#)

### LEASE

#### 11 Enterprise Court, Sewell, NJ



- ▶ Warehouse/Flex building opportunity
- ▶ Located within close proximity to Routes 47, 55, AC Expressway & I-295
- ▶ Available for immediate occupancy
- ▶ Warehouse space also available with 2 drive-in doors and loading dock

Space Available: +/-1,380 - 9,330 SF- Office/Flex

[FOR MORE INFORMATION CLICK HERE](#)

### SALE

#### UNDER AGREEMENT - 710 Laurel Road, Stratford, NJ



- ▶ Well-located +/-20.5 Acre Campus for Sale w/25,200 SF Office/ School building
- ▶ Located within close proximity to Rowan University School of Osteopathic Medicine & Kennedy Health Hospital University
- ▶ Easy access to Route 30 (White Horse Pike) and Lindenwold PATCO station
- ▶ Available for immediate possession

Space Available: 25,200 SF (Office/School) +/- 10 Acres

[FOR MORE INFORMATION CLICK HERE](#)

## Exclusive New Jersey Office Listings - July 2017

### LEASE

1173 E. Landis Avenue, Vineland, NJ



- ▶ Located at intersection of Landis and Main. Within walking distance to Maintree Commons Shopping Center.

Space Available: Building B - 1,070 SF, 1,040 SF  
Building C - 2,669 SF, 700 SF

[FOR MORE INFORMATION CLICK HERE](#)

### SUB-LEASE

226 W. Landis Avenue, Vineland, NJ



- ▶ Class A Sub-Lease located in the heart of the Vineland Business District
- ▶ Lease term expires 10/31/2017
- ▶ Available for immediate occupancy
- ▶ Within walking distance to retail, restaurants and other professional services

Space Available: +/- 11,426 SF

[FOR MORE INFORMATION CLICK HERE](#)

### LEASE

157 Route 73, Voorhees, NJ



- ▶ Newly renovated highly visible medical/professional building
- ▶ Located directly next to Virtua Hospital Voorhees Campus
- ▶ Surrounded by healthcare & professional users
- ▶ Monument signage fronting on Route 73
- ▶ Join the OB/GYN Specialists

Space Available: 3,384 SF (Divisible)

[FOR MORE INFORMATION CLICK HERE](#)



## Exclusive New Jersey Office Listings - July 2017

### SALE

#### PRICE REDUCED! 326 Route 73, Voorhees, NJ



- ▶ Recently renovated 6,862 square foot medical/office building
- ▶ Situated on +/-2.56 acres with 10,000sf approved pad site for future development
- ▶ Ideal for a variety of medical and professional office uses
- ▶ Monument signage fronting on the heavily traveled route 73
- ▶ Immediate access to Virtua Hospital Voorhees Campus
- ▶ Surrounded by healthcare & professional users
- ▶ Within close proximity to many retail stores, restaurants and health care practices - convenient access to Route 70, I-295, New Jersey Turnpike and the Atlantic City Expressway

Space Available: 6,862 SF

[FOR MORE INFORMATION CLICK HERE](#)

### SALE

#### PRICE REDUCED! 1004 Laurel Oak Road, Voorhees, NJ



- ▶ Located within the Voorhees Corporate Center, newly constructed modern building
- ▶ Ideal for adult and/or child daycare, educational or medical use
- ▶ Facility offers outdoor play area, large class rooms, parking and covered entrance.
- ▶ Property sits between White Horse Road and Haddonfield Berlin Road (561)
- ▶ Location is surrounded by some of the region's most prestigious health care providers and corporate office users
- ▶ Building and monument signage
- ▶ Conveniently located within close proximity to I-295, Route 70 and the NJ Turnpike

Space Available: 13,092 SF

[FFOR MORE INFORMATION CLICK HERE](#)

### SALE

#### 1 Britton Place, Unit 3, Voorhees, NJ



- ▶ Medical Office Condo for sale or lease in established Echelon Professional Center
- ▶ Available for Immediate Occupancy
- ▶ Small placard signage available by front door/Space available on center's sign at entrance
- ▶ Ample parking for staff and patients/guests
- ▶ Office includes Four (4) Exam Rooms, One (1) Private Office, Two (2) Restrooms, Waiting Room with Bathroom, Reception Area, Work Station for Staff, Supply Room and Break Room

Space Available: 1,100 SF

[FOR MORE INFORMATION CLICK HERE](#)

## Exclusive New Jersey Office Listings - July 2017

### SALE

#### 520 Burnt Mill Road, Voorhees, NJ



- ▶ Sale/Leaseback Investment Opportunity (7 Year Term)
- ▶ Fully occupied by long-term tenant with excellent financials
- ▶ Excellent ROI-9.2% Cap Rate
- ▶ 2 story office building situated on .73 Acres
- ▶ 6/1000 parking ratio
- ▶ Located in Voorhees Township within close proximity to I-295, PATCO Speed line & Philadelphia
- ▶ Adjacent to Voorhees Towne Center

Space Available: +/-9,200 SF

[FOR MORE INFORMATION CLICK HERE](#)

### LEASE

#### UNDER NEW MANAGEMENT/OWNERSHIP - 222 Haddon Avenue, Westmont, NJ



- ▶ Prestigious 3-story multi-tenant office building located on the corner of Haddon Avenue and Crystal Lake Avenue. Ample parking
- ▶ New ownership & management. Significant improvements recently completed including common restrooms, elevators, roof and parking lot
- ▶ Close proximity to Philadelphia, Route 38, 70 & 130 and 15 minutes from Philadelphia via The Ben Franklin Bridge. Less than one block from the Westmont PATCO station. Centrally located around award-winning restaurants as well as retail shopping on Haddon Avenue and Kings Highway

Space Available: 5,300 SF (1st Floor)

[FOR MORE INFORMATION CLICK HERE](#)

### SALE

#### 300 North Black Horse Pike, Williamstown, NJ



- ▶ Well-located multi-purpose commercial building situated on +/-1.30 Acres
- ▶ Fit-out as a school facility with large play area in rear of property
- ▶ Located on Black Horse Pike (Route 42) with great access and amenities nearby
- ▶ Building & monument signage available

Space Available: 5,500 SF

[FOR MORE INFORMATION CLICK HERE](#)

## Exclusive New Jersey Office Listings - July 2017

### LEASE

#### The Avery Shoppes, Route 130 & Pennypacker Drive, Willingboro, NJ



- ▶ New Retail development opportunity in Willingboro, NJ
- ▶ Building & Pylon signage available
- ▶ Adjacent to the Avery residential community
- ▶ Conveniently located at Route 130 & Pennypacker Drive
- ▶ Ideal for restaurants, retailers, daycare and office uses

Space Available: 2,542-23,658 SF

[FOR MORE INFORMATION CLICK HERE](#)

### LEASE

#### 135 South Broad Street, Woodbury, NJ



- ▶ Located in downtown Woodbury on South Broad Street (Route 45).
- ▶ Subject is surrounded by retail, banks, restaurants and professional offices.
- ▶ Close proximity to I-295.

Space Available: 600 SF- Office 5,000 SF Storage

[FOR MORE INFORMATION CLICK HERE](#)



## Exclusive New Jersey Retail Listings - July 2017

### SALE

#### DEVELOPMENT OPPORTUNITY - 4 Haddonfield Road, Cherry Hill, NJ 7730-7740 Maple Avenue, Pennsauken, NJ



- ▶ +/- 3.14 Acre site with 2 buildings (17,000 & 13,000 SF)
- ▶ Access/Entrances on Haddonfield Road & Maple Avenue
- ▶ Ideal redevelopment opportunity
- ▶ Public transportation available at the property and surrounding area
- ▶ Within 1/2 mile to Cherry Hill Mall

Space Available:  
17,000 SF (2 Story Building) - 4 Haddonfield Road  
13,000 SF (1 Story Building) - 7730-7740 Maple Ave

[FOR MORE INFORMATION CLICK HERE](#)

### LEASE

#### Barclay Farms Shopping Center, Cherry Hill, NJ



- ▶ Conveniently located on the well-traveled Route 70
- ▶ Close to Kings Highway, I-295 and the New Jersey Turnpike
- ▶ Current tenants include a wide range of national and locally owned retail, service, and food establishments, including Manhattan Bagel, The UPS Store, M&T Bank, The Cherry Grill, Asian Food Markets, and Jacobs Music Company
- ▶ This highly visible retail location also offers pad sites available fronting along Route 70
- ▶ Abundant parking, wide sidewalks, highly visible signage, and within close proximity to many high-traffic retailers
- ▶ The façade and lighting are scheduled to be updated in 2017

Space Available: Retail Space: 1,050 - SF Pad Sites Available-Call for Info

[FOR MORE INFORMATION CLICK HERE](#)

### LEASE

#### 1790 Route 70 East, Cherry Hill, NJ



- ▶ Small Office Suites for Lease on heavily traveled Route 70
- ▶ Built-out Professional Offices and affordable full service rental rate
- ▶ Easy Access to I-295 and the New Jersey Turnpike
- ▶ Free use of conference room
- ▶ Superior location with easy access to all of South Jersey

Space Available: 200 - 2,000 SF

[FOR MORE INFORMATION CLICK HERE](#)

## Exclusive New Jersey Retail Listings - July 2017

### LEASE

#### Crossroads Plaza, 843 Cooper Landing Road, Cherry Hill, NJ



- ▶ Available for immediate occupancy
- ▶ Pylon and above store signage available
- ▶ Abundant parking
- ▶ Neighborhood convenience center located at the key intersection of Route 38, Church Road & Cooper Landing Road
- ▶ Heavy traffic shopping center with a Wawa and Rite Aid at each end of the center
- ▶ Excellent visibility on Route 38 with pylon signage available
- ▶ Minutes away from Cherry Hill Mall and Moorestown Mall

Space Available: 1,120 - 10,000 SF

[FOR MORE INFORMATION CLICK HERE](#)

### LEASE

#### Pep Boys Plaza, 202 Route 130 N, Cinnaminson, NJ



- ▶ Located at a high traffic corner
- ▶ Store front and pylon signage available
- ▶ Join Subway, Pep Boys, Eastern Dental, Zio's Tuscan Grille and other retailers
- ▶ Available for immediate occupancy

Space Available: 2,400 SF & 7,130 SF

[FOR MORE INFORMATION CLICK HERE](#)

### LEASE

#### Circle Plaza Shopping Center, 6716 Black Horse Pike, Egg Harbor Township, NJ



- ▶ Anchored by TJ Maxx, Payless Shoe Source and Rent-A-Center
- ▶ Centrally located off Black Horse Pike and Washington Avenue - entrances on both roads
- ▶ Conveniently located off Exit 37 of Garden State Parkway
- ▶ 1,000,000 SF of retail space within 1.5 mile radius of property.
- ▶ Services Atlantic County's dense population
- ▶ Available for immediate occupancy

Space Available: 2,652 SF

[FOR MORE INFORMATION CLICK HERE](#)

## Exclusive New Jersey Retail Listings - July 2017

### SALE

**PRICE REDUCED! 454 Route 38, Maple Shade, NJ**



- ▶ Outstanding retail building for sale - Ideal for showroom and other retail uses
- ▶ Large, open spaced floor plan with high ceilings, easily customizable
- ▶ This uniquely designed building offers an extremely versatile opportunity for multiple retail possibilities. Property located directly on highly visible Route 38, situated in a rapidly redeveloping area between the Cherry Hill & Moorestown Malls
- ▶ Easy access to major thoroughfares including the NJ Turnpike, I-295, Route 73 and all area bridges to Pennsylvania

Space Available: 6,500 SF

[FOR MORE INFORMATION CLICK HERE](#)

### SALE/LEASE

**771 Route 70 West, Marlton, NJ**



- ▶ Ideal for Owner/Operator
- ▶ Retail Business & Premier Property for Sale or Lease
- ▶ Situated on +/-1.06 Acres
- ▶ 7-Eleven & Valero Gas Station - Located at signalized intersection of Route 70 & Cropwell Road

Space Available:  
3,000 SF Store 8 Gas Pump & Full Canopy work area +/-1.06 Acres

[FOR MORE INFORMATION CLICK HERE](#)

### LEASE

**Roberts Mills Plaza, 3701 Church Road, Mount Laurel, NJ**



- ▶ Located at signalized intersection on Church Road
- ▶ Minutes from Routes 73, 38 and I-295 - Public transportation on site
- ▶ Surrounded by large apartment communities and homes - Traffic count exceeding 20,000 VPD
- ▶ Ideal location for restaurant, florist, wireless store, martial arts, tanning salon, yoga, ice cream parlor or medical/professional offices

Space Available: 775 SF (Retail) SF 824 & 1,580 SF (Office Space)

[FOR MORE INFORMATION CLICK HERE](#)



## Exclusive New Jersey Retail Listings - July 2017

### SALE

#### Berlin Cross Keys Road Block 101 Lot 7, Sicklerville, NJ



- ▶ Zoned Commercial
- ▶ Highly visible Pad sites available for sale - Located on Berlin Cross Keys Road in Sicklerville in a prime retail and commercial development area
- ▶ Within close proximity to Kennedy & Virtua hospitals
- ▶ Located within a high income residential area and surrounded by medical/professional offices
- ▶ Convenient access to Atlantic City Expressway, I-295 and Black Horse Pike

Space Available: Lot 3.07 Pad Site - 1.84 Acres

[FOR MORE INFORMATION CLICK HERE](#)

### LEASE

#### END-CAP STORE - The Crossings at Twin Oaks, 649-675 Cross Keys Road, Sicklerville, NJ



- ▶ Highly visible retail center located at signalized intersection
- ▶ End-Cap store for lease
- ▶ Located within a high income residential area and surrounded by medical/professional offices
- ▶ Anchor tenants include Rite Aid and Roger Wilco
- ▶ Within close proximity to Kennedy & Virtua hospitals - Located at the Corner of Cross Keys Rd and Johnson Rd in Gloucester Township at a signalized intersection
- ▶ Immediate access to The Black Horse Pike and The Atlantic City Expressway

Space Available: +/- 4,770 SF

[FOR MORE INFORMATION CLICK HERE](#)

### LEASE

#### ONLY ONE STORE REMAINING - Fries Mill Shopping Center, 245 Fries Mill Road, Turnersville, NJ



- ▶ Highly visible retail center located at signalized intersection with +/- 80 Parking Spaces
- ▶ 1,593-2,059 SF contiguous space
- ▶ Within close proximity to Kennedy & Virtua hospitals and located within a high income residential area and surrounded by medical/professional offices

Space Available: +/- 2,059 SF

[FOR MORE INFORMATION CLICK HERE](#)

## Exclusive New Jersey Retail Listings - July 2017

### LEASE

#### 1100 White Horse Road, Voorhees, NJ



- ▶ Recently renovated exterior façade
- ▶ Located within close proximity to the Voorhees Corporate Center
- ▶ Ideal for medical, retail or professional office use
- ▶ Property sits along White Horse Road within immediate access to Haddonfield Berlin Road (561)
- ▶ Location is surrounded by some of the region's most prestigious retail, health care providers and corporate office users
- ▶ Building and pylon signage available
- ▶ Well maintained and landscaped property
- ▶ Conveniently located within close proximity to I-295, Route 70 and the NJ Turnpike
- ▶ Abundant Parking

Space Available: 1,960 SF

[FOR MORE INFORMATION CLICK HERE](#)

### LEASE

#### Echo Shopping Center, 200-300 White Horse Road, Voorhees, NJ



- ▶ Attractive Lease Terms
- ▶ Excellent access, visibility & tenant signage
- ▶ High Density residential area with excellent demographics
- ▶ Professional and medical offices and facilities nearby
- ▶ Excellent tenant mix and within close proximity to Route 70, 73 and I-295

Space Available: 1,404 SF, 2,181 SF, 2,800 SF, 1,505 SF

[FOR MORE INFORMATION CLICK HERE](#)

### LEASE

#### 219 South Burnt Mill Road, Voorhees, NJ



- ▶ Location is surrounded by some of the region's most prestigious health care providers and corporate office users
- ▶ Excellent access, visibility & tenant signage
- ▶ Well maintained and landscaped property
- ▶ Within close proximity to many retail stores, restaurants and health care practices
- ▶ Attractive Lease Terms
- ▶ High Density residential area with excellent demographics
- ▶ Convenient access to Route 70, I-295, New Jersey Turnpike and the Atlantic City Expressway
- ▶ Abundant Parking

Space Available: 15,070 SF

[FOR MORE INFORMATION CLICK HERE](#)

## Exclusive New Jersey Retail Listings - July 2017

### LEASE

#### The Avery Shoppes, Route 130 & Pennypacker Drive, Willingboro, NJ



- ▶ New Retail development opportunity in Willingboro, NJ
- ▶ Building & Pylon signage available
- ▶ Adjacent to the Avery residential community and Conveniently located at Route 130 & Pennypacker Drive. Ideal for restaurants, retailers, daycare and office uses

Space Available: 2,542-23,658 SF

[FOR MORE INFORMATION CLICK HERE](#)



## Exclusive New Jersey Industrial/Flex Listings - July 2017

### LEASE

#### 460 Veterans Drive, Burlington, NJ



- ▶ Office/Flex space for lease in a well-located business park
- ▶ Zoned for light industrial, R&D and office uses
- ▶ Rooftop Solar System provides for reduced electricity costs
- ▶ Tailgate loading docks
- ▶ Immediate access to Burlington-Bristol Bridge and within close proximity to Routes 130, I-295 and NJ Turnpike
- ▶ Abundant Parking Ratio
- ▶ Locally owned & managed

Space Available: 17,238 SF (Divisible)

[FOR MORE INFORMATION CLICK HERE](#)

### LEASE

#### Millside Business Park, 1835 Underwood Boulevard, Delran, NJ 08075



- ▶ Located in The Millside Business Park
- ▶ Available space with numerous private offices, bullpen area, training/conference rooms, kitchenette, and loading dock area
- ▶ Electricity/Power - Heavy - 1000-1000a/120-460v
- ▶ The park is zoned for office, light industrial, and warehouse use
- ▶ Positioned at Chester Avenue and Route 130 in Delran Township
- ▶ The park is in the heart of Burlington County's Route 130 commercial corridor
- ▶ Minutes from the Betsy Ross and Tacony-Palmyra bridges providing convenient access to Philadelphia
- ▶ NJ Transit bus line stop is located nearby on Chester Ave. and the Park is in close proximity to NJ Transit's RiverLine commuter rail station in Riverside

Space Available: 16,000 SF

[FOR MORE INFORMATION CLICK HERE](#)

### SALE/LEASE

#### UNDER AGREEMENT - 3477 Haddonfield Road, Pennsauken, NJ



- ▶ Situated on +/-1.3 Acres
- ▶ 2 Buildings: 3477 Haddonfield Road & 3450 Saint Martin
- ▶ Two commercial buildings totaling 6,600 SF- PRICED TO SELL
- ▶ Available with a 30 days notice
- ▶ Monument/Pylon signage along Haddonfield Road
- ▶ Minutes from Routes 38, 70, 73, I-295 and within minutes of the Betsy Ross and Tacony Palmyra Bridges.
- ▶ Great for a variety of uses and property offers outdoor fenced and gated secure storage

Space Available: 6,600 SF

[FOR MORE INFORMATION CLICK HERE](#)

## Exclusive New Jersey Industrial/Flex Listings - July 2017

### SALE/LEASE

**UNDER AGREEMENT - 801 East Clements Bridge Road, Runnemede, NJ**



- ▶ 15 Foot Ceiling Height
- ▶ 22,160 SF of Industrial and 1,840 SF of Office Space
- ▶ 2 Loading Docks, 1 Drive-In, Fenced Lot
- ▶ Directly across from NJ Transit bus stop and located near I-295 and NJ Turnpike

Space Available: +/-25,000 SF

[FOR MORE INFORMATION CLICK HERE](#)

### LEASE

**11 Enterprise Court, Sewell, NJ**



- ▶ Warehouse/Flex building opportunity
- ▶ Located within close proximity to Routes 47, 55, AC Expressway & I-295
- ▶ Available for immediate occupancy
- ▶ Warehouse space also available with 2 drive-in doors and loading dock

Space Available: +/-1,380-9,330 SF-Warehouse/Flex

[FOR MORE INFORMATION CLICK HERE](#)

### LEASE

**110 American Boulevard, Turnersville, NJ**



- ▶ Located 1 1/2 miles from an AC Expressway interchange and is in close proximity to Route 42 and Route 55
- ▶ The property is in an established retail/flex/office location
- ▶ Major retailers and amenities are within the immediate area
- ▶ 20 Ceiling Heights
- ▶ 6/1000 parking ratio

Space Available: 2,700-9,000 SF Office/Flex (Divisible)

[FOR MORE INFORMATION CLICK HERE](#)

## Exclusive New Jersey Industrial/Flex Listings - July 2017

### LEASE

**PRICE REDUCED** 110 Cushman Avenue, West Berlin, NJ



- ▶ Industrial/Flex building with well-lit high end showroom area
- ▶ Located in the heart of Berlin's Industrial District off highly traveled Route 73
- ▶ Within minutes to AC Expressway, I-295 & NJ Turnpike
- ▶ Property sits on +/- 8 Acres. Ideal for future expansion
- ▶ Recently renovated facade

Space Available: 35,500 SF

[FOR MORE INFORMATION CLICK HERE](#)



## Exclusive New Jersey Land Listings - July 2017

### SALE

**4 Haddonfield Road, Cherry Hill, NJ - 7730-7740 Maple Avenue, Pennsauken, NJ**



- ▶ +/- 3.14 Acre site with 2 buildings
- ▶ (17,000 & 13,000 SF)
- ▶ Access/Entrances on Haddonfield Road & Maple Ave
- ▶ Ideal redevelopment opportunity
- ▶ Public transportation available at the property and surrounding area. Within 1/2 mile to Cherry Hill Mall

Space Available: 17,000 SF (2 Story Building)  
13,000 SF (1 Story Building)

[FOR MORE INFORMATION CLICK HERE](#)

### SALE

**UNDER AGREEMENT 7023 Route 130 South, Delran, NJ**



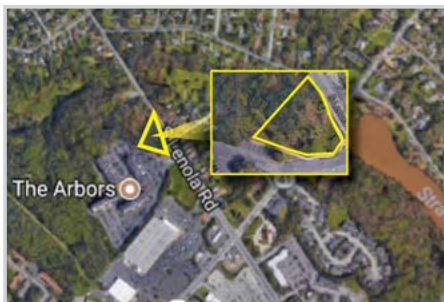
- ▶ Prime development site on Route 130 in Delran.
- ▶ Within close proximity to Philadelphia providing easy access to I-295, NJ Turnpike and Route 73.

Space Available: +/- 8.41 Acres

[FOR MORE INFORMATION CLICK HERE](#)

### SALE

**220 South Lenola Road (\*\*Closest legal address\*\*) Block 172 - Lot 4.07, Maple Shade, NJ**



- ▶ Prime development opportunity
- ▶ Ideal for Medical, Professional and Retail development
- ▶ Located adjacent to S. Lenola Road & East Kings Highway Intersection and within immediate proximity to numerous retail amenities
- ▶ Triangle shaped +/-1.33 Acre parcel sits on heavily trafficked S. Lenola Road
- ▶ Located within a high income residential area and surrounded by medical/professional offices
- ▶ This site benefits from superior demographics, prominent visibility, and ease of access to I-295, Route 73, Route 38 & NJ Turnpike
- ▶ Close proximity to East Gate Square and Moorestown Mall

Space Available: +/- 1.33 Acres

[FOR MORE INFORMATION CLICK HERE](#)

## Exclusive New Jersey Land Listings - July 2017

### SALE

#### 16 Stow Road, Marlton, NJ



- ▶ +/- 2.318 Acre Development Opportunity - Approved for 12,376 SF Two-Story Office Building
- ▶ Direct access to Route 73 and within close proximity to I-295 & NJ Turnpike
- ▶ Many amenities nearby including, hotels, banks, restaurants and retailers
- ▶ Owner will also Build to Suit
- ▶ Block 2.06, Lot 2
- ▶ 69 Parking spaces

Space Available: +/- 2.318 Acre Development Opportunity

[FOR MORE INFORMATION CLICK HERE](#)

### SALE

#### UNDER AGREEMENT - 3477 Haddonfield Road, Pennsauken, NJ



- ▶ Situated on +/-1.3 Acres
- ▶ 2 Buildings: 3477 Haddonfield Road & 3450 Saint Martin
- ▶ Two commercial buildings totaling 6,600 SF- PRICED TO SELL - Available with a 30 days notice
- ▶ Monument/Pylon signage along Haddonfield Road
- ▶ Minutes from Routes 38, 70, 73, I-295 and within minutes of the Betsy Ross and Tacony Palmyra Bridges.
- ▶ Great for a variety of uses and property offers outdoor fenced and gated secure storage

Space Available: 3477 Haddonfield Road: 4,200 SF  
3450 St. Martin: 2,840 SF

[FOR MORE INFORMATION CLICK HERE](#)

### SALE

#### Berlin Cross Keys Road Block 101 Lots 7, Sicklerville, NJ



- ▶ Zoned Commercial - Highly visible Pad sites available for sale
- ▶ Located on Berlin Cross Keys Road in Sicklerville in a prime retail and commercial development area
- ▶ Within close proximity to Kennedy & Virtua hospitals
- ▶ Located within a high income residential area and surrounded by medical/professional offices
- ▶ Convenient access to Atlantic City Expressway, I-295 and Black Horse Pike

Space Available: Lot 3.07 Pad Site - 1.84 Acres

[FOR MORE INFORMATION CLICK HERE](#)

## Exclusive New Jersey Land Listings - July 2017

### SALE

#### UNDER AGREEMENT - 710 Laurel Road, Stratford, NJ



- ▶ Well-located +/-20.5 Acre Campus for Sale w/25,200 SF Office/School building
- ▶ Located within close proximity to Rowan University School of Osteopathic Medicine &
- ▶ Kennedy Health Hospital University
- ▶ Easy access to Route 30 (White Horse Pike) and Lindenwald PATCO station
- ▶ Available for immediate possession

Space Available: 25,200 SF (Office/School) +/- 10 Acre Site

[FOR MORE INFORMATION CLICK HERE](#)

### SALE

#### 1223 Haddonfield Berlin Road, Voorhees, NJ



- ▶ Zoned B-Business
- ▶ Prime development site consisting of +/-8.12 Acres located on Route 561
- ▶ Ideal for medical/professional office development
- ▶ Close proximity to Virtua Health System & Voorhees Towne Center

Space Available: +/-8.12 Acres

[FOR MORE INFORMATION CLICK HERE](#)

### SALE

#### 326 Route 73, Voorhees, NJ



- ▶ Recently renovated 6,862 square foot medical/office building
- ▶ Situated on +/-2.56 acres with 10,000sf approved pad site for future development
- ▶ Ideal for a variety of medical and professional office uses
- ▶ Monument signage fronting on the heavily traveled route 73
- ▶ Immediate access to Virtua Hospital Voorhees Campus
- ▶ Surrounded by healthcare & professional users
- ▶ Within close proximity to many retail stores, restaurants and health care practices
- ▶ Convenient access to Route 70, I-295, New Jersey Turnpike and the Atlantic City Expressway

Space Available: 6,862 SF Approved 10,000 SF pad site

[FOR MORE INFORMATION CLICK HERE](#)



## Exclusive New Jersey Land Listings - July 2017

### LEASE

#### 801 Haddonfield Berlin Road , Voorhees, NJ



- ▶ Prime JV Development and/or Ground Lease Opportunity
- ▶ Lot 35, Block 199.06 (Part Of 1000 Laurel Oak Road)
- ▶ Zoned SH-Senior Housing
- ▶ Ideal for for Senior Living, Medical, Professional and Retail development
- ▶ Positioned directly next to Lions Gate Continuing Care Retirement Community and within immediate proximity to the newly constructed Patient First Urgent Care
- ▶ Located directly across from Eagle Plaza and The Ritz Retail Shopping Centers
- ▶ Traffic light and turning lane access from either direction
- ▶ Triangle shaped +/-12.348 Acre parcel sits on heavily trafficked Haddonfield-Berlin Road
- ▶ Includes over 1000 feet of frontage
- ▶ This site benefits from superior demographics, prominent visibility, and ease of access to I-295, Route 70 and Route 73
- ▶ Close proximity to Virtua Health System & Voorhees Towne Center

Space Available: +/-12.348 Acres

[FOR MORE INFORMATION CLICK HERE](#)

### SALE

#### **SOLD** 315 Bridge Street, Westampton, NJ



- ▶ Property consists of 4 Buildings formerly used for a School Campus-like atmosphere
- ▶ Situated on +/- 11.08 acres allowing for expansion opportunities
- ▶ Full Size Basketball courts with Boys and Girls restrooms adjacent to a on-site Café
- ▶ Main Building has six (6) classrooms, two (2) Teacher offices, one (1) conference room, break room, Library and open workshop area.
- ▶ Two side buildings consist of 3 to 4 large classrooms, restrooms and break rooms
- ▶ Conveniently located within 1 mile of I-295 (exit 45A)
- ▶ Adjacent to Westampton Sports Complex
- ▶ Easy access to NJ Turnpike (Exit 5)
- ▶ Neighboring to many residential communities
- ▶ Within 1 mile to Westampton Municipal Building

Space Available: School Building 1 - 3,750 SF  
 School Building 2 - 4,581 SF  
 School Building 3 - 8,640 SF ( Gymnasium)  
 School Building 4 - 11,219 SF

[FOR MORE INFORMATION CLICK HERE](#)

## Exclusive Pennsylvania Listings - July 2017

### LEASE

#### 930 Harvest Point, 930 Harvest Drive, Blue Bell, PA



- ▶ Four-Story Class A office building totaling 118,004 SF
- ▶ Newly renovated restrooms, common areas, and lobby directory
- ▶ Vending area available 24/7
- ▶ Tenant only conference center
- ▶ Fully time on-site day porter, building engineer and on-site management & ownership
- ▶ Backup generator
- ▶ Plug and play suites available - seamless no hassle tenant build-out process
- ▶ Parking ratio of 4/1000 sf with additional parking available on the adjacent lot
- ▶ Easy access from major highways I-476, PA Turnpike and Plymouth Meeting Interchange

Space Available: 2,000 - 13,783 SF (Divisible)

[FOR MORE INFORMATION CLICK HERE](#)

### SALE

#### 32 Industrial Road, Frackville, PA



- ▶ Situated on +/- 36 Acres
- ▶ Building signage available
- ▶ Approximately 18' clear height
- ▶ Column Spacing Varies
- ▶ 100% Wet Sprinkler System
- ▶ Mostly gas fired ceiling hung hot air heat units with some gas fired radiant units
- ▶ 12 tailgate loading doors, most with pit levelers
- ▶ (1) 10' x 14' drive-in loading door
- ▶ Metal Halide lighting
- ▶ Public water, sewer and natural gas utilities

Space Available: +/- 137,500 sf (Includes office area +/- 12,500 sf)

[FOR MORE INFORMATION CLICK HERE](#)

## Exclusive Pennsylvania Listings - July 2017

### SALE

#### 14 City Shirt Road, Frackville, PA



- ▶ Situated on +/- 5.2 Acres
- ▶ Built in 1980 (approximate)
- ▶ Building signage available
- ▶ 12' to 16' and 14' to 18' clear Height
- ▶ Mostly 25' x 40" Column Spacing
- ▶ 100% Wet Sprinkler System
- ▶ Cambridge gas fired heat units
- ▶ 8 tailgate loading doors some with pit levellers
- ▶ (1) 12'x 16" drive in loading door
- ▶ Metal Halide and fluorescent lighting
- ▶ Public water, sewer and natural gas utilities
- ▶ Easy access to the I81 corridor

Space Available: +/- 80,000 sf ( Office +/- 5,000 sf )

[FOR MORE INFORMATION CLICK HERE](#)

### SALE

#### FULLY LEASED BB&T INVESTMENT OPPORTUNITY!! 3679 Main Street, Morgantown, PA



- ▶ Freestanding Absolute Triple Net Ground Lease to BB&T (NYSE:BBT)
- ▶ Lease Expires 3/31/2027
- ▶ Situated on +/- 3.35 Acres
- ▶ 2,930 SF Building
- ▶ Current Rent: \$159,300
- ▶ Future Rent Increases 4/1/2017, 4/1/2022
- ▶ Immediate access to I-176 providing a link between Morgantown and PA 23 and Reading and US 422

Space Available: +/-3.35 Acres 2,930 SF

[FOR MORE INFORMATION CLICK HERE](#)

### LEASE

#### 1004-1026 Spring Garden Street, Philadelphia, PA



- ▶ Well-maintained retail landmark building
- ▶ Easily accessible location in Center City Philadelphia
- ▶ Close proximity to I-676 (the Vine Street Expressway), the limited access highway that links I-76 (the Schuylkill Expressway) and I-95, and 4 blocks east of Broad Street, Philadelphia's main north-south thoroughfare, Broad Street subway, regional rail service, near several hotels and restaurants, within walking distance of Benjamin Franklin Parkway and Philadelphia Museum of Art

Space Available: 2,200-9,020 SF

[FOR MORE INFORMATION CLICK HERE](#)



## Exclusive Pennsylvania Listings - July 2017

### LEASE

#### 649 West Germantown Pike, Plymouth Meeting, PA



- ▶ Medical office space
- ▶ Elevator Served 2nd Floor Space
- ▶ Equipped and set up with cabinetry, computer wiring, conference room, lockers, staff room and 6 exam rooms & nurses station.
- ▶ Ideal for any health care professional, also has oxygen and medical gases as well as suction.
- ▶ Ideal for Dermatology, plastic surgery, podiatry, cosmetic doctors, hair restoration, etc.
- ▶ Additional equipment like esthetic lasers can be made available for an additional cost.
- ▶ Located across from Plymouth Meeting Mall and providing immediate access to I-476 & PA Turnpike
- ▶ Local amenities including 3 hotels, numerous restaurants, food court, and the SEPTA mini hub

Space Available: +/-2,450 SF - 2nd Floor

[FOR MORE INFORMATION CLICK HERE](#)

### SALE

#### Valmont Industrial Park, 150 Jaycee Drive, West Hazelton, PA



- ▶ 90,000 SF Income Producing Warehouse Building for Lease/Sale
- ▶ 20 Clear ceiling heights
- ▶ 40'x55 Column spacing
- ▶ Two (2) tailgate & One (1) drive-in loading door
- ▶ Located 1.5 miles from Route I-81 & 10 miles from Route I-80

Space Available: 27,700 SF

[FOR MORE INFORMATION CLICK HERE](#)

### SALE

#### LOTS 326, 334 & 400 Wyomissing Boulevard, Wyomissing, PA



- ▶ Fully improved development opportunity
- ▶ Two parcels comprising of +/- .69 Acres
- ▶ Property is two tenths of a mile from PA Route 422 ramp
- ▶ Zoned C-1 Neighborhood Commercial District

Space Available: Two parcels comprising of +/- .69 Acres

[FOR MORE INFORMATION CLICK HERE](#)

## Exclusive Pennsylvania Listings - July 2017

### SALE

1047 North Park Road, Wyomissing, PA



- ▶ +/- 43,000 SF building situated on +/-5.49 acres
- ▶ Frontage on both the Warren Street & West Shore By-Pass
- ▶ Great highway exposure and easy access to site from all highways
- ▶ Zoning - C-2 Retail Commercial District

Space Available: 43,000 SF Building    Situated on +/-5.49 Acres

[FOR MORE INFORMATION CLICK HERE](#)

## CONTACT US

Jason M. Wolf  
Managing Principal  
856 857 6301  
[jason.wolf@wolfcre.com](mailto:jason.wolf@wolfcre.com)

Tony Banks  
Vice President  
215 544 6040  
[tony.banks@wolfcre.com](mailto:tony.banks@wolfcre.com)

Anthony V. Mannino, Esq.  
Vice President, Corporate Strategies  
215 799 6140  
[anthony.mannino@wolfcre.com](mailto:anthony.mannino@wolfcre.com)

Scott Seligman  
Director Business Development  
856 857 6305  
[scott.seligman@wolfcre.com](mailto:scott.seligman@wolfcre.com)

Lee E. Fein  
Senior Vice President  
215 799 6900  
[lee.fein@wolfcre.com](mailto:lee.fein@wolfcre.com)

John T. Mozzillo  
Senior Associate &  
Director of Investment Sales  
856 857 6304  
[john.mozzillo@wolfcre.com](mailto:john.mozzillo@wolfcre.com)

Andrew Maristch III  
Vice President Corporate Services  
& Portfolios  
215 799 6140  
[anthony.mannino@wolfcre.com](mailto:anthony.mannino@wolfcre.com)

Christopher R. Henderson  
Vice President  
856 857 6337  
[chris.henderson@wolfcre.com](mailto:chris.henderson@wolfcre.com)

Ryan J. Barikian  
Senior Associate  
856 857 6307  
[ryan.barikian@wolfcre.com](mailto:ryan.barikian@wolfcre.com)

Brian P. Propp  
Director Strategic Relationships  
856 857 6338  
[brian.propp@wolfcre.com](mailto:brian.propp@wolfcre.com)

**“Building Successful Relationships” is our Mission.**

The foregoing information was furnished to us by sources which we deem to be reliable, but no warranty or representation is made as to the accuracy thereof. Subject to correction of errors, omissions, change of price, prior sale or withdrawal from market without notice.

follow us:    



# SOME PLAY BY THE BOOK. WE'RE REWRITING IT.



Putting our experience to work for you. In a whole new way.

- Landlord Representation
- Tenant Representation
- Research & Marketing Information
- Corporate Real Estate Representation
- Investments
- Property Management
- Appraisal & Advisory Services
- Construction Services

For more information, visit [WolfCRE.com](http://WolfCRE.com) or call 856-857-6300.



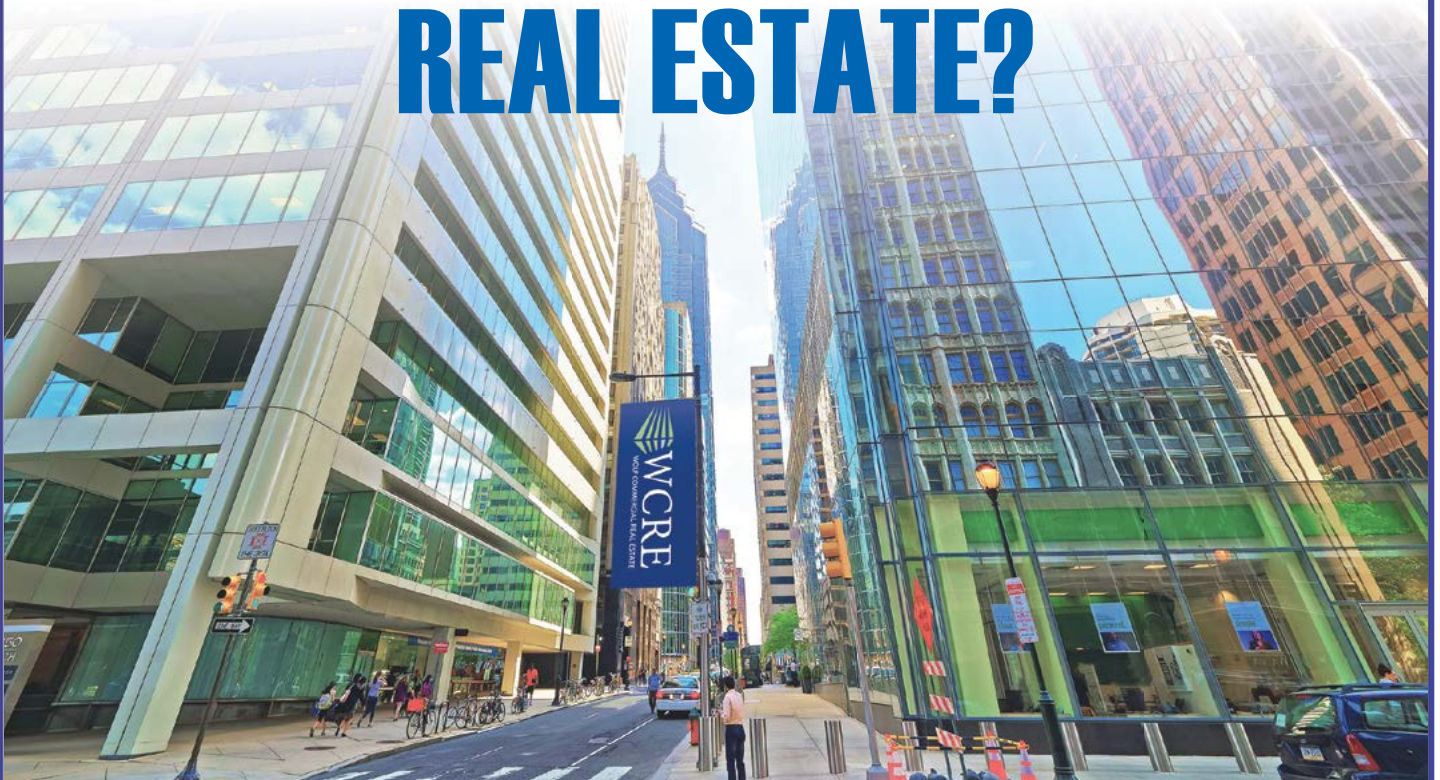
*Building Successful Relationships™*



Marlton, NJ | King of Prussia, PA

**CORFAC**  
International

# WHAT BETTER PLACE TO REVOLUTIONIZE COMMERCIAL REAL ESTATE?



The Philadelphia market will never be the same.  
WCRE is in town.

- Landlord Representation
- Tenant Representation
- Research & Marketing Information
- Corporate Real Estate Representation
- Investments
- Property Management
- Appraisal & Advisory Services
- Construction Services

For more information, visit [WolfCRE.com](http://WolfCRE.com) or call **215-799-6900**.



*Building Successful Relationships™*





# THERE'S A NEW KIND OF INDEPENDENCE IN TOWN.



**WCRE has arrived.**

**And the Philadelphia market will never be the same.**

- Landlord Representation
- Tenant Representation
- Research & Marketing Information
- Corporate Real Estate Representation
- Investments
- Property Management
- Appraisal & Advisory Services
- Construction Services

For more information, visit [WolfCRE.com](http://WolfCRE.com) or call **215-799-6900**.



*Building Successful Relationships™*











# WolfCRE.com



**NJ OFFICE**  
951 Route 73 North | Suite D  
Marlton, NJ 08053  
P 856 857-6300 | F 856 283-3950  
[info@wolfcre.com](mailto:info@wolfcre.com)

**PA OFFICE**  
630 Freedom Business Center | 3rd Floor  
King of Prussia, PA 19406  
P 215 799 6900 | F 610 768 7701  
[info@wolfcre.com](mailto:info@wolfcre.com)