



951 Route 73 North | Suite D | Marlton, NJ 08053
P 856 857 6300 | F 856 283 3950
www.wolfcre.com

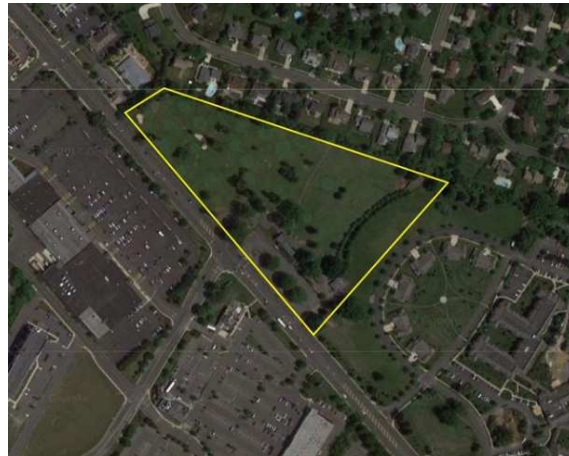
630 Freedom Business Center Drive | 3rd Floor | King of Prussia, PA 19406
P 215 799 6900 | F 610 768 7701
www.wolfcre.com

News Release

FOR IMMEDIATE RELEASE

Contact: Andrew Becker
Phone: 856.449.5220
Email: andrew.becker@wolfcre.com

WCRE APPOINTED EXCLUSIVE AGENT TO MARKET PREMIER VOORHEES, NEW JERSEY LAND SITE



May 10, 2017 – Marlton, NJ – Wolf Commercial Real Estate (WCRE) is pleased to announce that it has been retained by SJF CCRC, Inc., trading as Lions Gate, an affiliate of Jewish Federation of Southern New Jersey, as exclusive agent for the future development of 801 Haddonfield-Berlin Road, Voorhees, NJ. The assignment includes exclusive listing and advisory duties for the site, which is adjacent to the Lions Gate Continuing Care Retirement Community, and is currently home to Golf Land.

The development parcel is located directly across from both Eagle Plaza and The Ritz retail centers and within walking distance of the newly constructed Patient First Urgent Care. The triangle shaped +/-12.348 Acre parcel sits on heavily trafficked Haddonfield-Berlin Road and includes more than 1,000 feet of frontage. This site benefits from superior demographics, prominent visibility, and ease of access via a traffic light and turning lanes from either direction.

Lions Gate is considering all options, including a ground lease or a joint venture with a developer. “For us, this is about community. We will work to ensure that the entity that lands on this site will be a great addition to the neighborhood and a partner to Lions Gate,” said Jason Wolf, founding principal of WCRE.

This assignment adds to WCRE’s growing number of partnerships with institutional and healthcare clients in Philadelphia and Southern New Jersey. It is the firm’s second engagement with the Jewish Federation,





951 Route 73 North | Suite D | Marlton, NJ 08053
P 856 857 6300 | F 856 283 3950
www.wolfcre.com

630 Freedom Business Center Drive | 3rd Floor | King of Prussia, PA 19406
P 215 799 6900 | F 610 768 7701
www.wolfcre.com

having facilitated its 2014 purchase of the building now known as the Annex, a 21,325 square-foot school building situated on 18+/- acres on Springdale Road in Cherry Hill.

“We look forward to working with an organization whose values align so closely with ours,” said Susan Love, CEO of Lions Gate.

WCRE’s Anthony Mannino, Esq., Vice President of Corporate Strategies said, “WCRE is proud to partner with Lions Gate as our latest institutional relationship in Southern New Jersey. We look forward to applying our WCRE 360 marketing approach to find the right user for this highly-desirable property.”

WCRE’s institutional specialist team of Chris Henderson, Anthony Mannino, John Mozzillo and Jason Wolf will be working closely together with Lions Gate on this property initiative.

A marketing brochure is available upon request.

Learn more about Wolf Commercial Real Estate at www.wolfcre.com and Lions Gate at www.lionsgateccrc.org.

About WCRE

WCRE is a full-service commercial real estate brokerage and advisory firm specializing in office, retail, medical, industrial and investment properties in Southern New Jersey and the Philadelphia region. We provide a complete range of real estate services to commercial property owners, companies, banks, commercial loan servicers, and investors seeking the highest quality of service, proven expertise, and a total commitment to client-focused relationships. Through our intensive focus on our clients’ business goals, our commitment to the community, and our highly personal approach to client service, WCRE is creating a new culture and a higher standard. We go well beyond helping with property transactions and serve as a strategic partner invested in your long term growth and success.

Learn more about WCRE at www.wolfcre.com, on Twitter & Instagram @WCRE1, and on Facebook at [Wolf Commercial Real Estate, LLC](https://www.facebook.com/Wolf-Commercial-Real-Estate-LLC). Visit our blog pages at www.southjerseyofficespace.com, www.southjerseyindustrialspace.com, www.southjerseymedicalspace.com, www.southjerseyretailspace.com, www.phillyofficespace.com, www.phillyindustrialspace.com, www.phillymedicalspace.com and www.phillyretailspace.com.

###

